



# MURATORI

**TIPO-TYPE-TYP  
MTL 5**

**CATALOGO RICAMBI**  
**Catalogue Pièces Detachées**  
**Ersatzteilkatalog**  
**Spare Parts Catalogue**  
**Catálogo Recambios**

**EDIZIONE 01/2020**



Per ordinare parti di ricambio specificare:

- tipo e matricola della macchina (apposti sulla macchina o sui documenti di acquisto);
- numero del riferimento del pezzo nel disegno (Pos.), numero della tavola (Tav.) e numero di codice

**N.B.:** le indicazioni destro o sinistro vengono date guardando la macchina da dietro.

*Pour les commandes de pièces de rechange veuillez spécifier:*

- *type et numéro de série de la machine (indiqués sur la machine et sur le bon d'achat);*
- *numéro de référence du pièce sur le plan (Pos.), numéro du plan (Tav.) et numéro de code (codice)*

**N.B.:** *les indications droite ou gauche sont données en regardant la machine par derrière.*

*Zum Bestellen von Ersatzteilen folgendes angeben:*

- *Typ und Serien-Nr. der Maschine (zu finden auf der Maschine oder der Einkaufspapieren);*
- *Bezug-Nr. des Ersatzteils auf der Zeichnung (Pos.), Zeichnungsnummer (Tav.) und Kodenummer (codice)*

**N.B.:** *Die Angaben rechts und links verstehen sich so, dass man hinter der Maschine steht.*

When ordering spare parts specify:

- machine type and serial number (found on the machine or on the purchasing documents);
- reference number of the part on the relative drawing (Pos.) number of the drawing (Tav.) and part number (codice)

**N.B.:** right-hand or left-hand indications are made by viewing the machine from the rear.

**TAV. 1.0**

GRUPPO TELAIO  
 ENSEMBLE CHASSIS  
 SATZ FÜR RAHMEN  
 KIT FOR FRAME

**TAV. 2.0**

GRUPPO TRASMISSIONE ROTORE  
 ENSEMBLE TRANSMISSION ROTORS  
 SATZ FÜR DEN ROTARONTRIEB  
 KIT FOR THE ROTOR TRANSMISSION

**TAV. 3.0**

GRUPPO RULLO POSTERIORE  
 ENSEMBLE ROULEAU ARRIERE  
 SATZ HINTERE WALZE  
 KIT REAR ROLLER

**TAV. 4.0**

GRUPPO MOLTIPLICATORE  
 ENSEMBLE MULTIPLICATEUR  
 SATZ FÜR GETRIEBE  
 KIT FOR GEAR BOX

**TAV. 5.0**

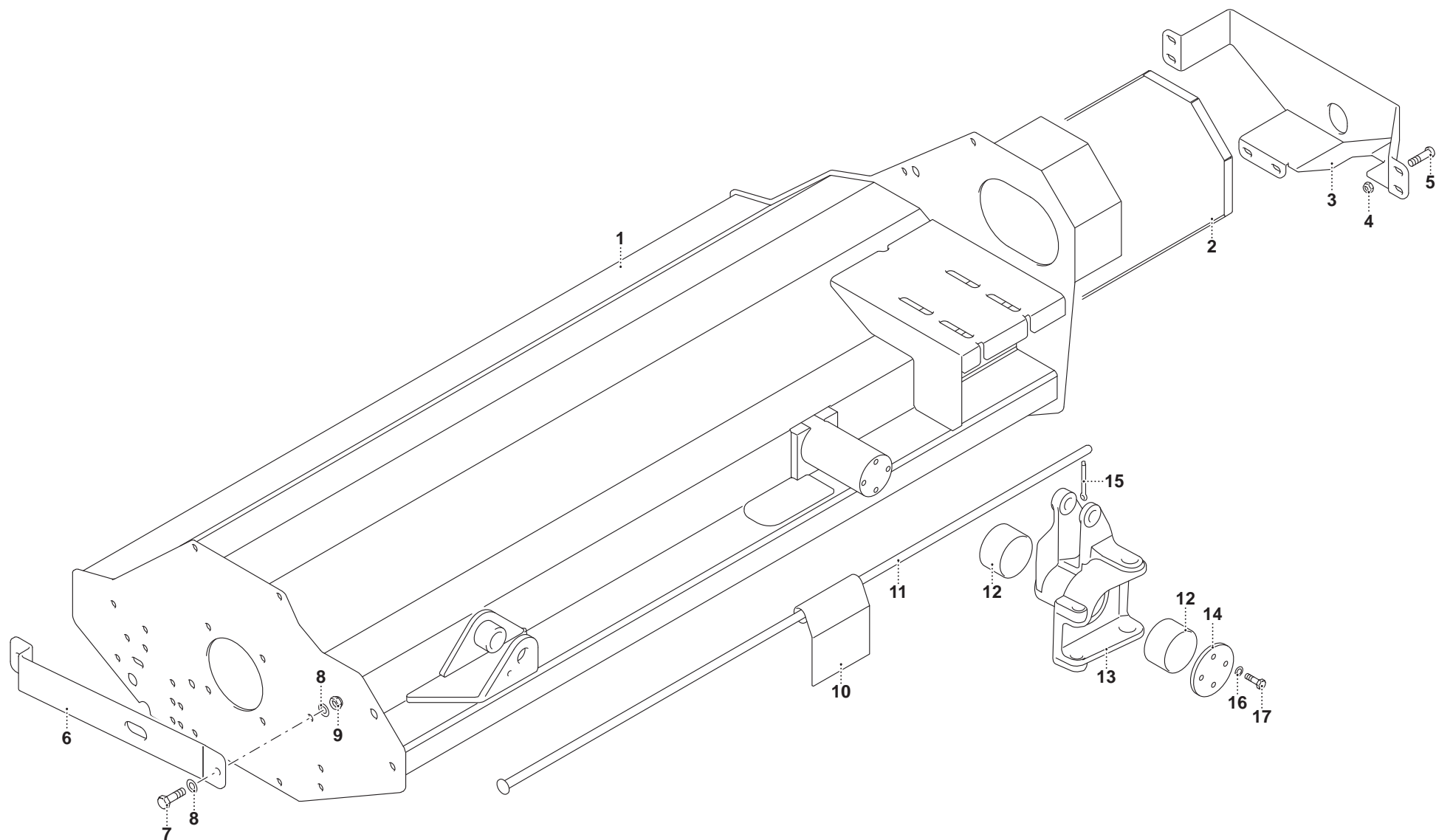
ATTACCO 3-PUNTI E SPOSTAMENTO  
 ATTELAGE 3-POINTS ET DEPLACEMENT  
 3-PUNKT-ANSCHLUSS UND VERSCHIEBUNG  
 3-POINT-HITCH AND OFFSET SYSTEM

**TAV. 6.0**

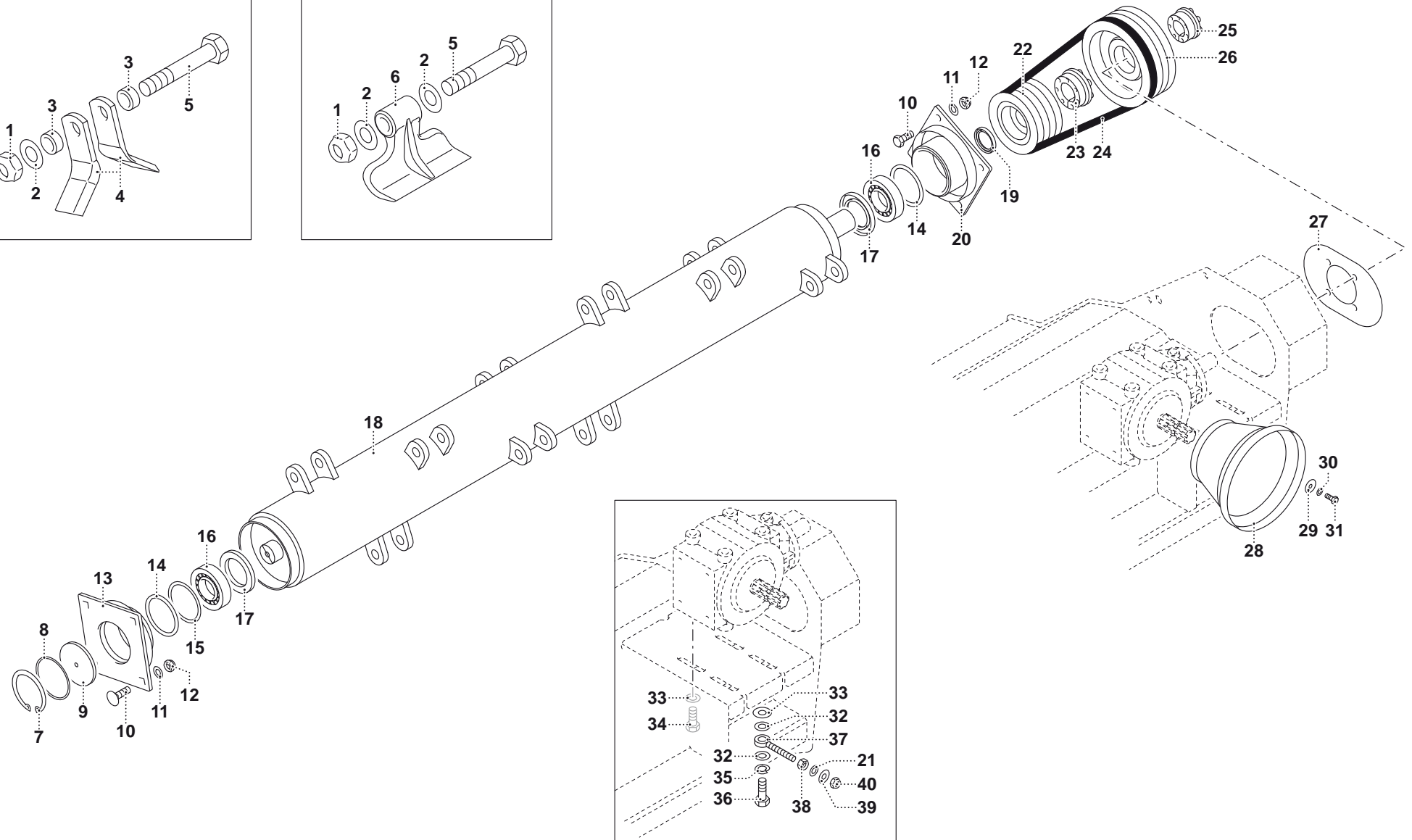
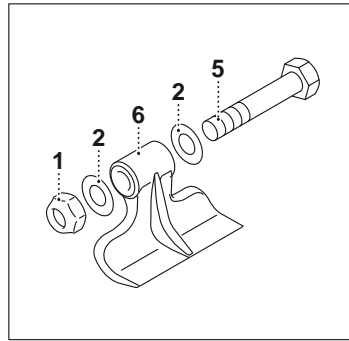
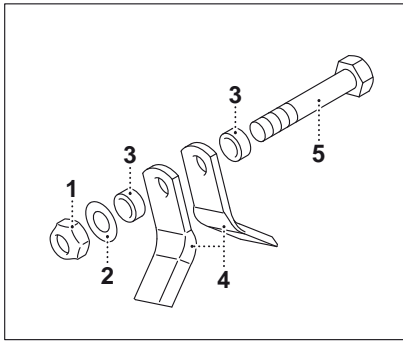
DISPOSITIVO ANTI-SHOCK OLEODINAMICO  
 HYDROPNEUMATISCHE ANFAHRTSICHERUNG  
 DISPOSITIF OLEOPNEUMATIQUE ANTI-CHOC  
 OLEOPNEUMATIC ANTI-SHOCK DEVICE

**TAV. 7.0**

ACCESSORI A COMPLETAMENTO  
 OPTIONS D'ACHEVEMENT  
 ZUBEHÖRE ZUR ERGANZUNG DER MASCHINE  
 CHOICE OF EQUIPMENT COMPL. MACHINE



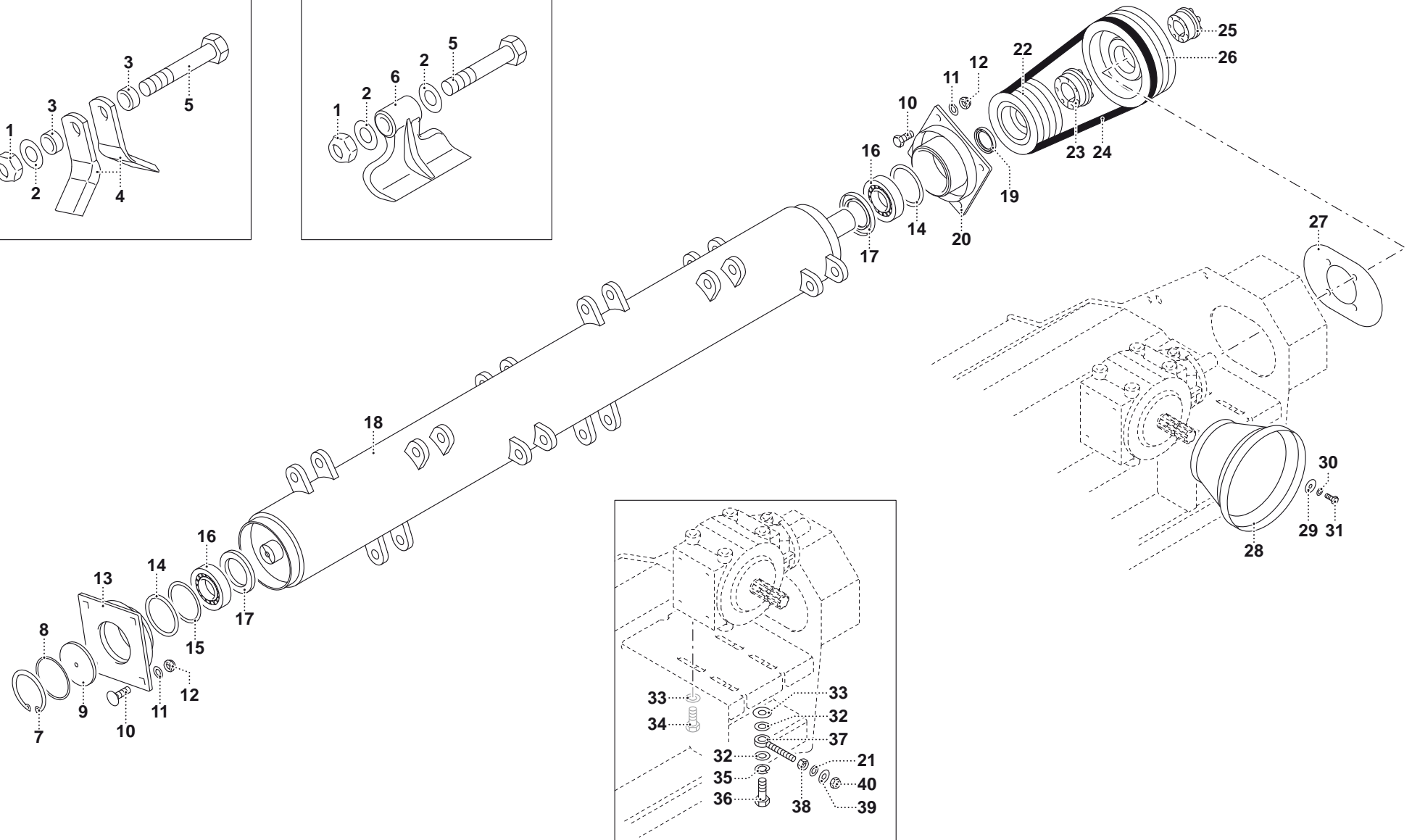
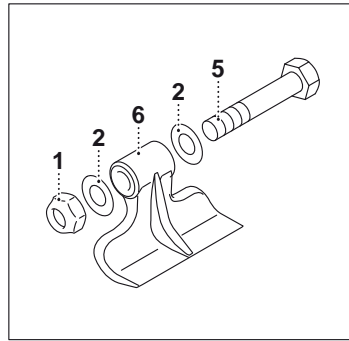
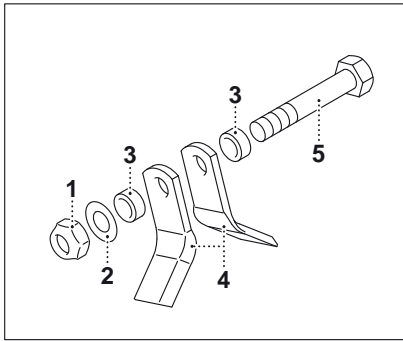




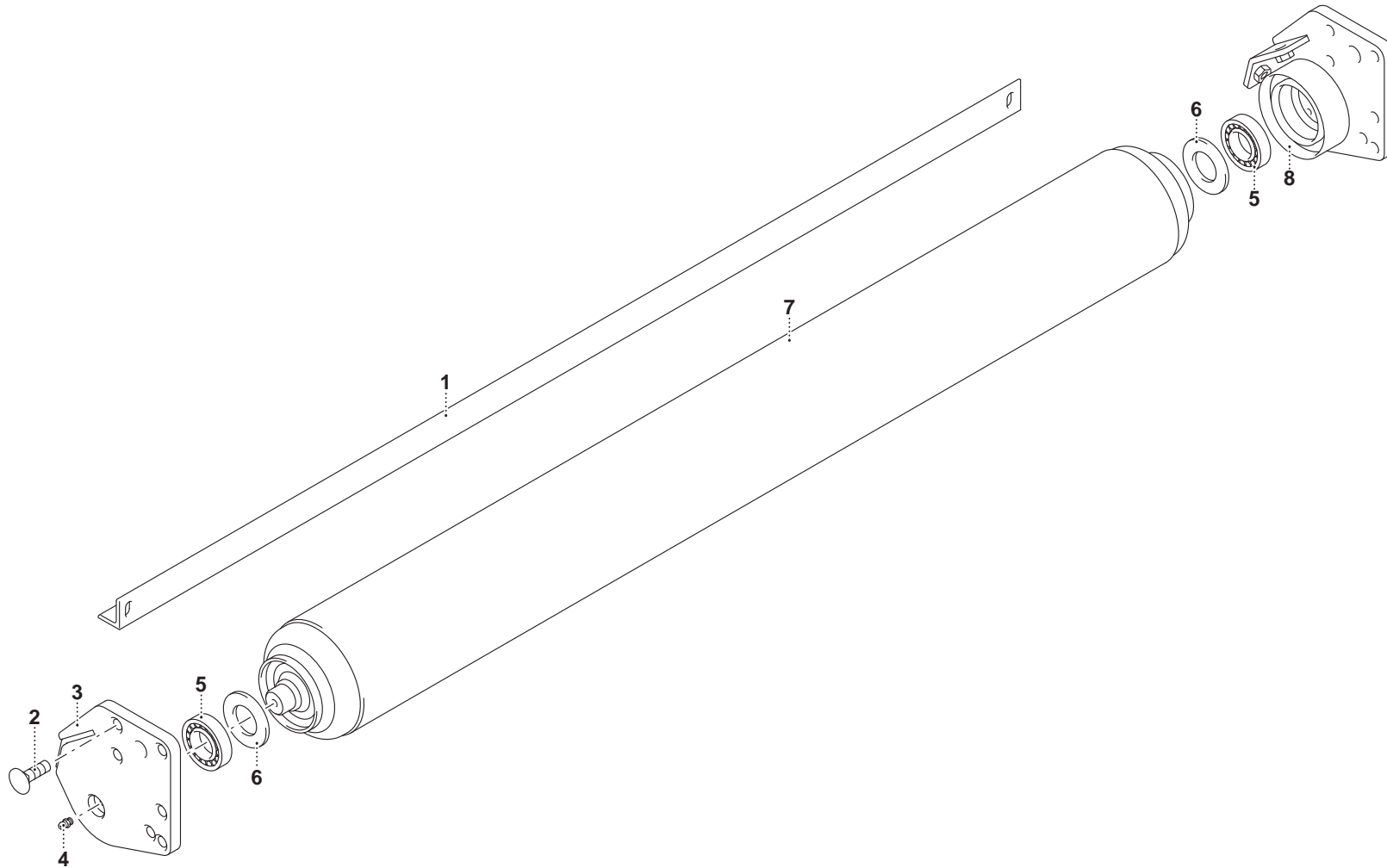
# MURATORI MTL 5

TAV. 2.0

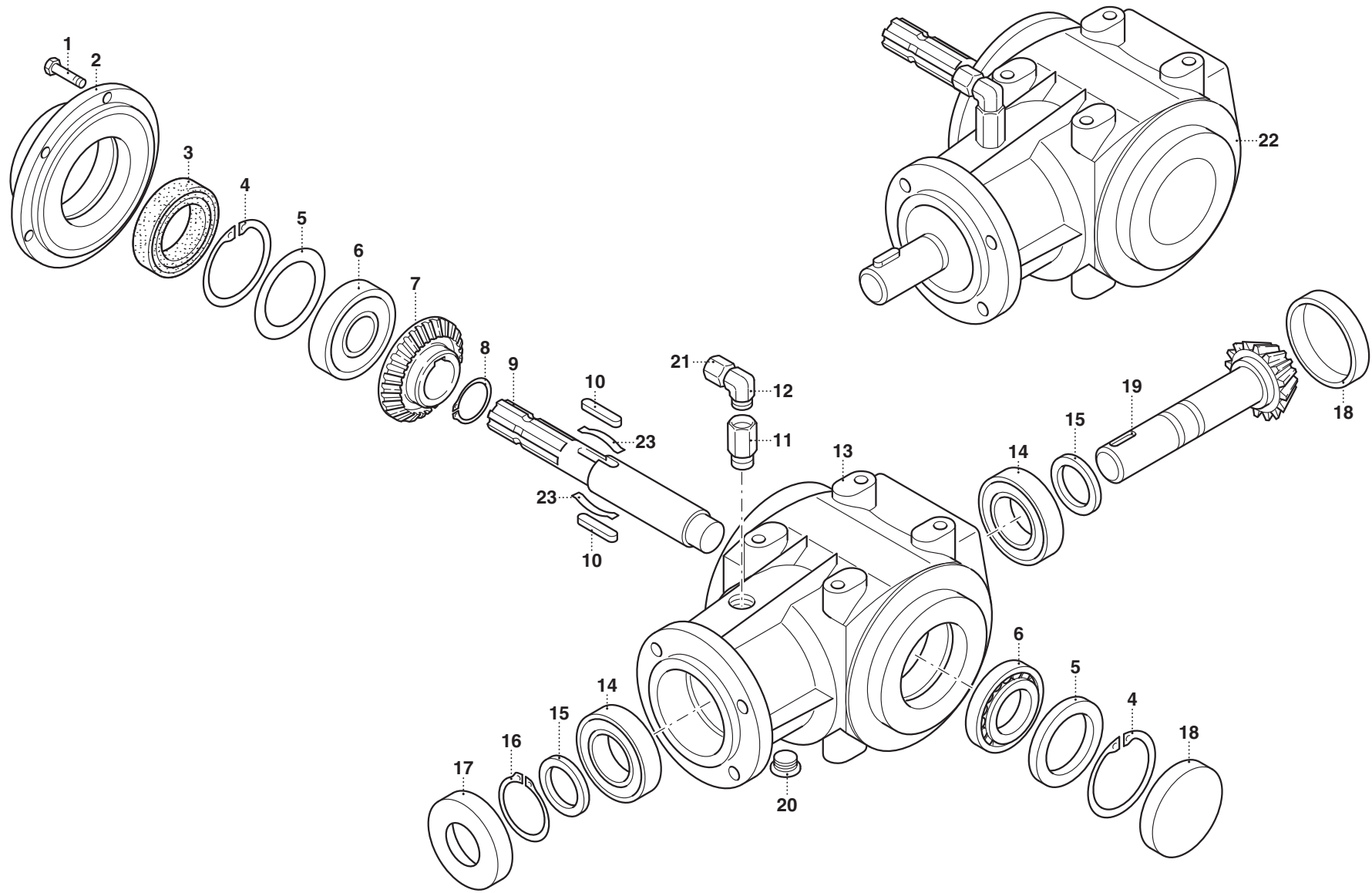
POS.	N° CODICE	Q.	DESCRIZIONE	DESIGNATION	BENENNUNG	DESCRIPTION	DESIGNAZIONE	Da matr.	Fino matr.
								De nr. serie Vom Seriennr. From serial nr.	Jusqu'au nr. serie Bis Seriennr. Up to serial nr.
1	62011000		DADO	ECROU	MUTTER	NUT	M16 AUTOBLOCC.		
2	61011600		RONDELLA	RONDELLE	SCHEIBE	WASHER	Ø16x35x4 ZNT		
3	32204800		BOCCOLA	DOUILLE	BUCHSE	BUSHING			
4	12022800		COLTELLO	COUTEAU	MESSER	KNIFE			
5	60048300		VITE	VIS	SCHRAUBE	SCREW	M16x105 12.9		
6	12022700		MAZZA	MARTEAUX	HAMMER	HAMMER			
7	63005500	1	ANELLO ELASTICO	BAGUE	SPANNRING	SNAP-RING	I 100 DIN472		
8	66019200	1	GUARNIZIONE	GARNITURE	DICHTUNG	SEAL	OR 4375		
9	39381200	1	DISCO	DISQUE	SCHEIBE	DISC			
10	60026700	8	VITE	VIS	SCHRAUBE	SCREW	TE 14x35 ZNT 5739		
11	61006600	8	RONDELLA	RONDELLE	SCHEIBE	WASHER	PIANA Ø14 ZNT		
12	62010800	8	DADO	ECROU	MUTTER	NUT	M14 AUTOBLOCC.		
13	40344600	1	SUPPORTO DX	SUPPORT (D)	HALTER (R)	SUPPORT (RH)			
14	68116300	2	SPESSORE	EPAISSEUR	DISTANZRING	SPACER	85x99x3		
15	68139900		SPESSORE	EPAISSEUR	DISTANZRING	SPACER	85x99x1		
16	67014500	2	CUSCINETTO	ROULEMENT	LAGER	BEARING	1309		
17	66001300	2	ANELLO TENUTA	JOINT D'ETANCHEITE	DICHTUNGSRING	JUNT RING	65x100x10		
18	42087800	1	ROTORE	ROTOR	ROTOR	ROTOR	135		
18	42087900	1	ROTORE	ROTOR	ROTOR	ROTOR	165		
18	42088000	1	ROTORE	ROTOR	ROTOR	ROTOR	200		
19	66004500	1	ANELLO TENUTA	JOINT D'ETANCHEITE	DICHTUNGSRING	JUNT RING	45x60x7		
20	40344500	1	SUPPORTO SX	SUPPORT (G)	HALTER (L)	SUPPORT (LH)			
21	61007500	2	RONDELLA	RONDELLE	SCHEIBE	WASHER	Ø12x36x2,5		
22	68060200	1	PULEGGIA	POULIE	RIEMENSCHIEBE	PULLEY	4SPB 140 F.80		
23	68060000	1	CALETTATORE	DOUILLE DE SERRAGE	SPANNBUCHSE	LOCKING DEVICE	45x80		
24	68116100	4	CINGHIA	COURROIE	KEILRIEMEN	BELT	XPB 1400		



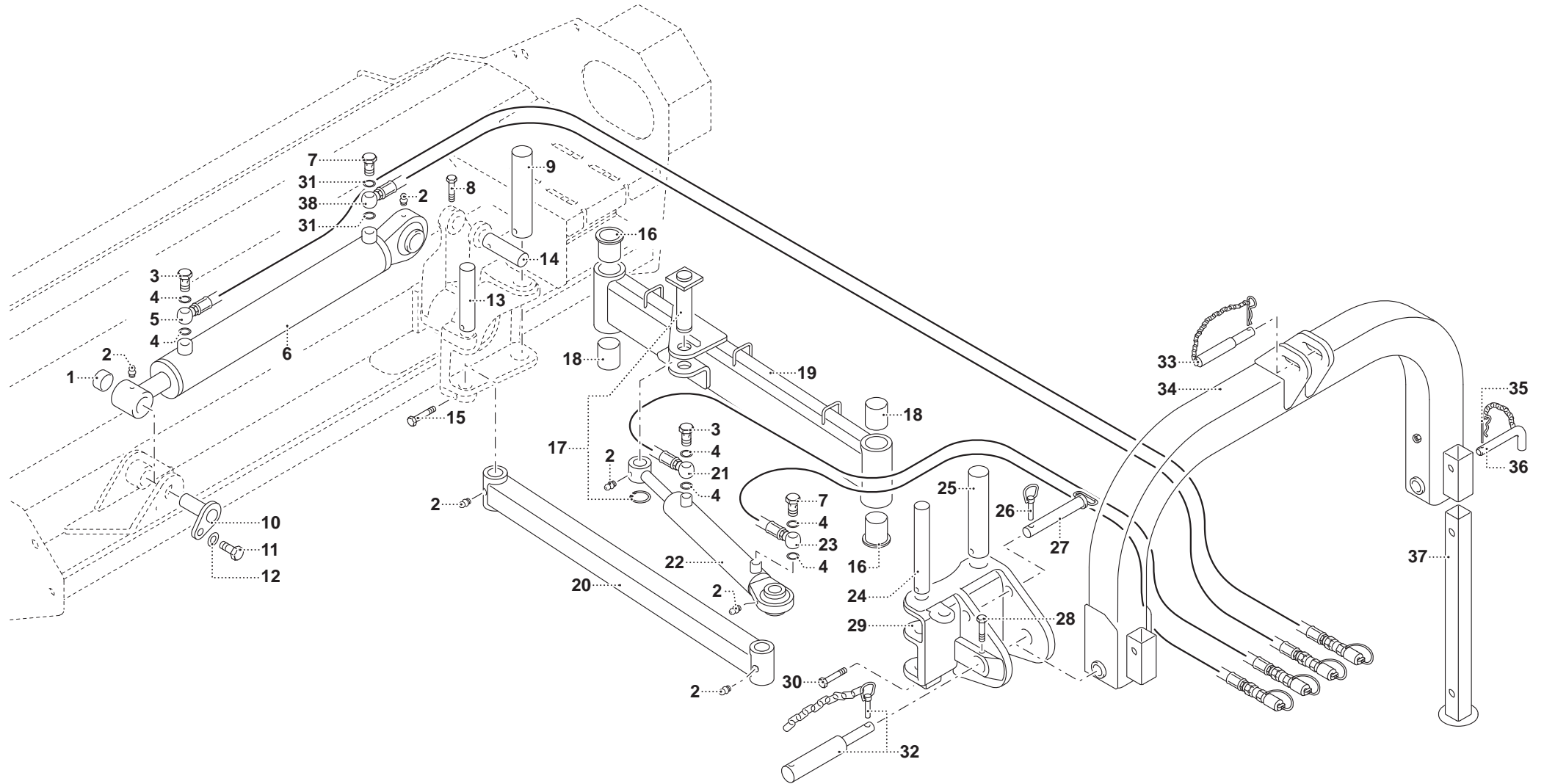








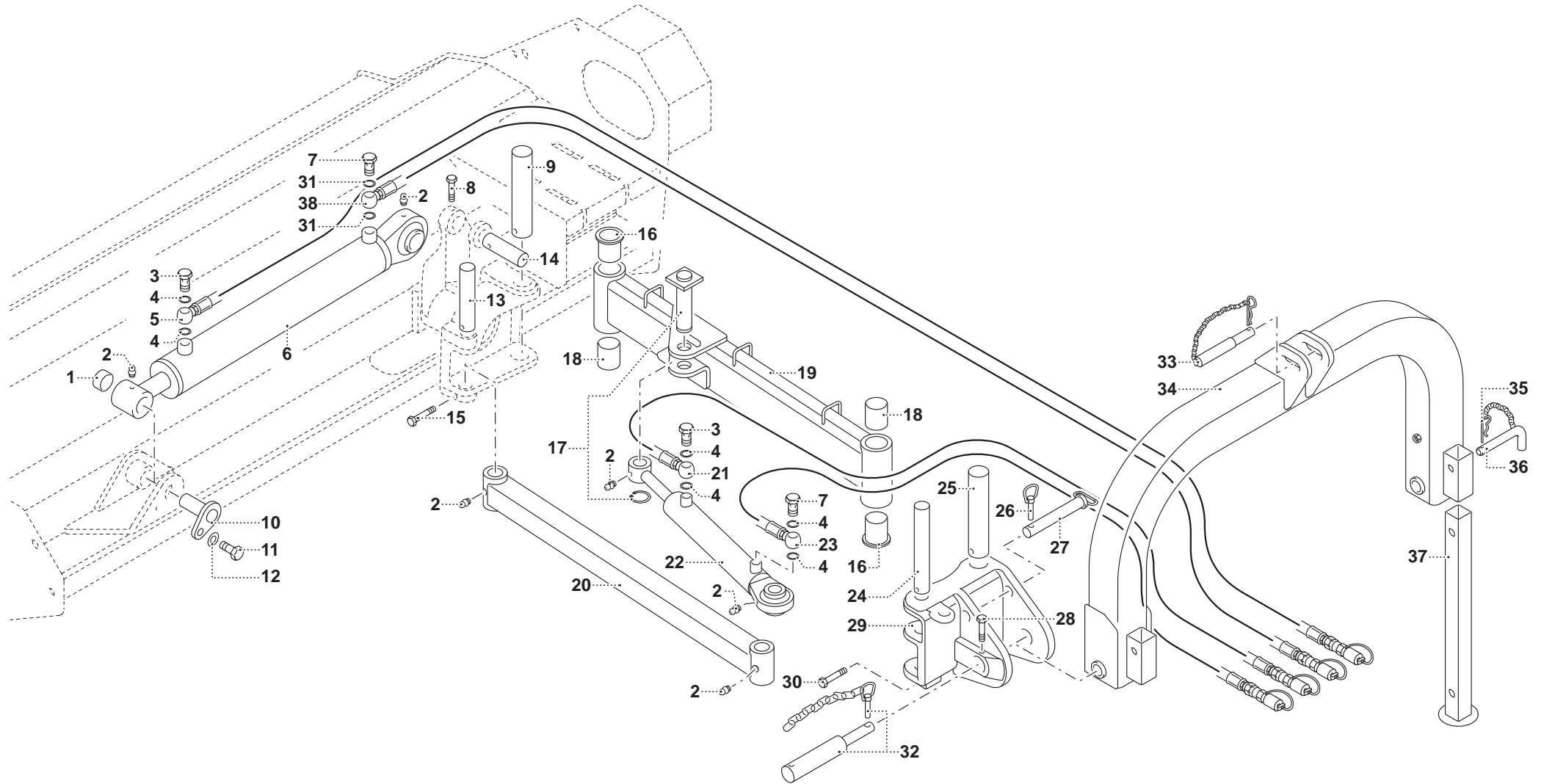




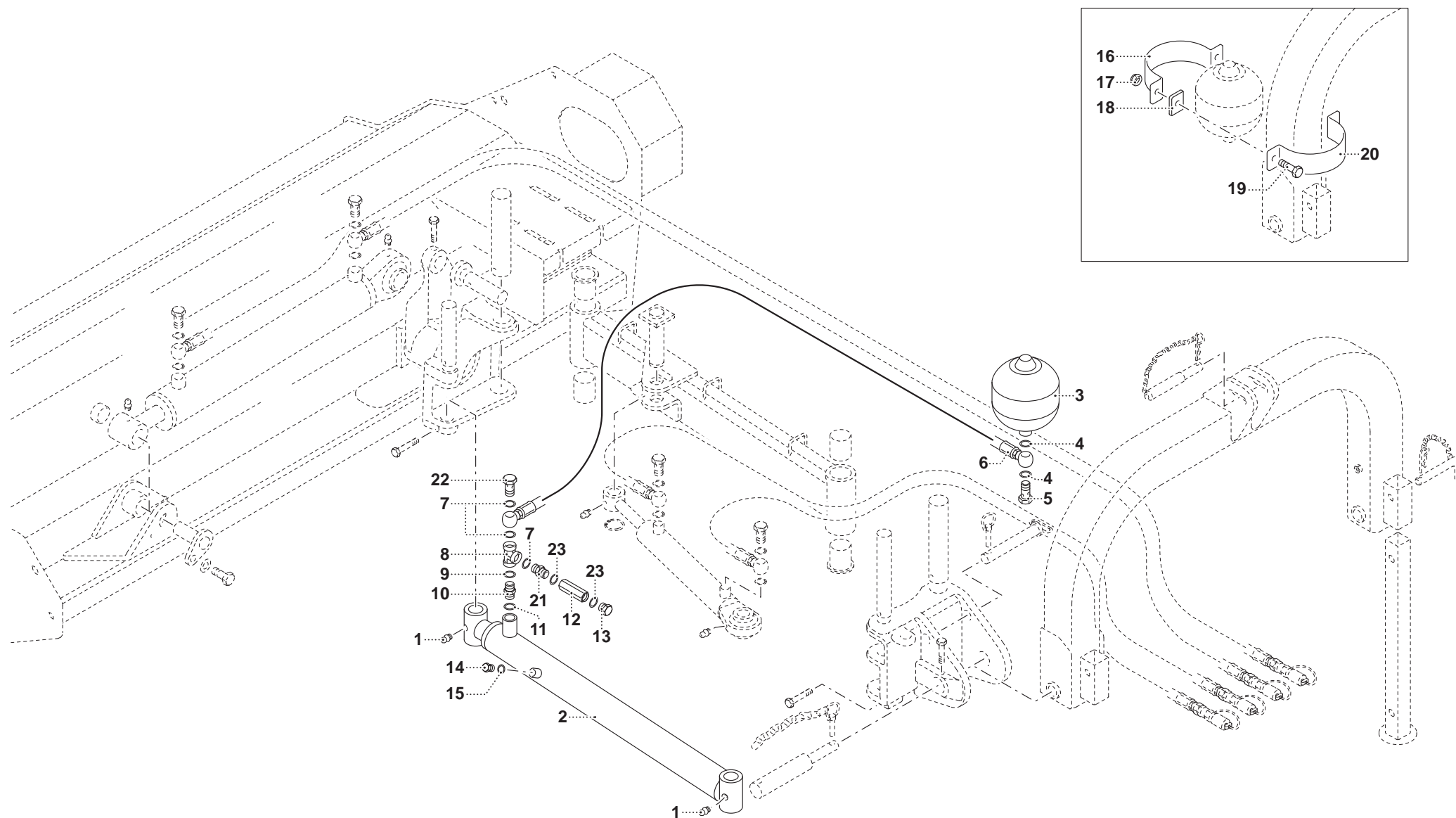
# MURATORI MTL 5

# TAV. 5.0

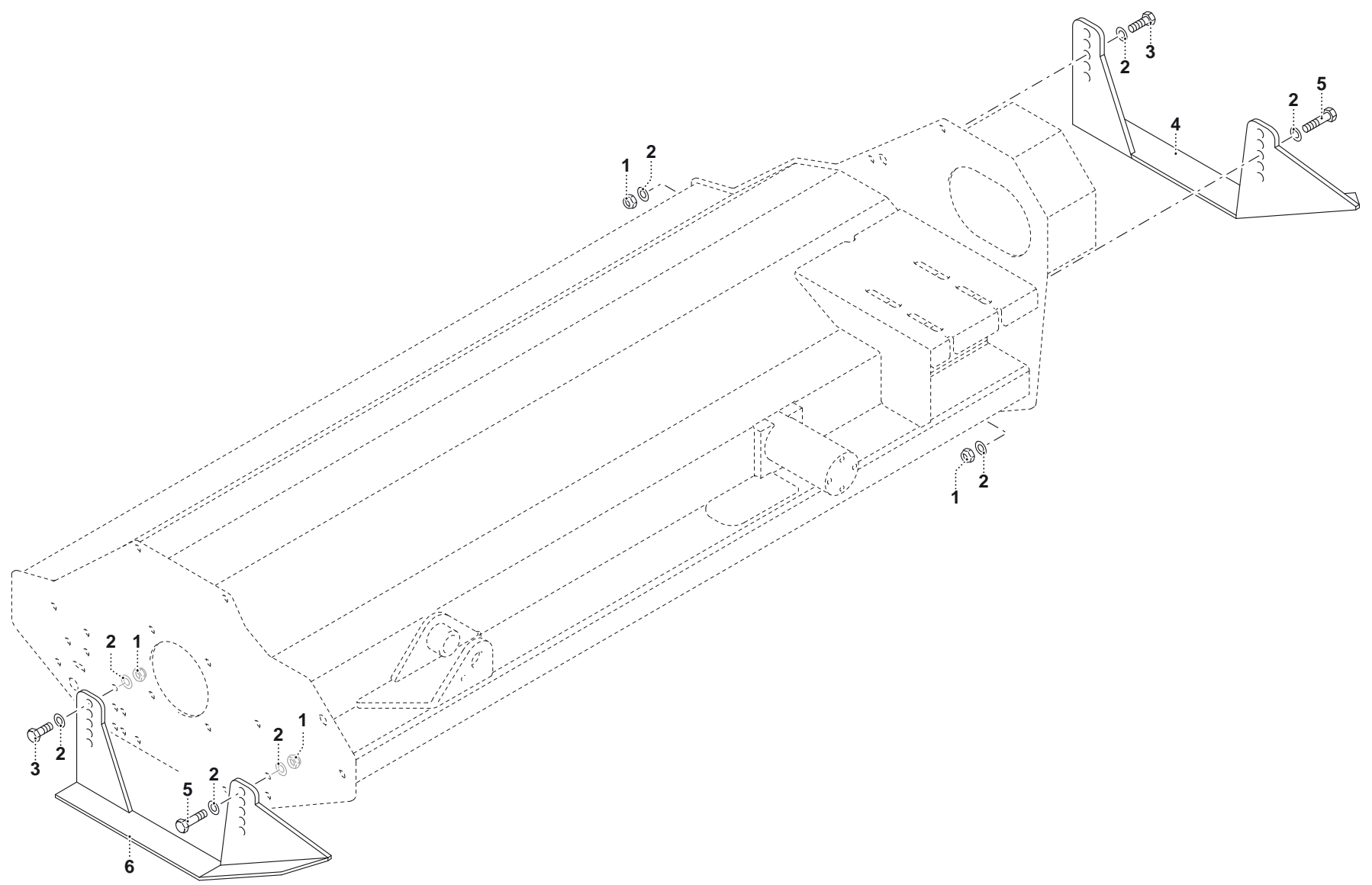
POS.	N° CODICE	Q.	DESCRIZIONE	DESIGNATION	BENENNUNG	DESCRIPTION	DESIGNAZIONE	Da matr. De nr. serie Vom Seriennr. From serial nr.	Fino matr. Jusqu'au nr. serie Bis Seriennr. Up to serial nr.
1	31105300	1	BOCCOLA	DOUILLE	BUCHSE	BUSHING			
2	64005300	1	INGRASSATORE	GRAISSEUR	SCHMIERNIPPEL	GREASE FITTING	M8x1 DIRITTO		
3	60023700	1	VITE	VIS	SCHRAUBE	SCREW	FORATA 3/8"		
4	61005600	2	RONDELLA	RONDELLE	SCHEIBE	WASHER	RAME 3/8"		
5	68116400	1	TUBO FLESSIBILE	TUYAU FLEXIBLE	SCHLAUCH	HOSE			
6	68140000	1	CILINDRO	CYLINDRE	ZYLINDER	CYLINDER			
7	60043300	1	VITE	VIS	SCHRAUBE	SCREW	FORATA 1/2"		
8	60023100	1	VITE	VIS	SCHRAUBE	SCREW	TE M10x70 ZNT UNI 5737		
9	31105400	1	PERNO	PIVOT	BOLZEN	PIN			
10	40344800	1	PERNO	PIVOT	BOLZEN	PIN			
11	60023000	1	VITE	VIS	SCHRAUBE	SCREW	M12x30 ZNT UNI 5739		
12	61005000	1	RONDELLA	RONDELLE	SCHEIBE	WASHER	PIANA Ø12 ZNT UNI 6592		
13	31105500	1	PERNO	PIVOT	BOLZEN	PIN			
14	31105600	1	PERNO	PIVOT	BOLZEN	PIN			
15	60048200	1	VITE	VIS	SCHRAUBE	SCREW	TE M10x85 ZNT UNI 5737		
16	32208000	1	BOCCOLA	DOUILLE	BUCHSE	BUSHING			
17	31105700	1	PERNO	PIVOT	BOLZEN	PIN			
18	32208100	1	BOCCOLA	DOUILLE	BUCHSE	BUSHING			
19	40306400	1	BRACCIO	BRAS	ARM	ARM			
20	40306300	1	MONTANTE	MONTANT	SÄULE	PILLAR			
21	68116600	1	TUBO FLESSIBILE	TUYAU FLEXIBLE	SCHLAUCH	HOSE			
22	68116900	1	CILINDRO	CYLINDRE	ZYLINDER	CYLINDER			
23	68116700	1	TUBO FLESSIBILE	TUYAU FLEXIBLE	SCHLAUCH	HOSE			
24	31105800	1	PERNO	PIVOT	BOLZEN	PIN			
25	31105900	1	PERNO	PIVOT	BOLZEN	PIN			
26	64001900	1	SPINA	GOUPILLE	STIFT	PIN			



















**MURATORI S.p.A.**

Via Pavarello, 21 - 41051 Castelnuovo Rangone (MO) Italy - Tel. 059.5330611 Fax 059.537259

**[www.muratoriequip.it](http://www.muratoriequip.it)** *info@muratoriequip.it*

**Capitale sociale Euro 480.000 interamente versato**

**Registro Imprese di Modena**

**Codice fiscale e numero d'iscrizione: 00708860366**