

MURATORIM

**TIPO-TYPE-TYP
MC 20**

CATALOGO RICAMBI
Catalogue Pièces Detachées
Ersatzteilkatalog
Spare Parts Catalogue

EDIZIONE 06/2006

Per ordinare parti di ricambio specificare:

- tipo e matricola della macchina (apposti sulla macchina o sui documenti di acquisto);
- numero del riferimento del pezzo nel disegno (Pos.), numero della tavola (Tav.) e numero di codice

N.B.: le indicazioni destro o sinistro vengono date guardando la macchina da dietro.

Pour les commandes de pièces de rechange veuillez spécifier:

- *type et numéro de série de la machine (indiqués sur la machine et sur le bon d'achat);*
- *numéro de référence du pièce sur le plan (Pos.), numéro du plan (Tav.) et numéro de code (codice)*

N.B.: les indications droite ou gauche sont données en regardant la machine par derrière.

Zum Bestellen von Ersatzteilen folgendes angeben:

- *Typ und Serien-Nr. der Maschine (zu finden auf der Maschine oder der Einkaufspapieren);*
- *Bezug-Nr. des Ersatzteils auf der Zeichnung (Pos.), Zeichnungsnummer (Tav.) und Kodenummer (codice)*

N.B.: Die Angaben rechts und links verstehen sich so, dass man hinter der Maschine steht.

When ordering spare parts specify:

- machine type and serial number (found on the machine or on the purchasing documents);
- reference number of the part on the relative drawing (Pos.) number of the drawing (Tav.) and part number (codice)

N.B.: right-hand or left-hand indications are made by viewing the machine from the rear.

TAV. 1.0

MONTANTI
MONTANTS
HUBGERÜST
UPRIGHTS

TAV. 2.0

FORCHE E CARRELLO TRASLATORE
FOURCHES ET CHARIOT DE DEPLACEMENT
GABEL UND SCHIEBERSCHLITTEN
FORKS AND TRASLATION TRUCK

TAV. 3.0

STRINGICARICO
SERRE-CAISSES
KISTENGREIFER
LOAD CLAMPING DEVICE

TAV. 4.0

STRINGICARICO
SERRE-CAISSES
KISTENGREIFER
LOAD CLAMPING DEVICE

TAV. 5.0

IMPIANTO IDRAULICO
INSTALLATION HYDR.
HYDRAULIKANLAGE
HYDRAULIC SYSTEM

TAV. 6.0

IMPIANTO IDRAULICO - STRINGICARICO
INSTALLATION HYDR. - SERRE-CAISSES
HYDRAULIKANLAGE - KISTENGREIFER
HYDR. SYSTEM - LOAD CLAMPING DEVICE

TAV. 7.0

IMPIANTO IDRAULICO - DISTRIBUTORE COMANDI
INSTALLATION HYDR. - DISTRIB. COMMANDES
HYDRAULIKANLAGE - STEUERBLOCK
HYDR. SYSTEM - CONTROL VALVE

TAV. 8.0

CILINDRO BRANDEGGIO
CYLINDRE INCLINAISON
KIPPZYLINDER
TILTING CYLINDER

TAV. 9.0

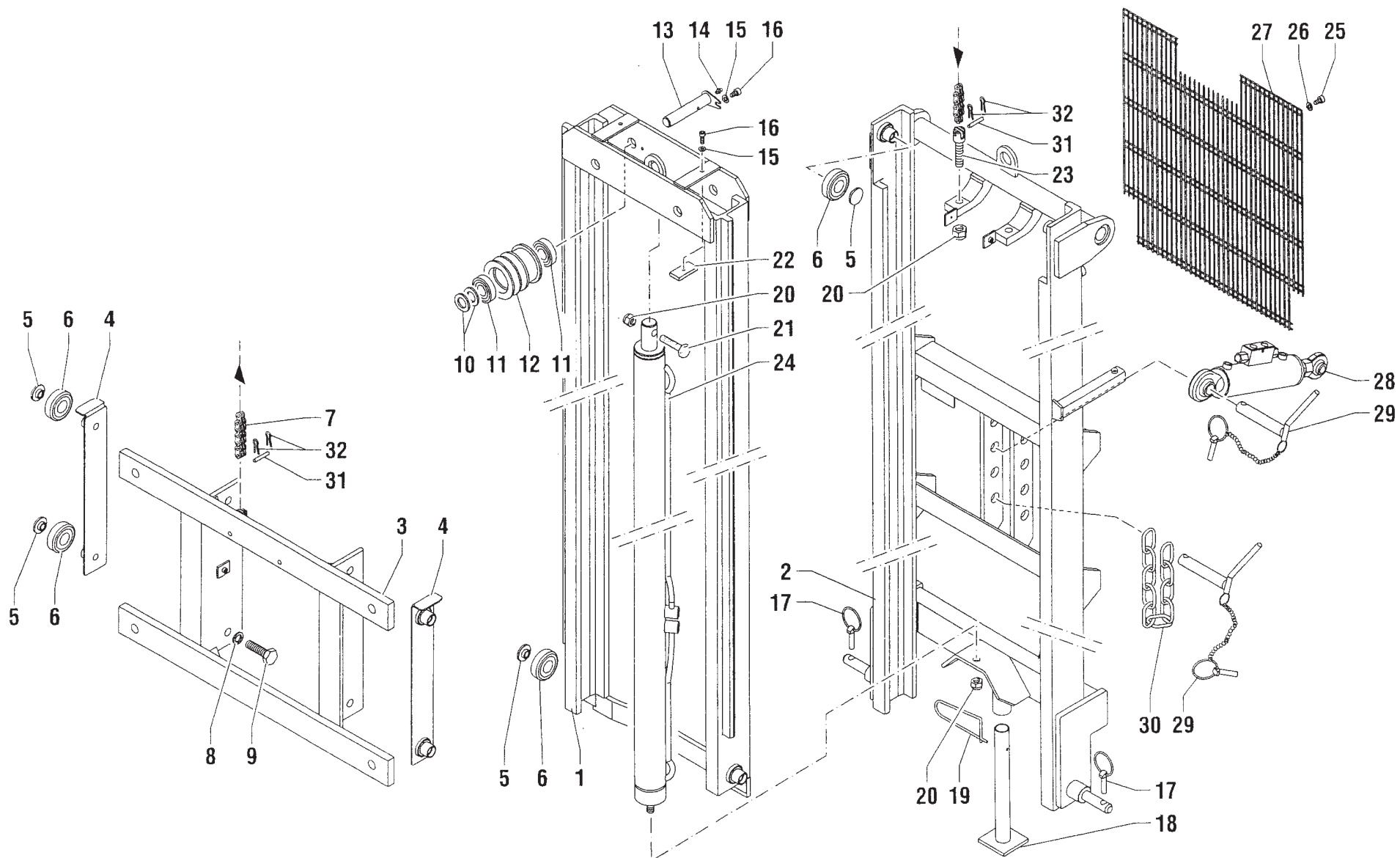
CILINDRO SOLLEVAMENTO
VERIN DE LEVAGE
HEBEBOCK
LIFTING JACK

TAV. 10.0

CILINDRO STRINGICARICO
CYLINDRE SERRE-CAISSES
ZYLINDER KISTENGREIFER
LOAD CLAMPING CYLINDER

TAV. 11.0

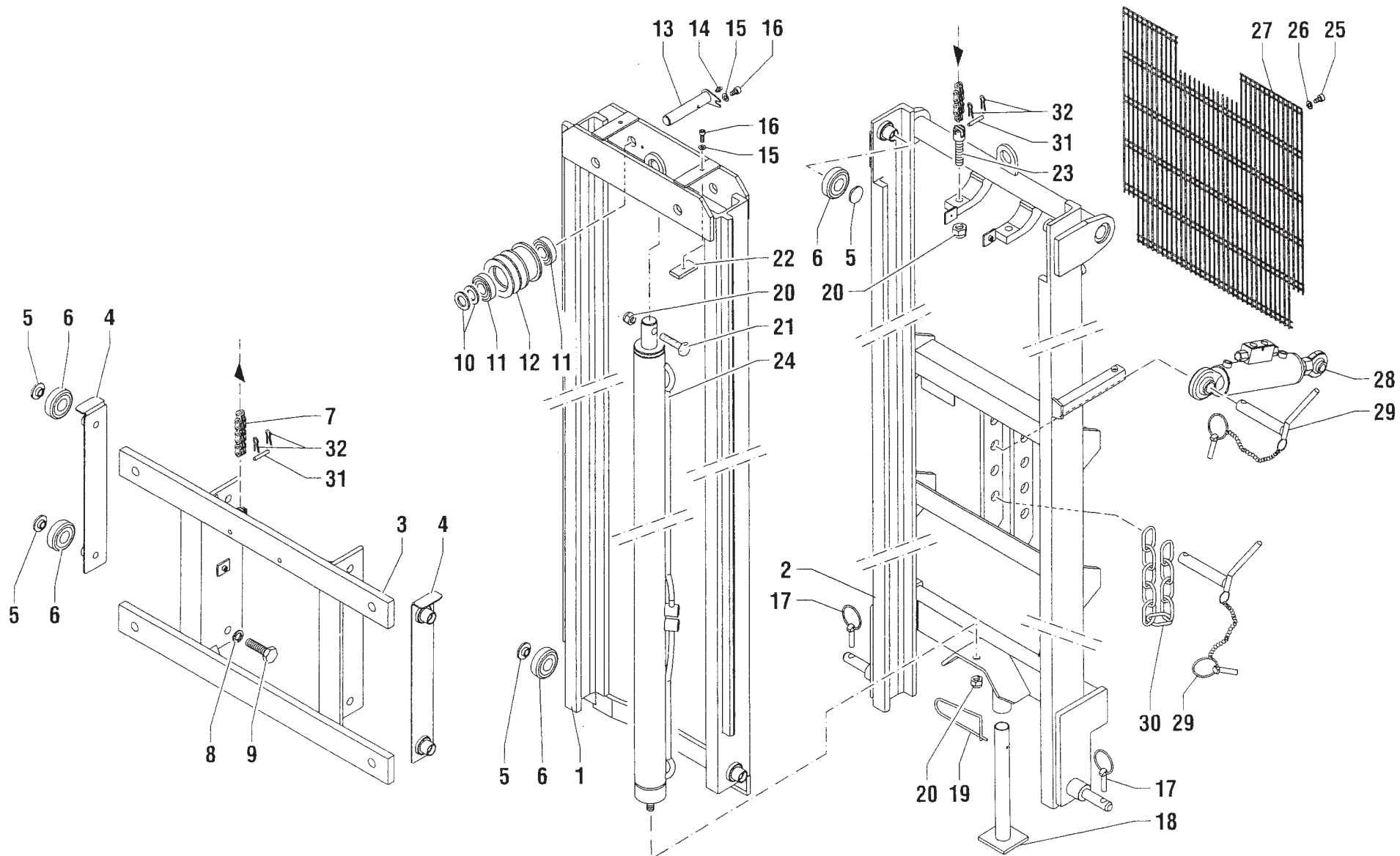
CILINDRO TRASLATORE
CYLINDRE DEPLACEMENT
ZYLINDER SCHEIBER
TRASLATION CYLINDER

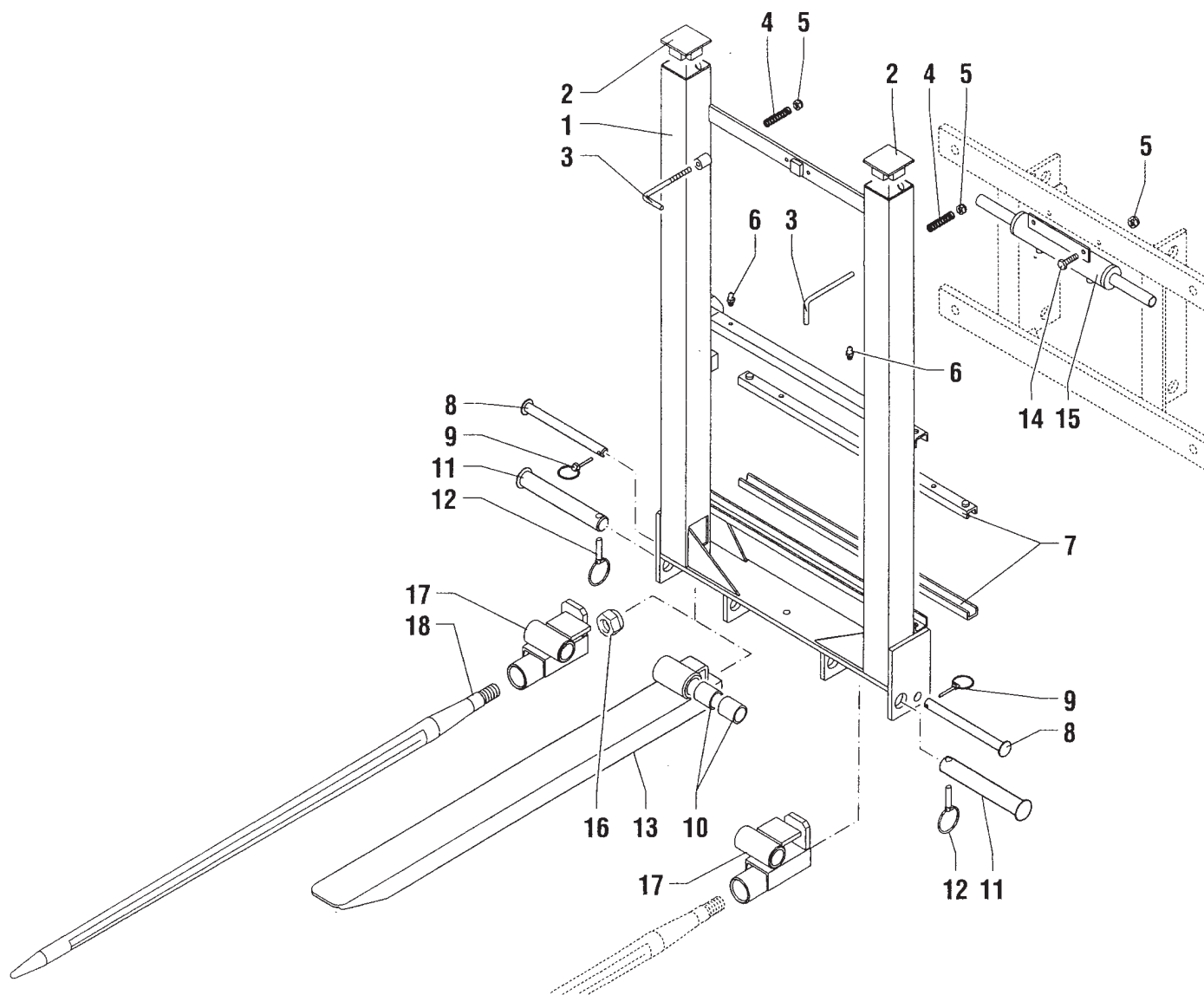


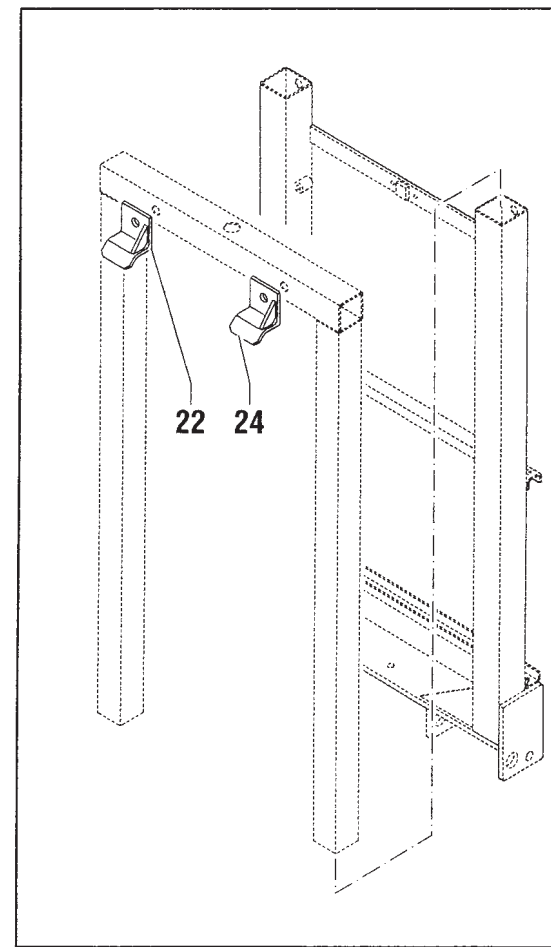
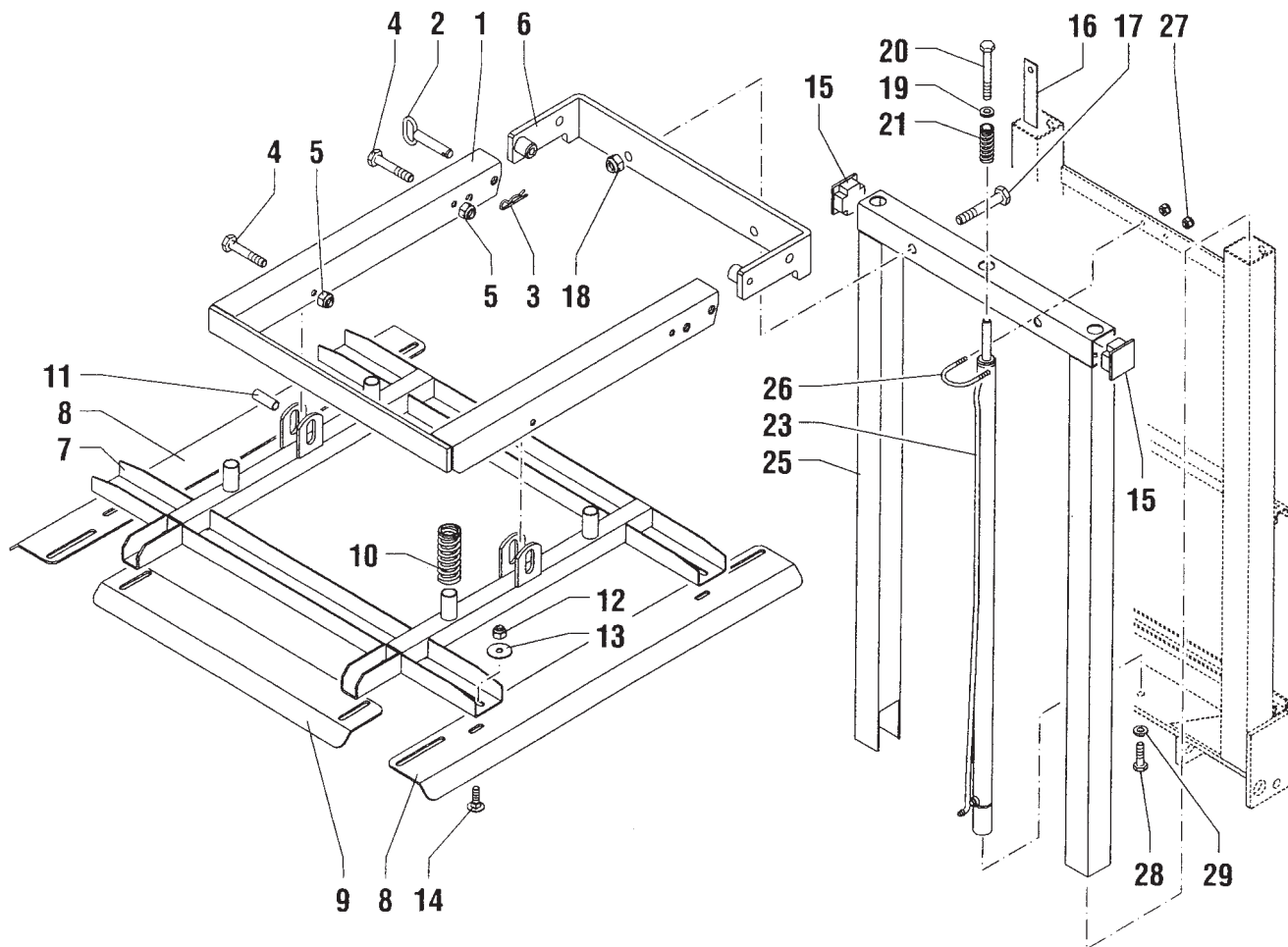
MURATORI MC 20

TAV. 1.0

POS.	N° CODICE	Q.	DESCRIZIONE	DESIGNATION	BENENNUNG	DESCRIPTION	DESIGNAZIONE	Da matr. De nr. serie Vom Seriennr. From serial nr.	Fino matr. Jusqu'au nr. serie Bis Seriennr. Up to serial nr.
1	40292700	1	MONTANTE INTERNO	MONTANT	SAEULE	PILLAR	220		
1	40292800	1	MONTANTE INTERNO	MONTANT	SAEULE	PILLAR	270		
1	40292900	1	MONTANTE INTERNO	MONTANT	SAEULE	PILLAR	320		
1	40293000	1	MONTANTE INTERNO	MONTANT	SAEULE	PILLAR	370		
2	40293100	1	MONTANTE ESTERNO	MONTANT	SAEULE	PILLAR	220		
2	40293200	1	MONTANTE ESTERNO	MONTANT	SAEULE	PILLAR	270		
2	40293300	1	MONTANTE ESTERNO	MONTANT	SAEULE	PILLAR	320		
2	40293400	1	MONTANTE ESTERNO	MONTANT	SAEULE	PILLAR	370		
3	40293500	1	CARRELLO	CHARIOT	RAHMEN	SLIDING FRAME			
4	40293600	2	RISCONTRO CARRELLO	BUTEE CHARIOT	ANSCHLAG SCHLITTEN	TRUCK STOP			
5	40293700	8	PATTINO	PATIN	GLEITBLOCK	PAD			
6	67021000	8	CUSCINETTO	ROULEMENT	LAGER	BEARING			
7	68108800	2	CATENA SOLLEVAMENTO	CHAINE	KETTE	CHAIN	220		
7	68108900	2	CATENA SOLLEVAMENTO	CHAINE	KETTE	CHAIN	270		
7	68109000	2	CATENA SOLLEVAMENTO	CHAINE	KETTE	CHAIN	320		
7	68109100	2	CATENA SOLLEVAMENTO	CHAINE	KETTE	CHAIN	370		
8	61010600	4	RONDELLA	RONDELLE	SCHEIBE	WASHER	18		
9	60043900	4	VITE	VIS	SCHRAUBE	SCREW	18x50		
10	61010700	4	RONDELLA	RONDELLE	SCHEIBE	WASHER	18		
11	67021100	4	CUSCINETTO	ROULEMENT	LAGER	BEARING			
12	31092800	2	CARRUCOLA	POULIE	SEILROLLE	SHEAVE			
13	40290000	2	PERNO	PIVOT	BOLZEN	PIN			
14	64000200	2	INGRASSATORE	GRAISSEUR	SCHMIERNIPPEL	GREASE FITTING			
15	61004700	4	RONDELLA	RONDELLE	SCHEIBE	WASHER	PIANA 8		
16	60043600	4	VITE	VIS	SCHRAUBE	SCREW	TCEI 8x12		
17	64001900	2	SPINOTTO A SCATTO	BROCHE DE SÛRETE	SPRINGSTECKER	RELEASE PIN			



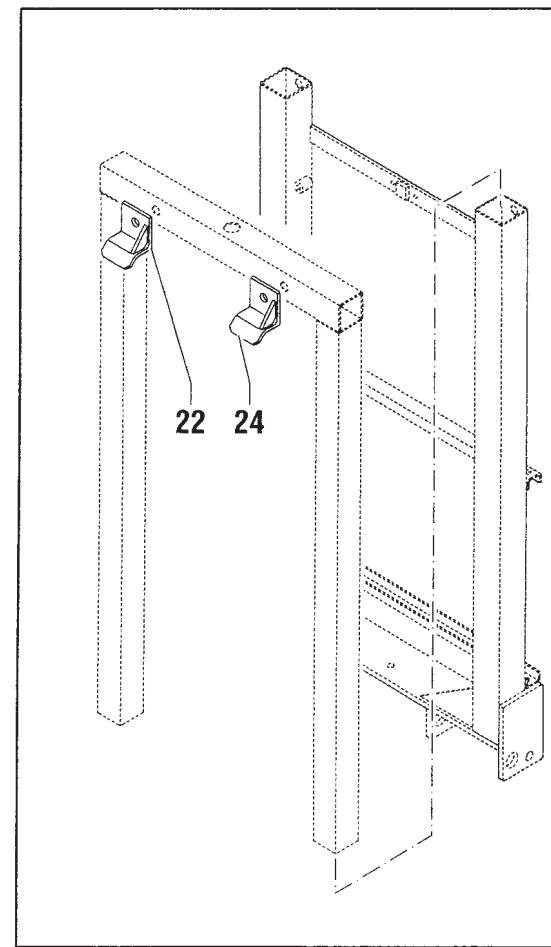
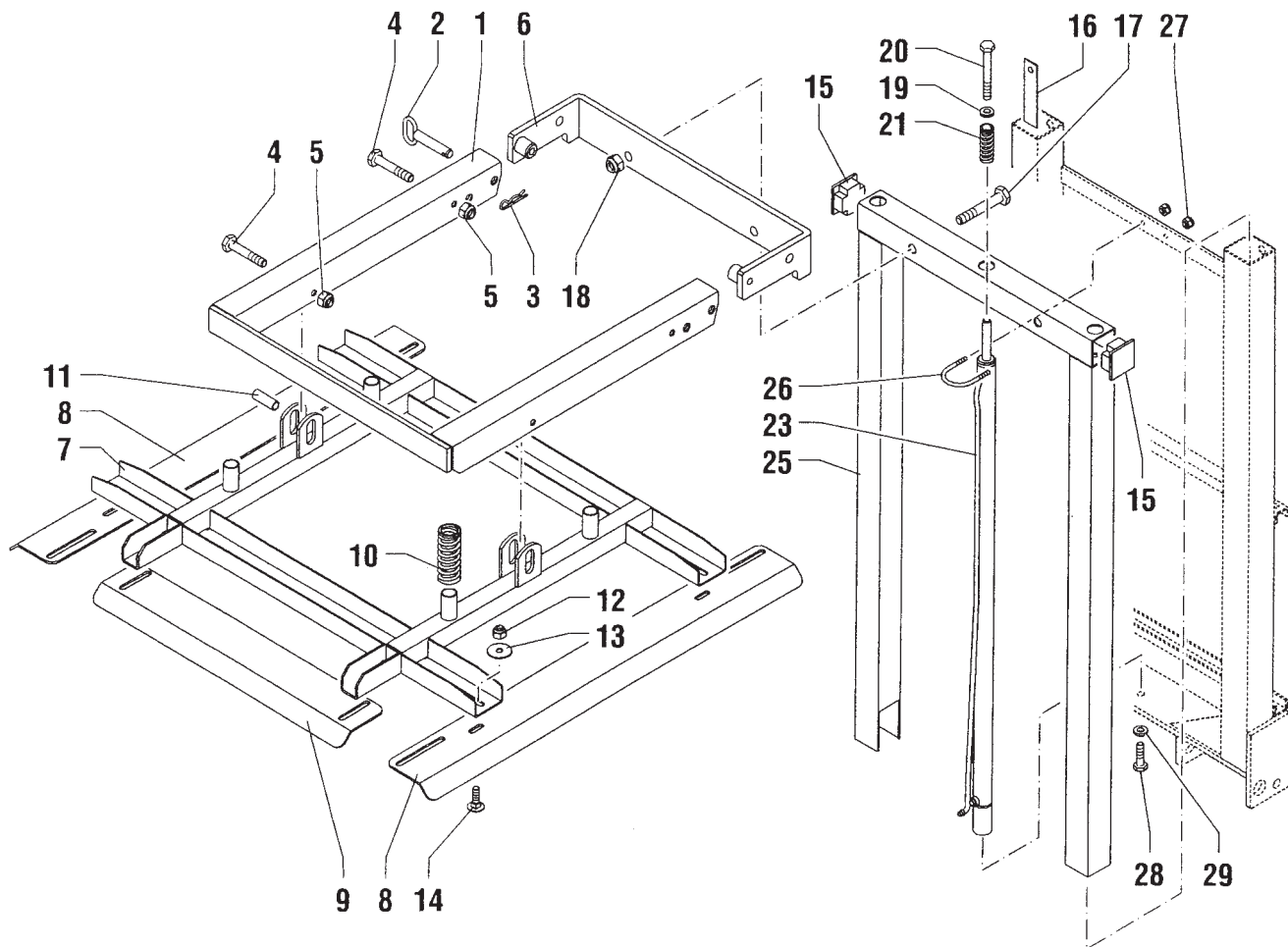


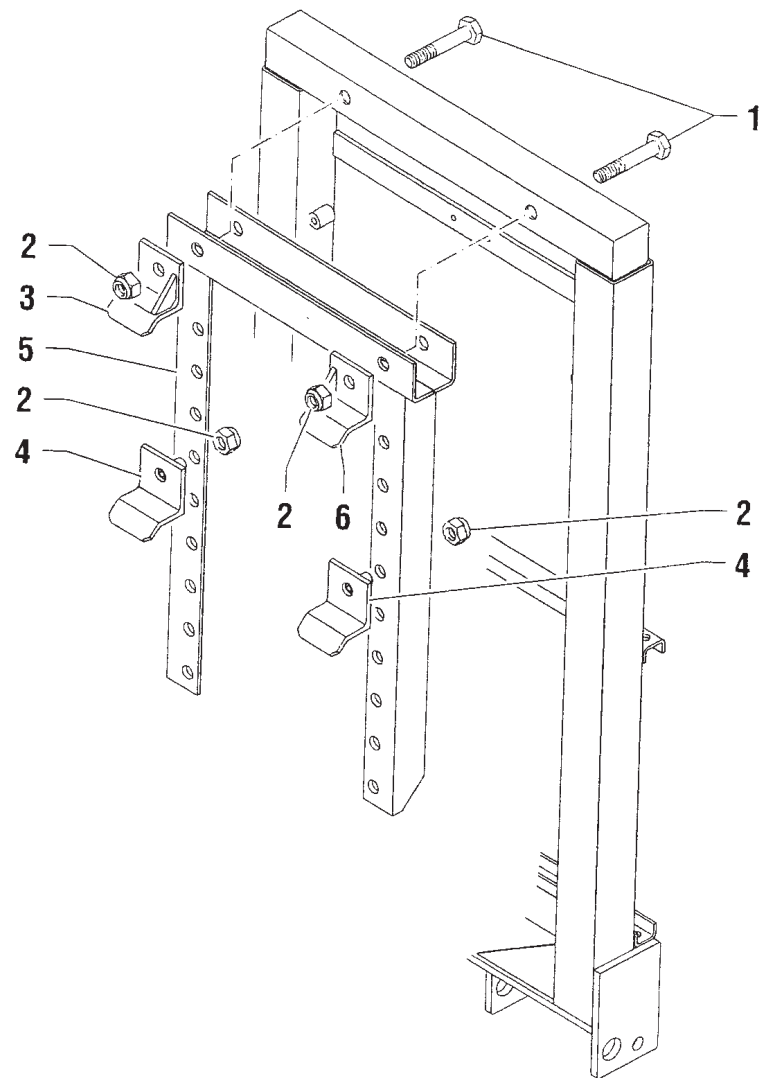


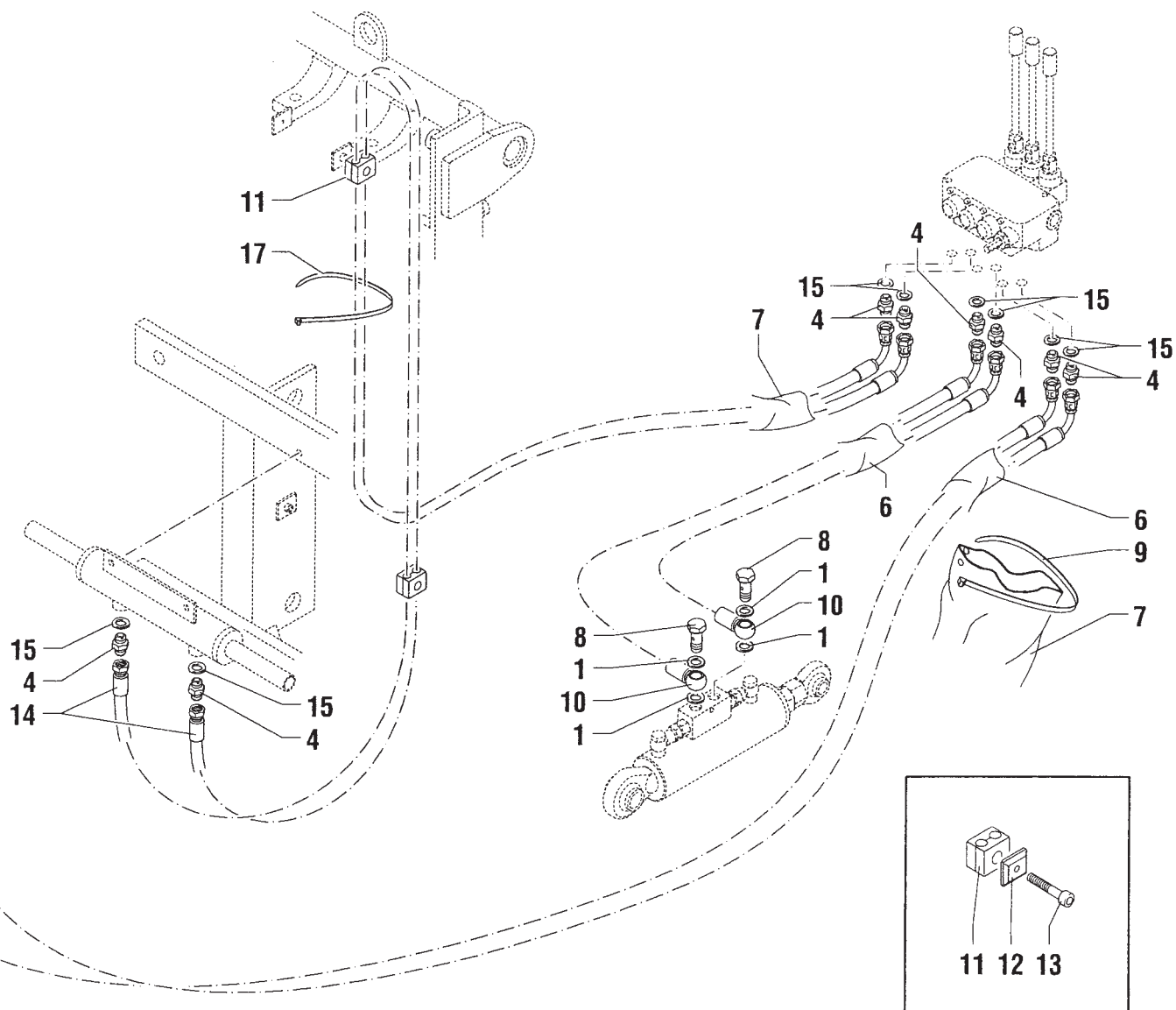
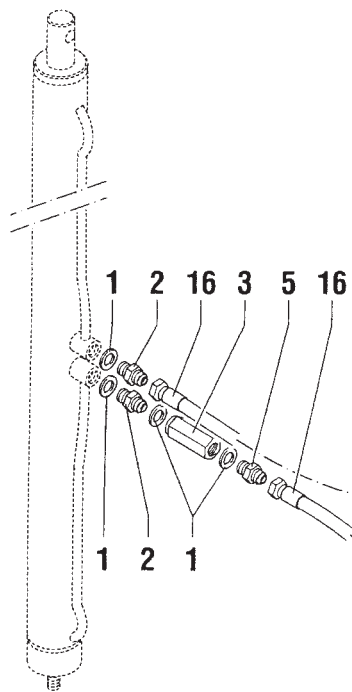
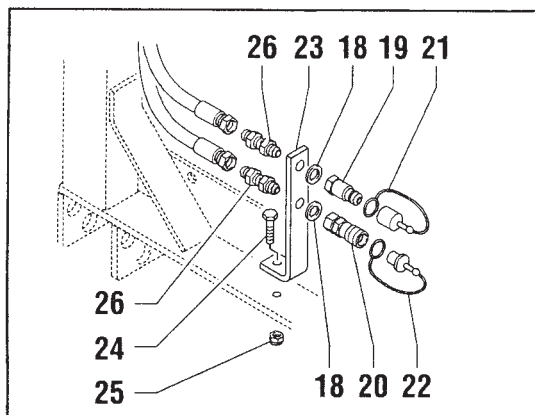
MURATORI MC 20

TAV. 3.0

POS.	N° CODICE	Q.	DESCRIZIONE	DESIGNATION	BENENNUNG	DESCRIPTION	DESIGNAZIONE	Da matr. De nr. serie Vom Seriennr. From serial nr.	Fino matr. Jusqu'au nr. serie Bis Seriennr. Up to serial nr.
1	40290500	1	FRONTALE STRINGICARICO	FRONTAL SERRE-CAISSES	VORDERTEIL KISTENGREIFER	LOAD CLAMPING FRONT			
2	40290600	2	PERNO	PIVOT	BOLZEN	PIN			
3	64000300	2	COPIGLIA	COUPILLE	SPLINT	COTTER PIN			
4	60023400	4	VITE	VIS	SCHRAUBE	SCREW	14x90		
5	62010800	4	DADO	ECROU	MUTTER	NUT	M 14		
6	40290700	1	SUPPORTO	SUPPORT	HALTERUNG	SUPPORT			
7	40290800	1	SUPPORTO	SUPPORT	HALTERUNG	SUPPORT			
8	39300400	2	BANDELLA STRINGICARICO	COTES SERRE-CAISSES	SEITETEIL KISTENGREIFER	LOAD CLAMPING SIDES			
9	39300500	1	BANDELLA STRINGICARICO	COTES SERRE-CAISSES	SEITETEIL KISTENGREIFER	LOAD CLAMPING SIDES			
10	68104600	4	MOLLA	RESSORT	FEDER	SPRING			
11	31093300	2	PERNO	PIVOT	BOLZEN	PIN			
12	62010600	4	DADO	ECROU	MUTTER	NUT	M 12 AUTOBLOCC.		
13	61005000	4	RONDELLA	RONDELLE	SCHEIBE	WASHER	PIANA 12		
14	60041200	4	VITE	VIS	SCHRAUBE	SCREW			
15	68104700	2	TAPPO	BOUCHON	STOPFEN	PLUG			
16	68104800	2	PATTINO	PATIN	GLEITBLOCK	PAD			
17	60016100	2	VITE	VIS	SCHRAUBE	SCREW	M 20x120		
18	62011400	2	DADO	ECROU	MUTTER	NUT	M 20 AUTOBLOCC.		
19	61005800	1	RONDELLA	RONDELLE	SCHEIBE	WASHER	20		
20	60024200	1	VITE	VIS	SCHRAUBE	SCREW	M 14x110		
21	68104900	1	MOLLA	RESSORT	FEDER	SPRING			
22	40291100	1	GANCIO SX	CROCHET	HAKEN	HOOK			
23	68108700	1	CILINDRO STRINGICARICO	CYLINDRE SERRE-CAISSES	KISTENGREIFER ZYLINDER	LOAD CLAMPING CYLINDER	vedi - voir - siehe - see TAV. 10.0		
24	40291200	1	GANCIO DX	CROCHET	HAKEN	HOOK			
25	40291000	1	MONTANTE	MONTANT	SAEULE	PILLAR			
26	68105000	1	CAVALLOTTO	ARRETOIR	KLEMMSTUECK	UBOLT			



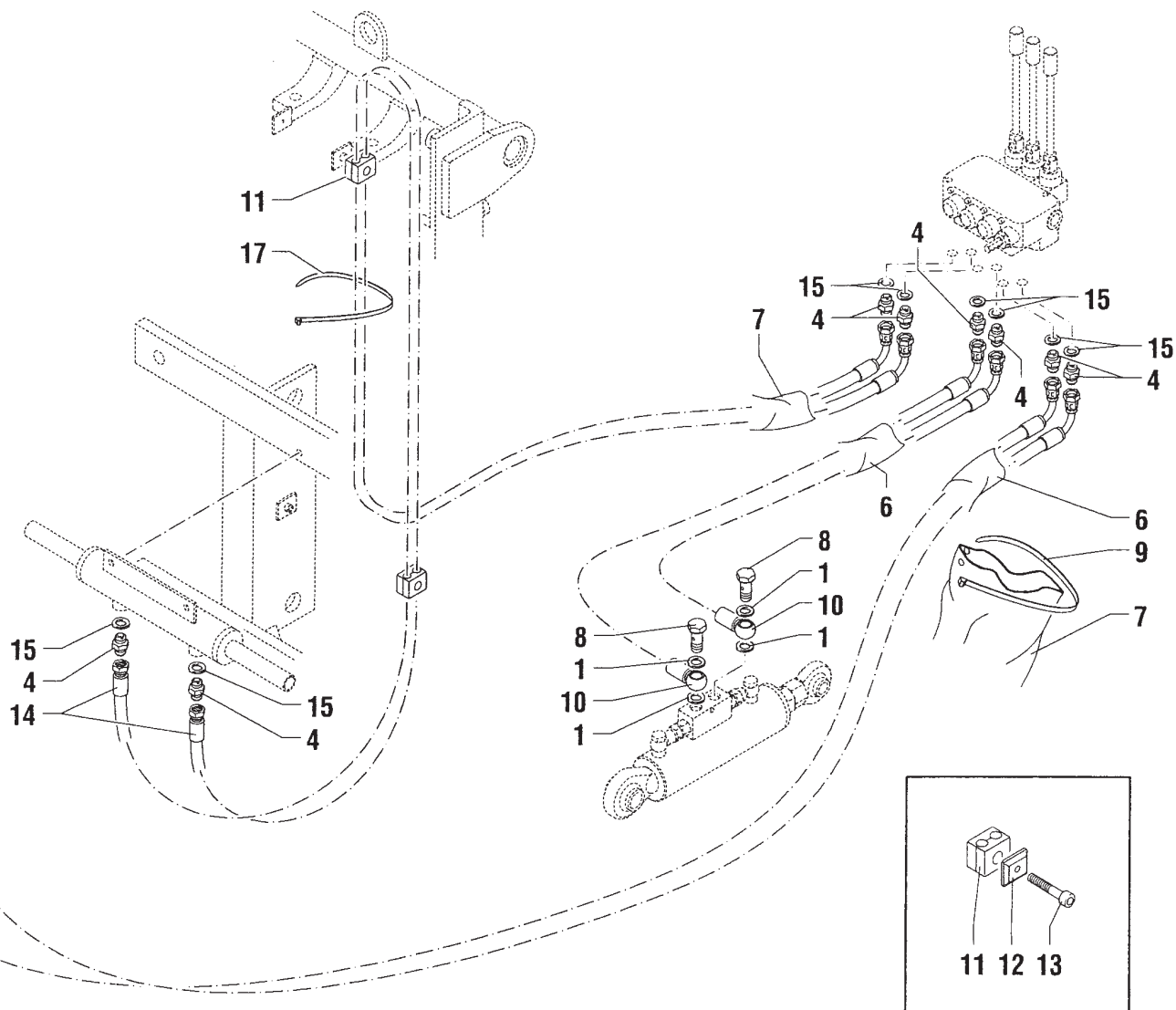
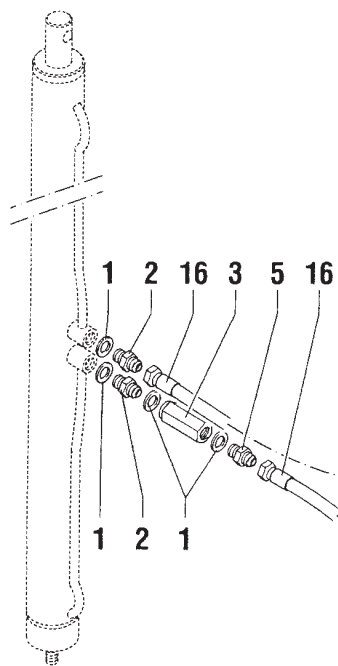
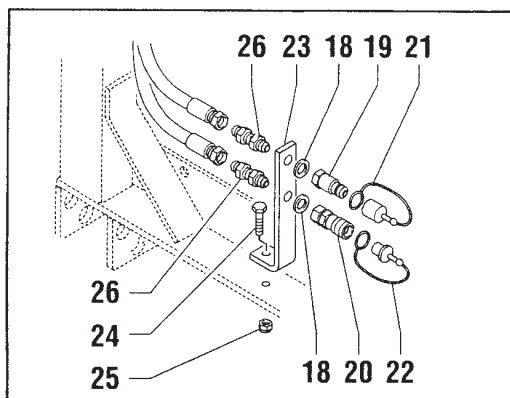


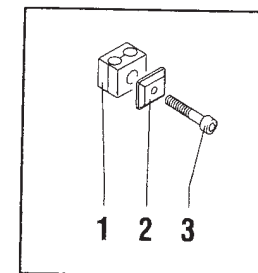
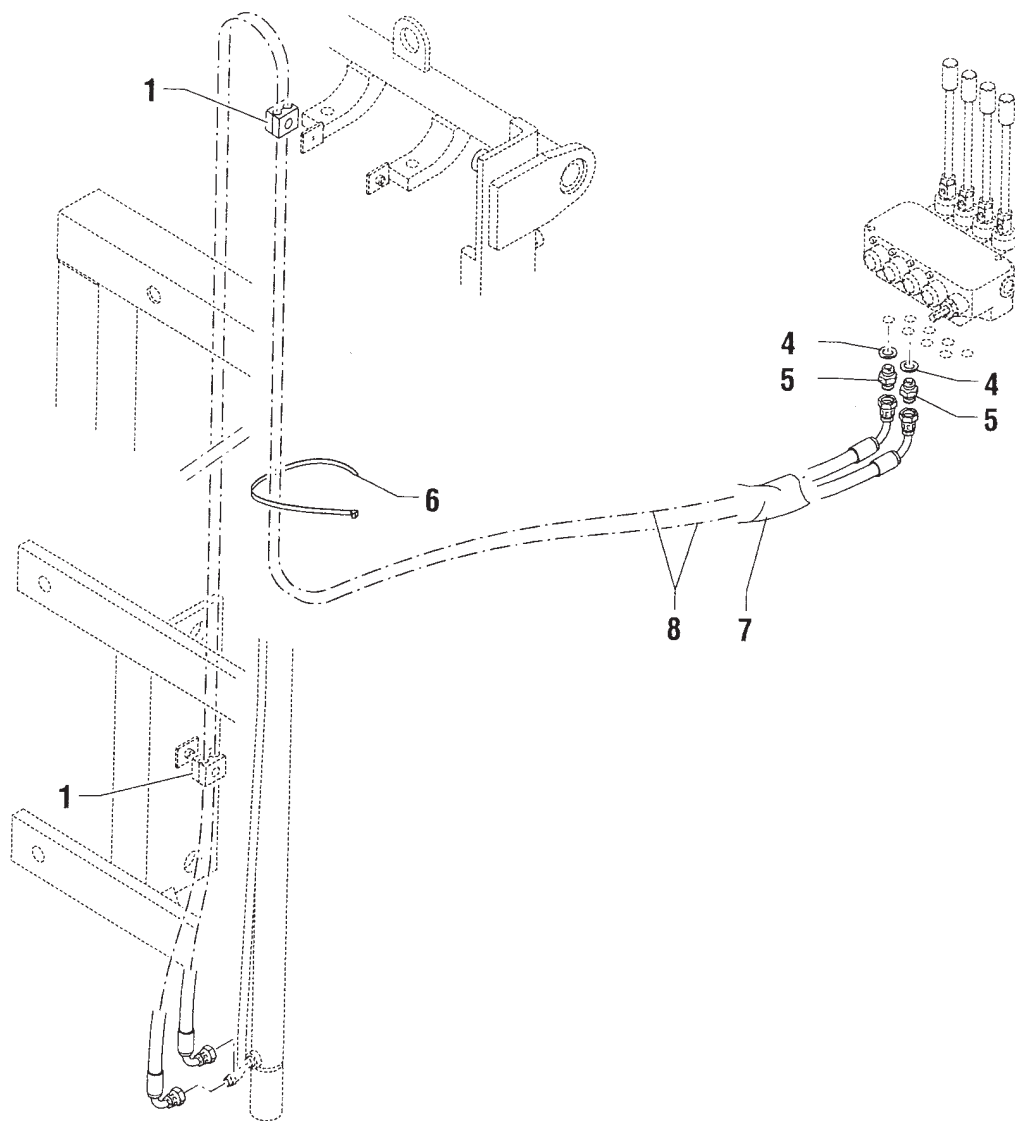


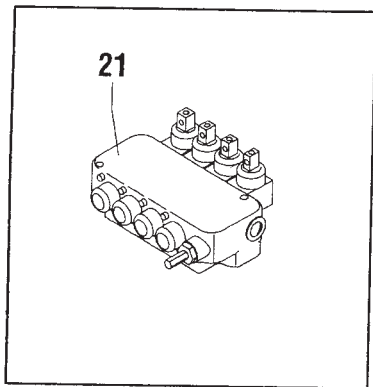
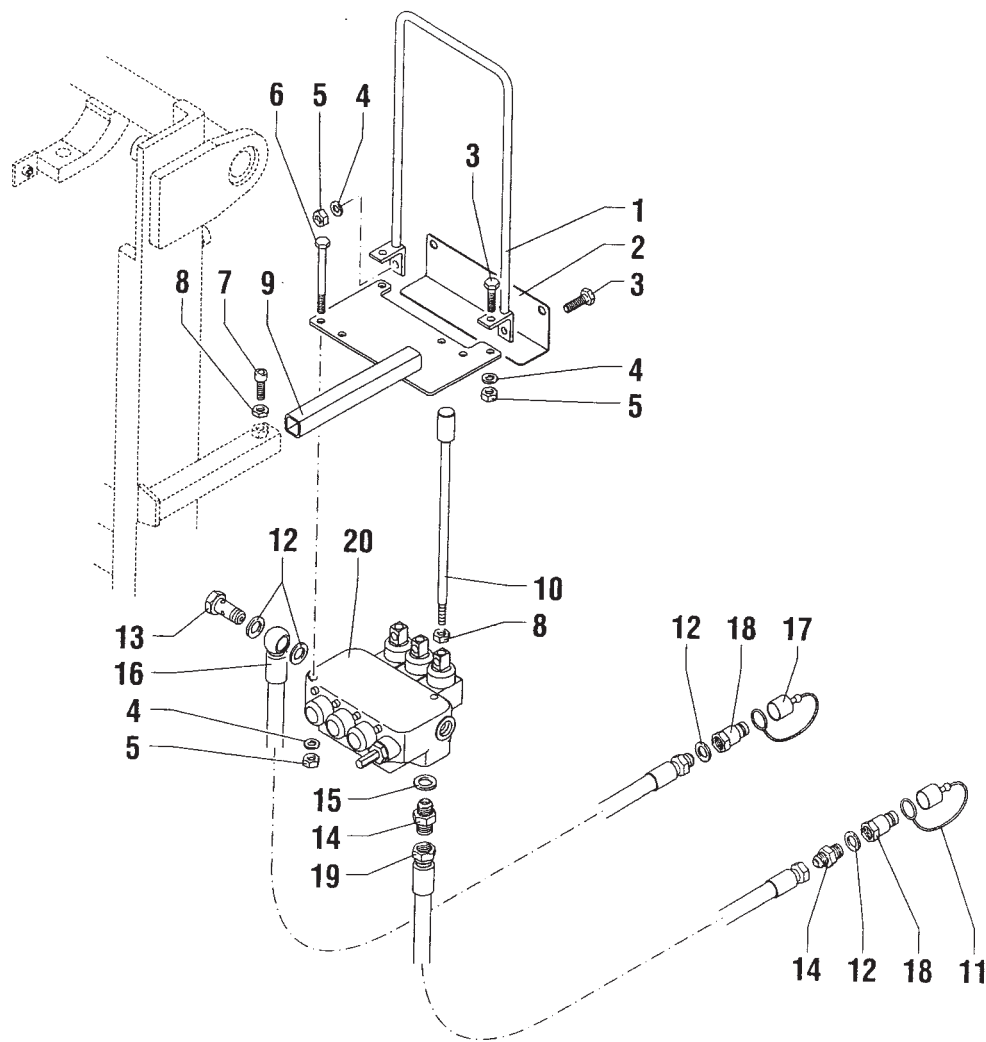
MURATORI MC 20

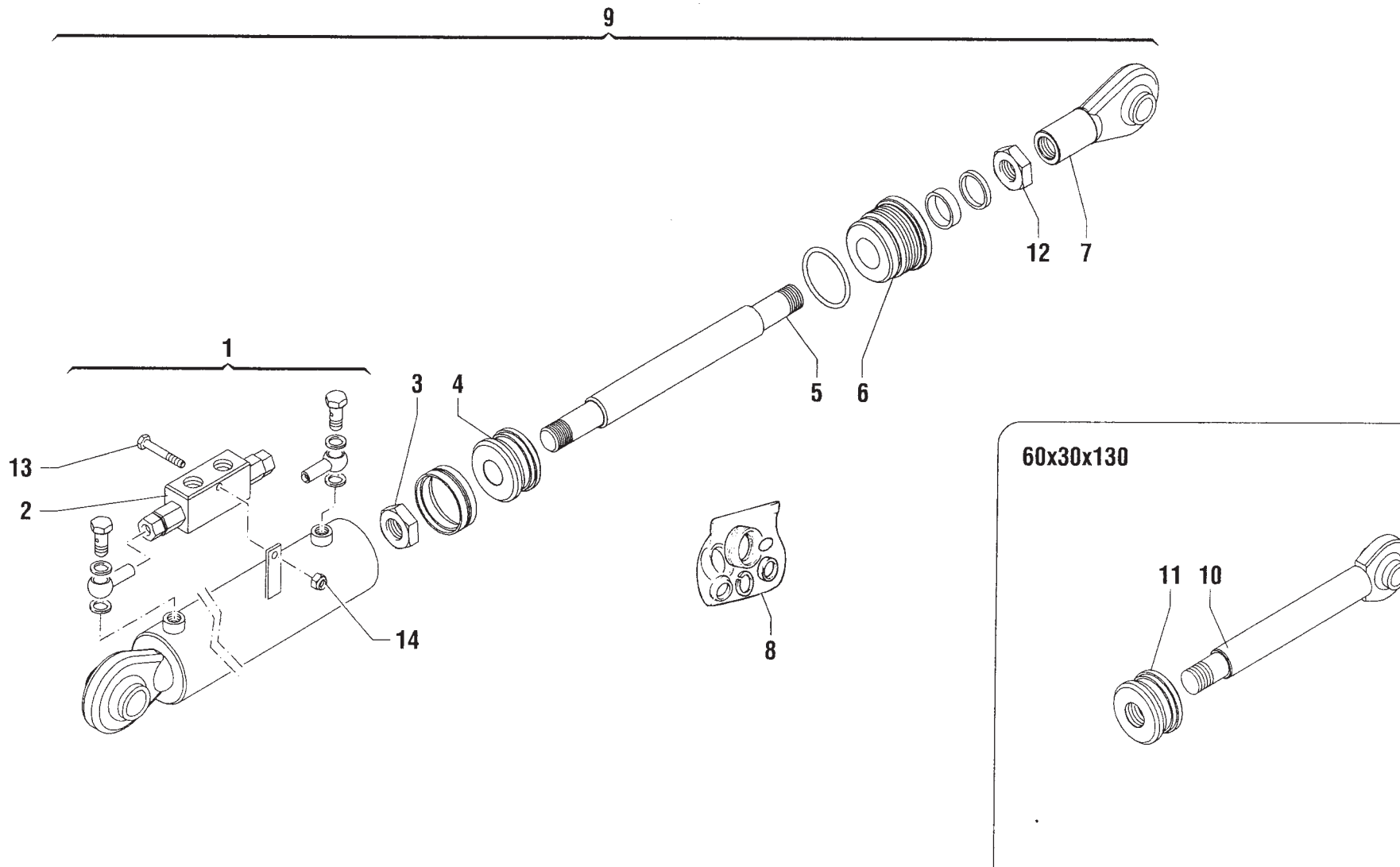
TAV. 5.0

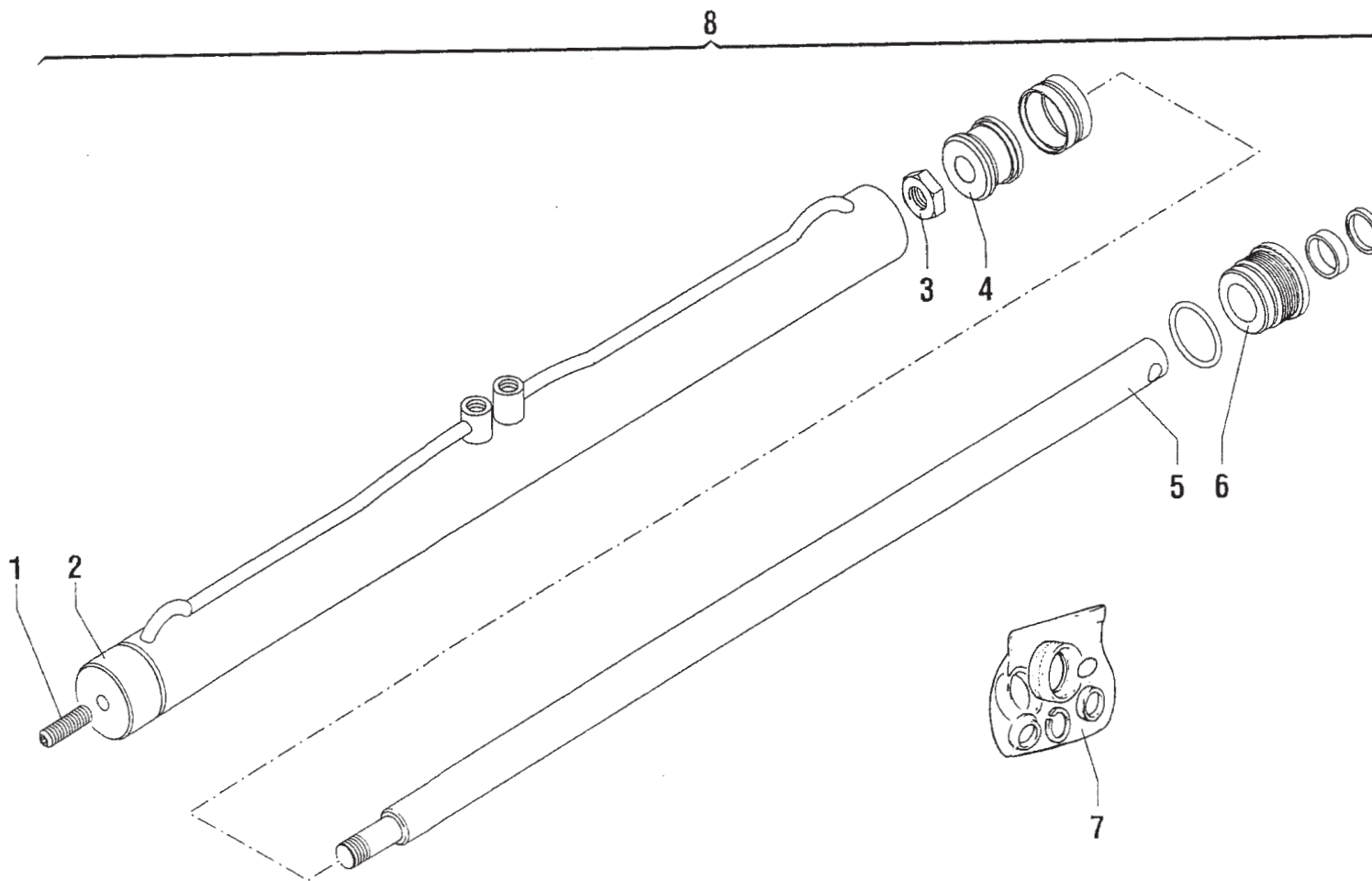
POS.	N° CODICE	Q.	DESCRIZIONE	DESIGNATION	BENENNUNG	DESCRIPTION	DESIGNAZIONE	Da matr.	Fino matr.
								De nr. serie Vom Seriennr. From serial nr.	Jusqu'au nr. serie Bis Seriennr. Up to serial nr.
1	61005600	8	RONDELLA	RONDELLE	SCHEIBE	WASHER	RAME		
2	68092100	2	RACCORDO	RACCORD	STUTZEN	CONNECTION			
3	68105100	1	VALVOLA UNIDIREZIONALE	SOUPAPE	VENTIL	VALVE			
4	68105200	8	RACCORDO	RACCORD	STUTZEN	CONNECTION			
5	68091900	1	RACCORDO	RACCORD	STUTZEN	CONNECTION			
6	68105300	2	GUAINA	GAINE	SCHUTZROHR	SHEATH	Ø 30		
7	68105400	2	GUAINA	GAINE	SCHUTZROHR	SHEATH	Ø 45		
8	60023700	2	VITE FORATA	VIS FOREE	DURCHBOHRTE SCHRAUBE	DRILLED SCREW			
9	68105500	1	FASCETTA	COLLIER	HALTEBAND	HOSE CLAMP			
10	68111300	2	TUBO FLESSIBILE	TUYAU FLEXIBLE	SCHLAUCH	HOSE			
11	68106000	2	FERMATUBO	ARRET TUBE	HALTERUNG ROHR	RETAINER PIPE			
12	68106100	2	PIASTRINA	PLAQUETTE	PLAETTCHEN	PLAQUE			
13	60043700	2	VITE	VIS	SCHRAUBE	SCREW			
14	68105700	2	TUBO FLESSIBILE	TUYAU FLEXIBLE	SCHLAUCH	HOSE	220		
14	68105800	2	TUBO FLESSIBILE	TUYAU FLEXIBLE	SCHLAUCH	HOSE	270		
14	68109900	2	TUBO FLESSIBILE	TUYAU FLEXIBLE	SCHLAUCH	HOSE	320		
15	61007100	8	RONDELLA	RONDELLE	SCHEIBE	WASHER	RAME		
16	68110300	2	TUBO FLESSIBILE	TUYAU FLEXIBLE	SCHLAUCH	HOSE			
17	68105500	1	FASCETTA	COLLIER	HALTEBAND	HOSE CLAMP			
18	61007100	2	RONDELLA	RONDELLE	SCHEIBE	WASHER	RAME		
19	68110500	1	ATTACCO RAPIDO	ATTELAGE RAPIDE	SCHNELLKUPPLUNG	QUICKLINKAGE			
20	68110600	1	ATTACCO RAPIDO	ATTELAGE RAPIDE	SCHNELLKUPPLUNG	QUICKLINKAGE			
21	68110700	1	TAPPO	BOUCHON	STOPFEN	PLUG			
22	68110800	1	TAPPO	BOUCHON	STOPFEN	PLUG			
23	30204200	1	STAFFA	BRIDE	BUEGEL	BRACKET			
24	60021300	1	VITE	VIS	SCHRAUBE	SCREW	M 10x30		

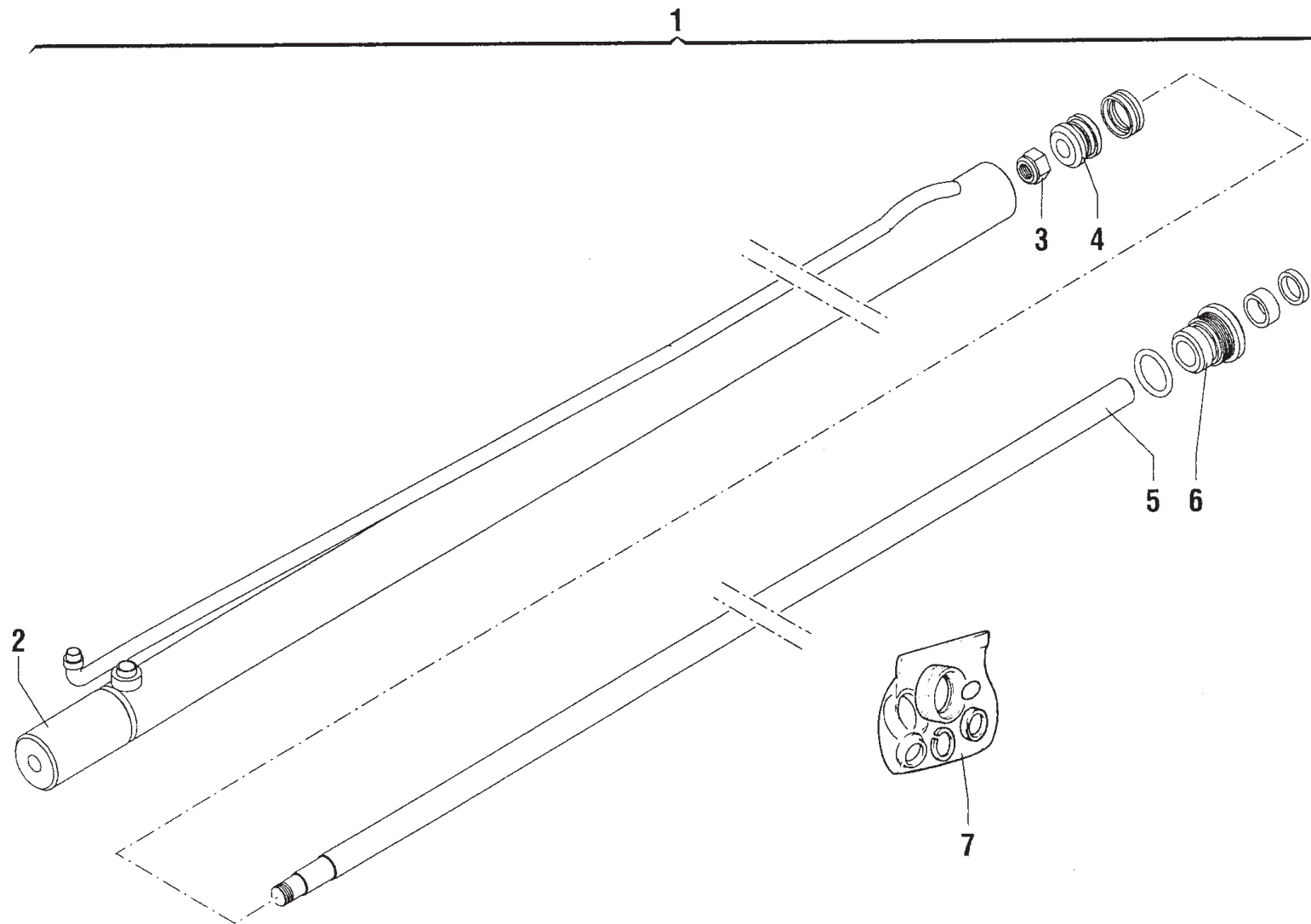


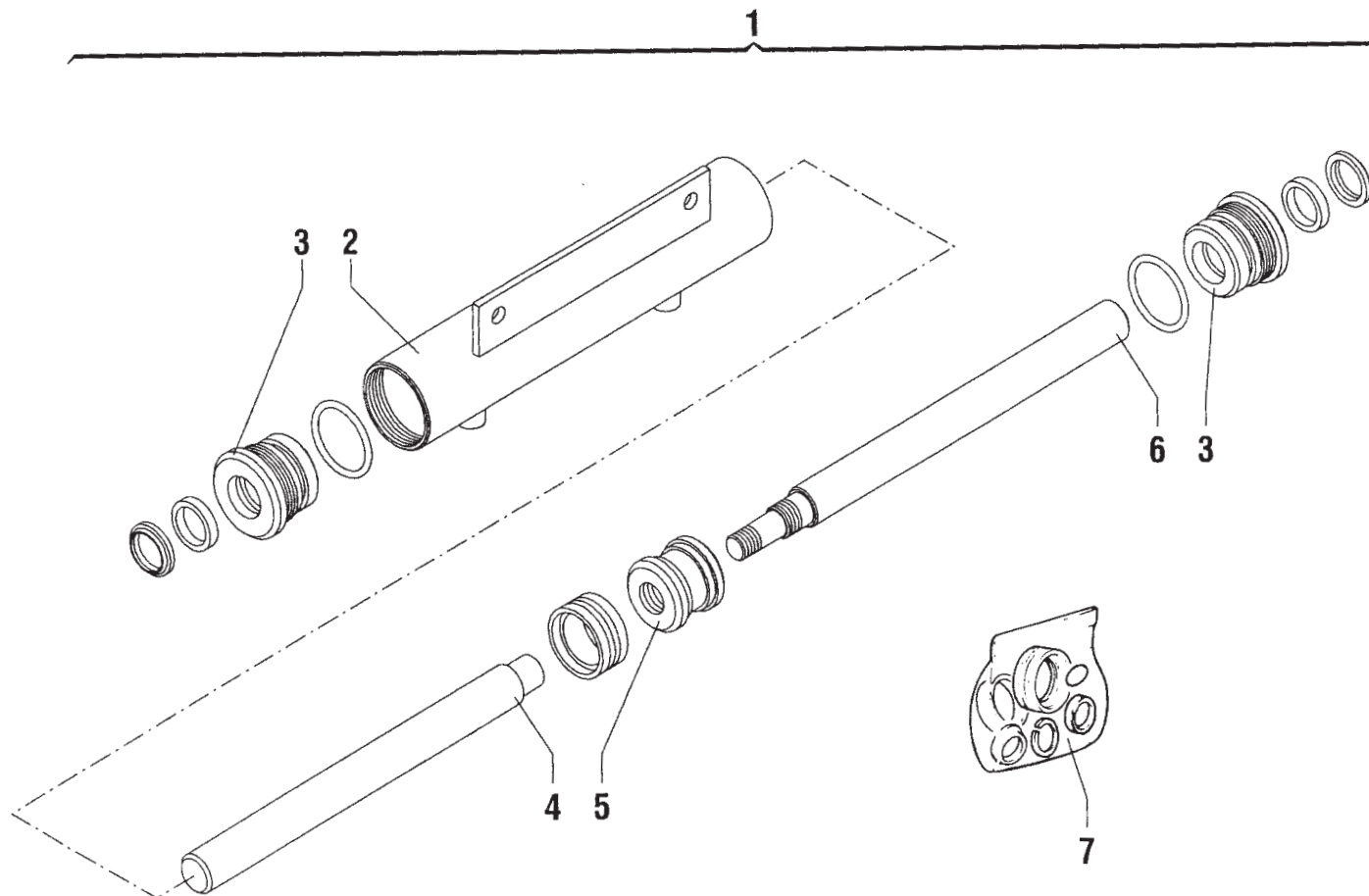












ZAPPATRICI - ERPICI ROTANTI - TRINCIATRICI

MURATORIM 

41051 CASTELNUOVO RANGONE (MODENA) Italy
Via Pavarello, 21 - 21/A-B-C -P.O.Box 45
Tel. ++39 059 535919 - Telefax ++39 059 537259
<http://www.muratoriequip.it>
e-mail: info@muratoriequip.it