

MURATORINI

TIPO-TYPE-TYP

MSC - MSCR

MSCK

CATALOGO RICAMBI

Catalogue Pièces Detachées

Ersatzteilkatalog

Spare Parts Catalogue

Catálogo Recambios

EDIZIONE 02/2002

Per ordinare parti di ricambio specificare:

- tipo e matricola della macchina (apposti sulla macchina o sui documenti di acquisto);
- numero del riferimento del pezzo nel disegno (Pos.), numero della tavola (Tav.) e numero di codice

N.B.: le indicazioni destro o sinistro vengono date guardando la macchina da dietro.

Pour les commandes de pièces de rechange veuillez spécifier:

- *type et numéro de série de la machine (indiqués sur la machine et sur le bon d'achat);*
- *numéro de référence du pièce sur le plan (Pos.), numéro du plan (Tav.) et numéro de code (codice)*

N.B.: *les indications droite ou gauche sont données en regardant la machine par derrière.*

Zum Bestellen von Ersatzteilen folgendes angeben:

- *Typ und Serien-Nr. der Maschine (zu finden auf der Maschine oder der Einkaufspapieren);*
- *Bezug-Nr. des Ersatzteils auf der Zeichnung (Pos.), Zeichnungsnummer (Tav.) und Kodenummer (codice)*

N.B.: *Die Angaben rechts und links verstehen sich so, dass man hinter der Maschine steht.*

When ordering spare parts specify:

- machine type and serial number (found on the machine or on the purchasing documents);
- reference number of the part on the relative drawing (Pos.), number of the drawing (Tav.) and part number (codice)

N.B.: right-hand or left-hand indications are made by viewing the machine from the rear.

TAV. 1.0

GRUPPO TELAIO
ENSEMBLE CHASSIS
SATZ FÜR RAHMEN
KIT FOR FRAME

TAV. 2.0

GRUPPO TELAIO VERSIONE RULLO POSTERIORE
ENSEMBLE CHASSIS VERSION ROULEAU ARRIERE
HINTERE WALZE VERSION SATZ FÜR RAHMEN
REAR ROLLER VERSION KIT FOR FRAME

TAV. 3.0

GRUPPO RULLO ROTORE A 6 ZAPPE
ENSEMBLE ROTOR A 6 LAMES
SATZ FÜR ROTOR ZU 6 MESSER
KIT FOR ROTOR 6 BLADES

TAV. 4.0

GRUPPO RULLO ROTORE VERSIONE "K"
ENSEMBLE ROTOR VERSION "K"
"K" VERSION SATZ FÜR ROTOR
"K" VERSION KIT FOR ROTOR

TAV. 4.1

GRUPPO RULLO ROTORE VERSIONE "SPIKE"
ENSEMBLE ROTOR VERSION "SPIKE"
"SPIKE" VERSION SATZ FÜR ROTOR
"SPIKE" VERSION KIT FOR ROTOR

TAV. 5.0

GRUPPO RIDUTTORE A 1 VELOCITA'
ENSEMBLE BOITIER MONOVITESSE
SATZ FÜR EINGANGGETRIEBE
KIT FOR ONE-SPEED GEAR BOX

TAV. 6.0

GRUPPO RIDUTTORE A 4 VELOCITA' (180-205)
ENSEMBLE BOITIER 4 VITESSES (180-205)
SATZ FÜR 4-GANGGETRIEBE (180-205)
KIT FOR 4-SPEED GEAR BOX (180-205)

TAV. 7.0

GRUPPO RIDUTTORE A 4 VELOCITA' (230-305)
ENSEMBLE BOITIER 4 VITESSES (230-305)
SATZ FÜR 4-GANGGETRIEBE (230-305)
KIT FOR 4-SPEED GEAR BOX (230-305)

TAV. 8.0

GRUPPO RULLO POSTERIORE
ENSEMBLE ROULEAU ARRIERE
SATZ HINTERE WALZE
KIT REAR ROLLER

TAV. 8.1

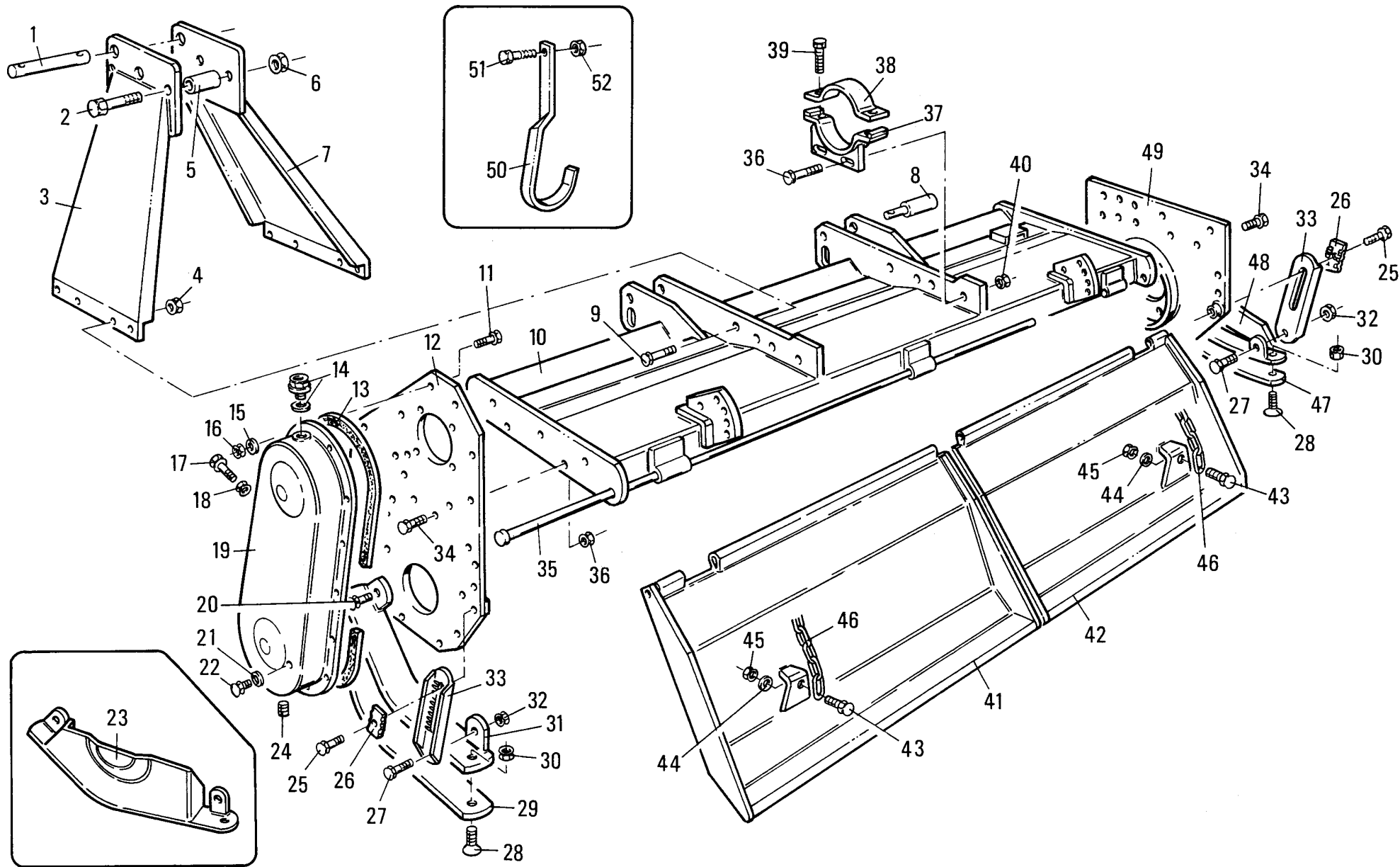
GRUPPO RULLO POSTERIORE
ENSEMBLE ROULEAU ARRIERE
SATZ HINTERE WALZE
KIT REAR ROLLER

TAV. 9.0

PROTEZIONI ANTINFORTUNISTICHE "CE"
PROTECTIONS "CE"
UNFALLSCHUTZVORRICHTUNGEN "CE"
SAFETY GUARDS "CE"

TAV. 10.0

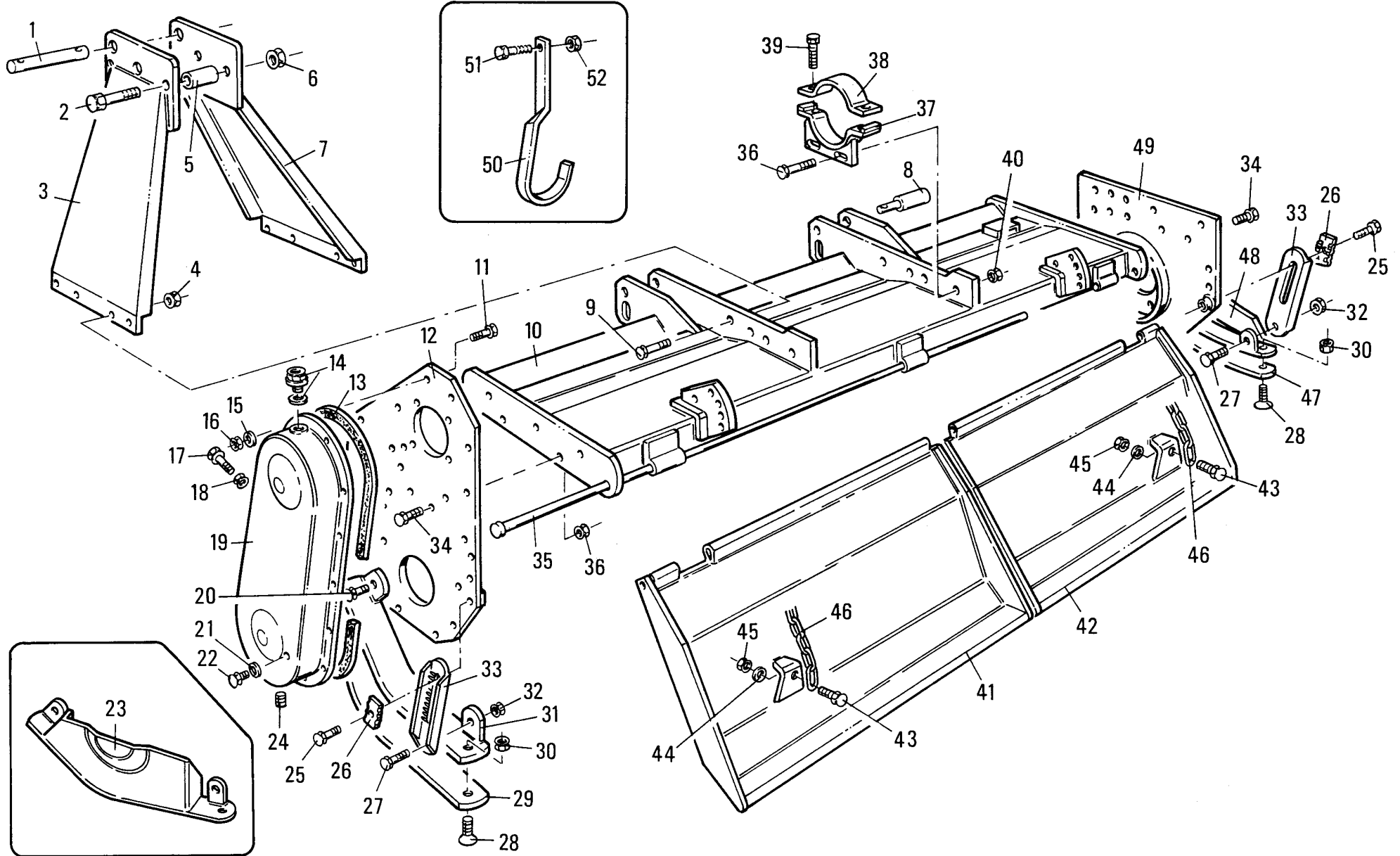
ATTACCO POSTERIORE IDRAULICO
ATTELAGE ARR. HYDRAULIQUE
HINT. HYDRAULIASCHES HITCH
REAR HYDRAULIC HITCH



MURATORI MSC - MSCR - MSCK

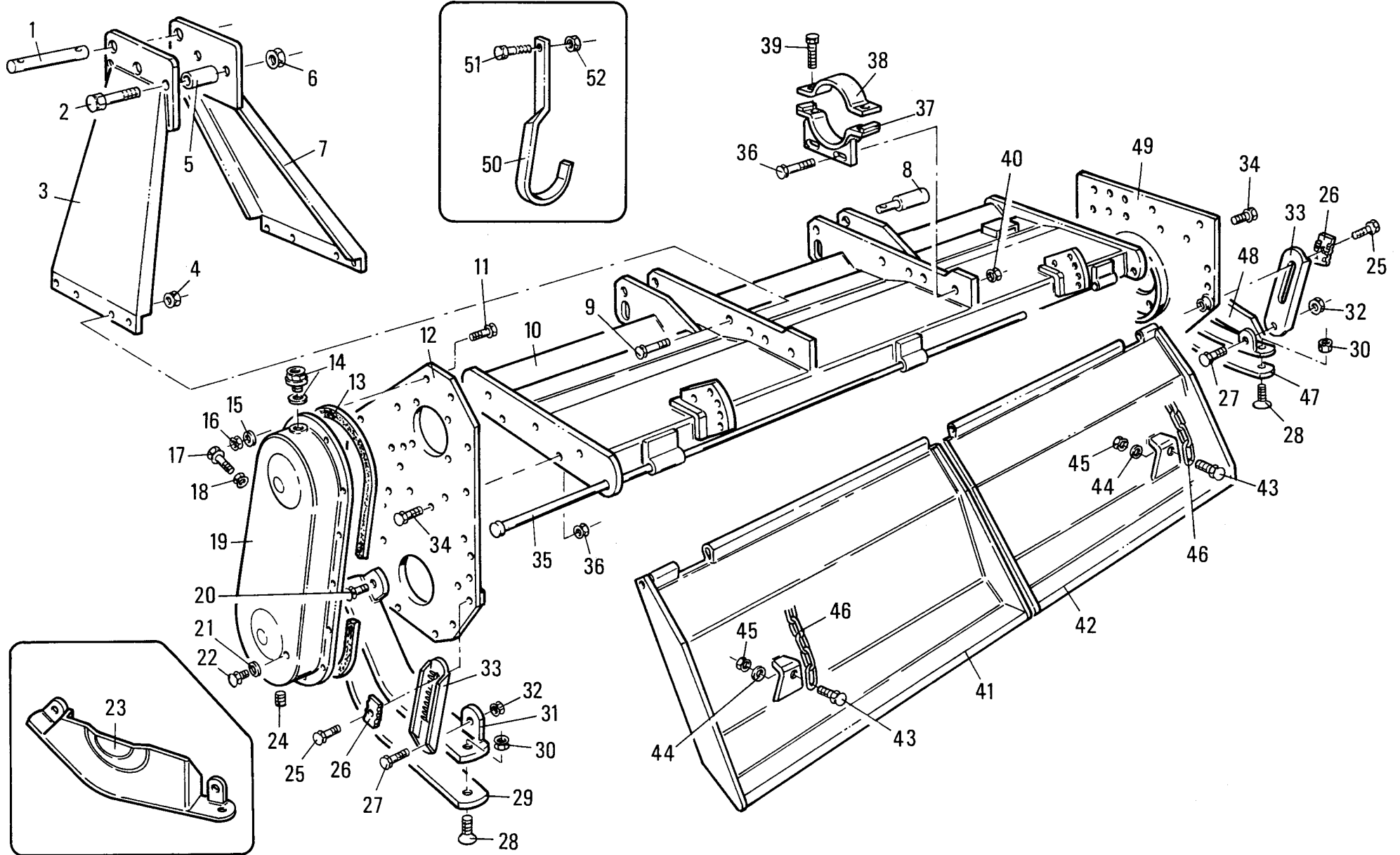
TAV. 1.0

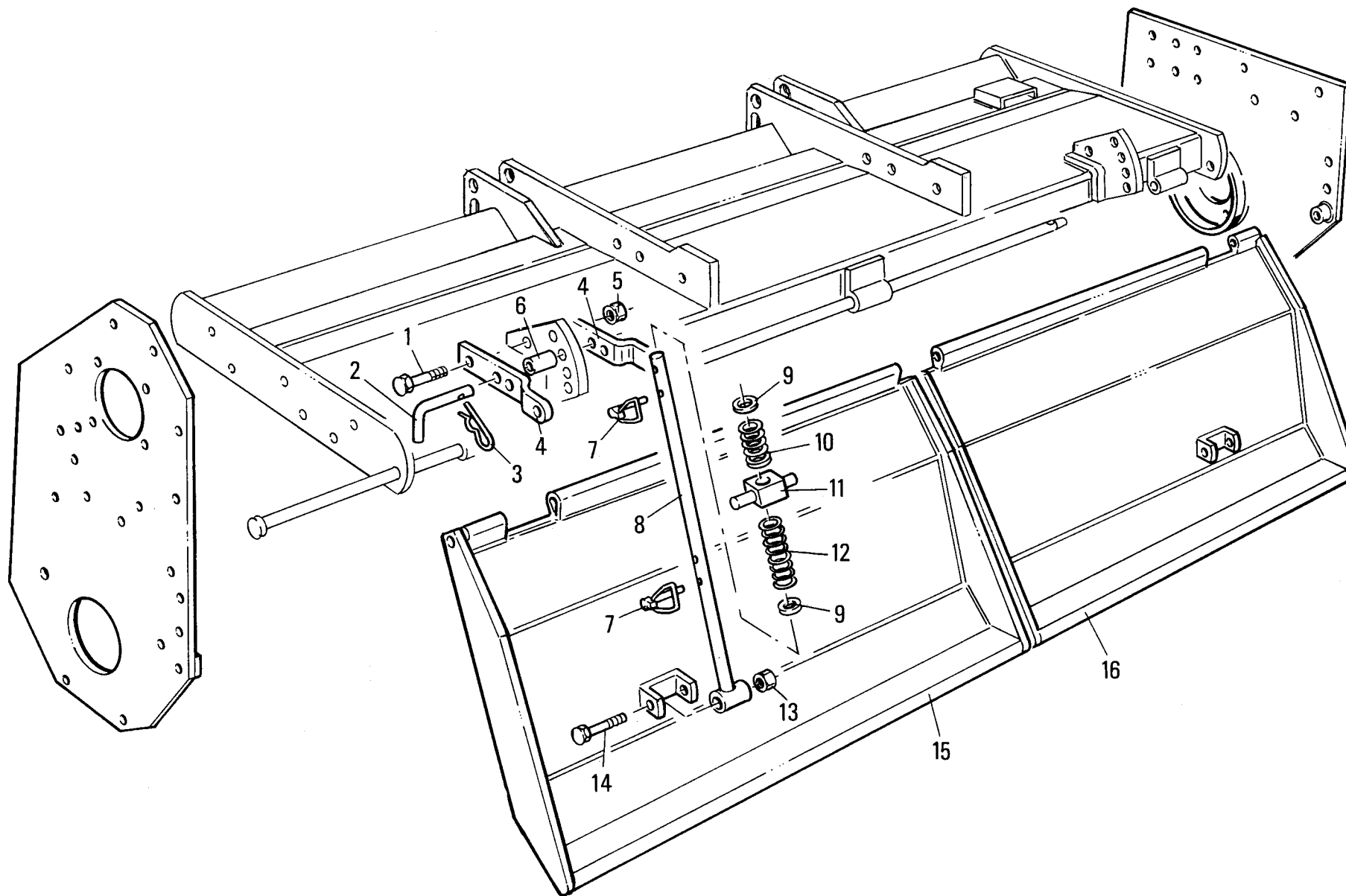
POS.	N°	CODICE	Q	DESCRIZIONE	DESIGNATION	BENENNUNG	DESCRIPTION	DESIGNAZIONE	Da matr.	Fino matr
									De nr. serie	Jusqu'au nr. serie
									Vom Seriennr.	Bis Seriennr.
									From serial nr.	Up to serial nr.
1	68062100	1		PERNO	PIVOT	BOLZEN	PIN			
2	60016800	2		VITE	VIS	SCHRAUBE	SCREW	TE 16 x 1,5 x 100 UNI 5738		
3	40101600	1		ARCATA SX	ARCADE (G)	ARKADE (LINKS)	ARCADE (LH)			
4	62010900	8		DADO	ECROU	MUTTER	NUT	M16 x 1,5 AUTOBLOCC.		
5	32048900	2		DISTANZIALE	ENTRETOISE	DISTANZSTUECK	SPACER			
6	62010900	2		DADO	ECROU	MUTTER	NUT	M16 x 1,5 AUTOBLOCC.		
7	40101500	1		ARCATA DX	ARCADE (D)	ARKADE (RECHTS)	ARCADE (RH)			
8	68062400	2		PERNO	PIVOT	BOLZEN	PIN			
9	60004800	8		VITE	VIS	SCHRAUBE	SCREW	TE 16 x 1,5 x 50 UNI 5738		
10	41068200	1		TELAIO	CHASSIS	RAHMEN	FRAME	180		
10	41068300	1		TELAIO	CHASSIS	RAHMEN	FRAME	205		
10	41068401	1		TELAIO	CHASSIS	RAHMEN	FRAME	230		
10	41068501	1		TELAIO	CHASSIS	RAHMEN	FRAME	255		
10	41068701	1		TELAIO	CHASSIS	RAHMEN	FRAME	305		
11	60000900	18		VITE	VIS	SCHRAUBE	SCREW	TE 8 x 20 UNI 5739		
12	40057601	1		PIASTRA CARTER	PLAQUE	SEITENWAND	SIDE FRAME	155 - 205		30224
12	40109300	1		PIASTRA CARTER	PLAQUE	SEITENWAND	SIDE FRAME	155 - 205	30225	
12	40085800	1		PIASTRA CARTER	PLAQUE	SEITENWAND	SIDE FRAME	230 - 305		30224
12	40109400	1		PIASTRA CARTER	PLAQUE	SEITENWAND	SIDE FRAME	230 - 305	30225	
13	80012900	1		GUARNIZIONE	GARNITURE	DICHTUNG	SEAL			
14	68000500	1		TAPPO	BOUCHON	STOPFEN	PLUG			
15	61000600	22		RONDELLA	RONDELLE	SCHEIBE	WASHER	DENT. Ø8 UNI 3704		
16	62000700	22		DADO	ECROU	MUTTER	NUT	M8 x 1,25 UNI 5587		
17	60022900	1		VITE	VIS	SCHRAUBE	SCREW	TE 16 x 100 UNI 5739		
18	62000900	1		DADO	ECROU	MUTTER	NUT	M16 x 2 UNI 5587		
19	40049100	1		COPERCHIO	COUVERCLE	DECKEL	COVER			



MURATORI MSC - MSCR - MSCK
TAV. 1.0

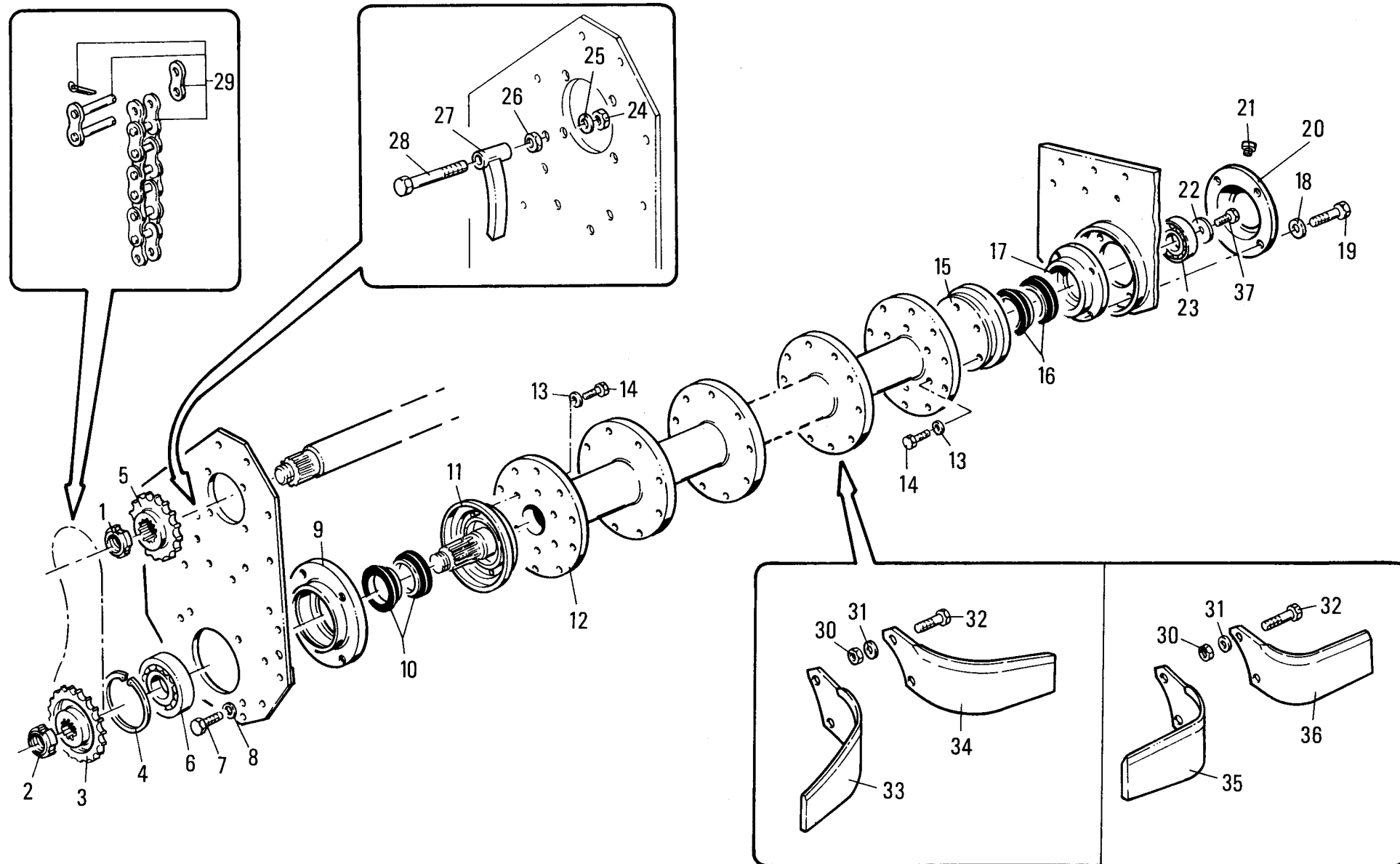
POS.	N° CODICE	Q	DESCRIZIONE	DESIGNATION	BENENNUNG	DESCRIPTION	DESIGNAZIONE	Da matr.	Fino matr
								De nr. serie Vom Seriennr. From serial nr.	Jusqu'au nr. serie Bis Seriennr. Up to serial nr.
20	60000300	2	VITE	VIS	SCHRAUBE	SCREW	TE 14 x 40 UNI 5739		
21	61000800	1	RONDELLA	RONDELLE	SCHEIBE	WASHER	PIANA Ø10 ALLUMINIO		
22	60001100	1	VITE	VIS	SCHRAUBE	SCREW	TE 10 x 10 UNI 5739		
23	45066400	1	SLITTA SX "KU"	PATIN (G)	STUTZTKUFE (LINKS)	SKID (LH)			
24	68052600	1	TAPPO	BOUCHON	STOPFEN	PLUG			
25	60003400	2	VITE	VIS	SCHRAUBE	SCREW	TE 14 x 45 UNI 5737		
26	39143100	2	QUADRETTO REG.PROF.	CARRE REGOLATION	TIEFEINSTELLUNGSPLATT	DEPHT CONTROL PLATE			
27	60017500	2	VITE	VIS	SCHRAUBE	SCREW	TE 14 x 1,5 x 35 UNI 5740		
28	60003300	4	VITE	VIS	SCHRAUBE	SCREW	TS 12 x 35 UNI 5933		
29	30048300	1	PATTINO SX	PATIN GAUCHE	GLEITBLOCK Klappe	PAD LEFT			
30	62000600	4	DADO	ECROU	MUTTER	NUT	M12 x 1,75 UNI 5587		
31	40057500	1	SLITTA SX	PATIN (G)	STUTZTKUFE (LINKS)	SKID (LH)			
32	62010700	2	DADO	ECROU	MUTTER	NUT	M14 x 1,5 AUTOBLOCC.		
33	39143000	2	BIELLA	BIELLE	PLEUELSTANGE	LINK			
34	60000300	16	VITE	VIS	SCHRAUBE	SCREW	TE 14 x 40 UNI 5739		
35	40058800	1	ASTA	TIGE	STANGE	ROD	180		
35	40058900	1	ASTA	TIGE	STANGE	ROD	205		
35	40059000	1	ASTA	TIGE	STANGE	ROD	230		
35	40059100	1	ASTA	TIGE	STANGE	ROD	255		
35	40059300	1	ASTA	TIGE	STANGE	ROD	305		
36	62010800	16	DADO	ECROU	MUTTER	NUT	M14 x 2 AUTOBLOCC.		
37	40057301	2	SOSTEGNO	SUPPORT	TRAEGER	SUPPORT			
38	30047801	2	FASCETTA	COLLIER	HALTEBAND	HOSE CLAMP			
39	60007100	8	VITE	VIS	SCHRAUBE	SCREW	TE 14 x 50 UNI 5737		
40	62010800	8	DADO	ECROU	MUTTER	NUT	M14 x 2 AUTOBLOCC.		
41	41042800	1	COFANO SX	CAPOT (G)	SCHUTZHAUBE (LINKS)	HOOD (LH)	MSC 180		





MURATORI MSCR - MSCK
TAV. 2.0

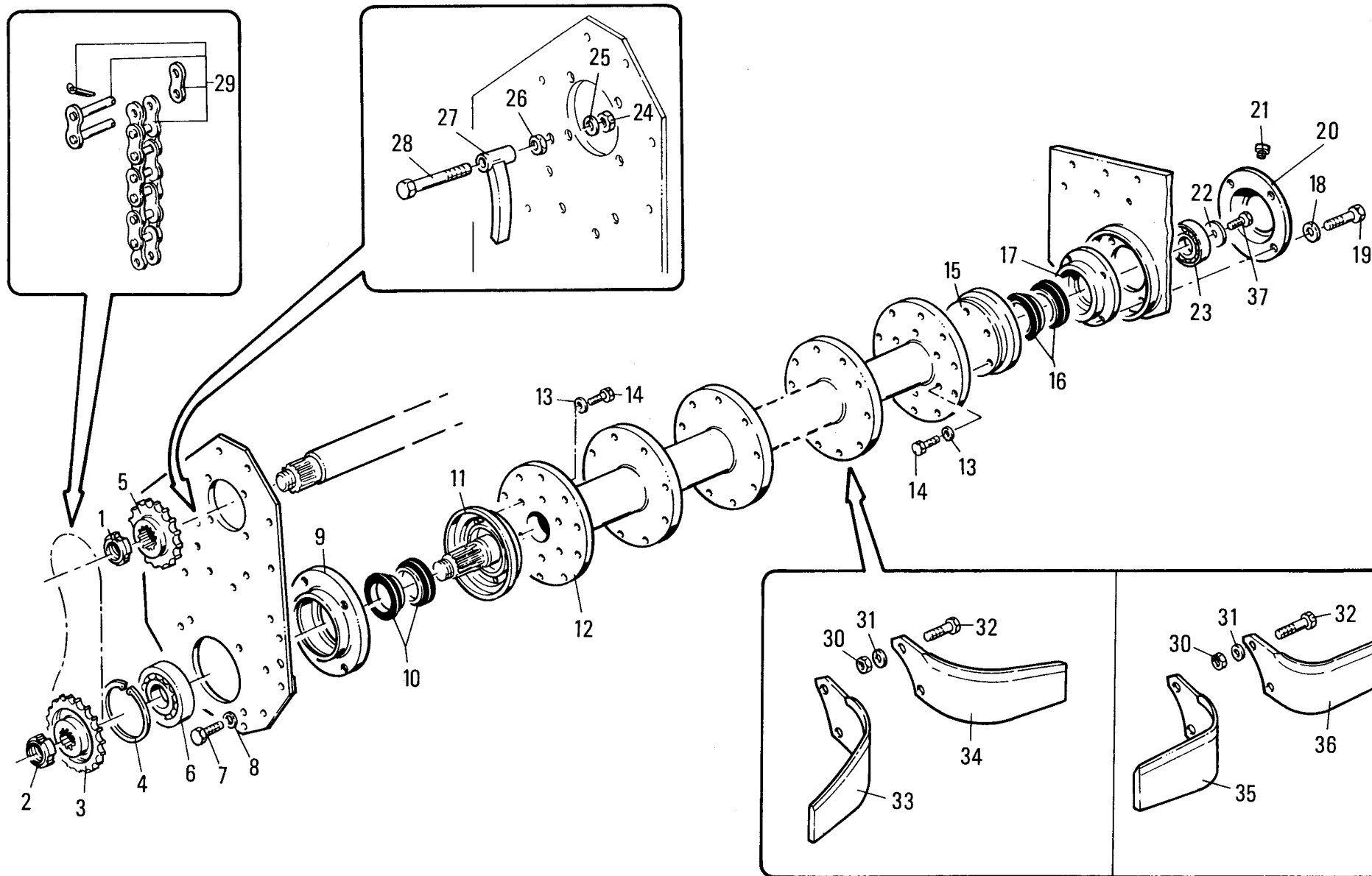
POS.	N°	CODICE	Q	DESCRIZIONE	DESIGNATION	BENENNUNG	DESCRIPTION	DESIGNAZIONE	Da matr.	Fino matr
									De nr. serie	Jusqu'au nr. serie
									Vom Seriennr.	Bis Seriennr.
									From serial nr.	Up to serial nr.
1	60020900	4	VITE	VIS	SCHRAUBE	SCREW	TE 12 x 45 UNI 5737			
2	31022600	2	PERNO	PIVOT	BOLZEN	PIN				
3	64000900	2	COPIGLIA	COUPILLE	SPLINT	COTTER PIN	AR Ø3			
4	30038601	4	BRACCIO	BRAS	ARM	ARM				
5	62010600	4	DADO	ECROU	MUTTER	NUT	M 12 x 1,75 AUTOBLOCC.			
6	32065900	2	DISTANZIALE	ENTRETOISE	DISTANZSTUECK	SPACER				
7	64002500	4	SPINA	GOUPILLE	STIFT	PIN	Ø 8			
8	40071900	2	ASTA	TIGE	STANGE	ROD				
9	61004300	4	RONDELLA	RONDELLE	SCHEIBE	WASHER	PIANA Ø22 UNI 6592			
10	68030900	2	MOLLA	RESSORT	FEDER	SPRING				
11	34015700	2	SNODO	ARTICULATION	GELENK	ARTICULATION				
12	68031000	2	MOLLA	RESSORT	FEDER	SPRING				
13	62010800	2	DADO	ECROU	MUTTER	NUT	M 14 x 2 AUTOBLOCC.			
14	60011500	2	VITE	VIS	SCHRAUBE	SCREW	TE 14 x 80 UNI 5737			
15	41054801	1	COFANO SX	CAPOT (G)	SCHUTZHAUBE (LINKS)	HOOD (LH)	MSCR-MSCK 180			
15	41054901	1	COFANO SX	CAPOT (G)	SCHUTZHAUBE (LINKS)	HOOD (LH)	MSCR-MSCK 205			
15	41055002	1	COFANO SX	CAPOT (G)	SCHUTZHAUBE (LINKS)	HOOD (LH)	MSCR-MSCK 230			
15	41055102	1	COFANO SX	CAPOT (G)	SCHUTZHAUBE (LINKS)	HOOD (LH)	MSCR-MSCK 255			
15	41055302	1	COFANO SX	CAPOT (G)	SCHUTZHAUBE (LINKS)	HOOD (LH)	MSCR-MSCK 305			
16	41054101	1	COFANO DX	CAPOT (D)	SCHUTZHAUBE (RECHTS)	HOOD (RH)	MSCR-MSCK 180			
16	41054201	1	COFANO DX	CAPOT (D)	SCHUTZHAUBE (RECHTS)	HOOD (RH)	MSCR-MSCK 205			
16	41054302	1	COFANO DX	CAPOT (D)	SCHUTZHAUBE (RECHTS)	HOOD (RH)	MSCR-MSCK 230			
16	41054402	1	COFANO DX	CAPOT (D)	SCHUTZHAUBE (RECHTS)	HOOD (RH)	MSCR-MSCK 255			
16	41054602	1	COFANO DX	CAPOT (D)	SCHUTZHAUBE (RECHTS)	HOOD (RH)	MSCR-MSCK 305			



MURATORI MSC - MSCR

TAV. 3.0

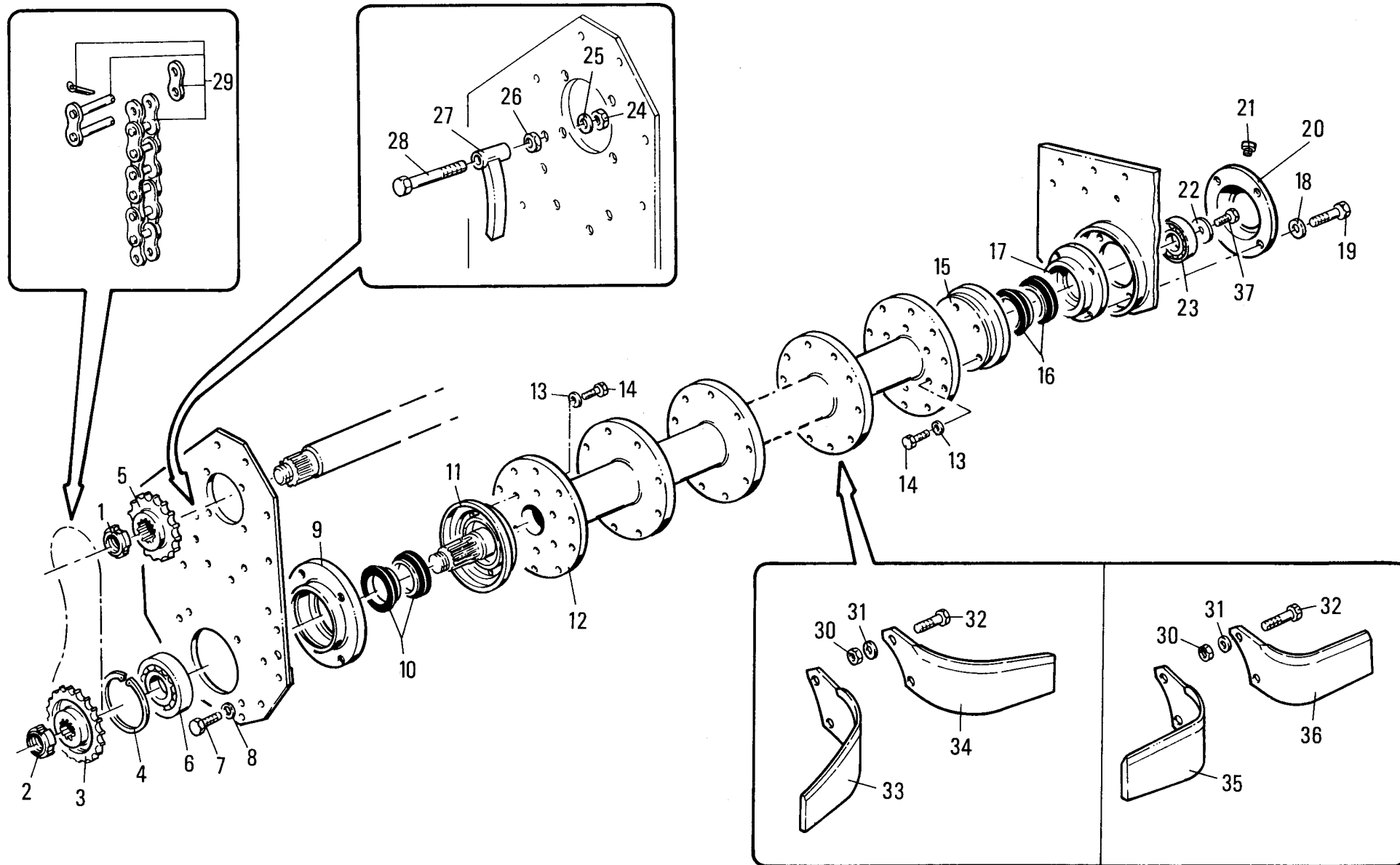
POS.	N° CODICE Q	DESCRIZIONE	DESIGNATION	BENENNUNG	DESCRIPTION	DESIGNAZIONE	Da matr. De nr. serie Vom Seriennr. From serial nr.	Fino matr Jusqu'au nr. serie Bis Seriennr. Up to serial nr.
I codici con asterisco sono stati utilizzati anche sulle seguenti matricole oltre a quello riportato in tabella:						30395 - 31128 - 31150 - 31192 - 31195 - 32034		
<i>Les codes avec etoile ont été aussi utilisés sur les numéros de série suivantes:</i>								
Koden mit sternchen wurden auch auf folgenden seriennummer benutzt:								
<i>Codes with (*) have been also utilized on following serial numbers:</i>								
1	63001300	1	ANELLO ELASTICO	ARRETOIR	SPANNRING	SNAP-RING	Ø 50 E UNI 7435 (MSC 180-205)	
1	62001900	2	GHIERA	FRETTE	NUTMUTTER	RING NUT	M 45 x 1,5 KM (MSC 230-305)	
1	62002000	2	ROSETTA	RONDELLE	UNTERLEGSSCHEIBE	WASHER	Ø 45 (MSC 230-305)	
2	62004700	1	GHIERA	FRETTE	NUTMUTTER	RING NUT	M 40 x 1,5 AUTOBLOCC. GUK	
3	10017800	1	PIGNONE	PIGNON	RITZEL	PINION	Z14 1" 3/4" (MSC 180-205)	
3	10023200	1	PIGNONE	PIGNON	RITZEL	PINION	Z13 1" 3/4" (MSC 230-305)	
4	63002800	1	ANELLO ELASTICO	ARRETOIR	SPANNRING	SNAP-RING	Ø110 I UNI 7437	
5	10017700	1	PIGNONE	PIGNON	RITZEL	PINION	Z10 1" 3/4" (MSC 180-205)	
5	10023100	1	PIGNONE	PIGNON	RITZEL	PINION	Z11 1" 3/4" (MSC 230-305)	
6	67009000	1	CUSCINETTO	ROULEMENT	LAGER	BEARING	22212	
7	* 60003600	4	VITE	VIS	SCHRAUBE	SCREW	TE 14 x 1,5 x 35 UNI 5738	30224
7	60025300	4	VITE	VIS	SCHRAUBE	SCREW	TE 14 x 1,5 x 30 UNI 5740	30225
8	61000100	4	RONDELLA	RONDELLE	SCHEIBE	WASHER	Ø 14 DENT. UNI 3704	
9	* 10018200	1	SUPPORTO SX	SUPPORT (G)	TRAEGER (LINKS)	SUPPORT (LH)		30224
9	10028300	1	SUPPORTO SX	SUPPORT (G)	TRAEGER (LINKS)	SUPPORT (LH)		30225
10	* 66001200	1	ANELLO TENUTA	JOINT D'ETANCHEITE	DICHTUNGSRING	JUNT RING	70 x 100 x 10	30224
10	68044900	1	GUARNIZIONE SX	GARNITURE (G)	DICHTUNG (LINKS)	SEAL (LH)		30225
11	* 40060100	1	MOZZO SX	MOYEU (G)	NABE (LINKS)	HUB (LH)		30224
11	40108900	1	MOZZO SX	MOYEU (G)	NABE (LINKS)	HUB (LH)		30225
12	* 42018100	1	ROTORE	ROTOR	ROTOR	ROTOR	180	30224
12	* 42018200	1	ROTORE	ROTOR	ROTOR	ROTOR	205	30224
12	* 42018400	1	ROTORE	ROTOR	ROTOR	ROTOR	255	30224

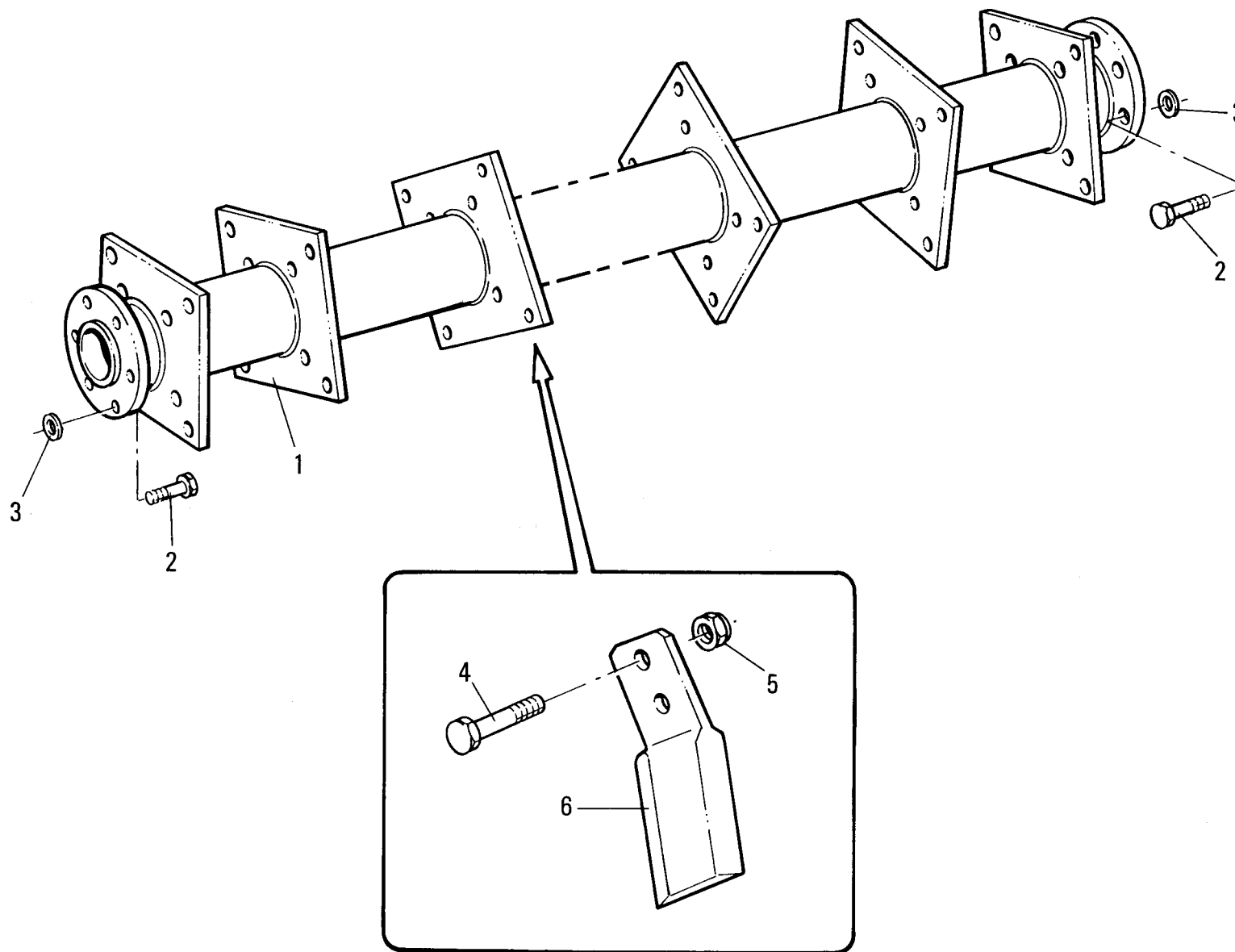


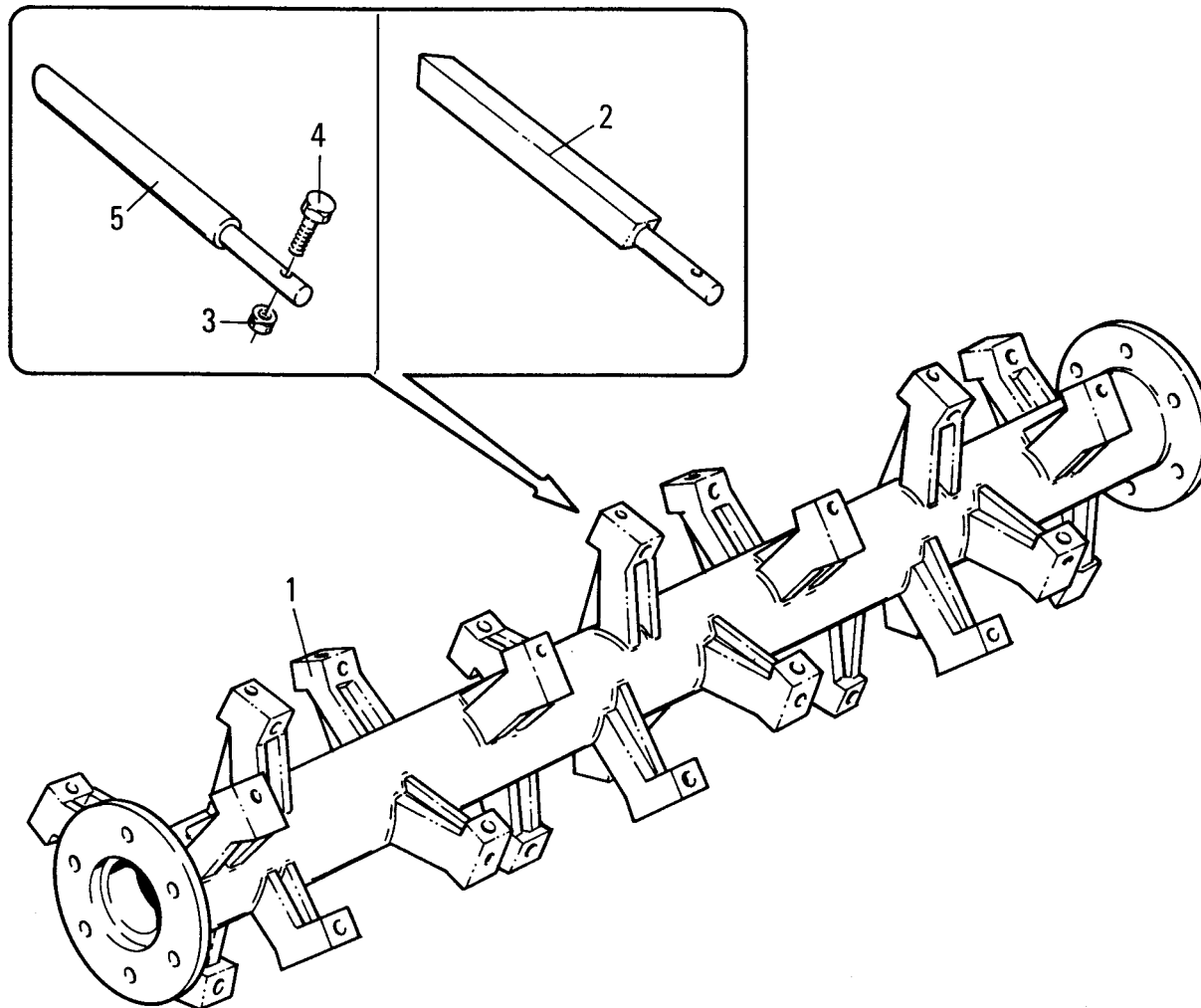
MURATORI MSC - MSCR

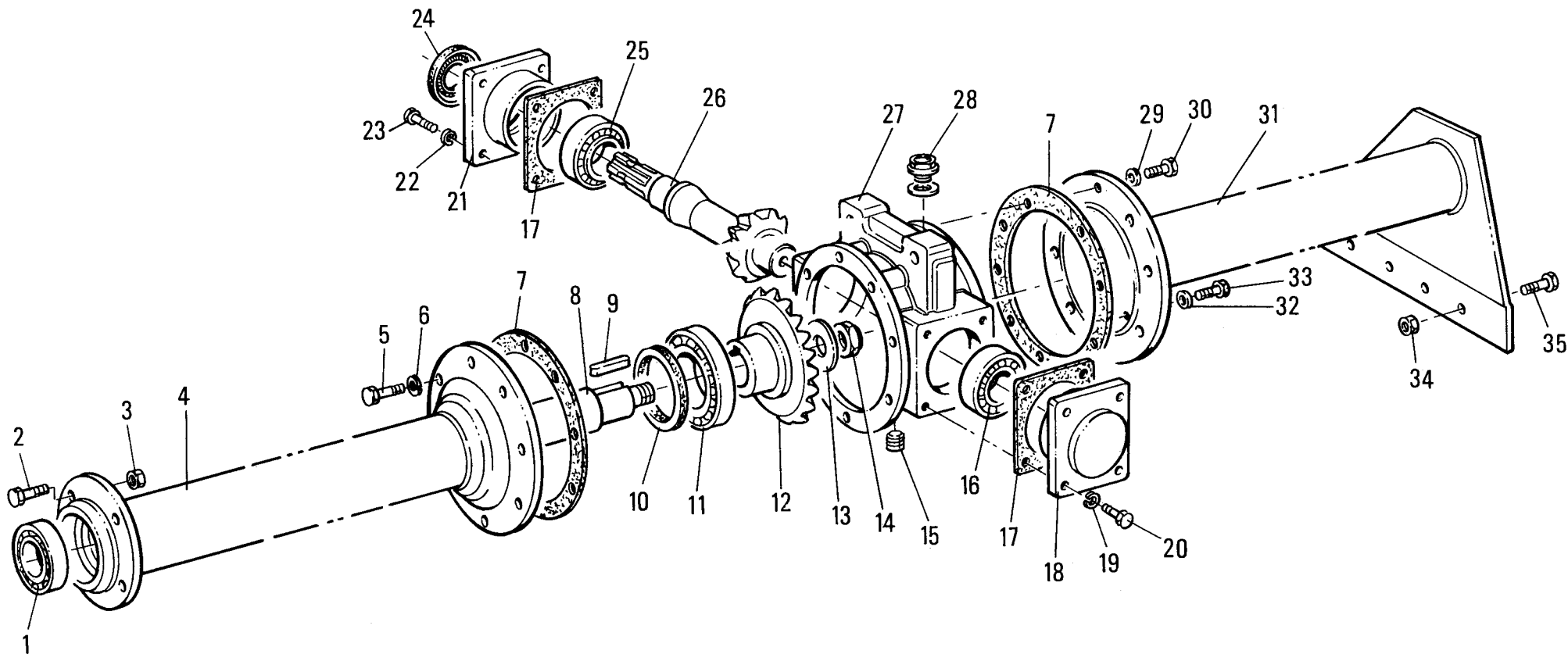
TAV. 3.0

POS.	N° CODICE Q	DESCRIZIONE	DESIGNATION	BENENNUNG	DESCRIPTION	DESIGNAZIONE	Da matr. De nr. serie Vom Seriennr. From serial nr.	Fino matr Jusqu'au nr. serie Bis Seriennr. Up to serial nr.		
I codici con asterisco sono stati utilizzati anche sulle seguenti matricole oltre a quello riportato in tabella:						30395 - 31128 - 31150 - 31192 - 31195 - 32034				
<i>Les codes avec etoile ont étés aussi utilises sur les numéros de série suivantes:</i>										
Koden mit sternchen wurden auch auf folgeden seriennummer benutzt:										
<i>Codes with (*) have been also utilized on following serial numbers:</i>										
12	*	42018600	1	ROTORE	ROTOR	ROTOR	ROTOR	305		30224
12		42036501	1	ROTORE	ROTOR	ROTOR	ROTOR	180	30225	
12		42036601	1	ROTORE	ROTOR	ROTOR	ROTOR	205	30225	
12		42036701	1	ROTORE	ROTOR	ROTOR	ROTOR	230	30225	
12		42036801	1	ROTORE	ROTOR	ROTOR	ROTOR	255	30225	
12		42037001	1	ROTORE	ROTOR	ROTOR	ROTOR	305	30225	
13		61000100	12	RONDELLA	RONDELLE	SCHEIBE	WASHER	Ø14 DENT. UNI 3704		
14	*	60003100	12	VITE	VIS	SCHRAUBE	SCREW	TE 14 x 30 UNI 5739		30224
14		60017500	12	VITE	VIS	SCHRAUBE	SCREW	TE 14 x 1,5 x 35 UNI 5740	30225	
15	*	40060200	1	MOZZO DX	MOYEU (D)	NABE (RECHTS)	HUB (RH)			30224
15		40109000	1	MOZZO DX	MOYEU (D)	NABE (RECHTS)	HUB (RH)		30225	
16	*	66001200	1	ANELLO TENUTA	JOINT D'ETANCHEITE	DICHTUNGSRING	JUNT RING	70 x 100 x 10		30224
16		68044900	1	GUARNIZIONE DX	GARNITURE (D)	DICHTUNG (RECHTS)	SEAL (RH)		30225	
17	*	10018300	1	SUPPORTO DX	SUPPORT (D)	TRAEGER (RECHTS)	SUPPORT (RH)			30224
17		10028200	1	SUPPORTO DX	SUPPORT (D)	TRAEGER (RECHTS)	SUPPORT (RH)		30225	
18		61000100	4	RONDELLA	RONDELLE	SCHEIBE	WASHER	Ø14 DENT. UNI 3704		
19	*	60007200	4	VITE	VIS	SCHRAUBE	SCREW	TE 14 x 1,5 x 45 UNI 5738		30224
19		60022700	4	VITE	VIS	SCHRAUBE	SCREW	TE 14 x 1,5 xC 40 UNI 5740	30225	
20	*	40081300	1	COPERCHIO DX	COUVERCLE (D)	DECKEL (RECHTS)	COVER (RH)			30224
20		10028900	1	COPERCHIO DX	COUVERCLE (D)	DECKEL (RECHTS)	COVER (RH)		30225	
21	*	64000200	1	INGRASSATORE	GRAISSEUR	SCHMIERNIPPEL	GREASE FITTING	M6 x 1 DIRITTO		30224
21		68053400	1	TAPPO	BOUCHON	STOPFEN	PLUG			



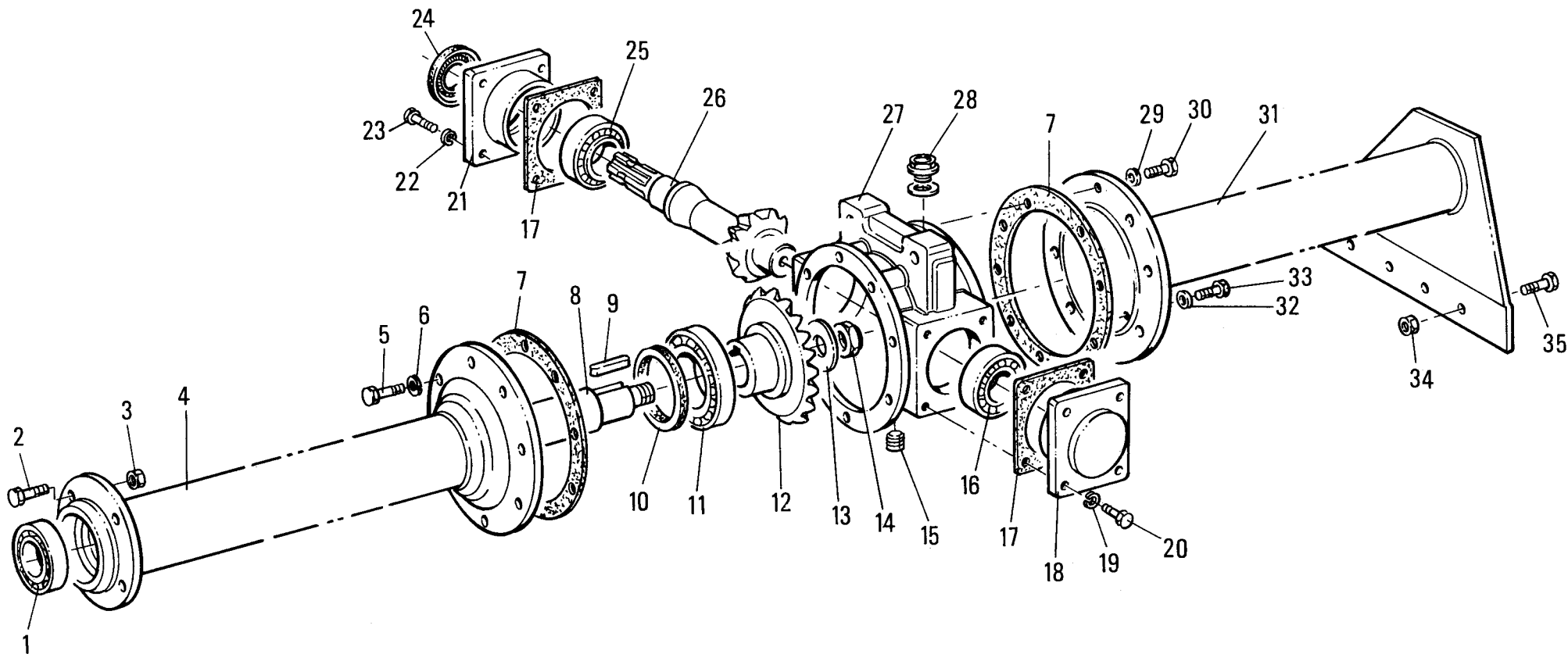


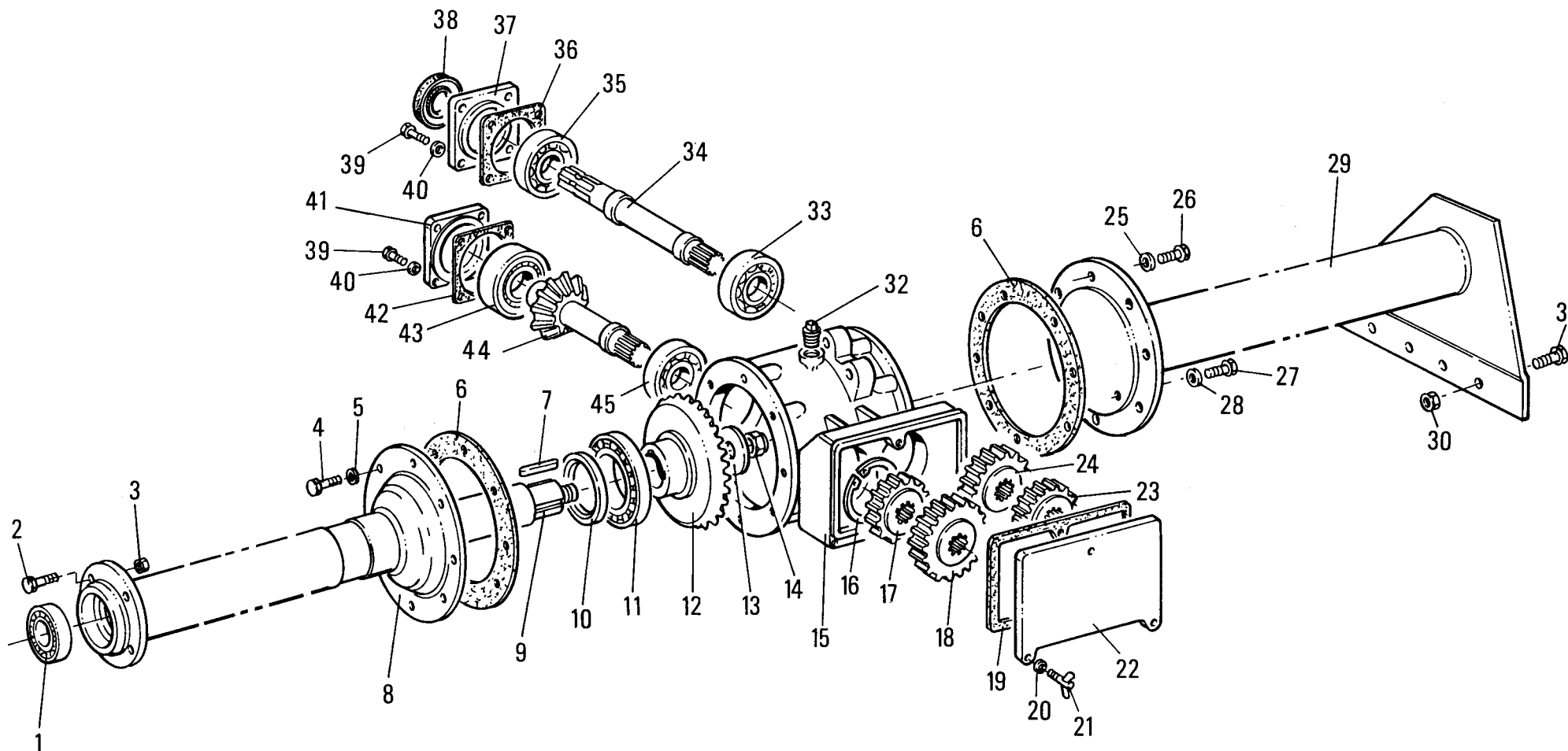




MURATORI MSC - MSCK
TAV. 5.0

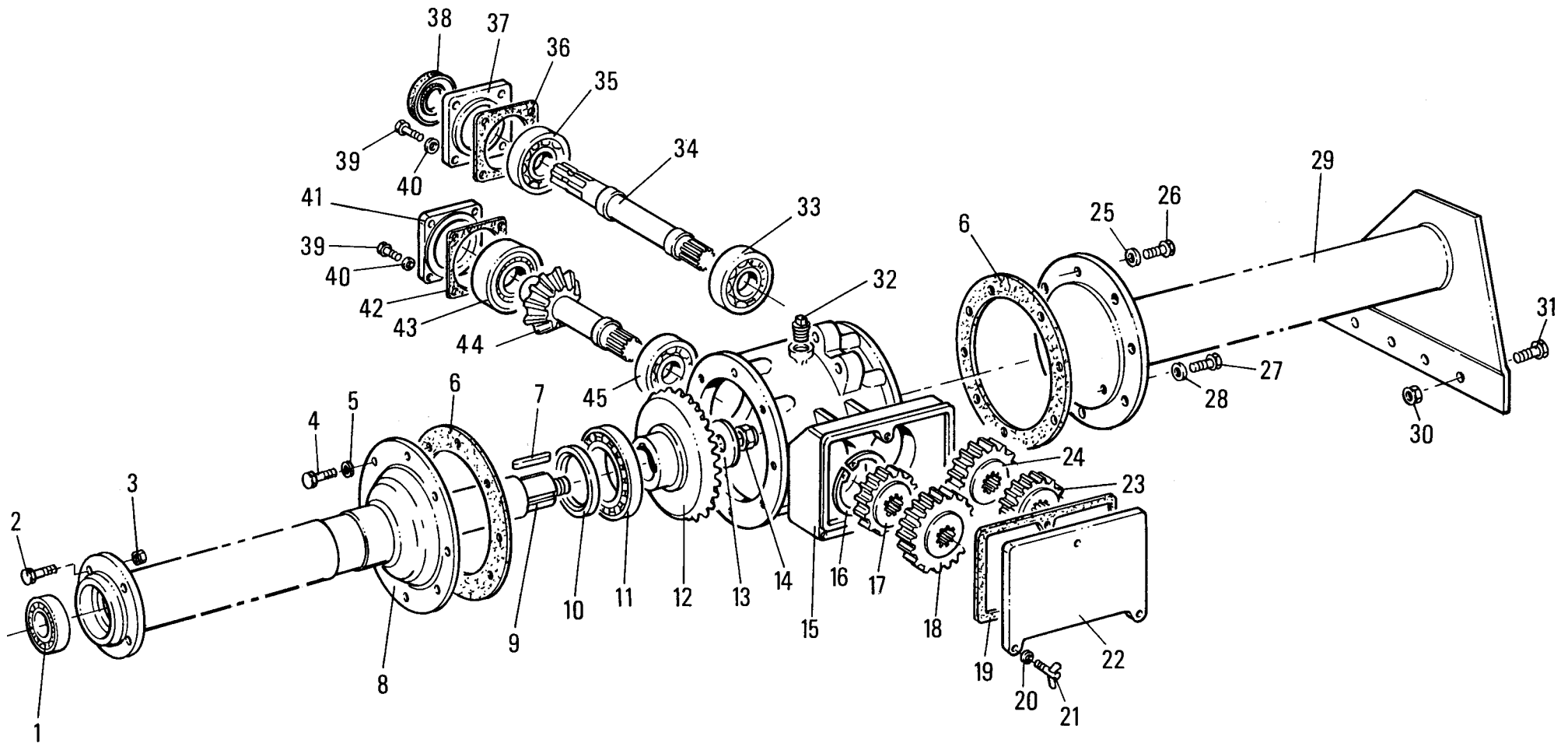
POS.	N°	CODICE	Q	DESCRIZIONE	DESIGNATION	BENENNUNG	DESCRIPTION	DESIGNAZIONE	Da matr.	Fino matr
									De nr. serie	Jusqu'au nr. serie
									Vom Seriennr.	Bis Seriennr.
									From serial nr.	Up to serial nr.
1	67002300	1		CUSCINETTO	ROULEMENT	LAGER	BEARING	6311		
2	60000300	4		VITE	VIS	SCHRAUBE	SCREW	TE 14 x 40 UNI 5739		
3	62010800	4		DADO	ECROU	MUTTER	NUT	M14 x 2 AUTOBLOCC.		
4	40058000	1		CANOTTO	TUBE	ROHR	TUBE	180		
4	40058100	1		CANOTTO	TUBE	ROHR	TUBE	205		
4	40058300	1		CANOTTO	TUBE	ROHR	TUBE	230		
4	40058400	1		CANOTTO	TUBE	ROHR	TUBE	255		
5	60000500	8		VITE	VIS	SCHRAUBE	SCREW			
6	61000500	8		RONDELLA	RONDELLE	SCHEIBE	WASHER	DENT. Ø 12 UNI 3704		
7	80000900			GUARNIZIONE	GARNITURE	DICHTUNG	SEAL			
8	31026000	1		SEMIASSE	DEMI-ESSIEU	ACHSWELLE	AXLE SHAFT	180		
8	31026100	1		SEMIASSE	DEMI-ESSIEU	ACHSWELLE	AXLE SHAFT	205		
8	31026300	1		SEMIASSE	DEMI-ESSIEU	ACHSWELLE	AXLE SHAFT	230		
8	31026400	1		SEMIASSE	DEMI-ESSIEU	ACHSWELLE	AXLE SHAFT	255		
9	65000300	2		LINGUETTA	CLAVETTE	KEIL	KEY	12 x 8 x 60		
10	66000900	1		ANELLO TENUTA	JOINT D'ETANCHEITE	DICHTUNGSRING	JUNT RING	80 x 100 x 10		
11	67002200	1		CUSCINETTO	ROULEMENT	LAGER	BEARING	6216		
12	10002200	1		CORONA	COURONNE	KRANZ	CROWN			
13	39001000	1		RONDELLA	RONDELLE	SCHEIBE	WASHER	PIANA Øe 70 Øi 25		
14	62011700	1		DADO	ECROU	MUTTER	NUT	M24 x 2 H=18 AUTOBLOCC.		
15	68002500	1		TAPPO	BOUCHON	STOPFEN	PLUG	3/8"		
16	67007600	1		CUSCINETTO	ROULEMENT	LAGER	BEARING	32309		
17	80001000			GUARNIZIONE	GARNITURE	DICHTUNG	SEAL			
18	01001900	1		FLANGIA	BRIDE	FLANSCH	FLANGE			
19	61000100	4		RONDELLA	RONDELLE	SCHEIBE	WASHER	DENT. Ø 14 UNI 3704		
20	60003100	4		VITE	VIS	SCHRAUBE	SCREW	TE 14 x 30 UNI 5739		

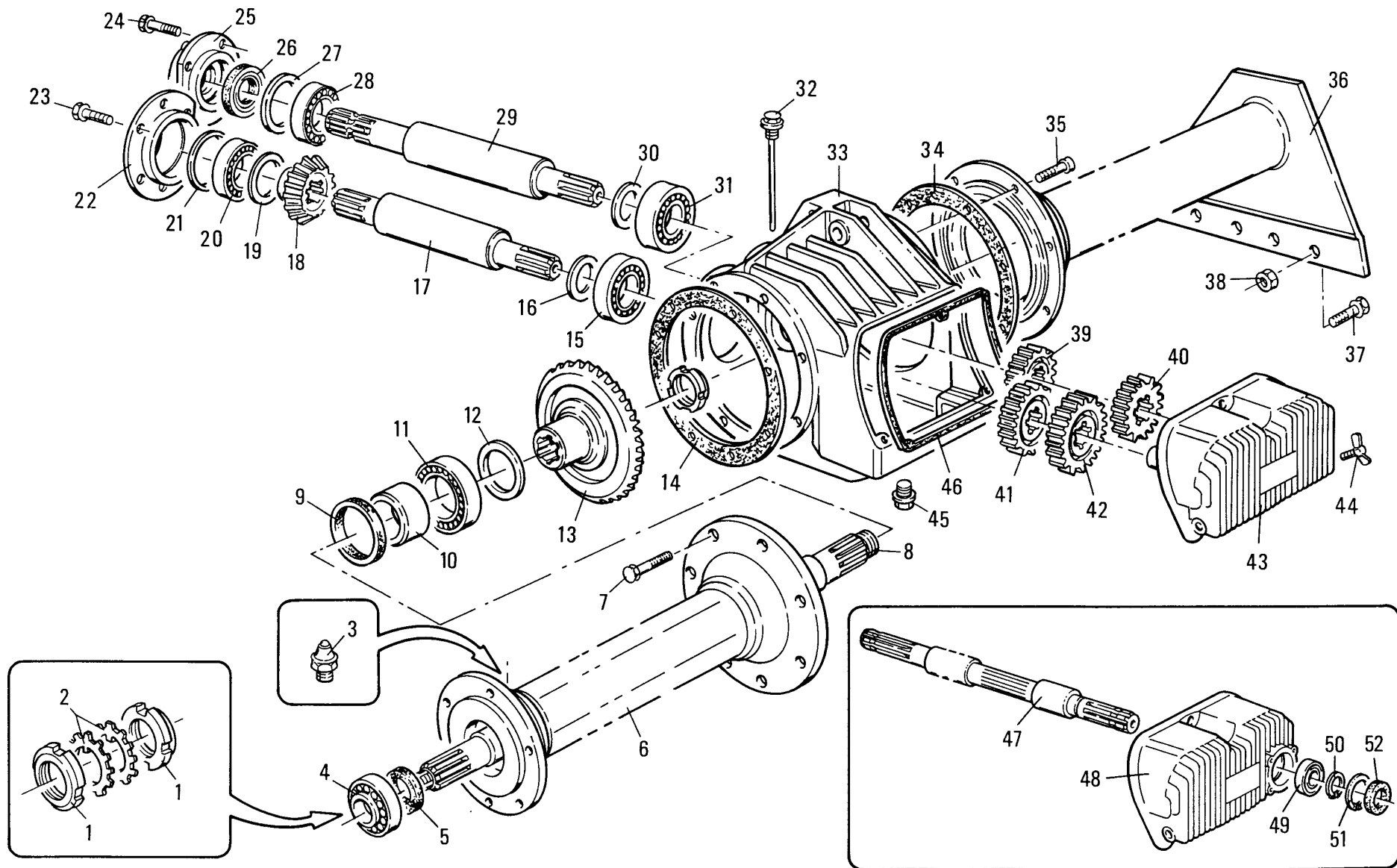




MURATORI MSC - MSCK (180 - 205)
TAV. 6.0

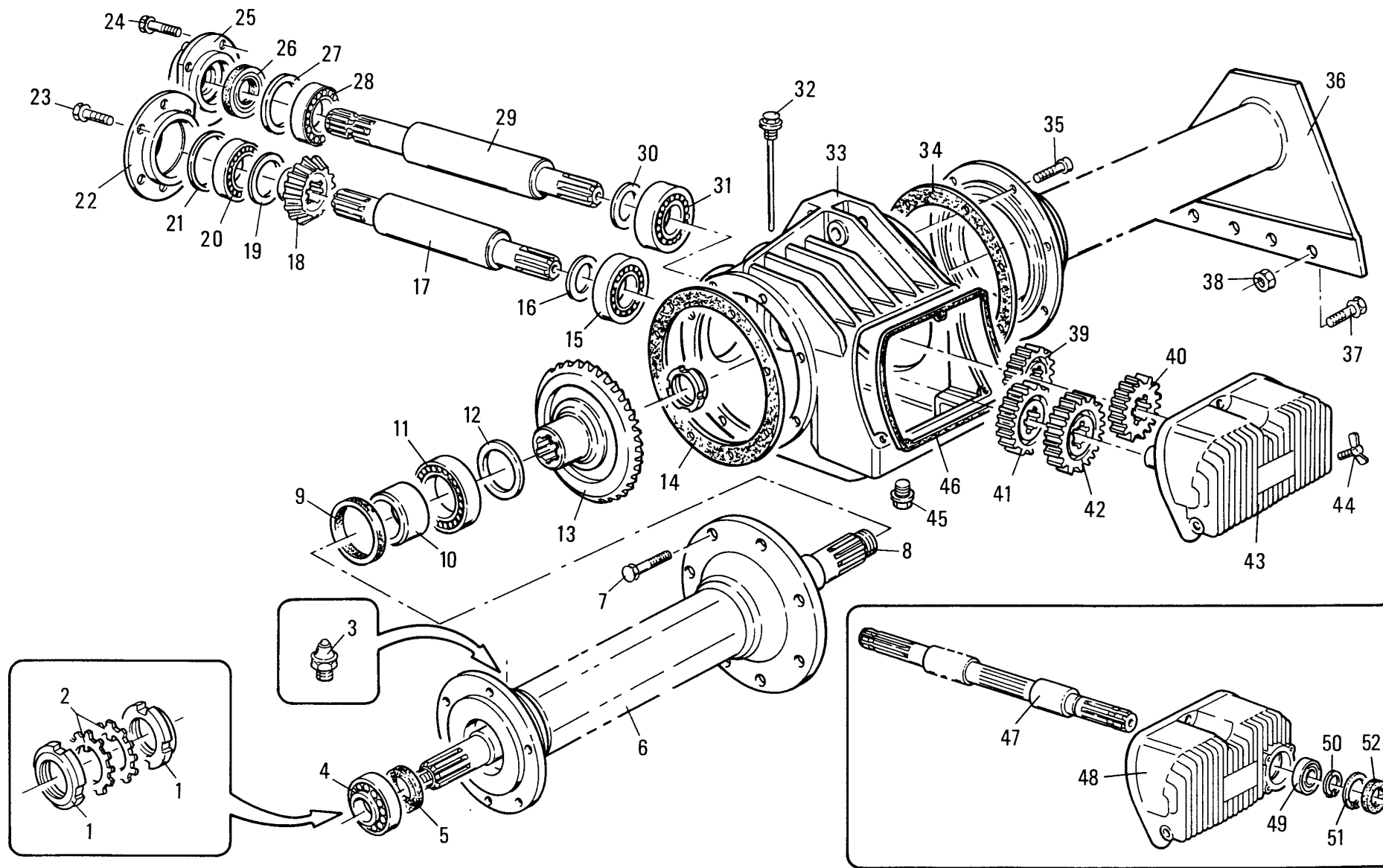
POS.	N°	CODICE Q	DESCRIZIONE	DESIGNATION	BENENNUNG	DESCRIPTION	DESIGNAZIONE	Da matr.	Fino matr
								De nr. serie	Jusqu'au nr. serie
								Vom Seriennr.	Bis Seriennr.
								From serial nr.	Up to serial nr.
1	67002300	1	CUSCINETTO	ROULEMENT	LAGER	BEARING	6311		
2	60000300	4	VITE	VIS	SCHRAUBE	SCREW	TE 14 x 40 UNI 5739		
3	62010800	4	DADO	ECROU	MUTTER	NUT	M 14 x 2 AUTOBLOCC.		
4	60000500	8	VITE	VIS	SCHRAUBE	SCREW	TE 12 x 30 UNI 5739		
5	61000500	8	RONDELLA	RONDELLE	SCHEIBE	WASHER	DENT. Ø 12 UNI 3704		
6	80001900		GUARNIZIONE	GARNITURE	DICHTUNG	SEAL			
7	65000300	2	LINGUETTA	CLAVETTE	KEIL	KEY	12 x 8 x 60		
8	40057900	1	CANOTTO	TUBE	ROHR	TUBE	180		
8	40058000	1	CANOTTO	TUBE	ROHR	TUBE	205		
9	31025900	1	SEMIASSE	DEMI-ESSIEU	ACHSWELLE	AXLE SHAFT	180		
9	31026000	1	SEMIASSE	DEMI-ESSIEU	ACHSWELLE	AXLE SHAFT	205		
10	66000900	1	ANELLO TENUTA	JOINT D'ETANCHEITE	DICHTUNGSRING	JUNT RING	80 x 100 x 10		
11	67002200	1	CUSCINETTO	ROULEMENT	LAGER	BEARING	6216		
12	10002200	1	CORONA	COURONNE	KRANZ	CROWN			
13	39001000	1	RONDELLA	RONDELLE	SCHEIBE	WASHER	PIANA Øe 70 Øi 25		
14	62011700	1	DADO	ECROU	MUTTER	NUT	M 24 x 2 H=18 AUTOBLOCC.		
15	02002300	1	SCATOLA	CARTER	GEHAEUSE	GEARBOX			
16	63000100	1	ANELLO ELASTICO	ARRETOIR	SPANNRING	SNAP-RING	Ø 90 I UNI 7437		
17	31027500	1	INGRANAGGIO	PIGNON	ZAHNRAD	GEAR	Z 18 Mod. 5,5		
18	31027700	1	INGRANAGGIO	PIGNON	ZAHNRAD	GEAR	Z 22 Mod. 5,5		
19	80002300	1	GUARNIZIONE	GARNITURE	DICHTUNG	SEAL			
20	61000400	3	RONDELLA	RONDELLE	SCHEIBE	WASHER	DENT. Ø10 UNI 3704		
21	60003700	3	VITE	VIS	SCHRAUBE	SCREW	AD ALETTE 10 x 25 UNI 5449		
22	40126400	1	COPERCHIO	COUVERCLE	DECKEL	COVER			
23	31027400	1	INGRANAGGIO	PIGNON	ZAHNRAD	GEAR	Z 16 Mod. 5,5		
24	31027600	1	INGRANAGGIO	PIGNON	ZAHNRAD	GEAR	Z 20 Mod. 5,5		





MURATORI MSC - MSCK (230 - 305)
TAV. 7.0

POS.	N°	CODICE	Q	DESCRIZIONE	DESIGNATION	BENENNUNG	DESCRIPTION	DESIGNAZIONE	Da matr.	Fino matr
									De nr. serie	Jusqu'au nr. serie
									Vom Seriennr.	Bis Seriennr.
									From serial nr.	Up to serial nr.
1	62001900	2		GHIERA	FRETTE	NUTMUTTER	RING NUT	M 45 x 1,5 KM		
2	62002000	2		ROSETTA	RONDELLE	UNTERLEGSSCHEIBE	WASHER	Ø 45		
3	64001800	1		INGRASSATORE	GRAISSEUR	SCHMIERNIPPEL	GREASE FITTING	M 10 x 1 DIRITTO		
4	67010100	1		CUSCINETTO	ROULEMENT	LAGER	BEARING	30311		
5	66005700	1		ANELLO TENUTA	JOINT D'ETANCHEITE	DICHTUNGSRING	JUNT RING	55 x 85 x 8		
6	40073100	1		CANOTTO	TUBE	ROHR	TUBE	230		
6	40073200	1		CANOTTO	TUBE	ROHR	TUBE	255		
6	40073400	1		CANOTTO	TUBE	ROHR	TUBE	305		
7	60002300	8		VITE	VIS	SCHRAUBE	SCREW	TE 10 x 25 UNI 5739		
8	31032100	1		SEMIASSE	DEMI-ESSIEU	ACHSWELLE	AXLE SHAFT	230		
8	31032200	1		SEMIASSE	DEMI-ESSIEU	ACHSWELLE	AXLE SHAFT	255		
8	31032400	1		SEMIASSE	DEMI-ESSIEU	ACHSWELLE	AXLE SHAFT	305		
9	66008200	1		ANELLO TENUTA	JOINT D'ETANCHEITE	DICHTUNGSRING	JUNT RING	65 x 85 x 10		
10	32141000	1		BOCCOLA	DOUILLE	BUECHSE	BUSHING			
11	67001600	1		CUSCINETTO	ROULEMENT	LAGER	BEARING	30214		
12	68013500			SPESSORE	EPAISSEUR	DICKE	THICKNESS	90 x 70		
13	10020800	1		CORONA	COURONNE	KRANZ	CROWN			
14	62003800	1		GHIERA	FRETTE	NUTMUTTER	RING NUT	M 45 x 1,5 AUTOBLOCC.		
15	67007000	1		CUSCINETTO	ROULEMENT	LAGER	BEARING	32209		
16	68075400			SPESSORE	EPAISSEUR	DICKE	THICKNESS	45 x 65		
17	31018600	1		ALBERO	ARBRE	WELLE	SHAFT			
18	10014600	1		PIGNONE	PIGNON	RITZEL	PINION			
19	68011900			SPESSORE	EPAISSEUR	DICKE	THICKNESS	55 x 62		
20	67007100	1		CUSCINETTO	ROULEMENT	LAGER	BEARING	32211		
21	68071000			SPESSORE	EPAISSEUR	DICKE	THICKNESS	100 x 85		
22	10014700	1		COPERCHIO	COUVERCLE	DECKEL	COVER			



MURATORI MSC - MSCK (230 - 305)
TAV. 7.0

POS.	N° CODICE Q	DESCRIZIONE	DESIGNATION	BENENNUNG	DESCRIPTION	DESIGNAZIONE	Da matr.	Fino matr
							De nr. serie Vom Seriennr. From serial nr.	Jusqu'au nr. serie Bis Seriennr. Up to serial nr.
23	60002300	6	VITE	VIS	SCHRAUBE	SCREW	TE 10 x 25 UNI 5739	
24	60000400	4	VITE	VIS	SCHRAUBE	SCREW	TE 10 x 30 UNI 5739	
25	02002500	1	COPERCHIO	COUVERCLE	DECKEL	COVER		
26	66011500	1	ANELLO TENUTA	JOINT D'ETANCHEITE	DICHTUNGSRING	JUNT RING	45 x 80 x 10	
27	68071000		SPESSORE	EPAISSEUR	DICKE	THICKNESS	100 x 85	
28	67002900	1	CUSCINETTO	ROULEMENT	LAGER	BEARING	30309	
29	10031600	1	ALBERO	ARBRE	WELLE	SHAFT		
30	68075400	1	SPESSORE	EPAISSEUR	DICKE	THICKNESS	45 x 65	
31	67007000	1	CUSCINETTO	ROULEMENT	LAGER	BEARING	32209	
32	68018700	1	TAPPO	BOUCHON	STOPFEN	PLUG		
33	02002400	1	SCATOLA	CARTER	GEHAEUSE	GEARBOX		
34	80006700	2	GUARNIZIONE	GARNITURE	DICHTUNG	SEAL		

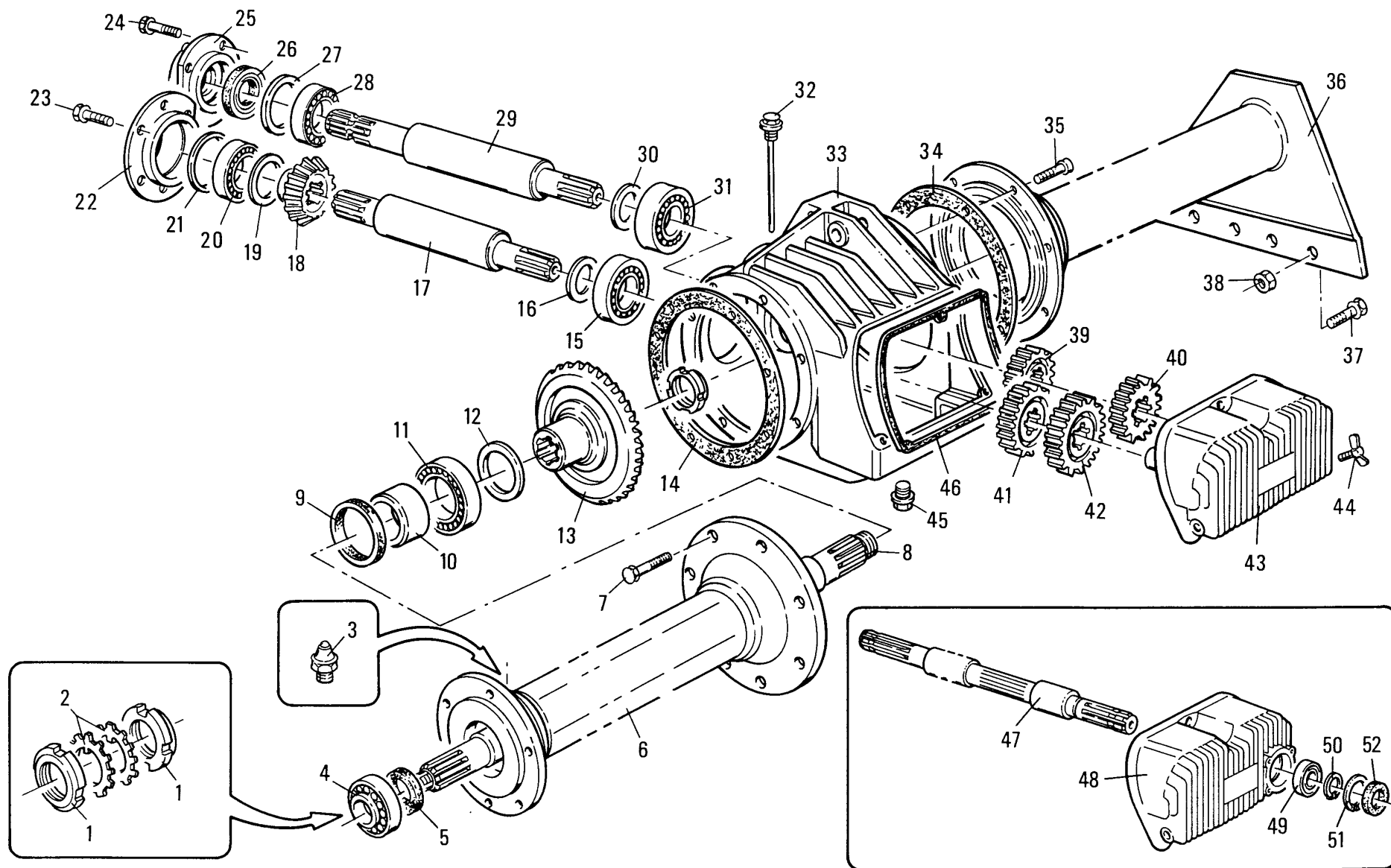
N.B.: Per le macchine acquistate prima del "MARZO 1990" in caso di sostituzione della scatola (pos. 33) occorre ordinare anche i particolari pos. 24, 25, 26, 27, 29

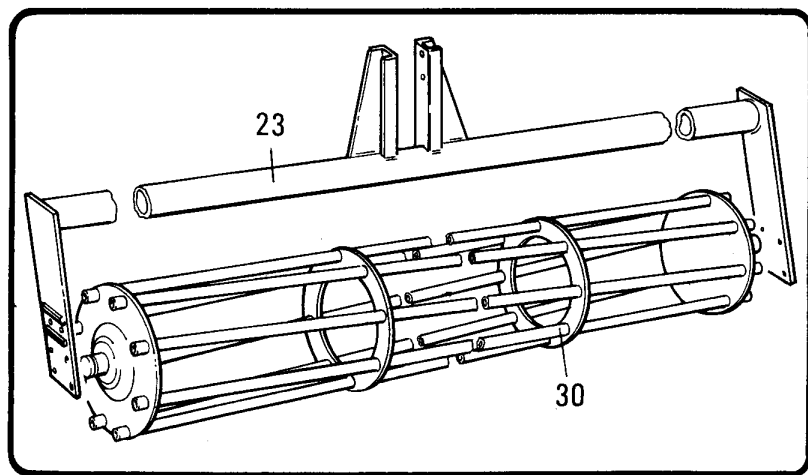
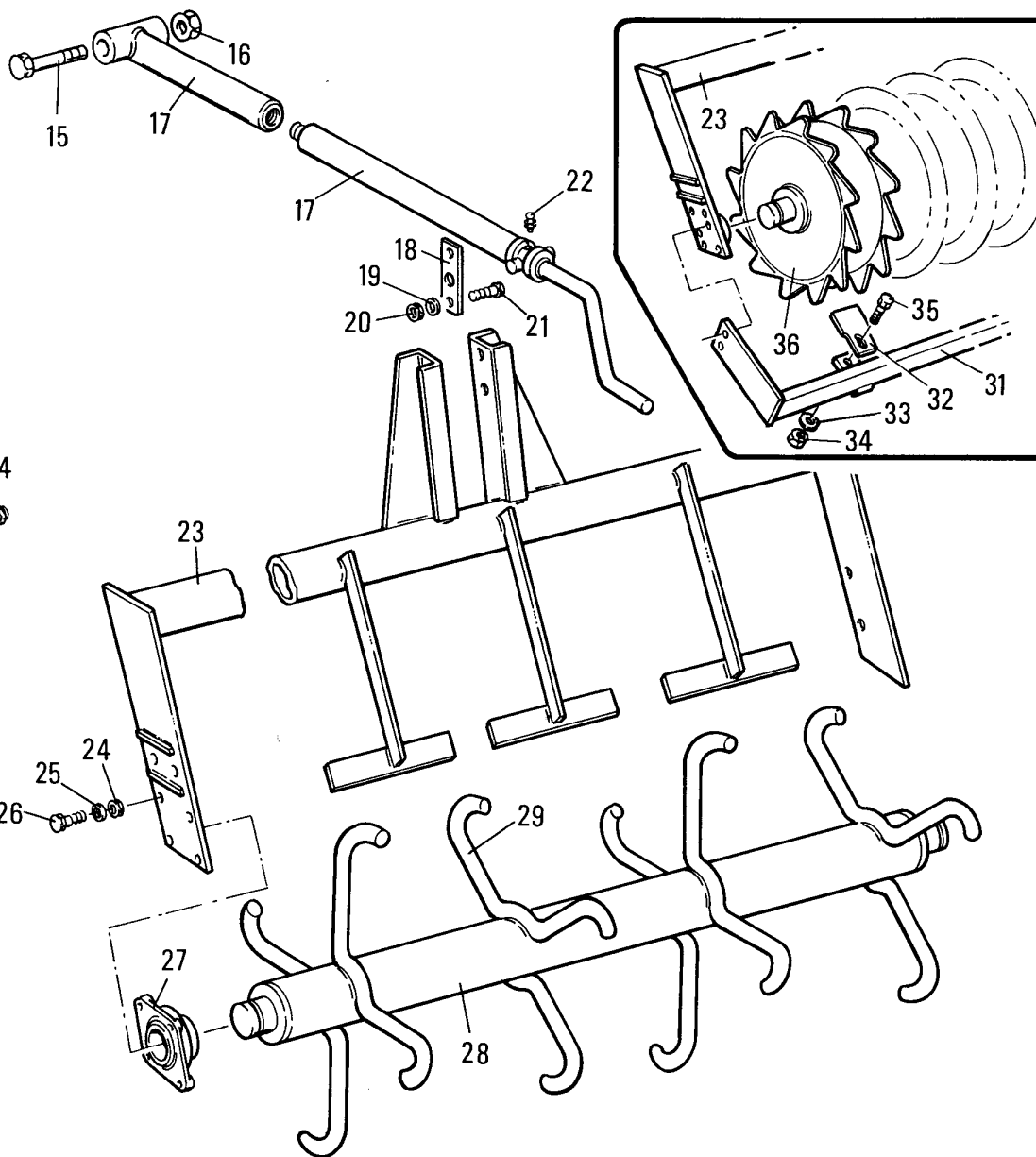
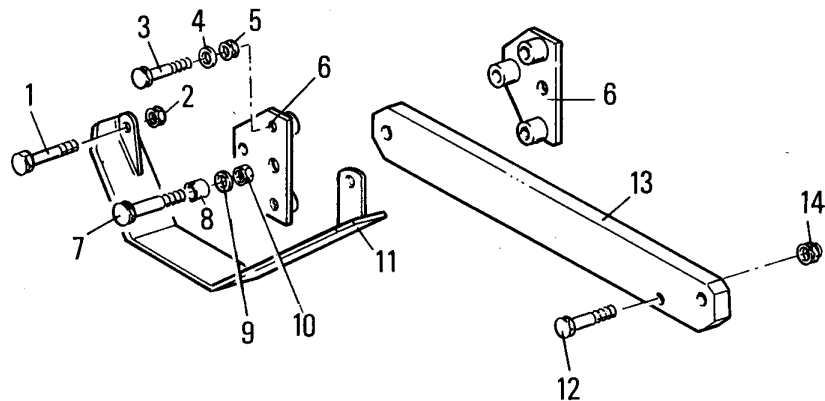
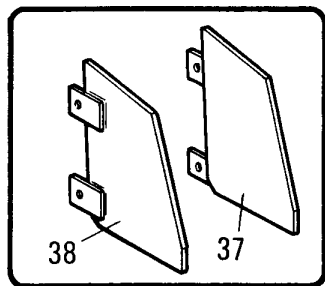
N.B.: Pour les machines achetees avant "MARS 1990", en cas de remplacement du boitier (pos. 33) il faut commander aussi les pieces N° 24, 25, 26, 27, 29

ANM.: Wenn bei Maschinen, die vor "MARZ 1990" erworben wurden, das Gehäuse (pos. 33) ersetzt werden muß, sind auch die Teile nr. 24, 25, 26, 27, 29 zu bestellen

NOTE.: Also order parts N° 24, 25, 26, 27, 29 if the box (pos. 33) needs replacing in machines purchased before MARCH 1990

35	60002300	8	VITE	VIS	SCHRAUBE	SCREW	TE 10 x 25 UNI 5739	
36	40093000	1	DOPPIO CANOTTO	DOUBLE TUBE	DOPPELTES ROHR	DOUBLE TUBE	230	
36	40093100	1	DOPPIO CANOTTO	DOUBLE TUBE	DOPPELTES ROHR	DOUBLE TUBE	255	
36	40125400	1	DOPPIO CANOTTO	DOUBLE TUBE	DOPPELTES ROHR	DOUBLE TUBE	305	
37	60007100	4	VITE	VIS	SCHRAUBE	SCREW	TE 14 x 50 UNI 5737	
38	62010800	4	DADO	ECROU	MUTTER	NUT	M 14 x 2 AUTOBLOCC.	
39	31044900	1	INGRANAGGIO	PIGNON	ZAHNRAD	GEAR	Z 19	
39	31047500	1	INGRANAGGIO	PIGNON	ZAHNRAD	GEAR	Z 24 1000 RPM	

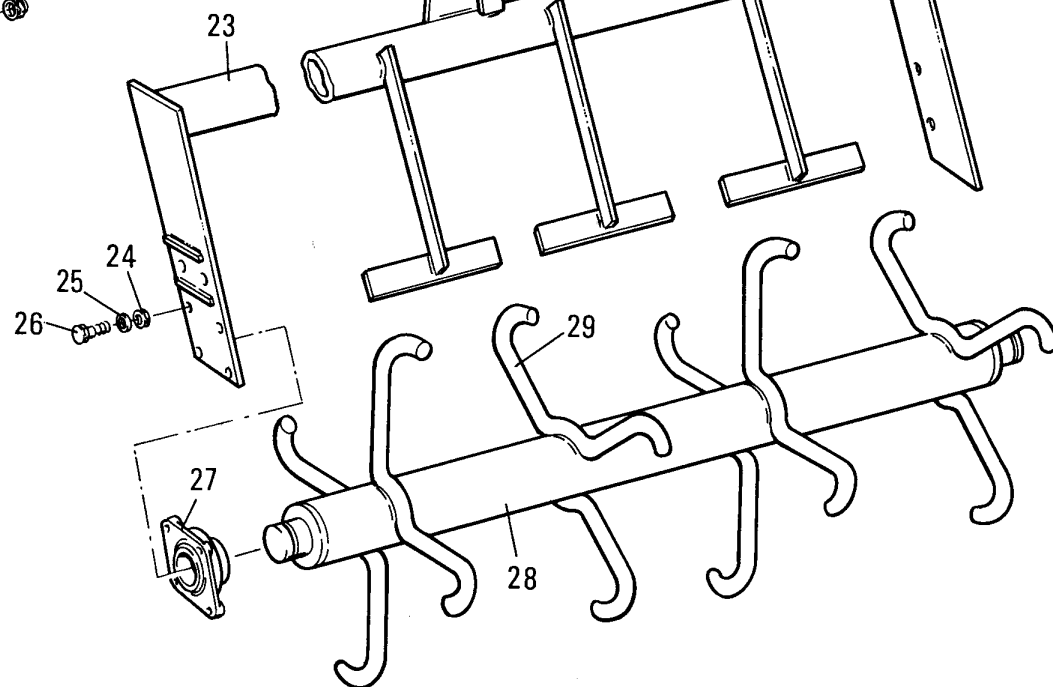
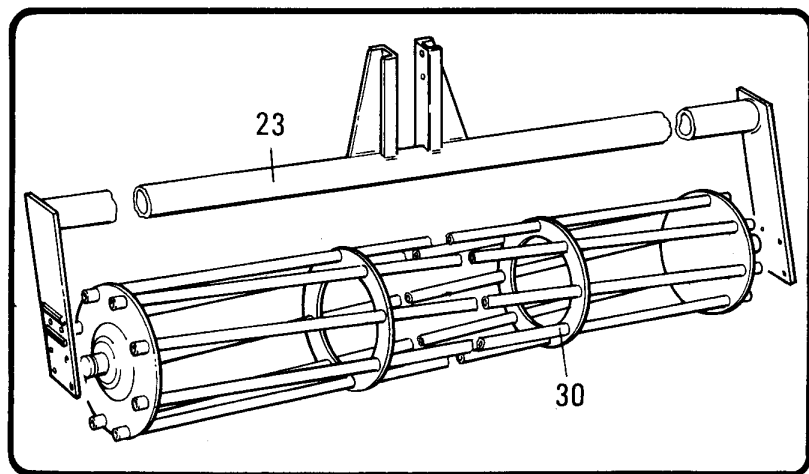
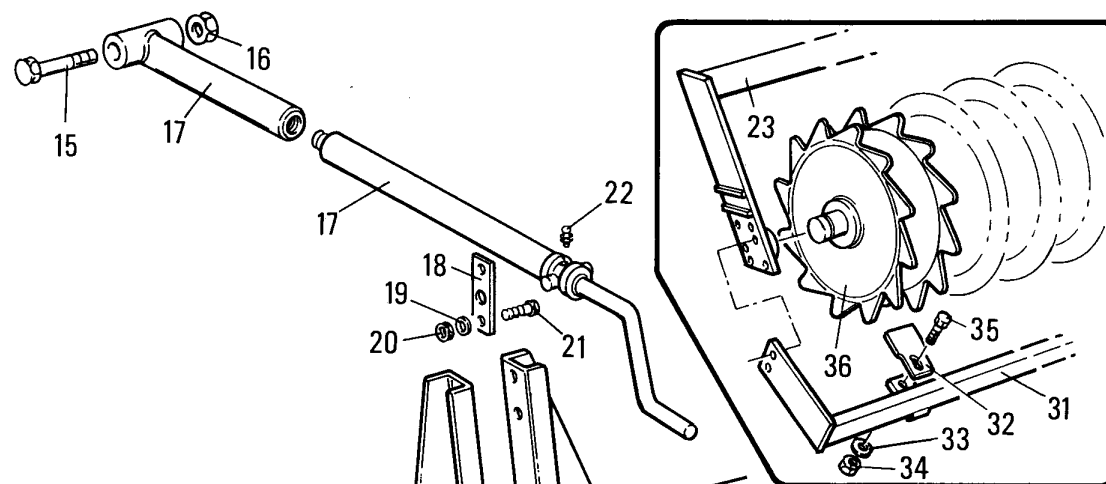
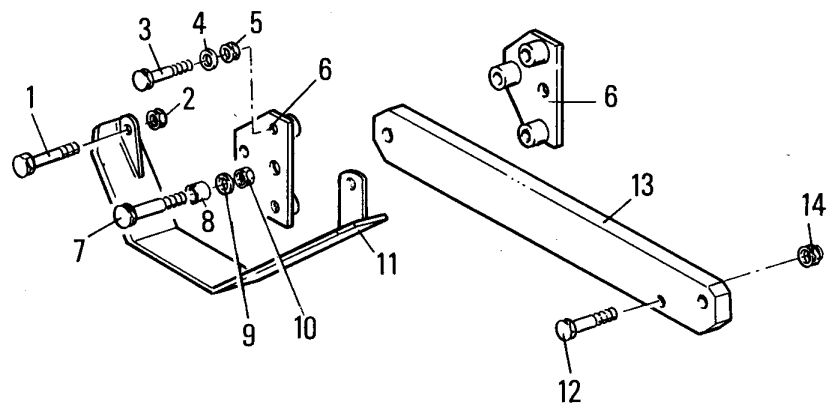
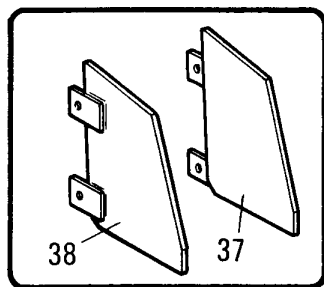




MURATORI MSCR - MSCK

TAV. 8.0

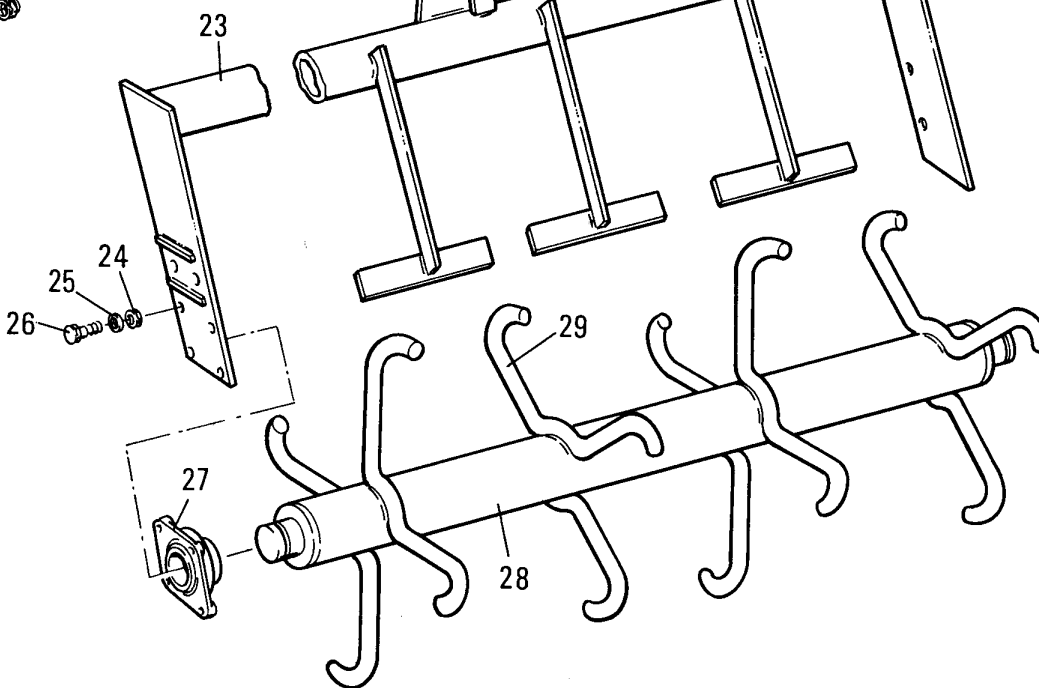
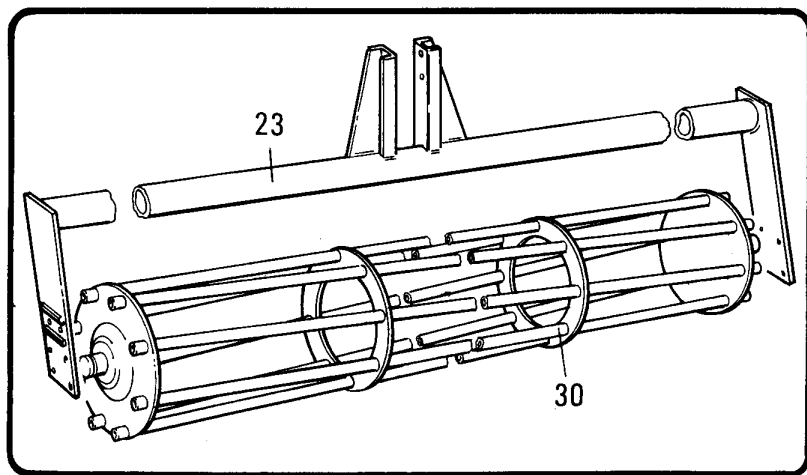
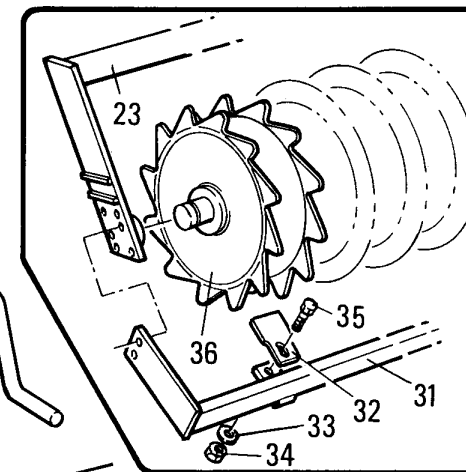
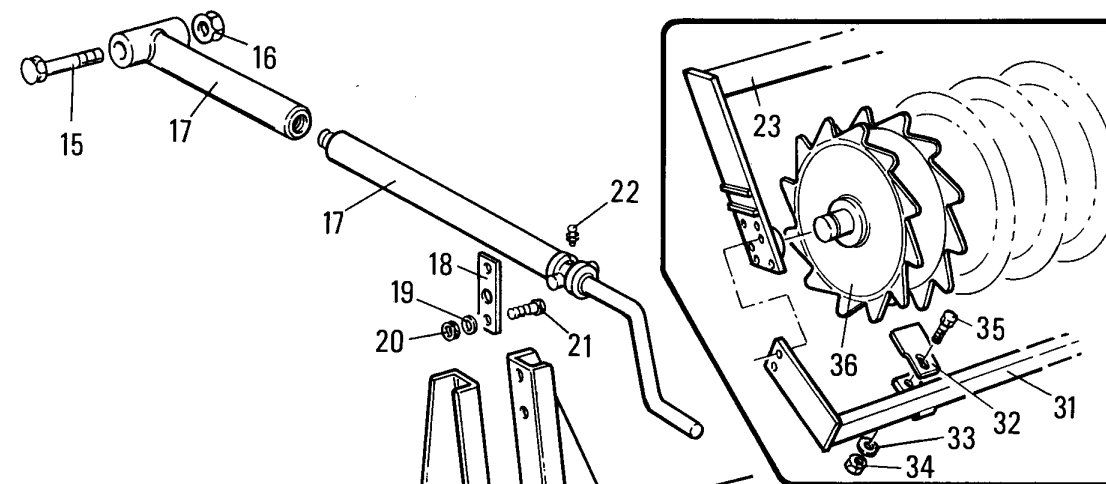
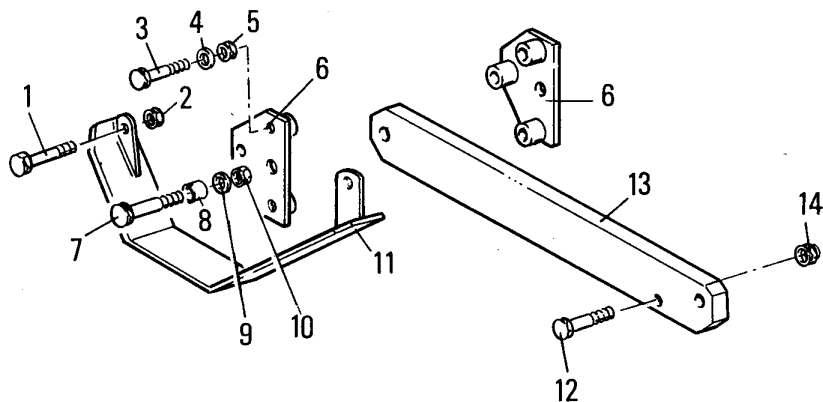
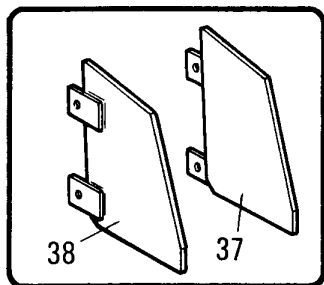
POS.	N° CODICE	Q	DESCRIZIONE	DESIGNATION	BENENNUNG	DESCRIPTION	DESIGNAZIONE	Da matr.	Fino matr
								De nr. serie	Jusqu'au nr. serie
								Vom Seriennr.	Bis Seriennr.
								From serial nr.	Up to serial nr.
1	60000300	2	VITE	VIS	SCHRAUBE	SCREW	TE 14 x 40 UNI 5739		
2	62000300	2	DADO	ECROU	MUTTER	NUT	TE 14 x 2 BASSO UNI 5589		
3	60003500	6	VITE	VIS	SCHRAUBE	SCREW	TE 14 x 60 UNI 5737 (MSCR)		
3	60003500	2	VITE	VIS	SCHRAUBE	SCREW	TE 14 x 60 UNI 5737 (MSCK)		
3	60007700	4	VITE	VIS	SCHRAUBE	SCREW	TE 14 x 70 UNI 5737 (MSCK)		
4	61000100	6	RONDELLA	RONDELLE	SCHEIBE	WASHER	DENT. Ø 14 UNI 3704		
5	62000300	6	DADO	ECROU	MUTTER	NUT	M 14 x 2 BASSO UNI 5589		
6	40059400	2	MENSOLA	CONSOLE	KONSOLE	BRACKET			
7	60012400	2	VITE	VIS	SCHRAUBE	SCREW	TE 16 x 1,5 x 70 UNI 5738		
8	32053500	2	BOCCOLA	DOUILLE	BUECHSE	BUSHING			
9	61001100	2	RONDELLA	RONDELLE	SCHEIBE	WASHER	DENT. Ø 16 UNI 3704		
10	62002700	2	DADO	ECROU	MUTTER	NUT	M 16 x 1,5 UNI 5587		
11	40060500	1	PROTEZIONE	PROTECTION	SCHUTZ	GUARD			
12	60008500	4	VITE	VIS	SCHRAUBE	SCREW	TE 16 x 1,5 x 60 UNI 5738		
13	30082801	2	BRACCIO	BRAS	ARM	ARM	180 - 255		
13	30082601	2	BRACCIO	BRAS	ARM	ARM	205		
13	30082700	2	BRACCIO	BRAS	ARM	ARM	230 - 305		
14	62010900	4	DADO	ECROU	MUTTER	NUT	M 16 x 1,5 UNI 5587		
15	60016800	1	VITE	VIS	SCHRAUBE	SCREW	TE 16 x 1,5 x 100 UNI 5738		
16	62010900	2	DADO	ECROU	MUTTER	NUT	M 16 x 1,5 AUTOBLOCC.		
17	45019200	1	VITE REGISTRO	VIS REGLAGE	TIEFEINSTELLUNGSREGIS	ADJUSTING SCREW			
18	30034600	2	RITEGNO	FIXAGE	BEFESTIGUNG	CLAMP			
19	61000500	4	RONDELLA	RONDELLE	SCHEIBE	WASHER	DENT. Ø 12 UNI 3704		
20	62000600	4	DADO	ECROU	MUTTER	NUT	M 12 x 1,75 UNI 5587		
21	60001200	4	VITE	VIS	SCHRAUBE	SCREW	TE 12 x 35 UNI 5739		
22	64000200	1	INGRASSATORE	GRAISSEUR	SCHMIERNIPPEL	GREASE FITTING	M 6 x 1		

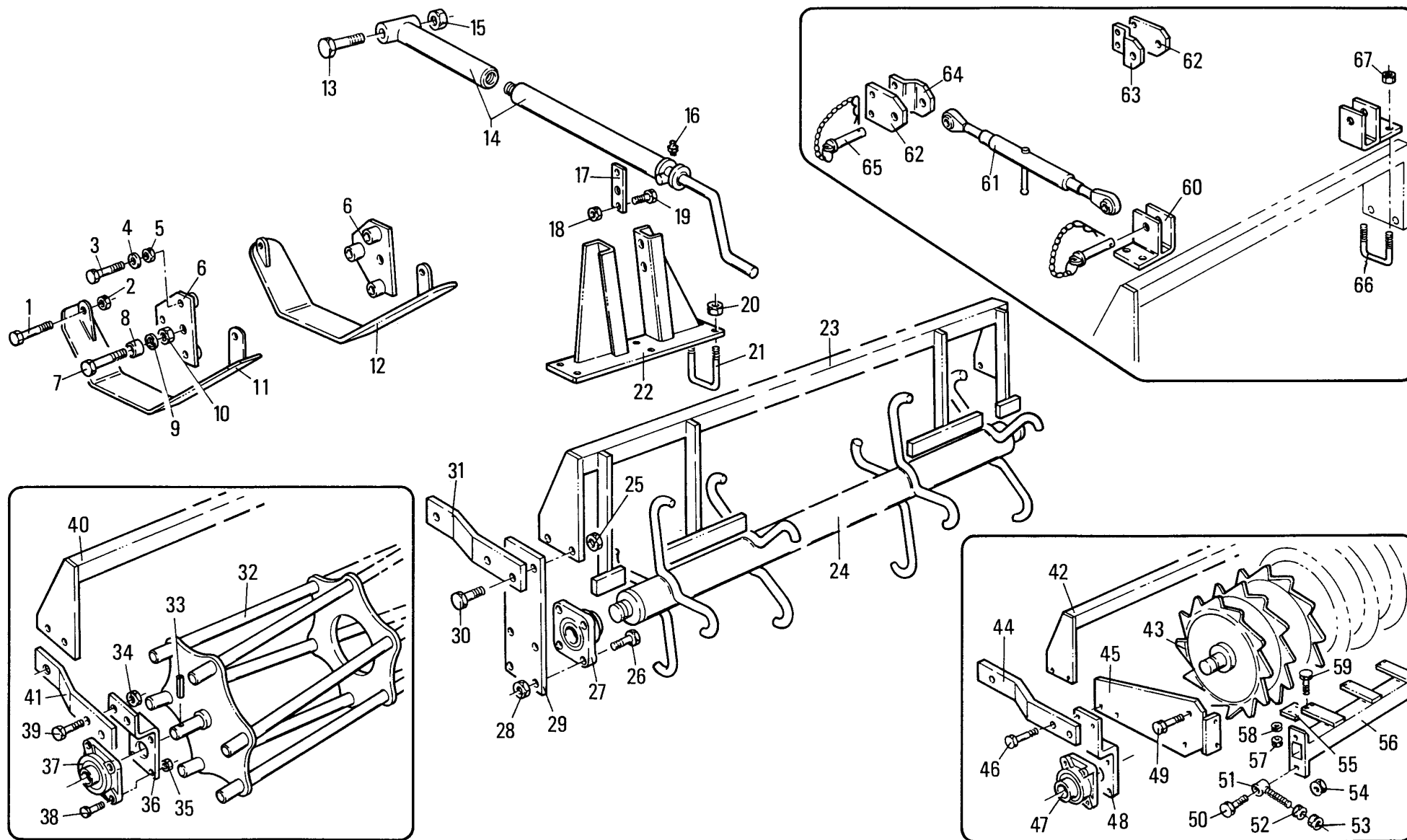


MURATORI MSCR - MSCK

TAV. 8.0

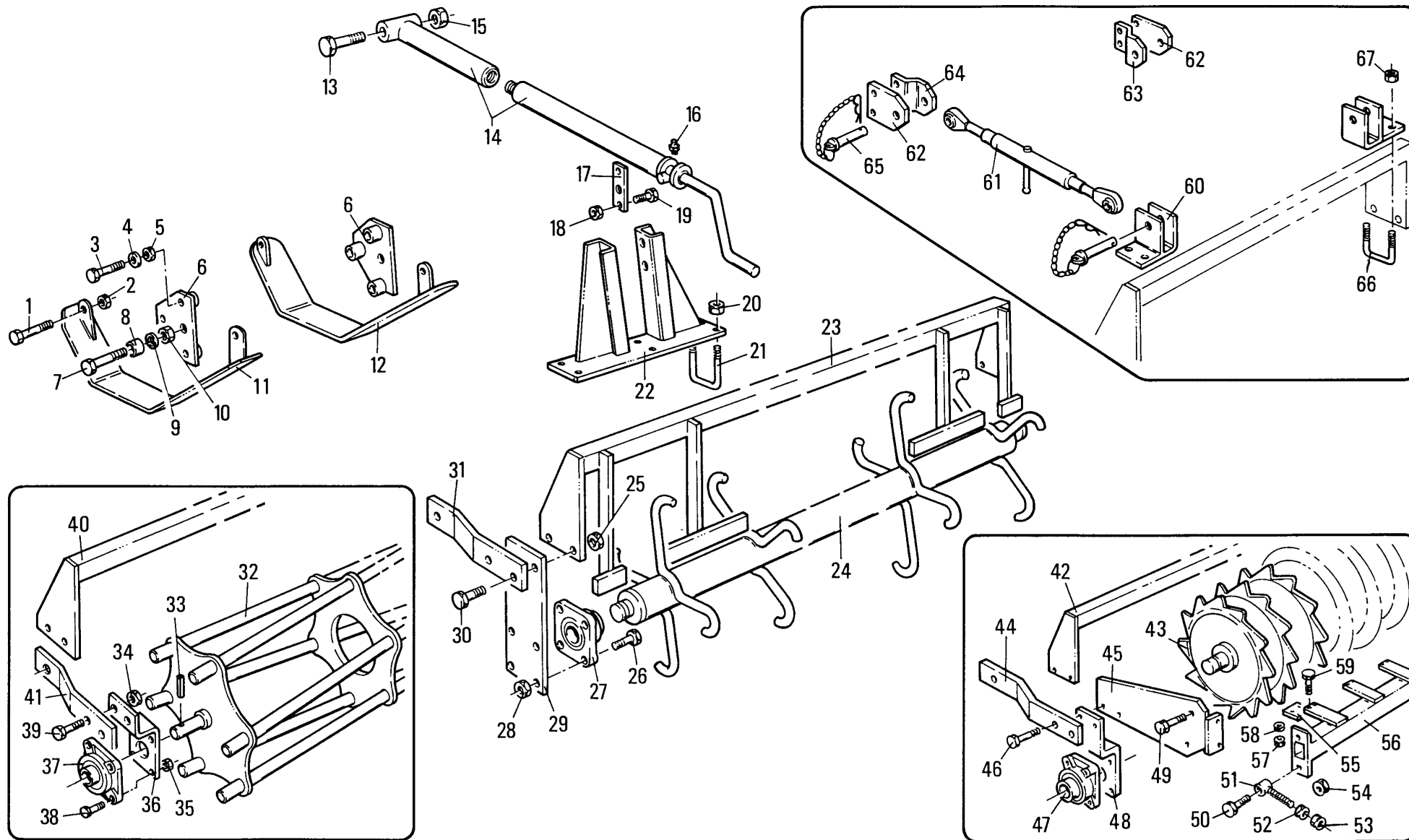
POS.	N° CODICE Q	DESCRIZIONE	DESIGNATION	BENENNUNG	DESCRIPTION	DESIGNAZIONE	Da matr.	Fino matr
							De nr. serie Vom Seriennr. From serial nr.	Jusqu'au nr. serie Bis Seriennr. Up to serial nr.
23	41071500	1	TELAIO POSTERIORE	CHASSIS ARRIERE	HINTERER RAHMEN	REAR MAIN FRAME	180	
23	41071600	1	TELAIO POSTERIORE	CHASSIS ARRIERE	HINTERER RAHMEN	REAR MAIN FRAME	205	
23	41071700	1	TELAIO POSTERIORE	CHASSIS ARRIERE	HINTERER RAHMEN	REAR MAIN FRAME	230	
23	41071800	1	TELAIO POSTERIORE	CHASSIS ARRIERE	HINTERER RAHMEN	REAR MAIN FRAME	255	
24	41072000	1	TELAIO POSTERIORE	CHASSIS ARRIERE	HINTERER RAHMEN	REAR MAIN FRAME	305	
24	62000600	8	DADO	ECROU	MUTTER	NUT	M 12 x 1,75 UNI 5587	
25	61000500	8	RONDELLA	RONDELLE	SCHEIBE	WASHER	DENT. Ø 12 UNI 3704	
26	60011600	8	VITE	VIS	SCHRAUBE	SCREW	TE 12 x 50 UNI 5737	
27	67009800	2	SUPPORTO	SUPPORT	TRAEGER	SUPPORT	UCF 207	
28	42039900	1	RULLO PUNTONI	ROULEAU A POINTES	SPITZENWALZE	SPIKED ROLLER	180	
28	42040000	1	RULLO PUNTONI	ROULEAU A POINTES	SPITZENWALZE	SPIKED ROLLER	205	
28	42040100	1	RULLO PUNTONI	ROULEAU A POINTES	SPITZENWALZE	SPIKED ROLLER	230	
28	42040200	1	RULLO PUNTONI	ROULEAU A POINTES	SPITZENWALZE	SPIKED ROLLER	255	
28	42040400	1	RULLO PUNTONI	ROULEAU A POINTES	SPITZENWALZE	SPIKED ROLLER	305	
29	31025500		PUNTONE	ETAI	STREBE	STRUT		
30	42041301	1	RULLO GABBIA	ROULEAU CAGE	STABWALZE	CAGE ROLLER	180	
30	42041401	1	RULLO GABBIA	ROULEAU CAGE	STABWALZE	CAGE ROLLER	205	
30	42041501	1	RULLO GABBIA	ROULEAU CAGE	STABWALZE	CAGE ROLLER	230	
30	42041601	1	RULLO GABBIA	ROULEAU CAGE	STABWALZE	CAGE ROLLER	255	
30	42041801	1	RULLO GABBIA	ROULEAU CAGE	STABWALZE	CAGE ROLLER	305	
31	40110700	1	RASTRELLIERA PACKER	RATELIER DU ROULEAU	ABSTREIFERGESTELL	ROLLER CLEANER RACK	180	
31	40110800	1	RASTRELLIERA PACKER	RATELIER DU ROULEAU	ABSTREIFERGESTELL	ROLLER CLEANER RACK	205	
31	40110900	1	RASTRELLIERA PACKER	RATELIER DU ROULEAU	ABSTREIFERGESTELL	ROLLER CLEANER RACK	230	
31	40111000	1	RASTRELLIERA PACKER	RATELIER DU ROULEAU	ABSTREIFERGESTELL	ROLLER CLEANER RACK	255	
31	40111200	1	RASTRELLIERA PACKER	RATELIER DU ROULEAU	ABSTREIFERGESTELL	ROLLER CLEANER RACK	305	
32	39063600		RASCHIETTO (1 asola)	GRATTOIR (1 trou)	ABSTREIFER (1 langloch)	CLEANER (1 slot)		





MURATORI MSC - MSCR
TAV. 8.1

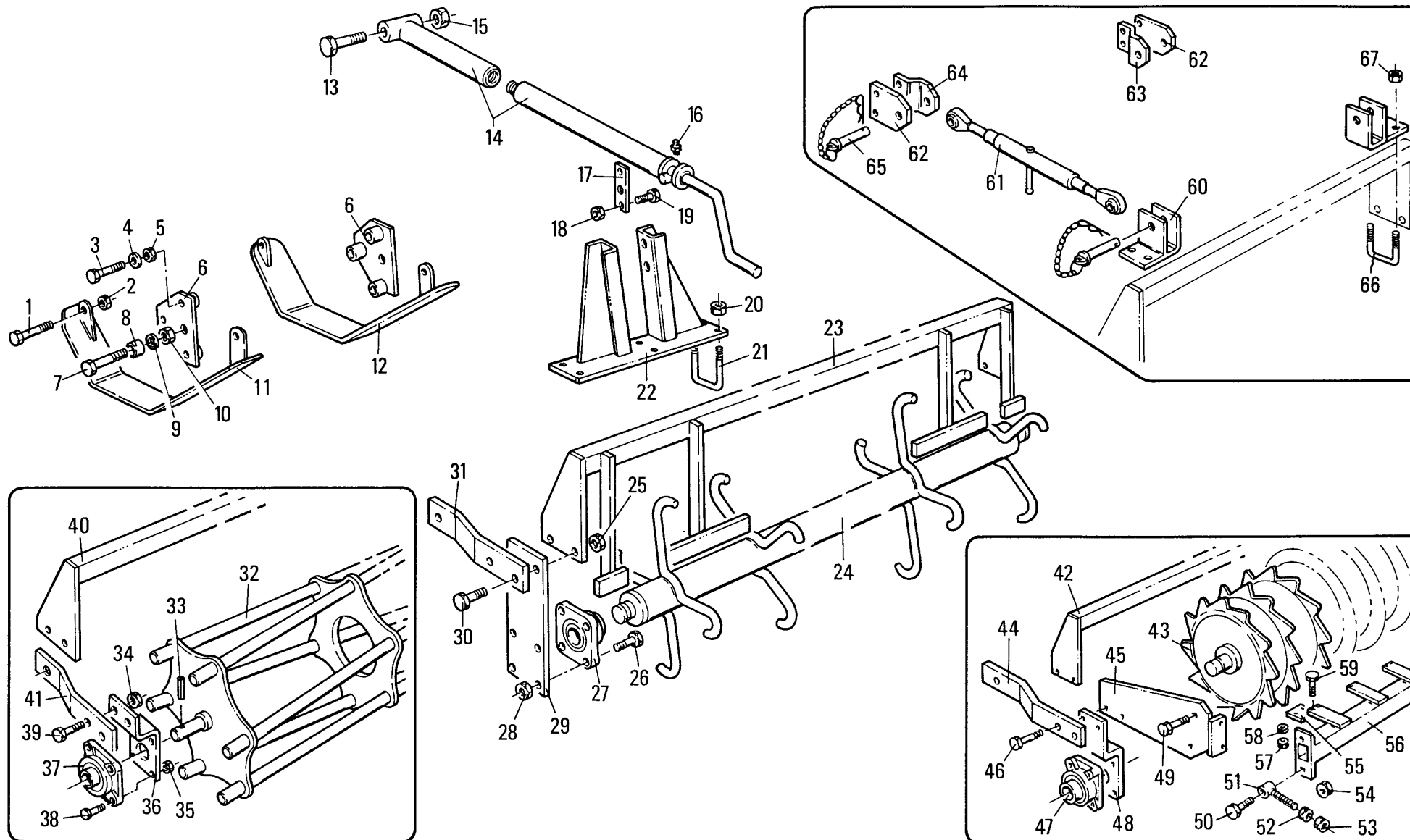
POS.	N°	CODICE Q	DESCRIZIONE	DESIGNATION	BENENNUNG	DESCRIPTION	DESIGNAZIONE	Da matr.	Fino matr
								De nr. serie	Jusqu'au nr. serie
								Vom Seriennr.	Bis Seriennr.
								From serial nr.	Up to serial nr.
1	60000300	4	VITE	VIS	SCHRAUBE	SCREW	TE 14 x 40 UNI 5739		
2	62000300	4	DADO	ECROU	MUTTER	NUT	TE 14 x 2 UNI 5589		
3	60003500	6	VITE	VIS	SCHRAUBE	SCREW	TE 14 x 60		
4	61000100	6	RONDELLA	RONDELLE	SCHEIBE	WASHER	DENT. Ø 14 UNI 3704		
5	62000300	6	DADO	ECROU	MUTTER	NUT	M 14 x 2 UNI 5589		
6	40059400	2	MENSOLA	CONSOLE	KONSOLE	BRACKET			
7	60012400	2	VITE	VIS	SCHRAUBE	SCREW	TE 16 x 1,5 x 70 UNI 5738		
8	32053500	2	BOCCOLA	DOUILLE	BUECHSE	BUSHING			
9	61006500	2	RONDELLA	RONDELLE	SCHEIBE	WASHER	PIANA Ø 16 UNI 6592		
10	62011000	2	DADO	ECROU	MUTTER	NUT	M 16 x 1,5 AUTOBLOCC.		
11	40060500	1	PROTEZIONE SX	PROTECTION (G)	SCHUTZ (LINKS)	GUARD (LH)			
12	40220300	1	PROTEZIONE DX	PROTECTION (D)	SCHUTZ (RECHTS)	GUARD (RH)			
13	60016800	1	VITE	VIS	SCHRAUBE	SCREW	TE 16 x 1,5 x 100 UNI 5738		
14	45019200	1	VITE REGISTRO	VIS REGLAGE	TIEFEINSTELLUNGSREGIS	ADJUSTING SCREW			
15	62010900	1	DADO	ECROU	MUTTER	NUT	M 16 x 1,5 AUTOBLOCC.		
16	64000200	1	INGRASSATORE	GRAISSEUR	SCHMIERNIPPEL	GREASE FITTING	M 6 x 1		
17	30023600	2	RITEGNO	FIXAGE	BEFESTIGUNG	CLAMP			
18	62010400	4	DADO	ECROU	MUTTER	NUT	M 10 x 1,5 AUTOBLOCC.		
19	60021300	4	VITE	VIS	SCHRAUBE	SCREW	TE 10 x 30 UNI 5739		
20	62010400	6	DADO	ECROU	MUTTER	NUT	M 10 x 1,5 AUTOBLOCC.		
21	38017300	3	CAVALLOTTO	ARRETOIR	KLEMMSTUECK	UBOLT			
22	40206300	1	TORRETTA	TOURELLE	OBERWAGEN	TURRET			
23	40173400	1	TELAIO POSTERIORE	CHASSIS ARRIERE	HINTERER RAHMEN	REAR MAIN FRAME	230		
23	40173500	1	TELAIO POSTERIORE	CHASSIS ARRIERE	HINTERER RAHMEN	REAR MAIN FRAME	255		
23	40187400	1	TELAIO POSTERIORE	CHASSIS ARRIERE	HINTERER RAHMEN	REAR MAIN FRAME	305		
24	42057300	1	RULLO PUNTONI	ROULEAU A POINTES	SPITZENWALZE	SPIKED ROLLER	230		



MURATORI MSC - MSCR

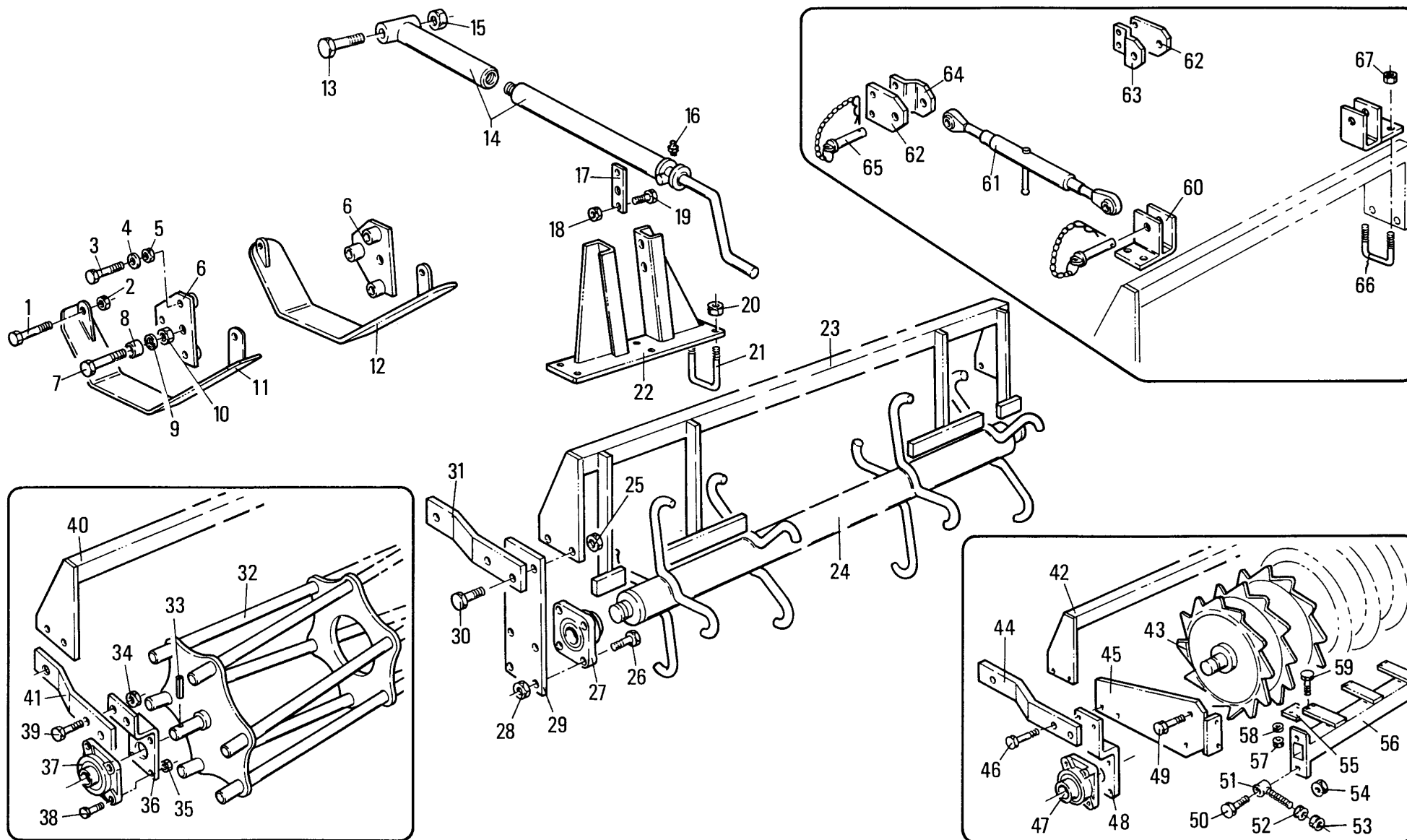
TAV. 8.1

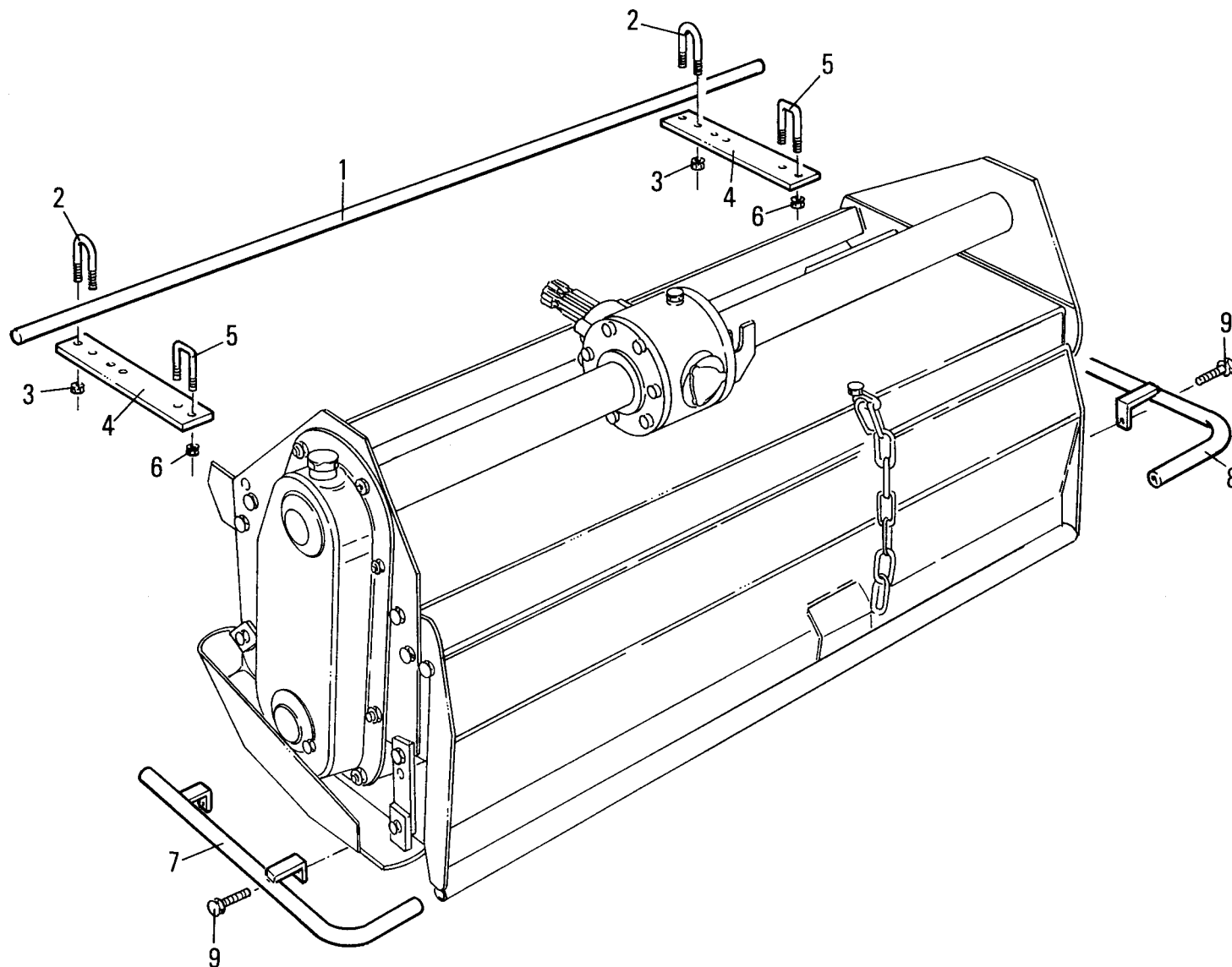
POS.	N° CODICE	Q	DESCRIZIONE	DESIGNATION	BENENNUNG	DESCRIPTION	DESIGNAZIONE	Da matr.	Fino matr
								De nr. serie	Jusqu'au nr. serie
								Vom Seriennr.	Bis Seriennr.
								From serial nr.	Up to serial nr.
24	42057400	1	RULLO PUNTONI	ROULEAU A POINTES	SPITZENWALZE	SPIKED ROLLER	255		
24	42060100	1	RULLO PUNTONI	ROULEAU A POINTES	SPITZENWALZE	SPIKED ROLLER	305		
25	62010800	4	DADO	ECROU	MUTTER	NUT	M 14 x 2 UNI AUTOBLOCC.		
26	60031400	8	VITE	VIS	SCHRAUBE	SCREW	TE 14 x 45 UNI 5739		
27	67009800	2	SUPPORTO	SUPPORT	TRAEGER	SUPPORT	UCF 207		
28	62010800	8	DADO	ECROU	MUTTER	NUT	M 14 x 2 AUTOBLOCC.		
29	30136600	2	STAFFA	BRIDE	BUEGEL	BRACKET			
30	60036800	4	VITE	VIS	SCHRAUBE	SCREW	TE 14 x 70 UNI 5737		
31	30164800	2	BRACCIO	BRAS	ARM	ARM	230		
31	30164700	2	BRACCIO	BRAS	ARM	ARM	255		
31	30165000	2	BRACCIO	BRAS	ARM	ARM	305		
32	42058000	1	RULLO GABBIA	ROULEAU CAGE	STABWALZE	CAGE ROLLER	230		
32	42058100	1	RULLO GABBIA	ROULEAU CAGE	STABWALZE	CAGE ROLLER	255		
32	42058200	1	RULLO GABBIA	ROULEAU CAGE	STABWALZE	CAGE ROLLER	305		
33	64001400	2	SPINA ELASTICA	GOUPILLE ELASTIQUE	SPANNSTIFT	ELASTIC PIN	8 x 50 UNI 6873		
34	62010800	4	DADO	ECROU	MUTTER	NUT	M 14 x 2 AUTOBLOCC.		
35	62010800	8	DADO	ECROU	MUTTER	NUT	M 14 x 2 AUTOBLOCC.		
36	30123600	2	STAFFA	BRIDE	BUEGEL	BRACKET			
37	67009800	2	SUPPORTO	SUPPORT	TRAEGER	SUPPORT	UCF 207		
38	60031400	8	VITE	VIS	SCHRAUBE	SCREW	TE 14 x 45 UNI 5739		
39	60036800	4	VITE	VIS	SCHRAUBE	SCREW	TE 14 x 70 UNI 5737		
40	41099900	1	TELAIO POSTERIORE	CHASSIS ARRIERE	HINTERER RAHMEN	REAR MAIN FRAME	230		
40	41100000	1	TELAIO POSTERIORE	CHASSIS ARRIERE	HINTERER RAHMEN	REAR MAIN FRAME	255		
40	41102700	1	TELAIO POSTERIORE	CHASSIS ARRIERE	HINTERER RAHMEN	REAR MAIN FRAME	305		
41	30164800	2	BRACCIO	BRAS	ARM	ARM	230		
41	30164900	2	BRACCIO	BRAS	ARM	ARM	255 - 305		

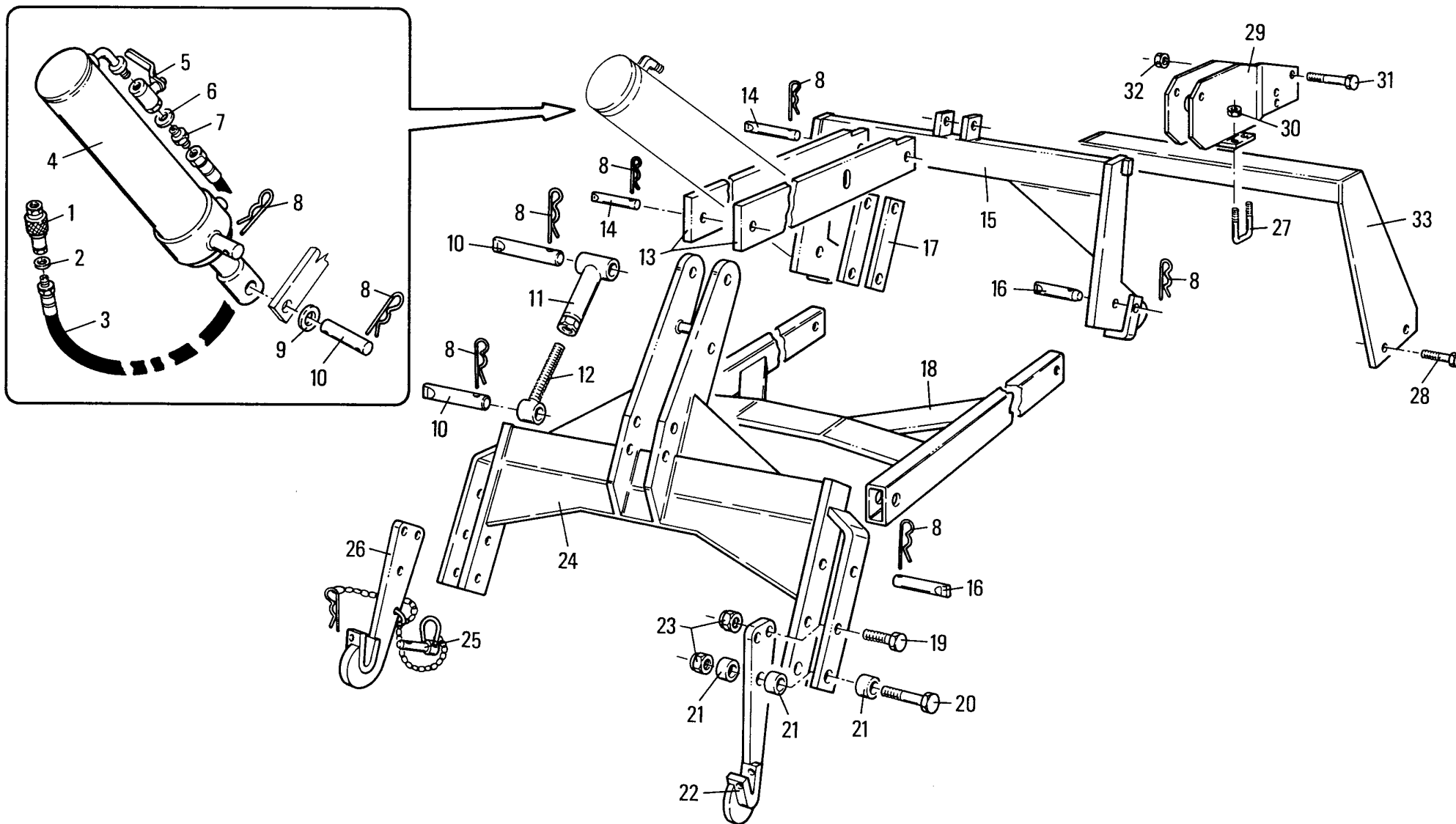


MURATORI MSC - MSCR
TAV. 8.1

POS.	N° CODICE	Q	DESCRIZIONE	DESIGNATION	BENENNUNG	DESCRIPTION	DESIGNAZIONE	Da matr.	Fino matr
								De nr. serie Vom Seriennr. From serial nr.	Jusqu'au nr. serie Bis Seriennr. Up to serial nr.
42	41099900	1	TELAIO POSTERIORE	CHASSIS ARRIERE	HINTERER RAHMEN	REAR MAIN FRAME	230		
42	41100000	1	TELAIO POSTERIORE	CHASSIS ARRIERE	HINTERER RAHMEN	REAR MAIN FRAME	255		
42	41102700	1	TELAIO POSTERIORE	CHASSIS ARRIERE	HINTERER RAHMEN	REAR MAIN FRAME	305		
43	42058800	1	RULLO PACKER	ROULEAU PACKER	PACKERWALZE	PACKER ROLLER	230		
43	42058900	1	RULLO PACKER	ROULEAU PACKER	PACKERWALZE	PACKER ROLLER	255		
43	42059000	1	RULLO PACKER	ROULEAU PACKER	PACKERWALZE	PACKER ROLLER	305		
44	30164800	2	BRACCIO	BRAS	ARM	ARM	230		
44	30164900	2	BRACCIO	BRAS	ARM	ARM	255-305		
45	40187100	1	BRACCIO SX	BRAS (G)	ARM (LINKS)	ARM (LH)			
45	40187200	1	BRACCIO DX	BRAS (D)	ARM (RECHTS)	ARM (RH)			
46	60036800	4	VITE	VIS	SCHRAUBE	SCREW	TE 14 x 70 UNI 5737		
47	67009800	2	SUPPORTO	SUPPORT	TRAEGER	SUPPORT	UCF 207		
48	30123600	2	STAFFA	BRIDE	BUEGEL	BRACKET			
49	60018000	2	VITE	VIS	SCHRAUBE	SCREW	TE 16 x 1,5 x 45 UNI 5737		
50	60024100	2	VITE	VIS	SCHRAUBE	SCREW	TE 16 x 1,5 x 55 UNI 5738		
51	40187300	2	VITE	VIS	SCHRAUBE	SCREW			
52	62001500	2	DADO	ECROU	MUTTER	NUT	M 16 x 1,5 UNI 5589		
53	62003300	2	DADO	ECROU	MUTTER	NUT	M 16 x 1,5 UNI 5588		
54	62003300	2	DADO	ECROU	MUTTER	NUT	M 16 x 1,5 UNI 5588		
55	30145600		RASCHIETTO	GRATTOIR	ABSTREIFER	CLEANER			
56	45076200	1	RASTRELLIERA PACKER	RATELIER DU ROULEAU	ABSTREIFERGESTELL	ROLLER CLEANER RACK	230		
56	45076300	1	RASTRELLIERA PACKER	RATELIER DU ROULEAU	ABSTREIFERGESTELL	ROLLER CLEANER RACK	255		
56	45076400	1	RASTRELLIERA PACKER	RATELIER DU ROULEAU	ABSTREIFERGESTELL	ROLLER CLEANER RACK	305		
57	62002900		DADO	ECROU	MUTTER	NUT	M 8 x 1,25 UNI 5588		
58	61002900		RONDELLA	RONDELLE	SCHEIBE	WASHER	PIANA Ø 8 UNI 6592		
59	60004600		VITE	VIS	SCHRAUBE	SCREW	TE 8 x 1,25 x25 UNI 5739		



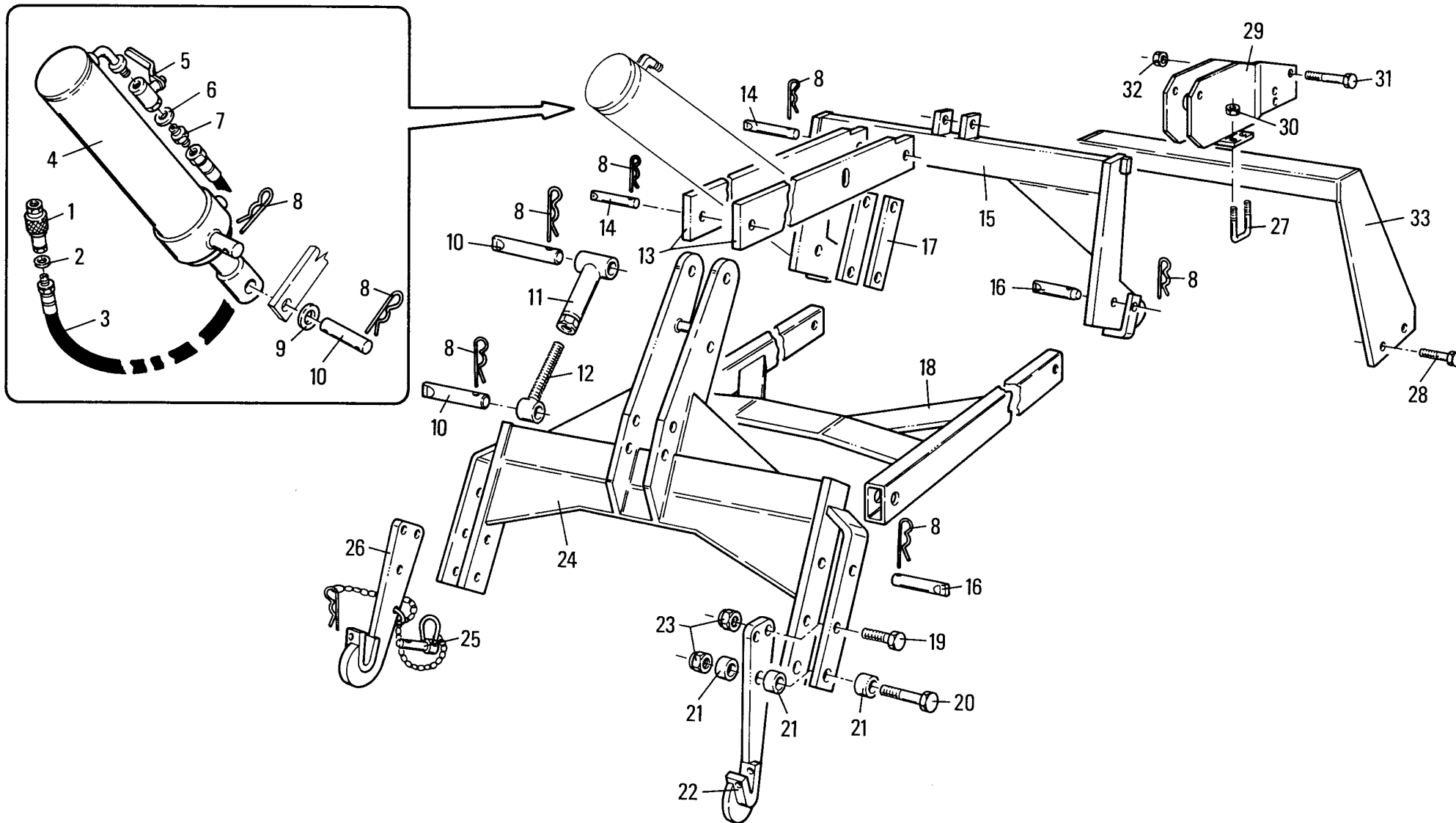




MURATORI MSC - MSCR

TAV. 10.0

POS.	N° CODICE	Q	DESCRIZIONE	DESIGNATION	BENENNUNG	DESCRIPTION	DESIGNAZIONE	Da matr.	Fino matr
								De nr. serie	Jusqu'au nr. serie
								Vom Seriennr.	Bis Seriennr.
								From serial nr.	Up to serial nr.
1	68043500	1	ATTACCO RAPIDO	ATTELAGE RAPIDE	SCHNELLKUPPLUNG	QUICKLINKAGE			
2	61005700	1	RONDELLA	RONDELLE	SCHEIBE	WASHER	RAME 1/2"		
3	68077700	1	TUBO	TUBE	ROHR	TUBE			
4	68077300	1	CILINDRO	CYLINDRE	ZYLINDER	CYLINDER			
5	68077600	1	RUBINETTO	ROBINET	HAHN	TAP			
6	61005600	2	RONDELLA	RONDELLE	SCHEIBE	WASHER	RAME 3/8"		
7	68077500	1	NIPPLO	RACCORD	NIPPEL	NIPPLE	3/8"		
8	64001000	13	COPIGLIA	COUPILLE	SPLINT	COTTER PIN	AR Ø 5		
9	61003900	2	RONDELLA	RONDELLE	SCHEIBE	WASHER	PIANA 50 x 27 UNI 6592		
10	38022500	3	PERNO	PIVOT	BOLZEN	PIN	L= 115		
11	40205900	1	AGGANCI	CROCHET	HAKEN	HOOK			
12	40205800	1	VITE	VIS	SCHRAUBE	SCREW			
13	30165300	2	TRAVE						
14	38022600	2	PERNO	PIVOT	BOLZEN	PIN	L= 155		
15	40212300	1	TELAIO	CHASSIS	RAHMEN	FRAME			
16	38022400	6	PERNO	PIVOT	BOLZEN	PIN	L= 85		
17	30157700	2	TIRANTE	TIRANT	STANGE	TIEROD			
18	40211800	1	TELAIO	CHASSIS	RAHMEN	FRAME			
19	60035000	2	VITE	VIS	SCHRAUBE	SCREW	TE 18 x 50 UNI 5739		
20	60034900	2	VITE	VIS	SCHRAUBE	SCREW	TE 18 x 120 UNI 5737		
21	32155200	6	BOCCOLA	DOUILLE	BUECHSE	BUSHING			
22	40212600	1	STAFFA DX	BRIDE (D)	BUEGEL(RECHTS)	BRACKET (RH)			
23	62011200	4	DADO	ECROU	MUTTER	NUT	M 18 x 2,5 AUTOBLOCC.		
24	40212800	1	TELAIO	CHASSIS	RAHMEN	FRAME			
25	68077400	2	PERNO	PIVOT	BOLZEN	PIN			
26	40212700	1	STAFFA SX	BRIDE (G)	BUEGEL (LINKS)	BRACKET (LH)			



ZAPPATRICI - ERPICI ROTANTI - TRINCIATRICI

MURATORIM 

41051 CASTELNUOVO RANGONE (MODENA) Italy
Via Pavarello, 21 - 21/A-B-C -P.O.Box 45 -
Tel. ++39 059 535919 - Telefax ++39 059 537259
<http://www.muratoriequip.it>
e-mail: info@muratoriequip.it