

# MURATORINI

The logo for Muratorini, featuring a stylized 'M' with a vertical bar on the right side containing a series of horizontal lines.

**TIPO-TYPE-TYP  
MT 21**

**CATALOGO RICAMBI  
Catalogue Pièces Detachées  
Ersatzteilkatalog  
Spare Parts Catalogue  
Catálogo Recambios**

**EDIZIONE 07/2007**



Per ordinare parti di ricambio specificare:

- tipo e matricola della macchina (apposti sulla macchina o sui documenti di acquisto);
- numero del riferimento del pezzo nel disegno (Pos.), numero della tavola (Tav.) e numero di codice.

**N.B.:** le indicazioni destro o sinistro vengono date guardando la macchina da dietro.

*Pour les commandes de pièces de rechange veuillez spécifier:*

- *type et numéro de série de la machine (indiqués sur la machine et sur le bon d'achat);*
- *numéro de référence du pièce sur le plan (Pos.), numéro du plan (Tav.) et numéro de code (codice).*

**N.B.:** *les indications droite ou gauche sont données en regardant la machine par derrière.*

*Zum Bestellen von Ersatzteilen folgendes angeben:*

- *Typ und Serien-Nr. der Maschine (zu finden auf der Maschine oder der Einkaufspapieren);*
- *Bezug-Nr. des Ersatzteils auf der Zeichnung (Pos.), Zeichnungsnummer (Tav.) und Kodenummer (codice).*

**N.B.:** *Die Angaben rechts und links verstehen sich so, dass man hinter der Maschine steht.*

When ordering spare parts specify:

- machine type and serial number (found on the machine or on the purchasing documents);
- reference number of the part on the relative drawing (Pos.), number of the drawing (Tav.) and part number (codice).

**N.B.:** right-hand or left-hand indications are made by viewing the machine from the rear.

**TAV. 1.0**

GRUPPO TELAIO  
ENSEMBLE CHASSIS  
SATZ FÜR RAHMEN  
KIT FOR FRAME

**TAV. 2.0**

GRUPPO TRASMISSIONE ROTORE  
ENSEMBLE TRANSMISSION ROTOR  
SATZ FÜR DEN ROTARONTRIEB  
KIT FOR THE ROTOR TRANSMISSION

**TAV.3.0**

GRUPPO RULLO POSTERIORE  
ENSEMBLE ROULEAU ARRIERE  
SATZ HINTERE WALZE  
KIT REAR ROLLER

**TAV. 4.0**

GRUPPO MOLTIPLICATORE - 540 RPM / 1000 RPM  
ENSEMBLE MULTIPLICATEUR - 540 RPM / 1000 RPM  
SATZ FÜR GETRIEBE - 540 UPM / 1000 UPM  
KIT FOR GEAR BOX - 540 RPM / 1000 RPM

**TAV. 5.0**

GRUPPO MOLTIPLICATORE - 2000 RPM  
ENSEMBLE MULTIPLICATEUR - 2000 RPM  
SATZ FÜR GETRIEBE - 2000 UPM  
KIT FOR GEAR BOX - 2000 RPM

**TAV. 6.0**

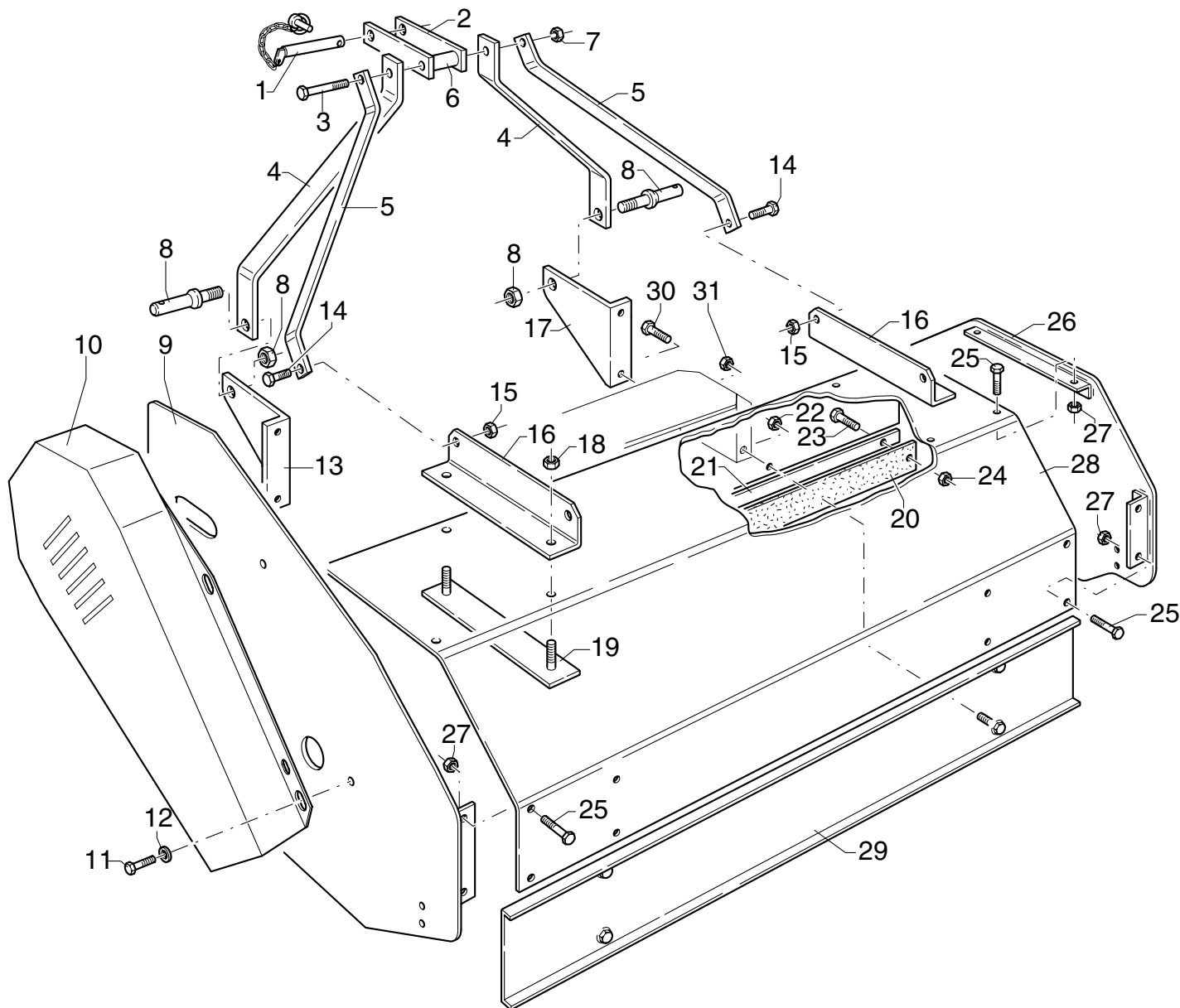
ACCESSORI A COMPLETAMENTO  
OPTIONS D'ACHEVEMENT  
ZUBEHÖRE ZUR ERGANZUNG DER MASCHINE  
CHOICE OF EQUIPMENT COMPLETING MACHINE

**TAV. 7.0**

GRUPPO RULLO ANTERIORE  
ENSEMBLE ROULEAU AVANT  
SATZ VORDERE WALZE  
KIT FRONT ROLLER

**TAV. 8.0**

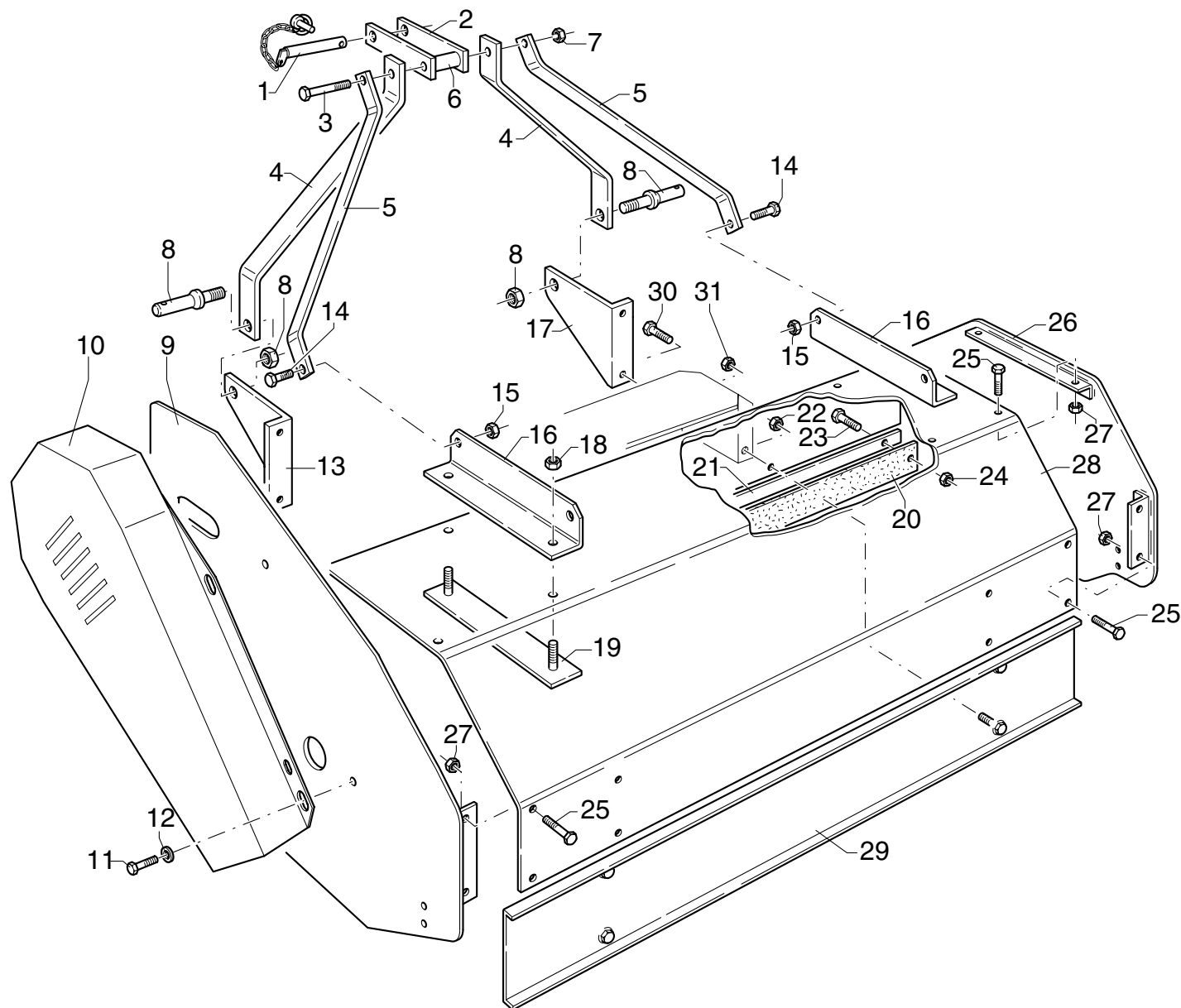
ATTACCO FRONTALE RAPIDO  
ATTELAGE FRONTAL RAPIDE  
FRONTKUPPELDREIECK  
QUICK FRONT LINKAGE



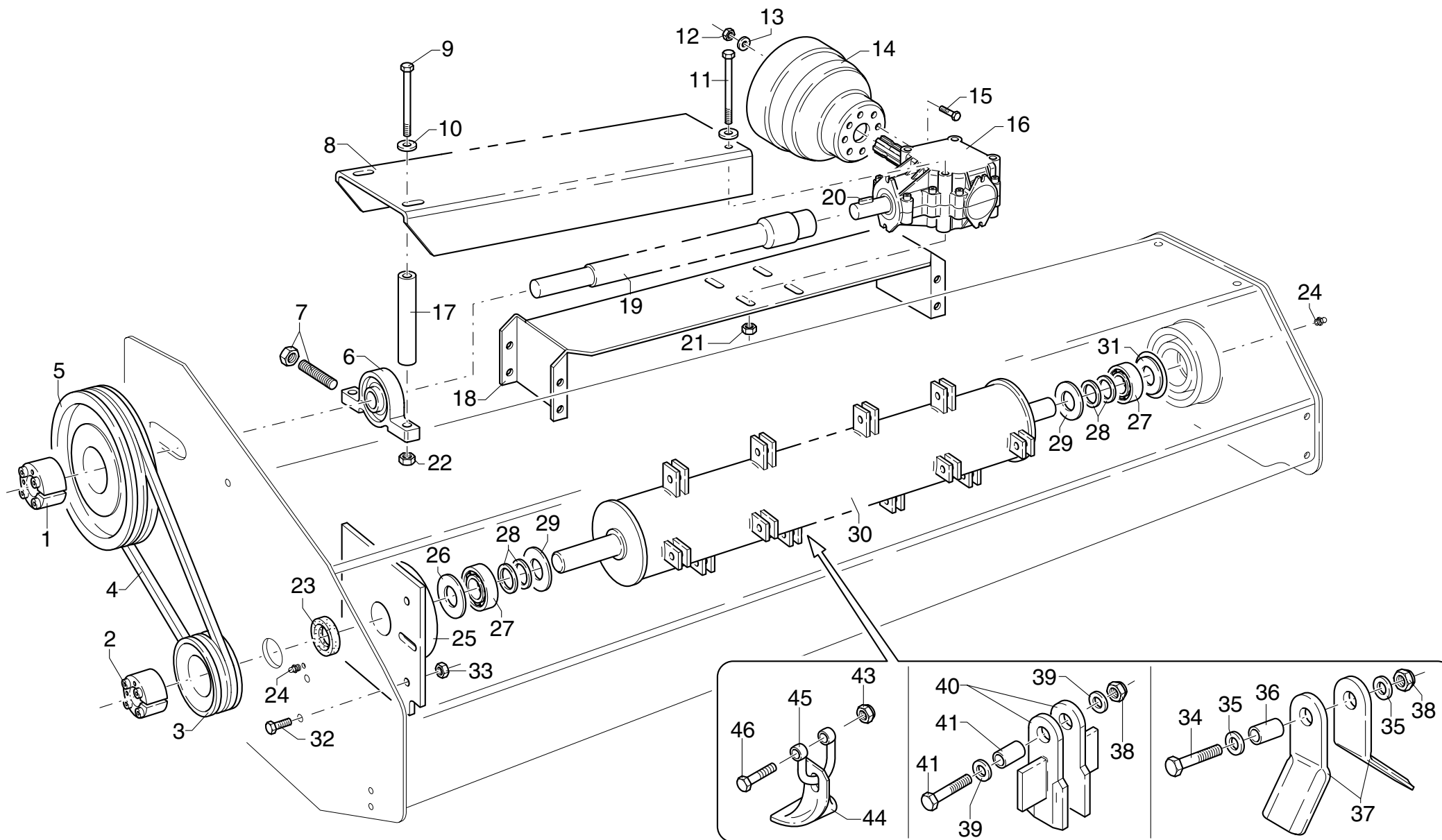
## MURATORI MT 21

TAV. 1.0

POS.	N°	CODICE Q.	DESCRIZIONE	DESIGNATION	BENENNUNG	DESCRIPTION	DESIGNAZIONE	Da matr. De nr. serie Vom Seriennr. From serial nr.	Fino matr. Jusqu'au nr. serie Bis Seriennr. Up to serial nr.
1	68062000	1	PERNO	PIVOT	BOLZEN	PIN			
2	40237800	1	ATTACCO	ATTACHE	ANSCHLUSS	ATTACHMENT			
3	60033000	1	VITE	VIS	SCHRAUBE	SCREW	TE 12 x 130 UNI 5737		
4	30178800	2	TIRANTE	TIRANT	STANGE	TIEROD			
5	30187300	2	TIRANTE	TIRANT	STANGE	TIEROD			
6	32021400	1	BOCCOLA	DOUILLE	BUECHSE	BUSHING			
7	62010600	1	DADO	ECROU	MUTTER	NUT	M 12 x 1,75 AUTOBLOCC.		
8	68062500	2	PERNO	PIVOT	BOLZEN	PIN			
9	40235000	1	PIASTRA CARTER	PLAQUE	SEITENWAND	SIDE FRAME			
10	40227700	1	COPERCHIO	COUVERCLE	DECKEL	COVER			
11	60022800	4	VITE	VIS	SPINDEL	SCREW	TE 8 x 20 UNI 5739		
12	61006200	4	RONDELLA	RONDELLE	SCHEIBE	WASHER	PIANA Øi 9 Øe24 sp.1,5		
13	39251500	1	STAFFA SX	BRIDE (G)	BUEGEL (LINKS)	BRACKET (LH)			
14	60023000	2	VITE	VIS	SCHRAUBE	SCREW	TE 12 x 30 UNI 5737		
15	62010600	2	DADO	ECROU	MUTTER	NUT	M 12 x 1,75 AUTOBLOCC.		
16	39251700	2	STAFFA	BRIDE	BUEGEL	BRACKET			
17	39251600	1	STAFFA DX	BRIDE (D)	BUEGEL(RECHTS)	BRACKET (RH)			
18	62010600	4	DADO	ECROU	MUTTER	NUT	M 12 x 1,75 AUTOBLOCC.		
19	40231700	2	CONTROFLANGIA	CONTRE-BRIDE	GEGENFLANSCH	COUNTERFLANGE			
20	68067800	1	BANDELLA	BANDE	BAND	STRAP	105		
20	68067900	1	BANDELLA	BANDE	BAND	STRAP	130		
20	68068000	1	BANDELLA	BANDE	BAND	STRAP	155		
21	30125500	1	PIATTO	PLAQUE	PLATTE	DISC	105		
21	30125600	1	PIATTO	PLAQUE	PLATTE	DISC	130		
21	30125700	1	PIATTO	PLAQUE	PLATTE	DISC	155		
22	62010600	8	DADO	ECROU	MUTTER	NUT	M 12 x 1,75 AUTOBLOCC.		



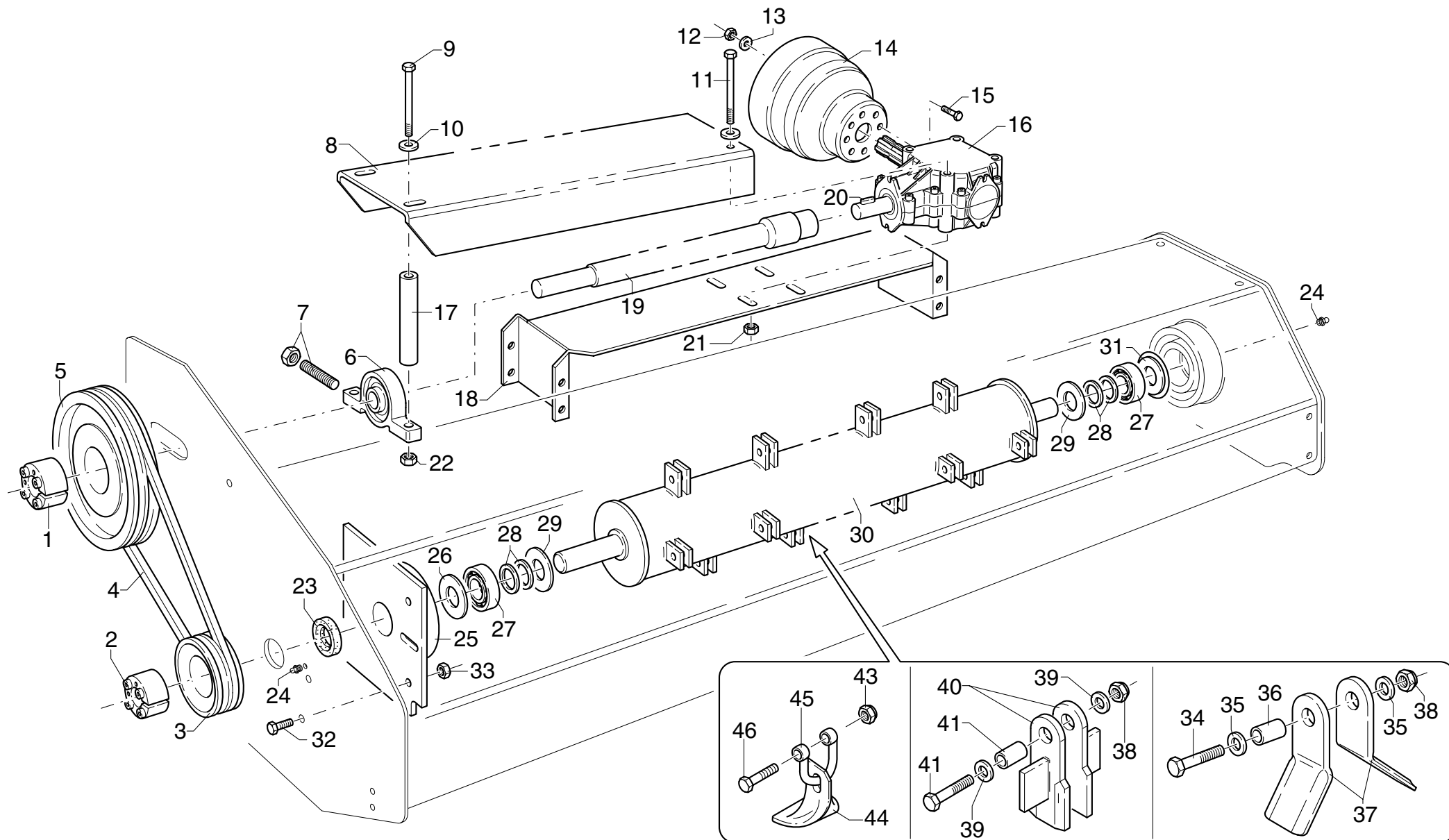




## MURATORI MT 21

TAV. 2.0

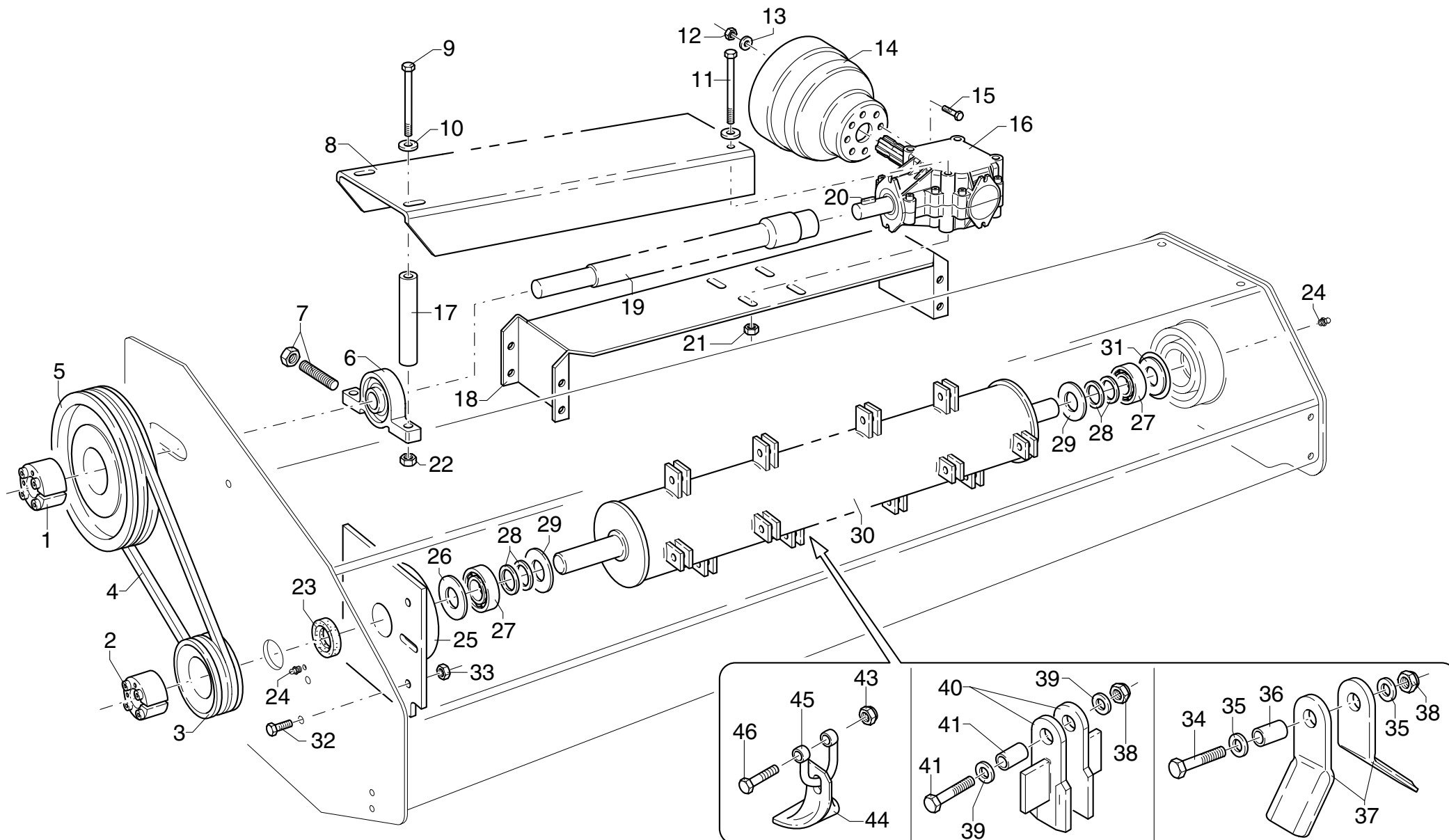
POS.	N°	CODICE Q.	DESCRIZIONE	DESIGNATION	BENENNUNG	DESCRIPTION	DESIGNAZIONE	Da matr. De nr. serie Vom Seriennr. From serial nr.	Fino matr. Jusqu'au nr. serie Bis Seriennr. Up to serial nr.
1	68058900	1	CALETTATORE	DOUILLE DE SERRAGE	SPANNBUCHSE	LOCKING DEVICE	Øi 25 Øe 55		
2	68059000	1	CALETTATORE	DOUILLE DE SERRAGE	SPANNBUCHSE	LOCKING DEVICE	Øi 30 Øe 55		
3	68058800	1	PULEGGIA	POULIE	RIEMENSCHLEIBE	PULLEY	Ø 100 2 SPA		
4	68085200	2	CINGHIA	COURROIE	KEILRIEMEN	BELT	A 45		
4	68085300	2	CINGHIA	COURROIE	KEILRIEMEN	BELT	A 38 1/2 1000 RPM-2000 RPM		
5	68058700	1	PULEGGIA	POULIE	RIEMENSCHLEIBE	PULLEY	Ø 225 2 SPA		
5	68068500	1	PULEGGIA	POULIE	RIEMENSCHLEIBE	PULLEY	Ø 120 2 SPA 1000 RPM-2000 RPM		
6	67012600	1	SUPPORTO	SUPPORT	HALTERUNG	SUPPORT	UCP 205		
7	40161400	1	TIRANTE	TIRANT	STANGE	TIEROD			
8	40265801	1	PROTEZIONE	PROTECTION	SCHUTZ	GUARD	105		
8	40265901	1	PROTEZIONE	PROTECTION	SCHUTZ	GUARD	130		
8	40266001	1	PROTEZIONE	PROTECTION	SCHUTZ	GUARD	155		
9	60025700	2	VITE	VIS	SCHRAUBE	SCREW	TE 12 x 110 UNI 5739		
10	61000900	4	RONDELLA	RONDELLE	SCHEIBE	WASHER	PIANA Ø12 UNI 6592		
11	60020700	4	VITE	VIS	SCHRAUBE	SCREW	TE 10 x 120 UNI 5737		
12	62008200	2	DADO	ECROU	MUTTER	NUT	M6 MEDIO UNI 5588		
13	61006000	2	RONDELLA	RONDELLE	SCHEIBE	WASHER			
14	68045200	1	PROTEZIONE	PROTECTION	SCHUTZ	GUARD			
15	60024800	2	VITE	VIS	SCHRAUBE	SCREW	TE 6 x 16 UNI 5739		
16	46034200	1	MOLTIPLICATORE ORARIO	BOITIER (ROT. STANDARD)	RECHTSDR. GETRIEBE	CLOCKWISE GEAR BOX	540 RPM-1000 RPM		
16	46035000	1	MOLTIPLICAT. ANTIORARIO	BOITIER (ROT. INVERSE)	LINKSDR. GETRIEBE	COUNTERCL. GEAR BOX	540 RPM-1000 RPM		
16	46034500	1	MOLTIPLICATORE	MULTIPLIQUEUR	GETRIEBE	GEAR BOX	2000 RPM		
16	46035100	1	MOLTIPLICAT. ANTIORARIO	BOITIER (ROT. INVERSE)	LINKSDR. GETRIEBE	COUNTERCL. GEAR BOX	2000 RPM		
17	32175700	2	DISTANZIALE	ENTRETOISE	DISTANZSTUECK	SPACER			
18	40234900	1	SUPPORTO	SUPPORT	HALTERUNG	SUPPORT			
19	40228501	1	PROLUNGA	RALLONGE	VERLAENGERUNGSROHR	EXTENSION	105		



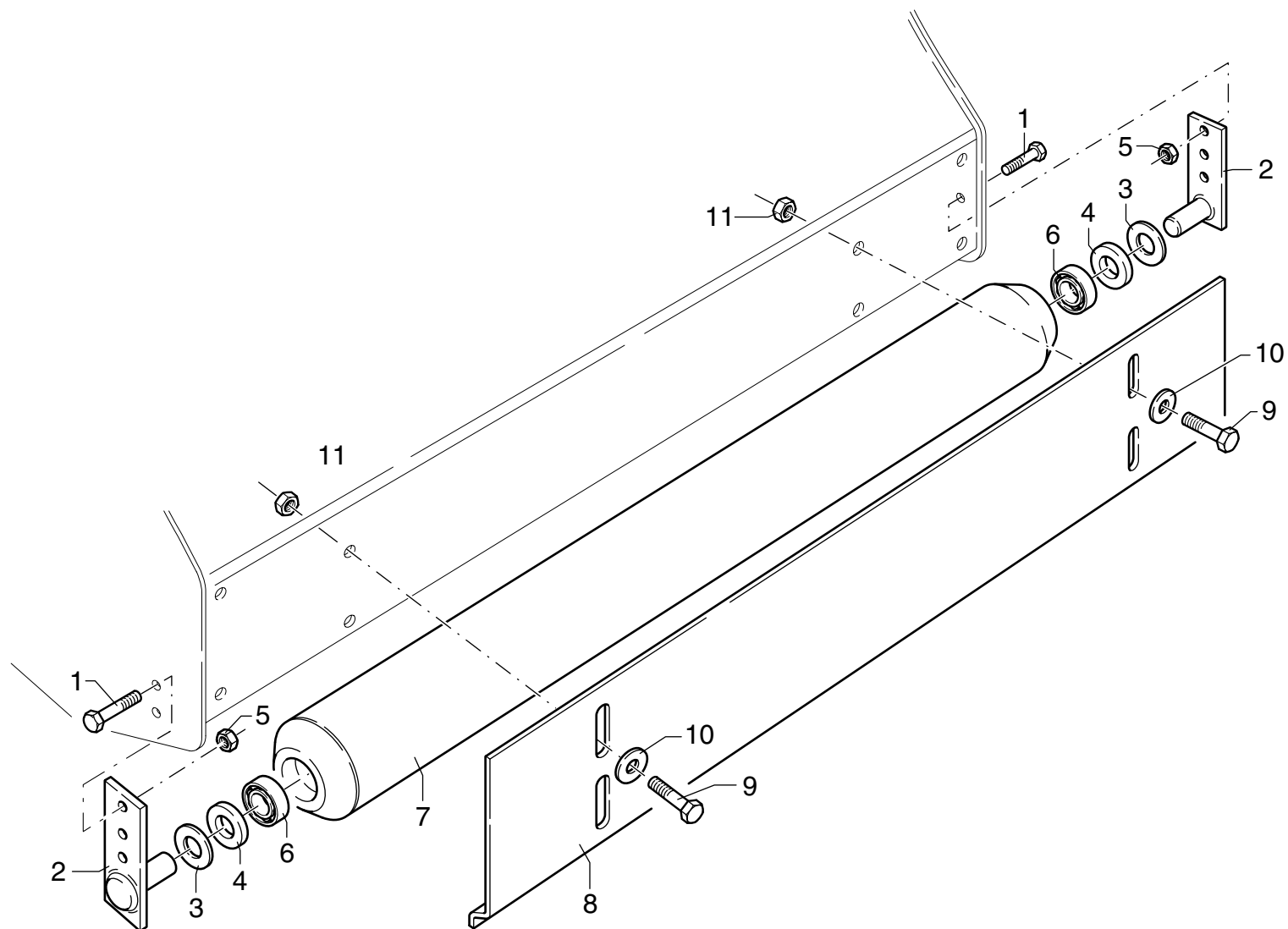
## MURATORI MT 21

## TAV. 2.0

POS.	N°	CODICE Q.	DESCRIZIONE	DESIGNATION	BENENNUNG	DESCRIPTION	DESIGNAZIONE	Da matr. De nr. serie Vom Seriennr. From serial nr.	Fino matr. Jusqu'au nr. serie Bis Seriennr. Up to serial nr.
19	40228601	1	PROLUNGA	RALLONGE	VERLAENGERUNGSROHR	EXTENSION	130		
19	40228701	1	PROLUNGA	RALLONGE	VERLAENGERUNGSROHR	EXTENSION	155		
20	65000900	1	LINGUETTA	CLAVETTE	FEDER	KEY	8 x 7 x 40		
21	62010400	4	DADO	ECROU	MUTTER	NUT	M 10 x 1,5 AUTOBLOCC.		
22	62010600	2	DADO	ECROU	MUTTER	NUT	M 12 x 1,75 AUTOBLOCC.		
23	66014000	1	ANELLO TENUTA	JOINT D'ETANCHEITE	DICHTUNGSRING	JUNT RING	30 x 40 x 4		
24	64000200	2	INGRASSATORE	GRAISSEUR	SCHMIERNIPPEL	GREASE FITTING	M6 x 1		
25	40228000	1	SUPPORTO SX	SUPPORT (G)	HALTER (LINKS)	SUPPORT (LH)			
26	32068000	1	SPESSORE	EPAISSEUR	DISTANZRING	SPACER			
27	67012900	2	CUSCINETTO	ROULEMENT	LAGER	BEARING	1306		
28	68068800		SPESSORE	EPAISSEUR	DISTANZRING	SPACER	42 x 30 x 1		
29	39091100	2	DISCO	DISQUE	SCHEIBE	DISC			
30	42045400	1	ROTORE	ROTOR	ROTOR	ROTOR	105		
30	42045500	1	ROTORE	ROTOR	ROTOR	ROTOR	130		
30	42045600	1	ROTORE	ROTOR	ROTOR	ROTOR	155		
31	32171000	1	SPESSORE	EPAISSEUR	DISTANZRING	SPACER			
32	60001400	1	VITE	VIS	SCHRAUBE	SCREW	TE 12 x 25 UNI 5739		
33	62010600	4	DADO	ECROU	MUTTER	NUT	M 12 x 1,75 AUTOBLOCC.		
34	60012900	4	VITE	VIS	SCHRAUBE	SCREW	TE 8 x 45 UNI 5737		
35	61002900		RONDELLA	RONDELLE	SCHEIBE	WASHER	PIANA Ø8 UNI 6592		
36	31042800		BOCCOLA	DOUILLE	BUECHSE	BUSHING			
37	12010200		COLTELLO	COUTEAU	MESSER	KNIFE			
38	62010200		DADO	ECROU	MUTTER	NUT	M 8 AUTOBLOCC.		
39	61006200		RONDELLA	RONDELLE	SCHEIBE	WASHER	PIANA Øi 9 Øe 24		
40	12016600		COLTELLO "VERTICUT"	COUTEAU "VERTICUT"	"VERTICUT" MESSER	"VERTICUT" KNIFE			
41	31067500		BOCCOLA	DOUILLE	BUECHSE	BUSHING			



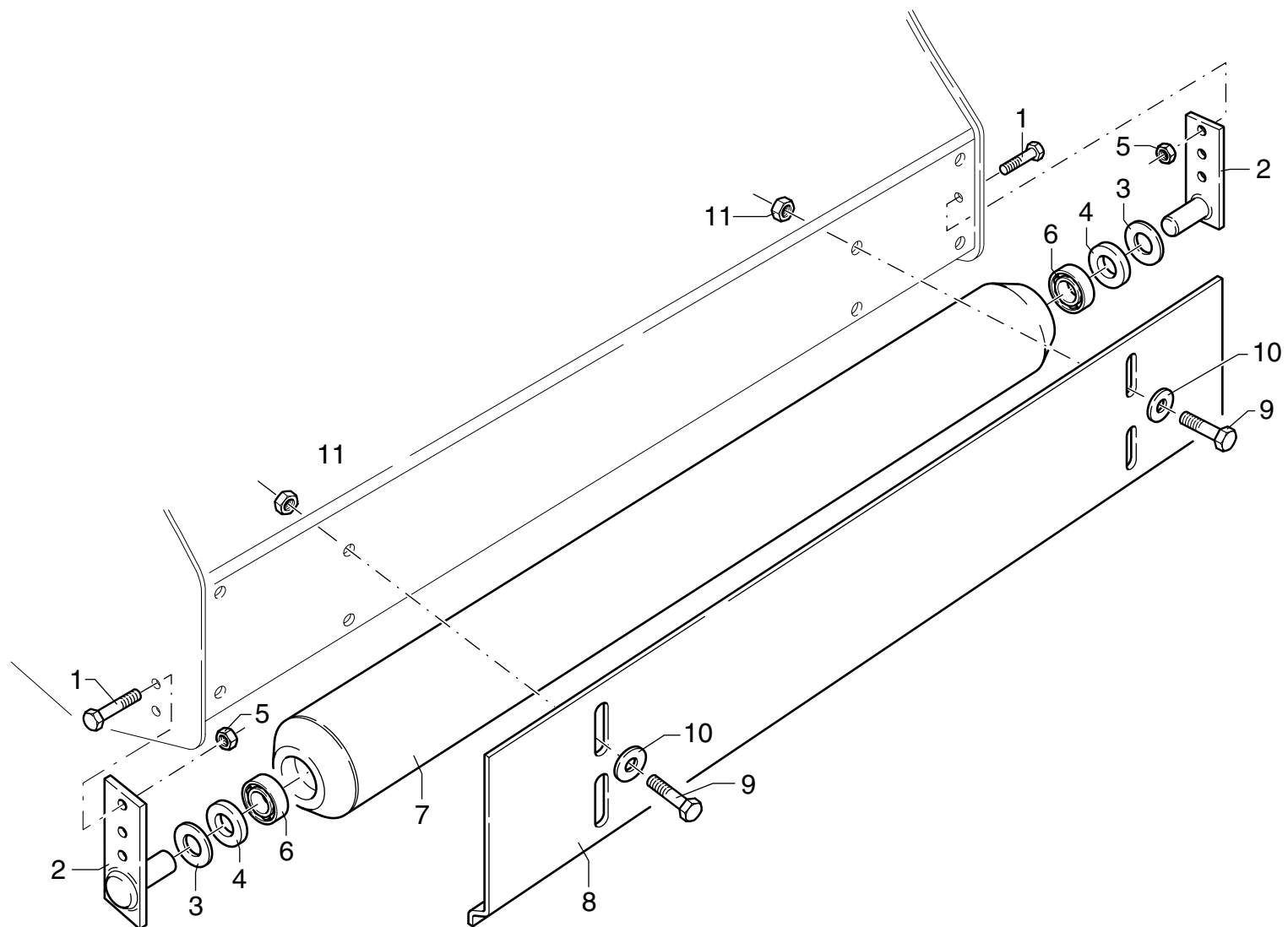




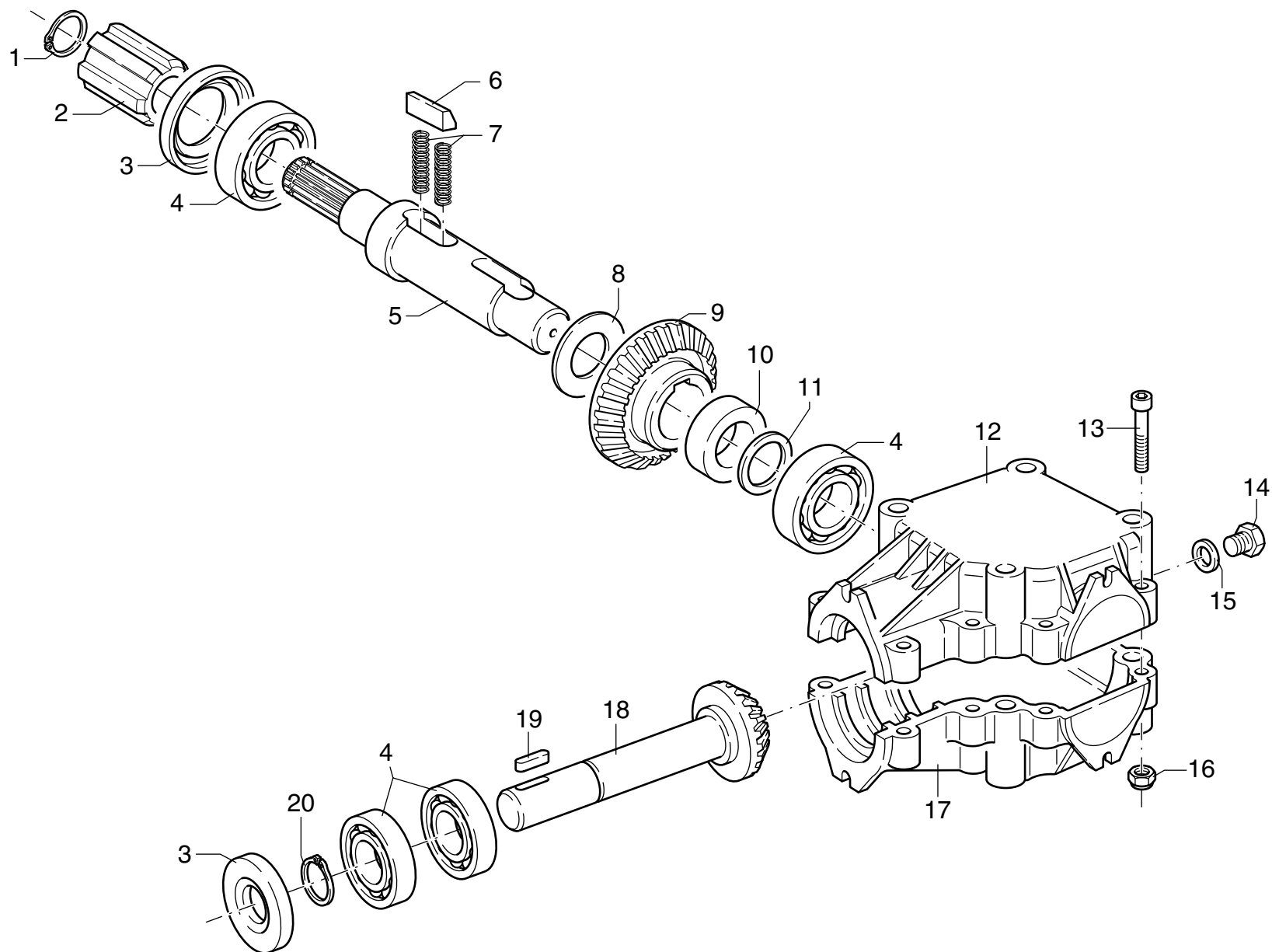
## MURATORI MT 21

## TAV. 3.0

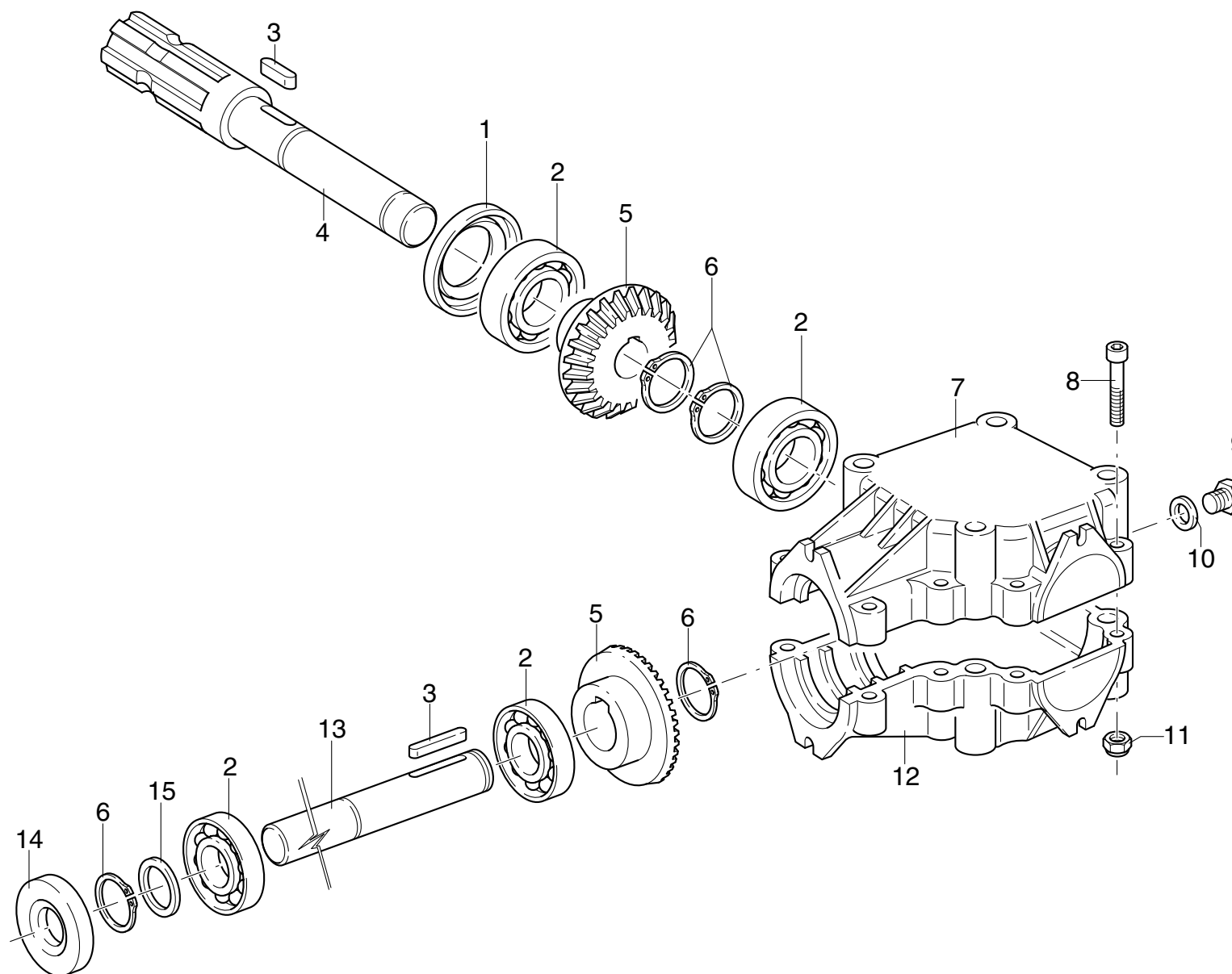
POS.	N°	CODICE	Q.	DESCRIZIONE	DESIGNATION	BENENNUNG	DESCRIPTION	DESIGNAZIONE	Da matr. De nr. serie Vom Seriennr. From serial nr.	Fino matr. Jusqu'au nr. serie Bis Seriennr. Up to serial nr.
1	60002300	4	VITE	VIS	SCHRAUBE	SCREW	TE 10 x 25 UNI 5739			
2	40228100	2	SUPPORTO	SUPPORT	HALTERUNG	SUPPORT				
3	39091200	2	DISCO	DISQUE	SCHEIBE	DISC	Øi 25 Øe 50 SP 3 - 105		88232	
3	39091200	2	DISCO	DISQUE	SCHEIBE	DISC	Øi 25 Øe 50 SP 3 - 130		89052	
3	39091200	2	DISCO	DISQUE	SCHEIBE	DISC	Øi 25 Øe 50 SP 3 - 155		87684	
3	39200500	2	DISCO	DISQUE	SCHEIBE	DISC	Øi 25 Øe 60 SP 3 - 105	88233		
3	39200500	2	DISCO	DISQUE	SCHEIBE	DISC	Øi 25 Øe 60 SP 3 - 130	89053		
3	39200500	2	DISCO	DISQUE	SCHEIBE	DISC	Øi 25 Øe 60 SP 3 - 155	87685		
4	68028400		SPESSORE	EPAISSEUR	DISTANZRING	SPACER	35 x 25 x 1			
5	62010400	4	DADO	ECROU	MUTTER	NUT	M 10 x 1,5 AUTOBLOCC.			
6	67008300	1	CUSCINETTO	ROULEMENT	LAGER	BEARING	6205 2 RS - 105		88232	
6	67008300	1	CUSCINETTO	ROULEMENT	LAGER	BEARING	6205 2 RS - 130		89052	
6	67008300	1	CUSCINETTO	ROULEMENT	LAGER	BEARING	6205 2 RS - 155		87684	
6	67017500	1	CUSCINETTO	ROULEMENT	LAGER	BEARING	6305 2 RS - 105	88233		
6	67017500	1	CUSCINETTO	ROULEMENT	LAGER	BEARING	6305 2 RS - 130	89053		
6	67017500	1	CUSCINETTO	ROULEMENT	LAGER	BEARING	6305 2 RS - 155	87685		
7	42066700	1	RULLO LIVELLATORE	ROULEAU ARRIERE	HINTERESTUETZWALZE	REAR ROLLER	105		88232	
7	42066800	1	RULLO LIVELLATORE	ROULEAU ARRIERE	HINTERESTUETZWALZE	REAR ROLLER	130		89052	
7	42066900	1	RULLO LIVELLATORE	ROULEAU ARRIERE	HINTERESTUETZWALZE	REAR ROLLER	155		87684	
7	42071000	1	RULLO LIVELLATORE	ROULEAU ARRIERE	HINTERESTUETZWALZE	REAR ROLLER	105	88233		
7	42071100	1	RULLO LIVELLATORE	ROULEAU ARRIERE	HINTERESTUETZWALZE	REAR ROLLER	130	89053		
7	42071200	1	RULLO LIVELLATORE	ROULEAU ARRIERE	HINTERESTUETZWALZE	REAR ROLLER	155	87685		
8	39252800	1	RASCHIARULLO	GRATTOIR	ABSTREIFER	SCRAPER	105			
8	39252900	1	RASCHIARULLO	GRATTOIR	ABSTREIFER	SCRAPER	130			
8	39253000	1	RASCHIARULLO	GRATTOIR	ABSTREIFER	SCRAPER	155			
9	60020400		VITE	VIS	SCHRAUBE	SCREW	TE 12 x 25 UNI 5739			



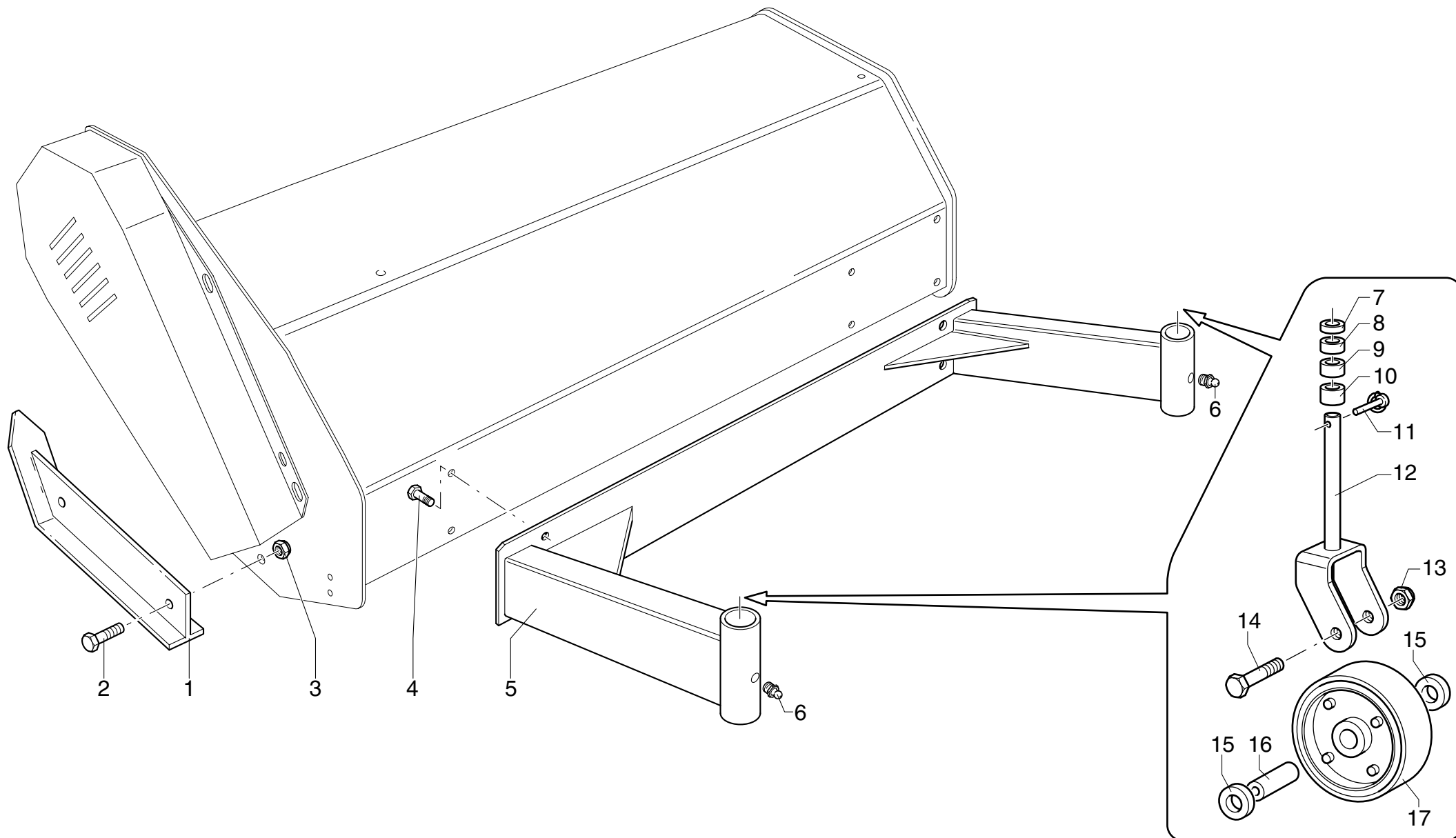




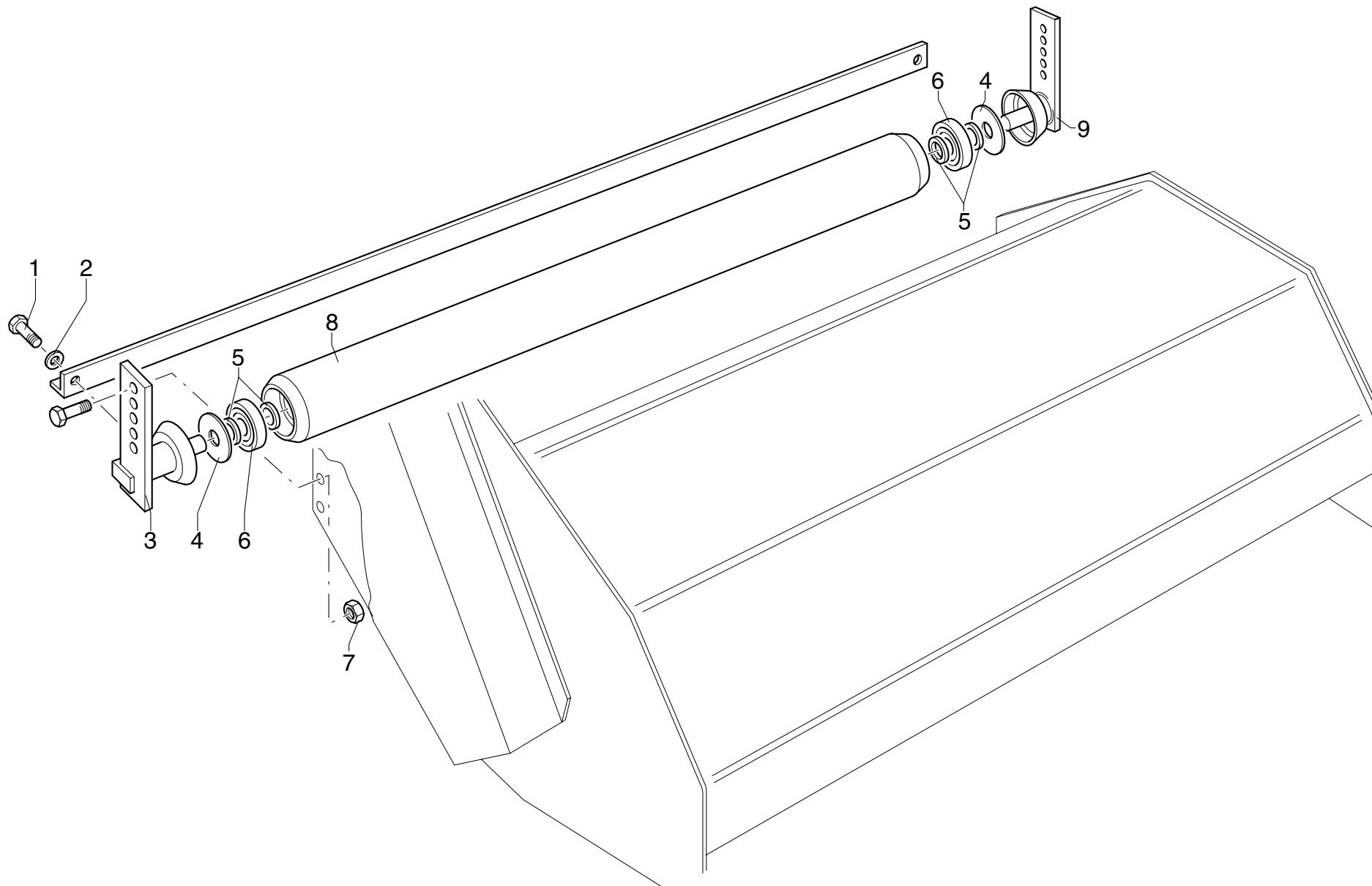




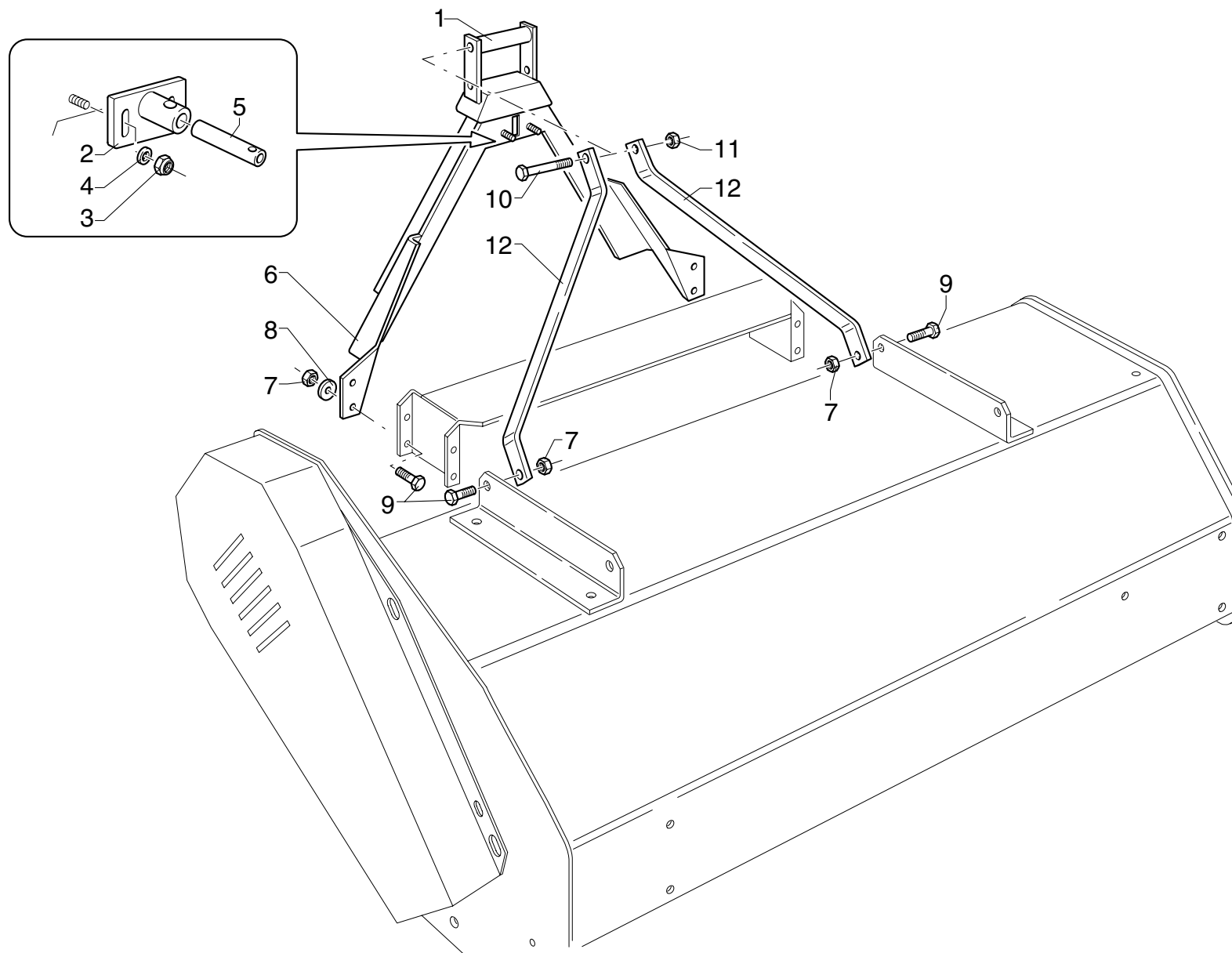


















ZAPPATRICI - ERPICI ROTANTI - TRINCIATRICI

**MURATORIM** 

41051 CASTELNUOVO RANGONE (MODENA) Italy  
Via Pavarello, 21 - 21/A-B-C -P.O.Box 45 -  
Tel. ++39 059 535919 - Telefax ++39 059 537259  
<http://www.muratoriequip.it>  
e-mail: [info@muratoriequip.it](mailto:info@muratoriequip.it)