



MURATORI

**TIPO-TYPE-TYP
MRP**

CATALOGO RICAMBI
Catalogue Pièces Detachées
Ersatzteilkatalog
Spare Parts Catalogue
Catálogo Recambios

EDIZIONE 05/2018



**NORME PER LE ORDINAZIONI - COMMANDES/NORMES - BESTELLNORMEN - HOW TO ORDER
INDICE DELLE TAVOLE - INDEX DES TABLES - TAFELVERZEICHNIS - TABLES INDEX**

MRP

Per ordinare parti di ricambio specificare:

- tipo e matricola della macchina (apposti sulla macchina o sui documenti di acquisto);
- numero del riferimento del pezzo nel disegno (Pos.), numero della tavola (Tav.) e numero di codice

N.B.: le indicazioni destro o sinistro vengono date guardando la macchina da dietro.

Pour les commandes de pièces de rechange veuillez spécifier:

- *type et numéro de série de la machine (indiqués sur la machine et sur le bon d'achat);*
- *numéro de référence du pièce sur le plan (Pos.), numéro du plan (Tav.) et numero de code (codice)*

N.B.: *les indications droite ou gauche sont données en regardant la machine par derrière.*

Zum Bestellen von Ersatzteilen folgendes angeben:

- *Typ und Serien-Nr. der Maschine (zu finden auf der Maschine oder der Einkaufspapieren);*
- *Bezug-Nr. des Ersatzteils auf der Zeichnung (Pos.), Zeichnungsnummer (Tav.) und Kodenummer (codice)*

N.B.: *Die Angaben rechts und links verstehen sich so, dass man hinter der Maschine steht.*

When ordering spare parts specify:

- machine type and serial number (found on the machine or on the purchasing documents);
- reference number of the part on the relative drawing (Pos.) number of the drawing (Tav.) and part number (codice)

N.B.: right-hand or left-hand indications are made by viewing the machine from the rear.

TAV. 1.0

GRUPPO TELAIO
ENSEMBLE CHASSIS
SATZ FÜR RAHMEN
KIT FOR FRAME

TAV. 2.0

TRASMISSIONE ROTORI
ROTORS TRANSMISSION
ROTOREN ANTRIEB
TRANSMISSION ROTORS

TAV. 3.0

GRUPPO MOLTIPLICATORE
ENSEMBLE MULTIPLICATEUR
SATZ FÜR GETRIEBE
KIT FOR GEAR BOX

TAV. 4.0

INGRASSATORI ESTERNI
GRAISSAGE CENTRALISE
SAMMELSCHMIERUNG
GREASE EXTENSIONS

TAV. 5.0

RUOTINO ANTISCALPO
ROULEAU ANTICHOE
GEGENSTOSSIGE ROLLE
ANTISCALPING ROLLER

TAV. 6.0

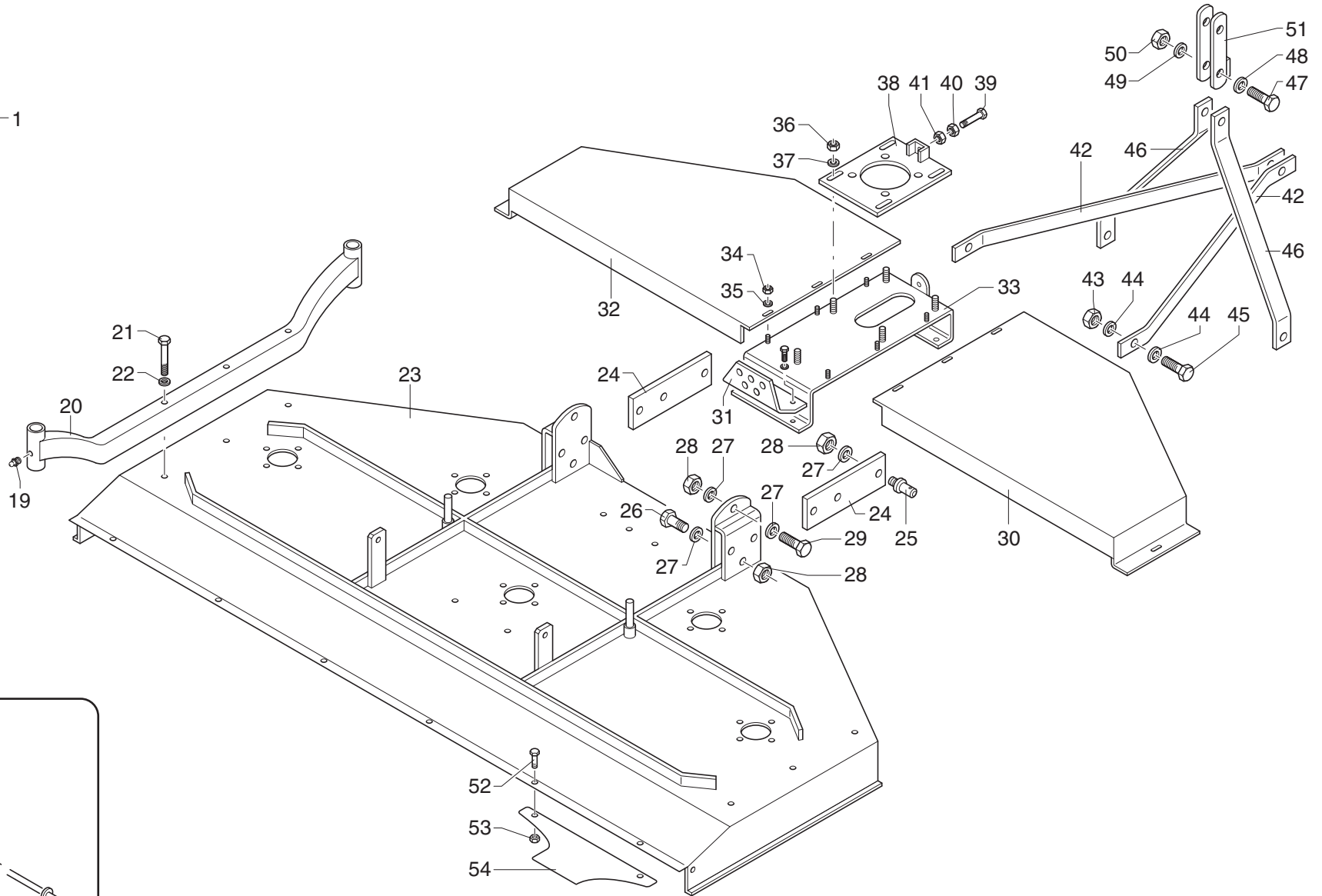
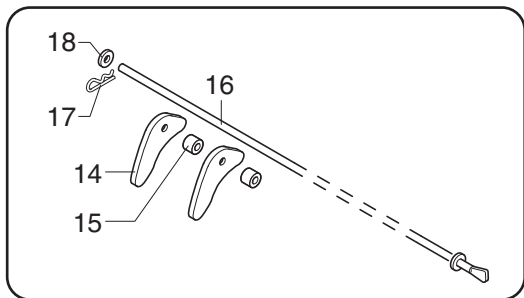
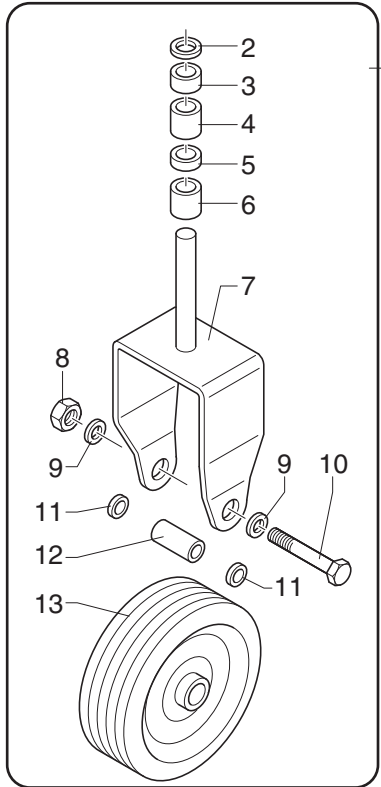
VERSIONE "MULCHING"
VERSION "MULCHING"
"MULCHING" VERSION
"MULCHING" VERSION

TAV. 7.0

RUOTE PNEUMATICHE
ROUES PNEUMATIQUES
PNEURÄDER
TYRE WHEELS

TAV. 8.0

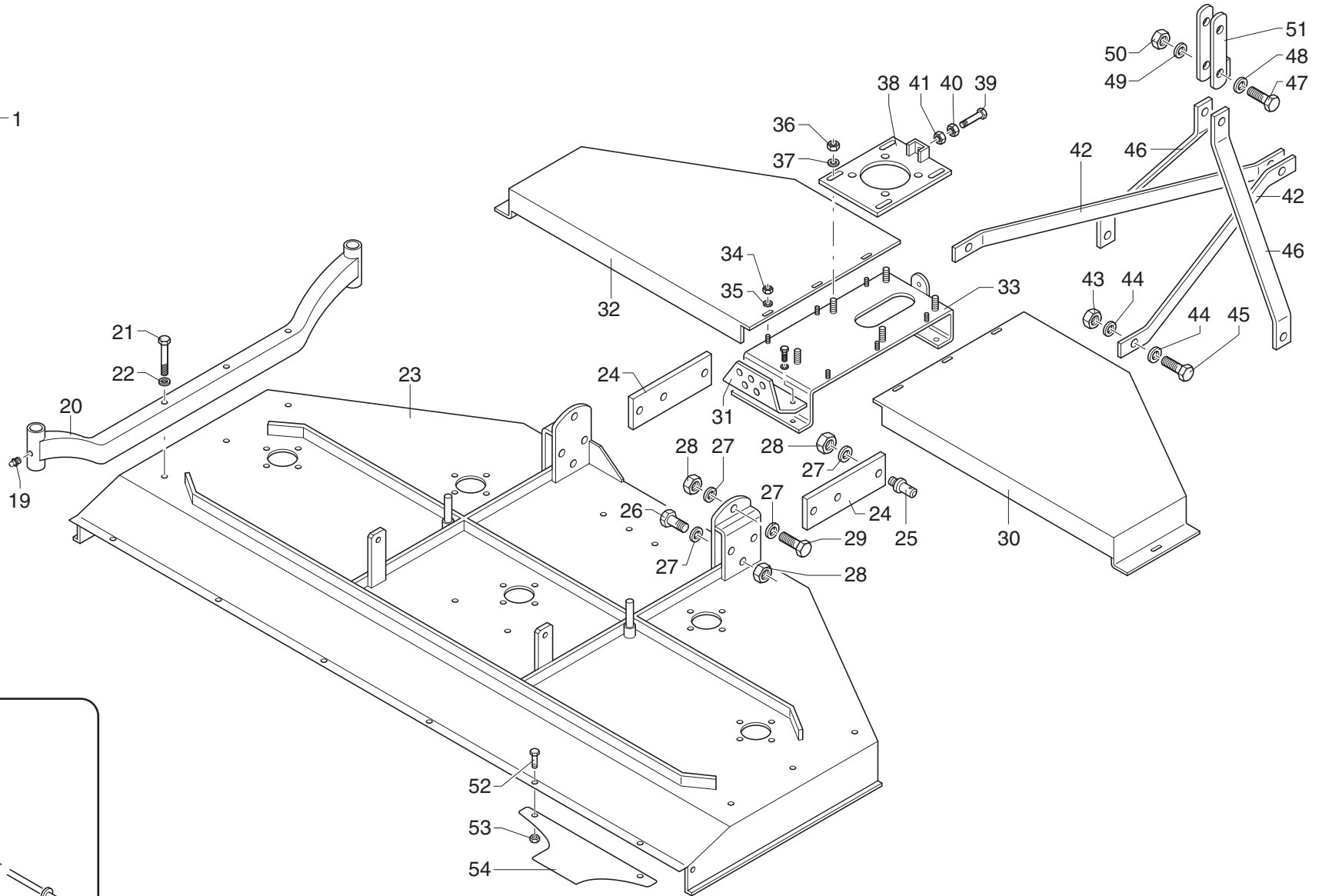
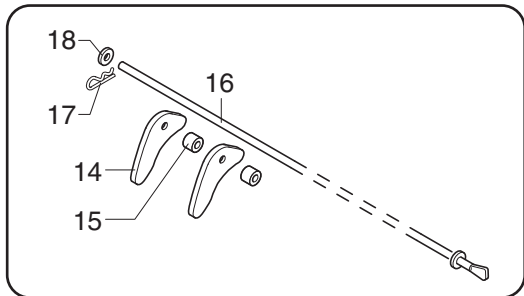
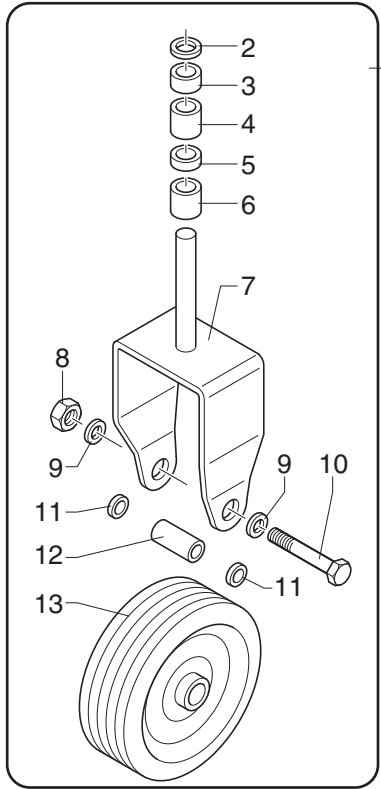
ALBERO CARDANICO COMPLETO
ARBRE A JOINTS DE CARDAN
KARDANWELLE
PTO SHAFT



MURATORI MRP

TAV. 1.0

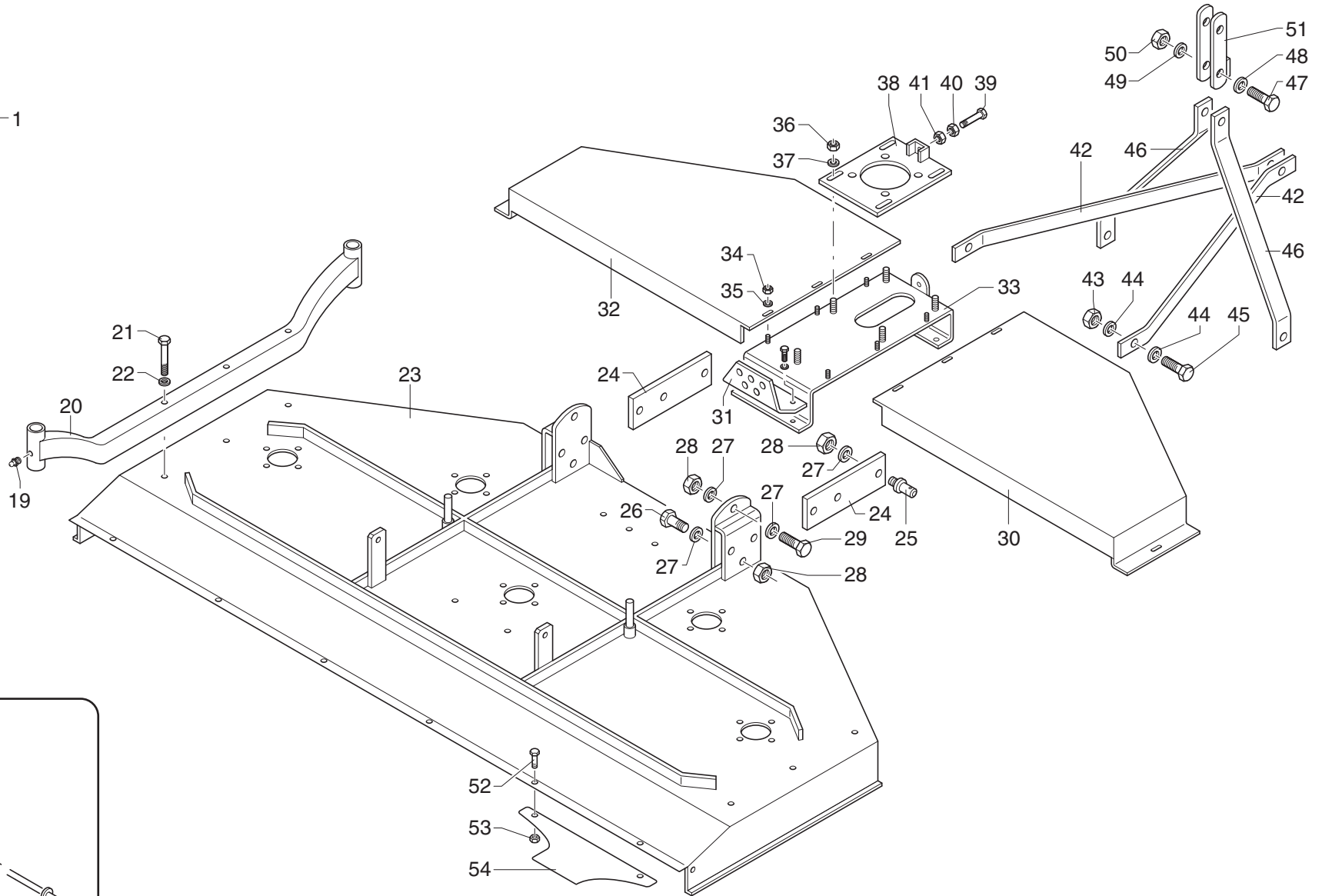
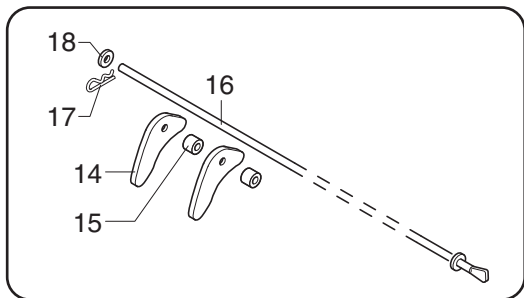
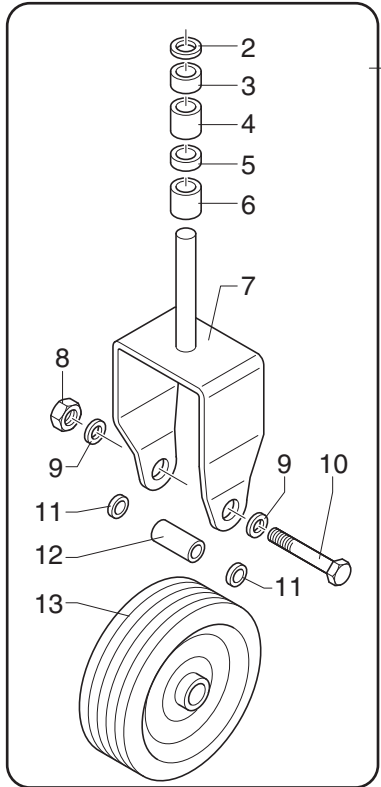
POS.	N° CODICE	Q.	DESCRIZIONE	DESIGNATION	BENENNUNG	DESCRIPTION	DESIGNAZIONE	Da matr. De nr. serie Vom Seriennr. From serial nr.	Fino matr. Jusqu'au nr. serie Bis Seriennr. Up to serial nr.
1	45142800		RUOTA COMPLETA	ENSEMBLE ROUE	SATZ RAD	WHEEL ASSEMBLY			
2	32187200	1	SPESSORE	EPAISSEUR	BEILAGERING	SPACER	H = 2		
3	32174600	1	SPESSORE	EPAISSEUR	BEILAGERING	SPACER	H = 6		
4	32174700	1	SPESSORE	EPAISSEUR	BEILAGERING	SPACER	H = 12		
5	32174900	1	SPESSORE	EPAISSEUR	BEILAGERING	SPACER	H = 24		
6	32175000	1	SPESSORE	EPAISSEUR	BEILAGERING	SPACER	H = 32		
7	68099000	1	FORCELLA	FOURCHE	GABEL	YOKE			
8	62010600	1	DADO	ECROU	MUTTER	NUT	M 12 x 1,75 AUTOBLOCC.		
9	61005000	2	RONDELLA	RONDELLE	SCHEIBE	WASHER	PIANA Ø 12 UNI 6592		
10	60027500	1	VITE	VIS	SCHRAUBE	SCREW	TE 12 x 110 UNI 5739		
11	32174700	2	DISTANZIALE	ENTRETOISE	DISTANZSTUECCK	SPACER	H = 12		
12	32187300	1	DISTANZIALE	ENTRETOISE	DISTANZSTUECCK	SPACER			
13	68087600	1	RUOTA	ROUE	RAD	WHEEL			
14	68099100		PIATTO	PLAQUE	PLATTE	DISC			113442
15	68099200		DISTANZIALE	ENTRETOISE	DISTANZSTUECCK	SPACER			113442
16	31091800	1	ASTA	TIGE	STANGE	ROD			113442
17	64000900	1	COPIGLIA	COUPILLE	SPLINT	COTTER PIN	R Ø 3		113442
18	61005000	2	RONDELLA	RONDELLE	SCHEIBE	WASHER	PIANA Ø 12 UNI 6592		113442
19	64000200	4	INGRASSATORE	GRAISSEUR	SCHMIERNIPPEL	GREASE FITTING	M 6 x 1 DIRITTO		
20	40278900	2	STAFFA RUOTE	BRIDE	BUEGEL	BRACKET			
21	60030200	6	VITE	VIS	SCHRAUBE	SCREW	TE 10 x 80 UNI 5737		
22	61004400	6	RONDELLA	RONDELLE	SCHEIBE	WASHER	PIANA Øi 10 Øe 50		
23	41118200	1	TELAIO	CHASSIS	RAHMEN	FRAME			
24	30201200	2	STAFFA	BRIDE	BUEGEL	BRACKET			
25	68114000	2	PERNO COMPLETO	PIVOT	BOLZEN	PIN			
26	60041600	2	VITE	VIS	SCHRAUBE	SCREW	TE 18 x 70 UNI 5737		

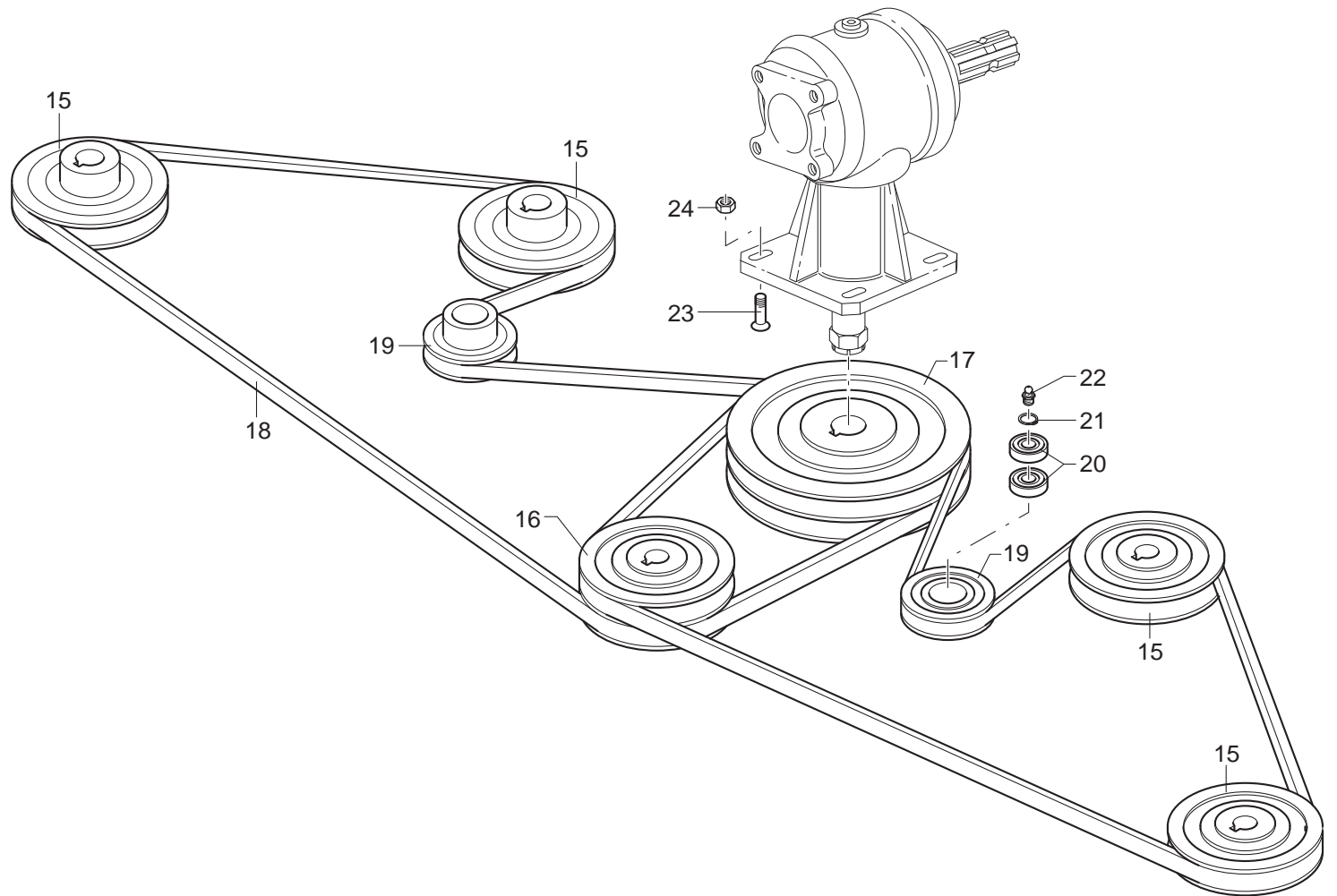
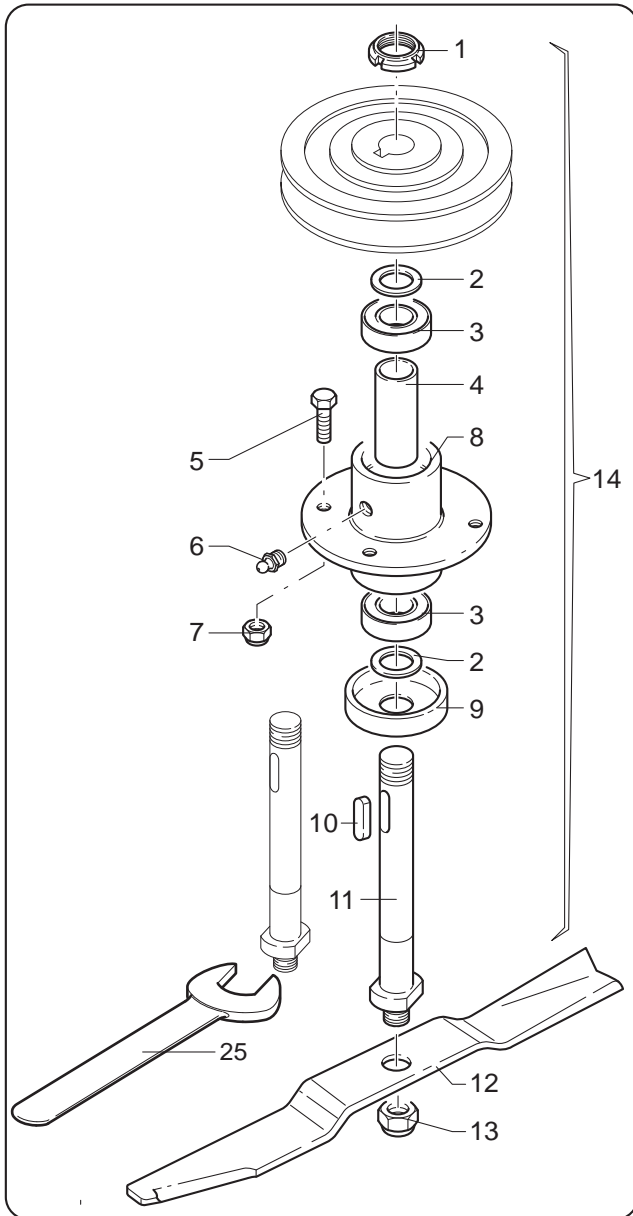


MURATORI MRP

TAV. 1.0

POS.	N° CODICE	Q.	DESCRIZIONE	DESIGNATION	BENENNUNG	DESCRIPTION	DESIGNAZIONE	Da matr. De nr. serie Vom Seriennr. From serial nr.	Fino matr. Jusqu'au nr. serie Bis Seriennr. Up to serial nr.
27	61006100	8	RONDELLA	RONDELLE	SCHEIBE	WASHER	PIANA Ø 18 UNI 6592		
28	62011100	8	DADO	ECROU	MUTTER	NUT	M 18		
29	60035000	2	VITE	VIS	SCHRAUBE	SCREW	TE 18 x 50 UNI 5739		
30	39292100	1	COPERCHIO DX	COUVERCLE (D)	DECKEL (RECHTS)	COVER (RH)			
31	30201300	1	SUPPORTO	SUPPORT	HALTERUNG	SUPPORT			
32	39292200	1	COPERCHIO SX	COUVERCLE (G)	DECKEL (LINKS)	COVER (LH)			
33	40279000	1	SUPPORTO	SUPPORT	HALTERUNG	SUPPORT			
34	62010200	6	DADO	ECROU	MUTTER	NUT	M 8 x 1.25 AUTOBLOCC.		
35	61004700	6	RONDELLA	RONDELLE	SCHEIBE	WASHER	PIANA Ø 8 UNI 6592		
36	62010400	4	DADO	ECROU	MUTTER	NUT	M 10 x 1.5 AUTOBLOCC.		
37	61004900	4	RONDELLA	RONDELLE	SCHEIBE	WASHER	PIANA Ø 10 UNI 6592		
38	40279100	1	PIASTRA	PLAQUE	PLATTE	PLATE			
39	60030200	1	VITE	VIS	SCHRAUBE	SCREW	TE 10 x 80 UNI 5739		
40	61004900	1	RONDELLA	RONDELLE	SCHEIBE	WASHER	PIANA Ø 10 UNI 6592		
41	62007000	1	DADO	ECROU	MUTTER	NUT	M 10 x 1.5 UNI 5588		
42	30201400	1	TIRANTE	TIRANT	STANGE	TIEROD			
43	62010600	1	DADO	ECROU	MUTTER	NUT	M 12 x 1.75 AUTOBLOCC.		
44	61005000	2	RONDELLA	RONDELLE	SCHEIBE	WASHER	PIANA Ø 12 UNI 6592		
45	60021200	2	VITE	VIS	SCHRAUBE	SCREW	TE 12 x 35 UNI 5739		
46	30201500	2	TIRANTE	TIRANT	STANGE	TIEROD			
47	60030500	1	VITE	VIS	SCHRAUBE	SCREW	TE 12 x 100 UNI 5737		
48	61005000	2	RONDELLA	RONDELLE	SCHEIBE	WASHER	PIANA Ø 12 UNI 6592		
49	32187400	2	BOCCOLA	DOUILLE	BUECHSE	BUSHING			
50	62010600	1	DADO	ECROU	MUTTER	NUT	M 12 x 1.75 AUTOBLOCC.		
51	40279200	1	ATTACCO	ATTACHE	ANSCHLUSS	ATTACHMENT			
52	60022800	6	VITE	VIS	SCHRAUBE	SCREW	TE 8 x 20	113443	

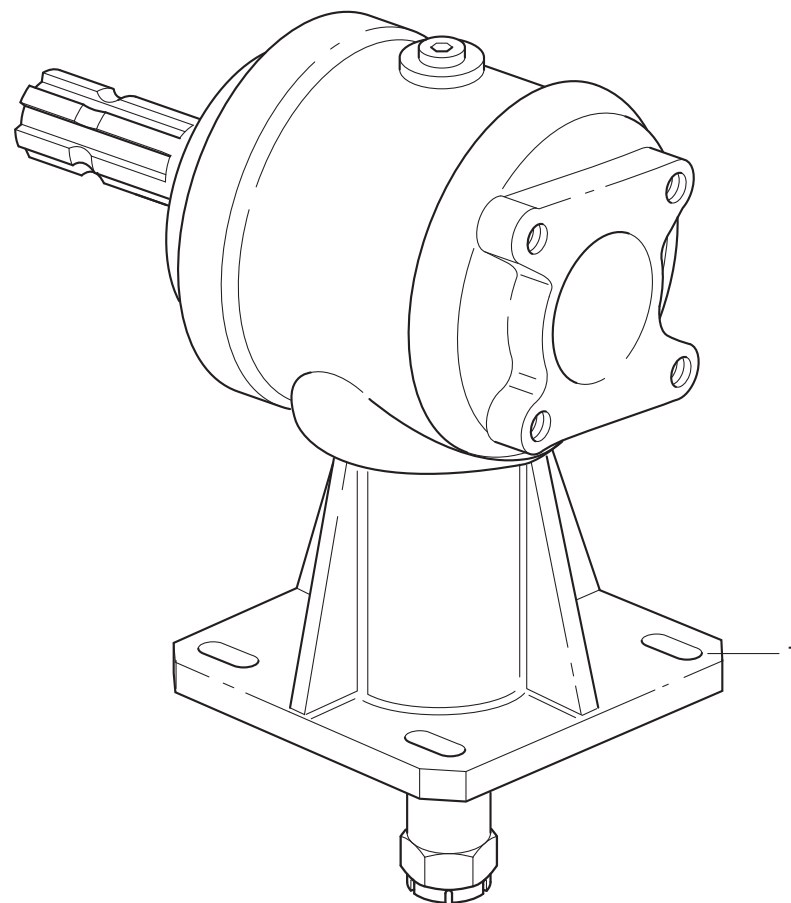


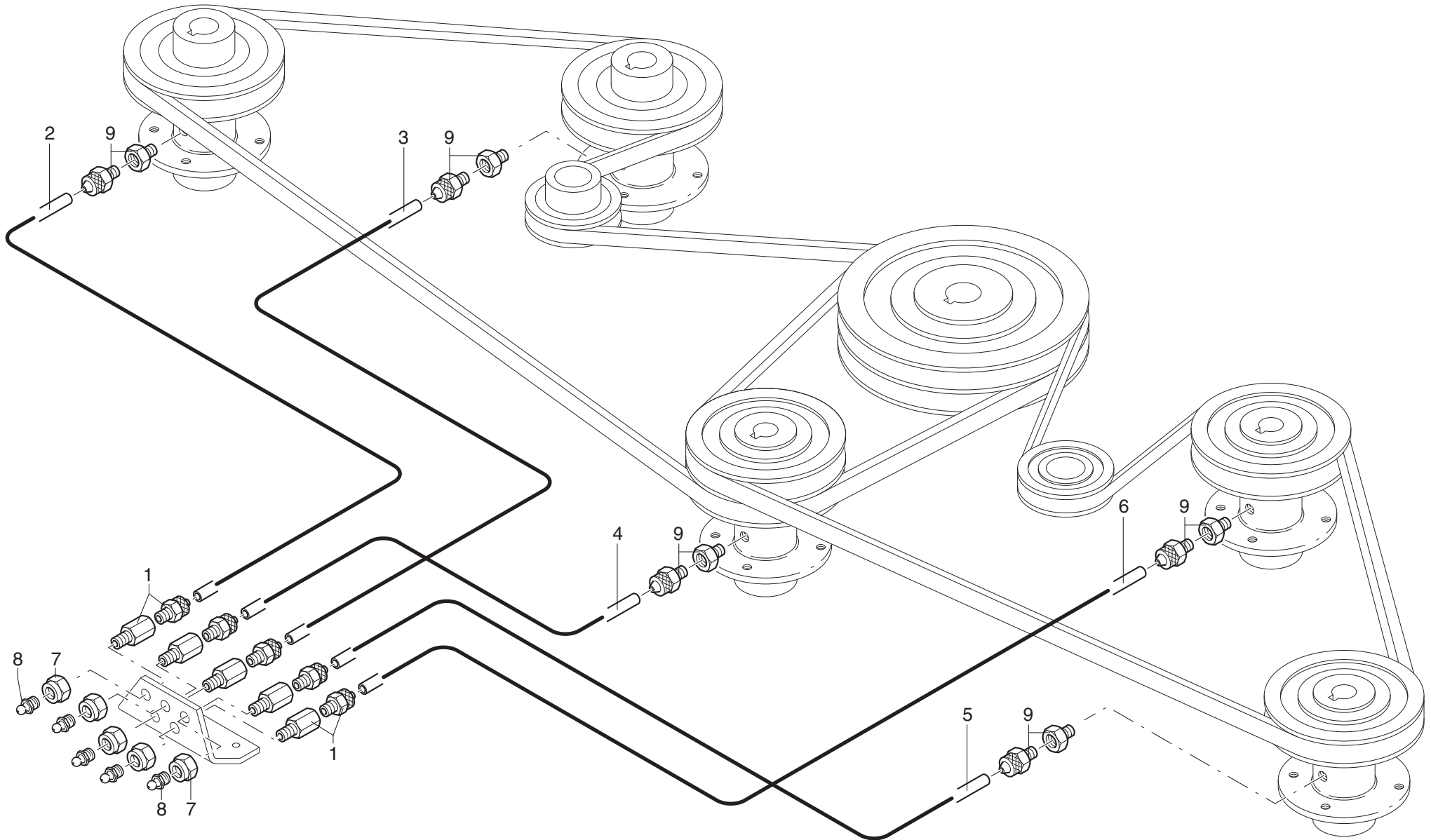


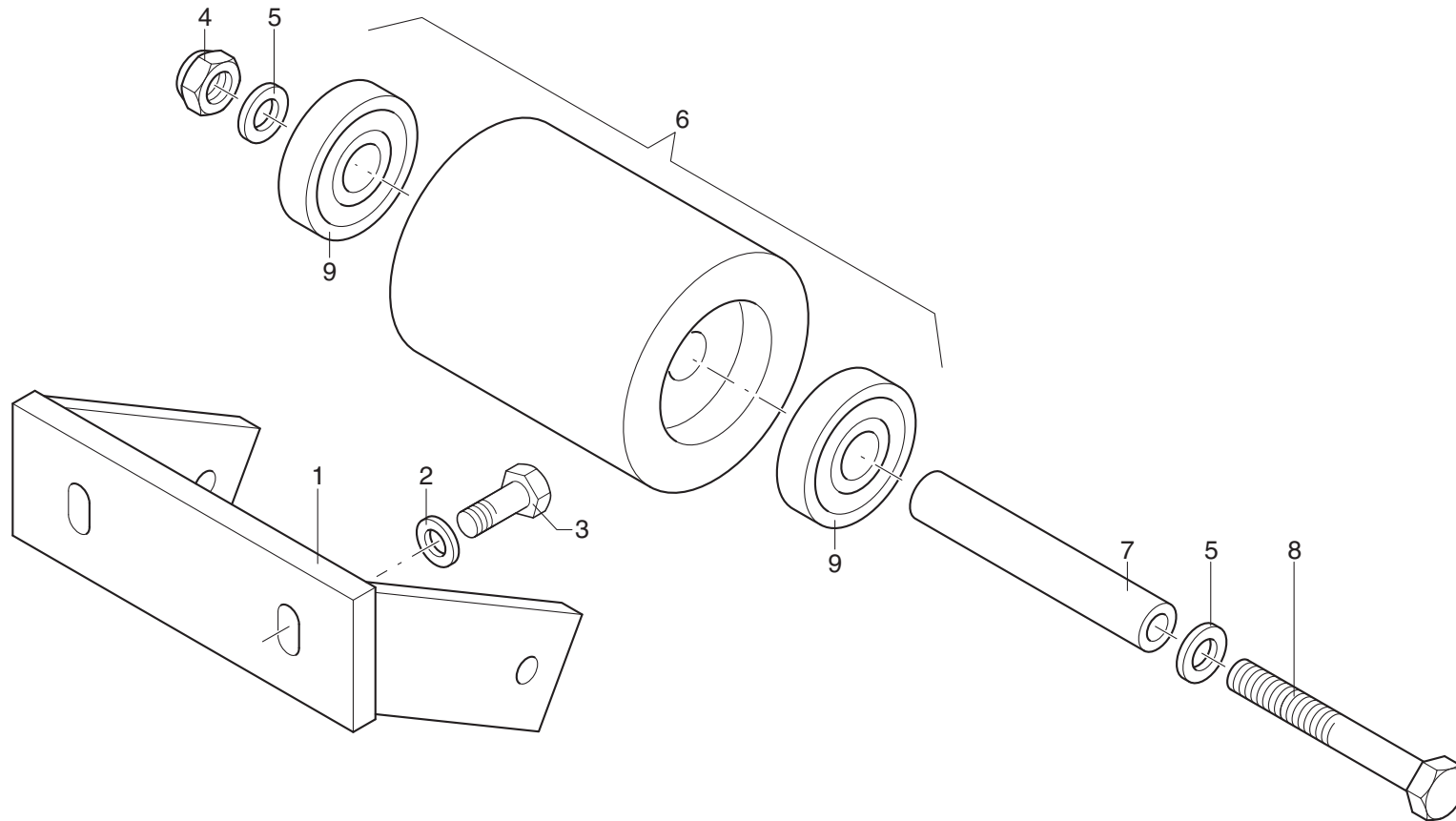
MURATORI MRP

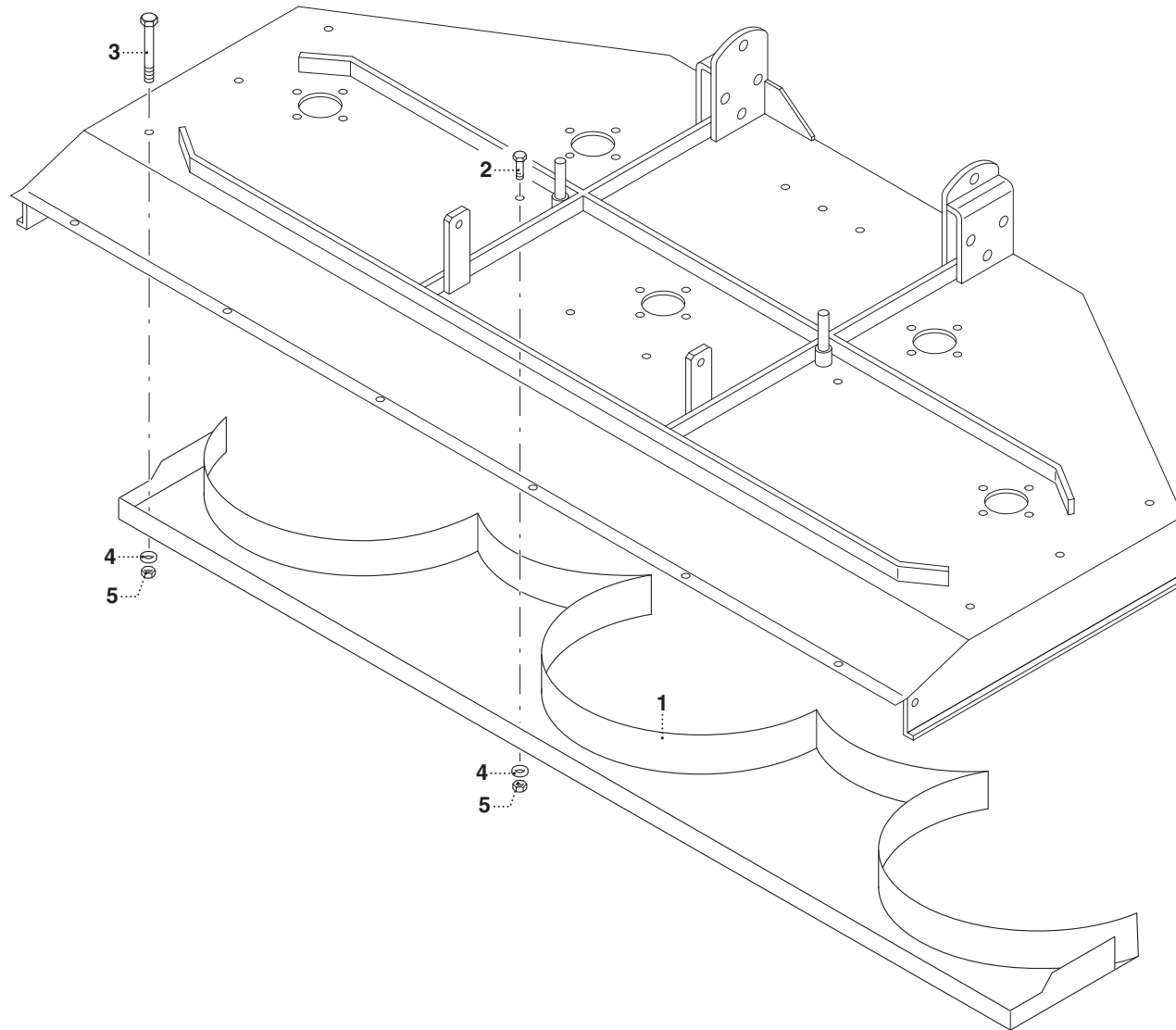
TAV. 2.0

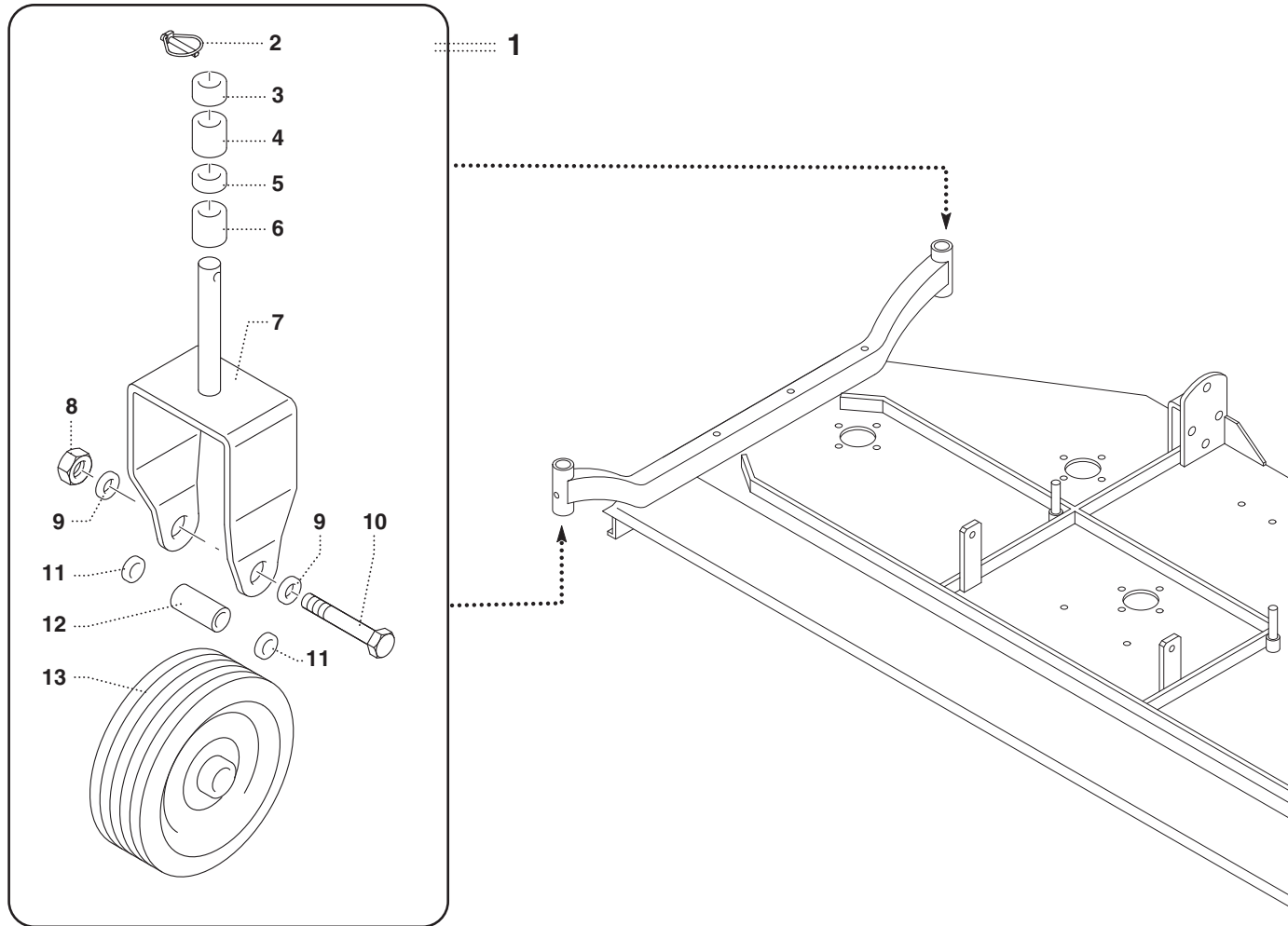
POS.	N° CODICE	Q.	DESCRIZIONE	DESIGNATION	BENENNUNG	DESCRIPTION	DESIGNAZIONE	Da matr. De nr. serie Vom Seriennr. From serial nr.	Fino matr. Jusqu'au nr. serie Bis Seriennr. Up to serial nr.
1	62001200	10	GHIERA	FRETTE	NUTMUTTER	RING NUT	M 25 x 1.5 AUTOBLOCC.		
2	68028400	5	SPESSORE	EPAISSEUR	BEILAGERING	SPACER	35 x 25 x 1		
3	67016600	10	CUSCINETTO	ROULEMENT	LAGER	BEARING	6205 RS		
4	32187500	5	DISTANZIALE	ENTRETOISE	DISTANZSTUECK	SPACER			
5	60021300	20	VITE	VIS	SCHRAUBE	SCREW	TE 10 x 30 UNI 5739		
6	64001800	5	INGRASSATORE	GRAISSEUR	SCHMIERNIPPEL	GREASE FITTING	M 10 x 1 DIRITTO		
7	62010400	20	DADO	ECROU	MUTTER	NUT	M 10 x 1.5 AUTOBLOCC.		
8	40279300	5	SUPPORTO	SUPPORT	HALTERUNG	SUPPORT			
9	39292300	5	PROTEZIONE	PROTECTION	SCHUTZ	GUARD			
10	65002900	5	LINGUETTA	CLAVETTE	FEDER	KEY	8 x 7 x 35 UNI 6604		
11	31091900	5	ALBERO	ARBRE	WELLE	SHAFT			
12	12017800	5	LAMA	LAME DE COUPE	MESSER	BLADE			
13	62011100	5	DADO	ECROU	MUTTER	NUT	M 18 x 1.6 AUTOBLOCC.		
14	45142000	5	MOZZO COMPLETO	ENSEMBLE MOYEU	SATZ NABE	SPINDLE ASSEMBLY			
15	68099300	4	PULEGGIA	POULIE	RIEMENSCHLEIBE	PULLEY	Ø 140 1 GOLA		
16	68099400	1	PULEGGIA	POULIE	RIEMENSCHLEIBE	PULLEY	Ø 140 2 GOLE		
17	68099500	1	PULEGGIA	POULIE	RIEMENSCHLEIBE	PULLEY	Ø 250 2 GOLE		
18	68092300	2	CINGHIA	COURROIE	KEILRIEMEN	BELT			
19	68099600	2	PULEGGIA	POULIE	RIEMENSCHLEIBE	PULLEY			
20	67016600	4	CUSCINETTO	ROULEMENT	LAGER	BEARING	6205 RS		
21	63002200	2	ANELLO ELASTICO	ARRETOIR	SPANNRING	SNAP-RING	Ø25 E UNI 7435		
22	64000200	2	INGRASSATORE	GRAISSEUR	SCHMIERNIPPEL	GREASE FITTING	M 6 x 1		
23	60033200	4	VITE	VIS	SCHRAUBE	SCREW	TSEI 16 x 45 UNI 5933		
24	62011000	4	DADO	ECROU	MUTTER	NUT	M 16 x 2 AUTOBLOCC.		
25	81000100	1	CHIAVE	CLE	SCHLUESSEL	KEY			

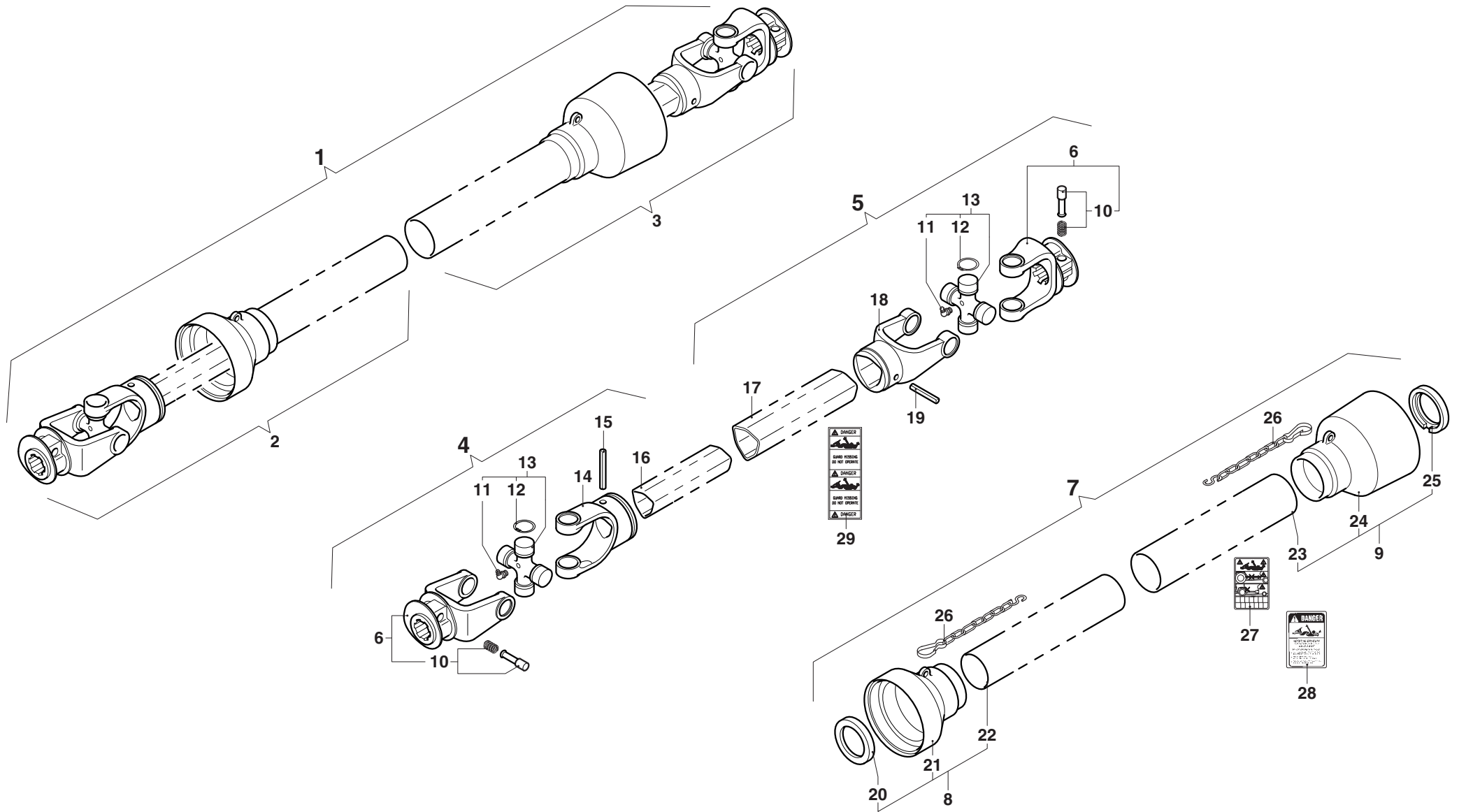








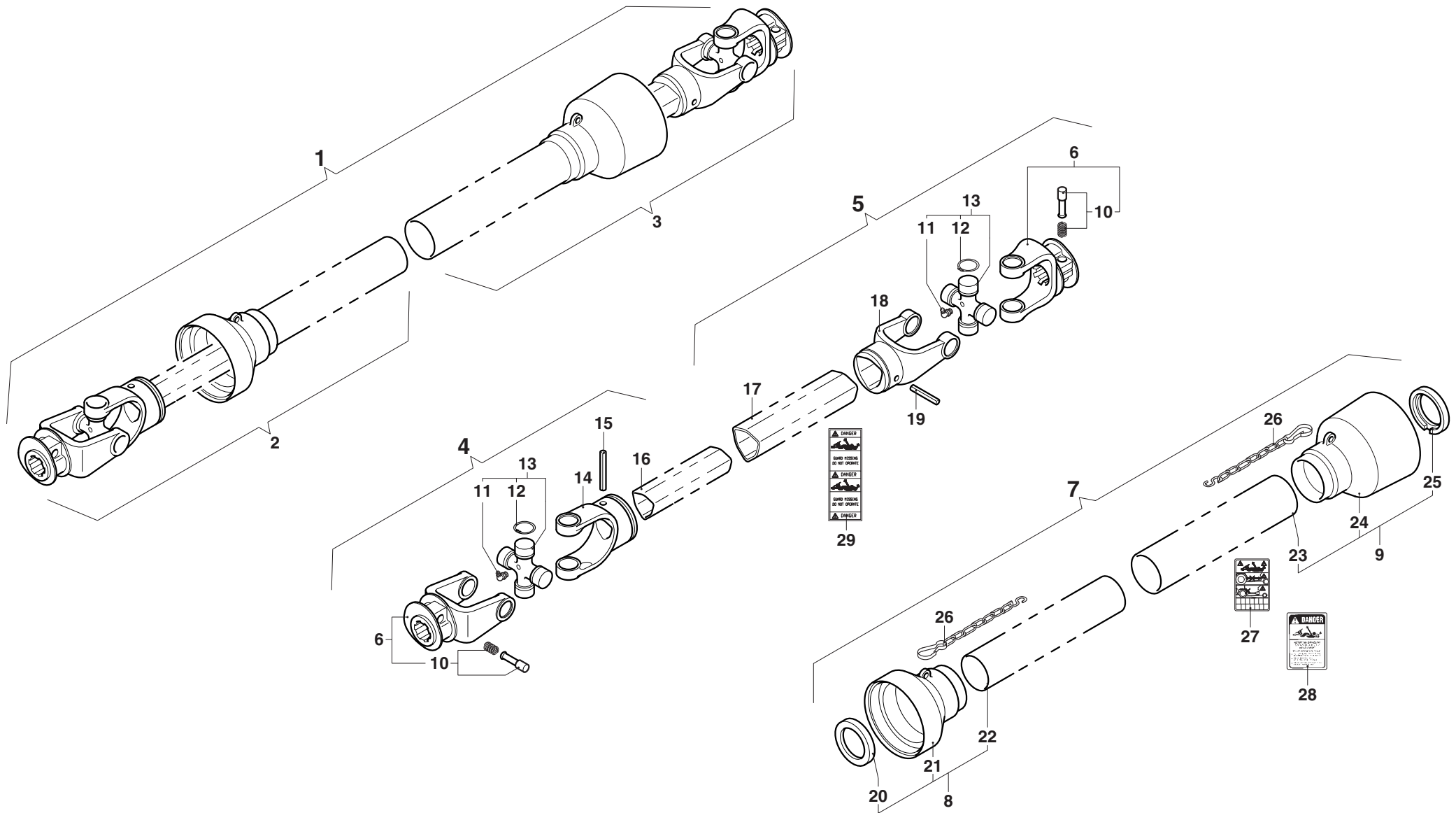




MURATORI MRP

TAV. 8.0

POS.	N° CODICE	Q.	DESCRIZIONE	DESIGNATION	BENENNUNG	DESCRIPTION	DESIGNAZIONE	Da matr. De nr. serie Vom Seriennr. From serial nr.	Fino matr. Jusqu'au nr. serie Bis Seriennr. Up to serial nr.
1	AB408SFDO	1	ALBERO CARDANICO COMPLETO	ARBRE A JOINTS DE CARDAN	KARDANWELLE	PTO SHAFT			
2	B4080B1	1	SEMIALBERO INTERNO	DEMI-ARBRE INTERIEUR	INNENHALBWELLE	INTERNAL HALF SHAFT			
3	B4080B2	1	SEMIALBERO ESTERNO	DEMI-ARBRE EXTERIEUR	AUSSENHALBWELLE	EXTERNAL HALF SHAFT			
4	B408001	1	SEMIALBERO INTERNO	DEMI-ARBRE INTERIEUR	INNENHALBWELLE	INTERNAL HALF SHAFT			
5	B408002	1	SEMIALBERO ESTERNO	DEMI-ARBRE EXTERIEUR	AUSSENHALBWELLE	EXTERNAL HALF SHAFT			
6	0800403	2	FORCELLA	FOURCHE	GABEL	YOKE			
7	083B04080	1	PROTEZIONE	PROTECTION	SCHUTZ	GUARD			
8	083B040801	1	PROTEZIONE INTERNA	PROTECTION INTERIEURE	INNENSCHUTZ	INTERNAL GUARD			
9	083B040802	1	PROTEZIONE ESTERNA	PROTECTION EXTERIEURE	AUSSENSCHUTZ	EXTERNAL GUARD			
10	0986014047	2	PULSANTE	BOUTON	DRUCKKNOPF	PUSH BOTTON			
11	09840081002	2	INGRASSATORE	GRAISSEUR	SCHMIERNIPPEL	GREASE FITTING			
12	09802027	8	ANELLO ELASTICO	ARRETOIR	SPANNRING	SNAP-RING			
13	08204	2	CROCIERA	CROISILLON	KREUZSTUECK	SPIDER			
14	08004011	1	FORCELLA	FOURCHE	GABEL	YOKE			
15	098700855	1	SPINA ELASTICA	GOUPILLE ELASTIQUE	SPANNSTIFT	ELASTIC PIN			
16	09881364100	1	TUBO INTERNO	TUBE INTERIEUR	INNENROHR	INTERNAL TUBE			
17	09881433100	1	TUBO ESTERNO	TUBE EXTERIEUR	AUSSENROHR	EXTERNAL TUBE			
18	08004021	1	FORCELLA	FOURCHE	GABEL	YOKE			
19	098700860	1	SPINA ELASTICA	GOUPILLE ELASTIQUE	SPANNSTIFT	ELASTIC PIN			
20	0265240008	1	GHIERA	FRETTE	NUTMUTTER	RING NUT			
21	0256040425	1	CUFFIA	CAPOUCHON	HAUBE	GUARD			
22	0988961B4080	1	TUBO INTERNO	TUBE INTERIEUR	INNENROHR	INTERNAL TUBE			
23	0988966B4080	1	TUBO ESTERNO	TUBE EXTERIEUR	AUSSENROHR	EXTERNAL TUBE			
24	0256040424	1	CUFFIA	CAPOUCHON	HAUBE	GUARD			
25	0265240007	1	GHIERA	FRETTE	NUTMUTTER	RING NUT			





MURATORI S.p.A.

Via Pavarello, 21 - 41051 Castelnuovo Rangone (MO) Italy - Tel. 059.5330611 Fax 059.537259

www.muratoriequip.it *info@muratoriequip.it*

Capitale sociale Euro 480.000 interamente versato

Registro Imprese di Modena

Codice fiscale e numero d'iscrizione: 00708860366