



# MURATORI

**TIPO-TYPE-TYP  
MT 90**

**CATALOGO RICAMBI**  
**Catalogue Pièces Detachées**  
**Ersatzteilkatalog**  
**Spare Parts Catalogue**  
**Catálogo Recambios**

**EDIZIONE 10/2023**



Per ordinare parti di ricambio specificare:

- tipo e matricola della macchina (apposti sulla macchina o sui documenti di acquisto);
- numero del riferimento del pezzo nel disegno (Pos.), numero della tavola (Tav.) e numero di codice

**N.B.:** le indicazioni destro o sinistro vengono date guardando la macchina da dietro.

Pour les commandes de pièces de rechange veuillez spécifier:

- type et numéro de serie de la machine (indiqués sur la machine et sur le bon d'achat);
- numéro de référence du pièce sur le plan (Pos.), numéro du plan (Tav.) et numéro de code (codice)

**N.B.:** les indications droite ou gauche sont données en regardant la machine par derrière.

Zum Bestellen von Ersatzteilen folgendes angeben:

- Typ und Serien-Nr. der Maschine (zu finden auf der Maschine oder der Einkaufspapieren);
- Bezug-Nr. des Ersatzteils auf der Zeichnung (Pos.), Zeichnungsnummer (Tav.) und Kodenummer (codice)

**N.B.:** die Angaben rechts und links verstehen sich so, dass man hinter der Maschine steht.

When ordering spare parts specify:

- machine type and serial number (found on the machine or on the purchasing documents);
- reference number of the part on the relative drawing (Pos.), number of the drawing (Tav.) and part number (codice)

**N.B.:** right-hand or left-hand indications are made by viewing the machine from the rear.

**TAV. 1.0**

GRUPPO TELAIO  
ENSEMBLE CHASSIS  
SATZ FÜR RAHMEN  
KIT FOR FRAME

**TAV. 2.0**

ACCESSORI A COMPLETAMENTO  
OPTIONS D'ACHEVEMENT  
ZUBEHÖRE ZUR ERGANZUNG DER MASCHINE  
CHOICE OF EQUIPMENT COMPLETING MACHINE

**TAV. 3.0**

GRUPPO RULLO ROTORE  
ENSEMBLE ROTOR  
SATZ FÜR ROTOR  
KIT FOR ROTOR

**TAV. 4.0**

GRUPPO MOLTIPLICATORE A 1 VELOCITA'  
ENSEMBLE BOITER MONOVITESSE  
SATZ FÜR EINGANGGETRIEBE  
KIT FOR ONE-SPEED GEAR BOX

**TAV. 4.1**

GRUPPO MOLTIPLICATORE A 1 VELOCITA'  
ENSEMBLE BOITER MONOVITESSE  
SATZ FÜR EINGANGGETRIEBE  
KIT FOR ONE-SPEED GEAR BOX

**TAV. 5.0**

GRUPPO RULLO POSTERIORE  
ENSEMBLE ROULEAU ARRIERE  
SATZ HINTERE WALZE  
KIT REAR ROLLER

**TAV. 6.0**

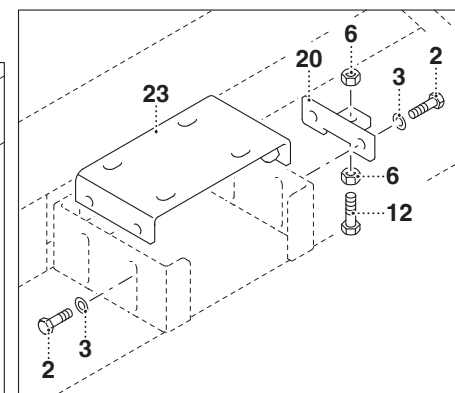
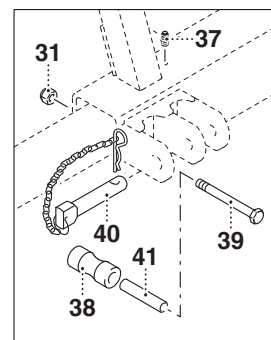
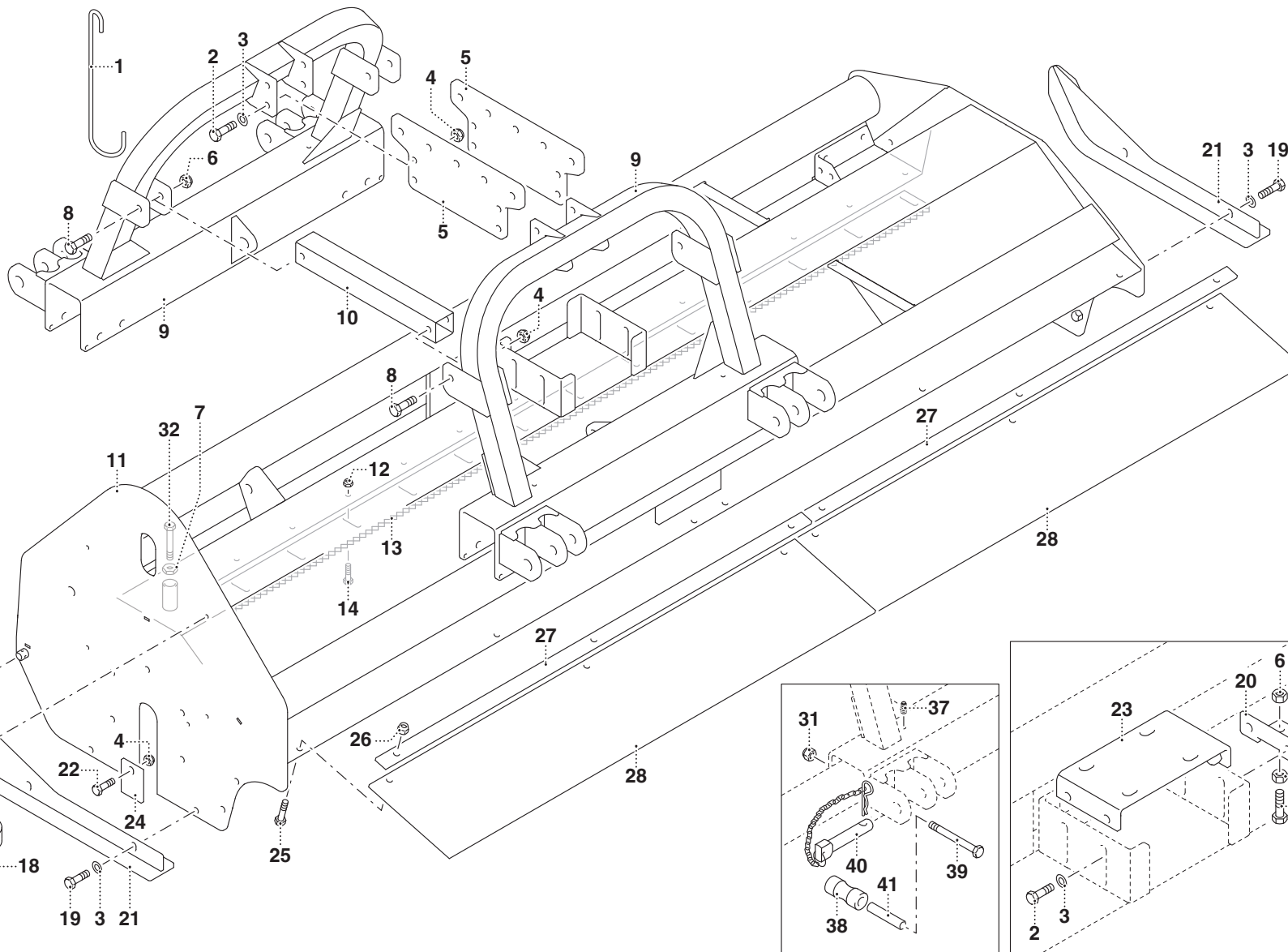
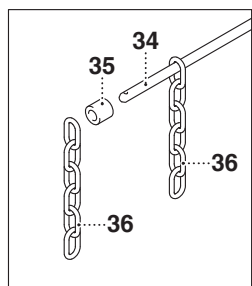
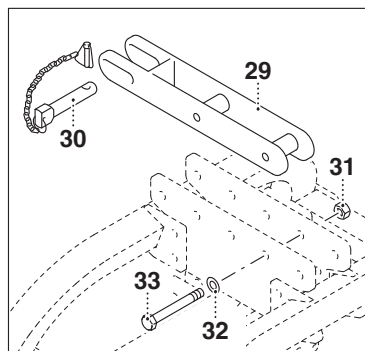
RUOTE ANTERIORI  
ROUES AVANT  
VORDERRÄDER  
FRONT WHEELS

**TAV. 7.0**

BLINDATURA  
DOUBLE FRAME  
DOPPELRAHMEN  
DOUBLE CHASSIS

**TAV. 8.0**

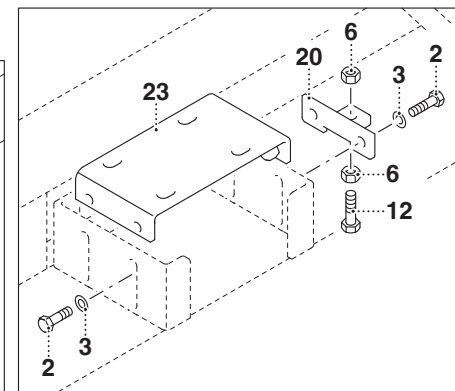
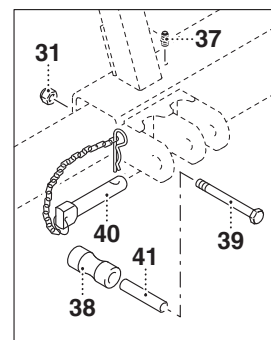
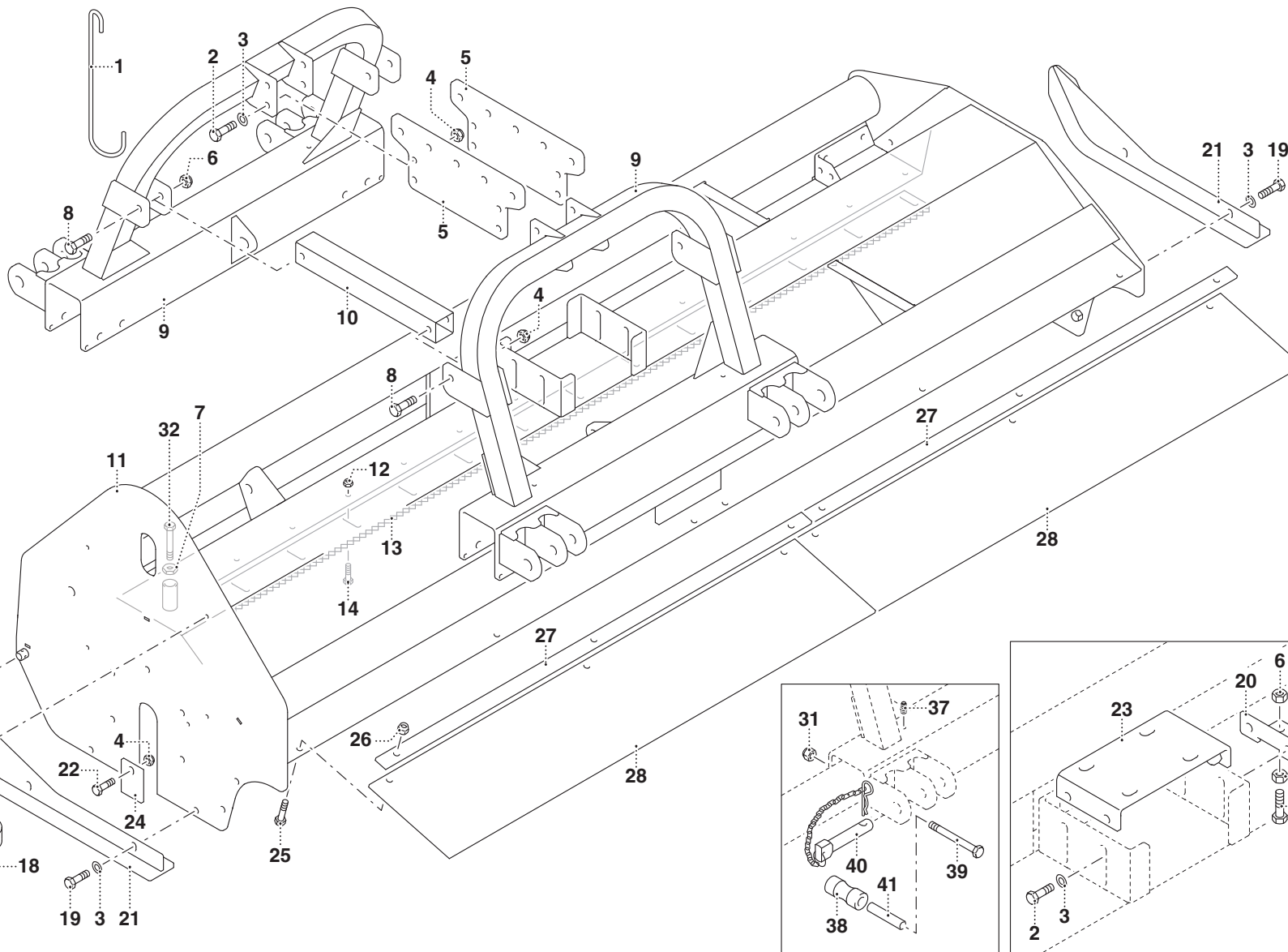
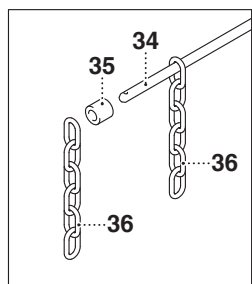
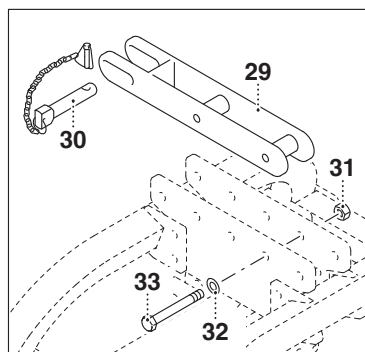
ALBERO CARDANICO COMPLETO - A610SF  
ARBRE A JOINTS DE CARDAN - A610SF  
KARDANWELLE - A610SF  
PTO SHAFT - A610SF



## MURATORI MT 90

TAV. 1.0

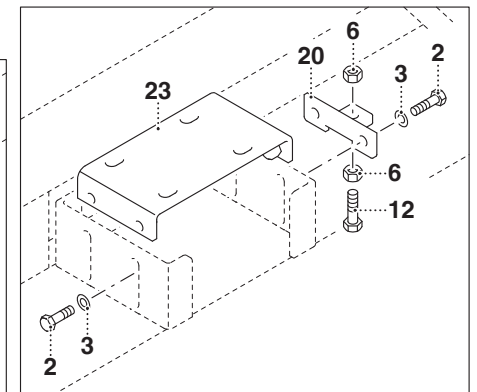
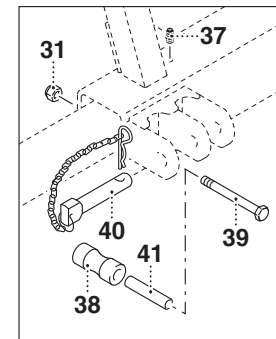
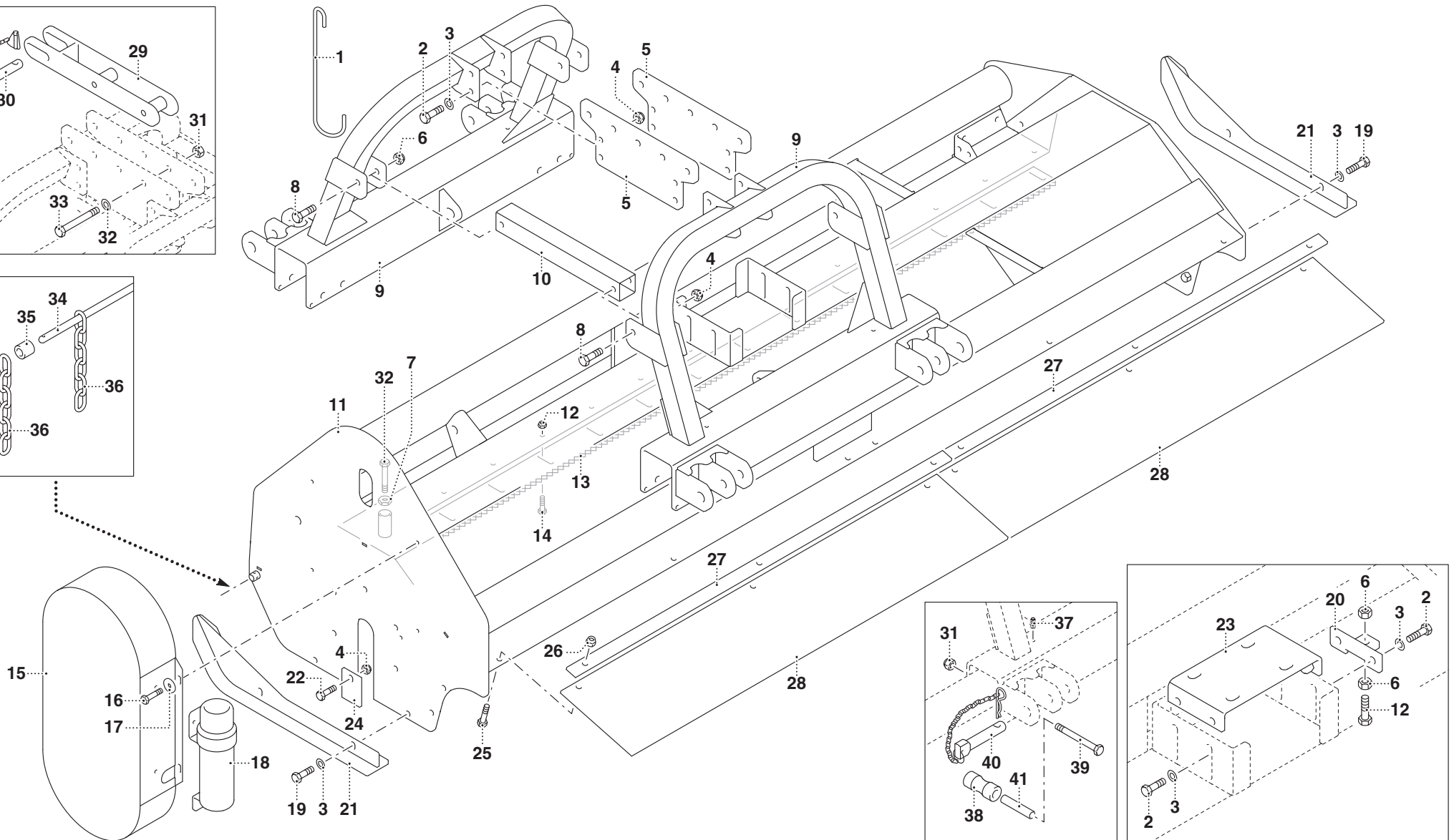
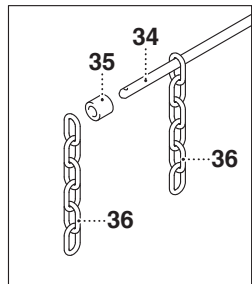
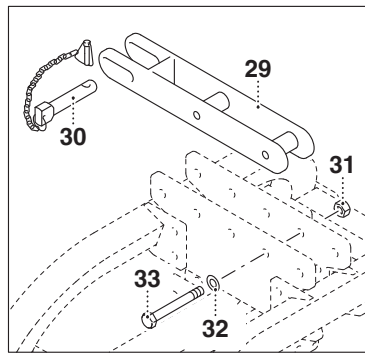
POS.	N° CODICE	Q.	DESCRIZIONE	DESIGNATION	BENENNUNG	DESCRIPTION	DESIGNAZIONE	Da matr. De nr. serie Vom Seriennr. From serial nr.	Fino matr. Jusqu'au nr. serie Bis Seriennr. Up to serial nr.
1	38024500	1	GANCIO	CROCHET	HAKEN	HOOK			
2	60026400	8	VITE	VIS	SCHRAUBE	SCREW	TE M14X40 ZNT		
3	61006600	16	RONDELLA	RONDELLE	SCHEIBE	WASHER	PIANA D.14 UNI6592 ZNT		
4	62010800	9	DADO	ECROU	MUTTER	NUT	M14 AUTOBLOCC.		
5	39395200	2	STAFFA	BRIDE	BÜGEL	BRACKET			
6	62008700	2	DADO	ECROU	MUTTER	NUT	M14 MEDIO ZNT 5588		
7	62014500	2	DADO	ECROU	MUTTER	NUT	M20 BASSO ZNT 5589		
8	60028600		VITE	VIS	SCHRAUBE	SCREW	TE M14X100 ZNT 5737		
9	40352300	1	ATTACCO ANTERIORE	ATTACHE FRONTAL	FRONTANSCHLUSS	FRONT ATTACHMENT	155-1280		
9	40352305	1	ATTACCO ANTERIORE	ATTACHE FRONTAL	FRONTANSCHLUSS	FRONT ATTACHMENT	130		
10	32210500	2	TIRANTE	TIRANT	STANGE	TIEROD			
11	41138500	1	TELAIO	CHASSIS	RAHMEN	FRAME	130		
11	41138600	1	TELAIO	CHASSIS	RAHMEN	FRAME	155		
11	41138700	1	TELAIO	CHASSIS	RAHMEN	FRAME	180		
11	41138800	1	TELAIO	CHASSIS	RAHMEN	FRAME	200		
11	41138900	1	TELAIO	CHASSIS	RAHMEN	FRAME	230		
11	41139100	1	TELAIO	CHASSIS	RAHMEN	FRAME	280		
12	60036300	1	VITE	VIS	SCHRAUBE	SCREW	TE M14X90 ZNT 5739		
13	39392300	1	CONTROCOLTELLO	CONTRECONTEAU	GEGENMESSER	COUNTERKNIFE	130		
13	39392400	1	CONTROCOLTELLO	CONTRECONTEAU	GEGENMESSER	COUNTERKNIFE	155		
13	39392500	1	CONTROCOLTELLO	CONTRECONTEAU	GEGENMESSER	COUNTERKNIFE	180		
13	39392600	1	CONTROCOLTELLO	CONTRECONTEAU	GEGENMESSER	COUNTERKNIFE	200		
13	39392700	1	CONTROCOLTELLO	CONTRECONTEAU	GEGENMESSER	COUNTERKNIFE	230		
13	39392900	1	CONTROCOLTELLO	CONTRECONTEAU	GEGENMESSER	COUNTERKNIFE	280		
14	60023000		VITE	VIS	SCHRAUBE	SCREW	M12X30 ZNT 5739		
15	40215600	1	CARTER	CARTER	KETTENKASTEN	CASING			



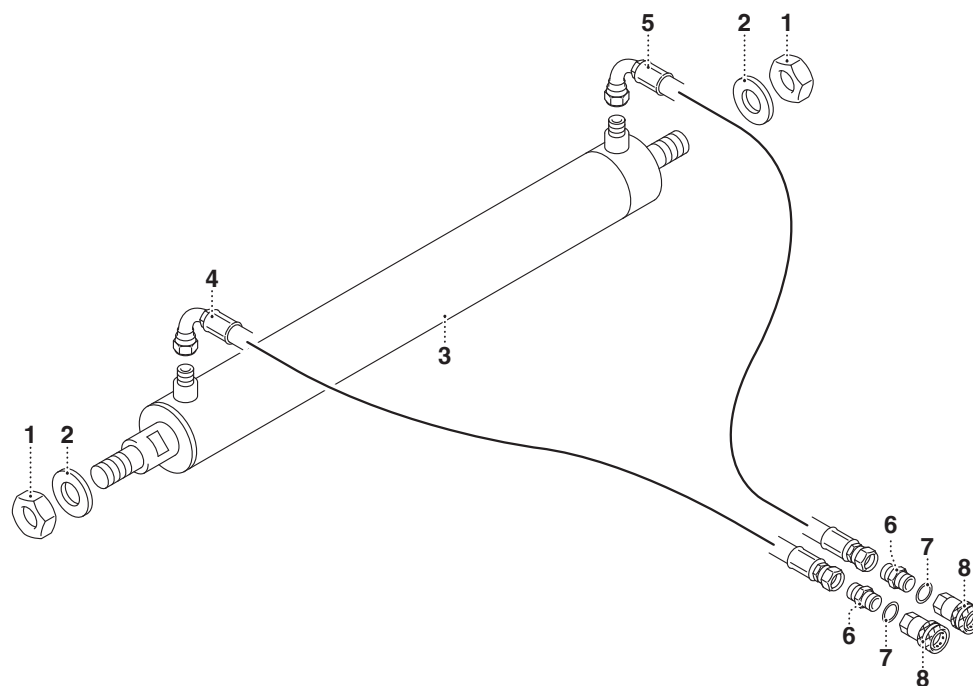
## MURATORI MT 90

TAV. 1.0

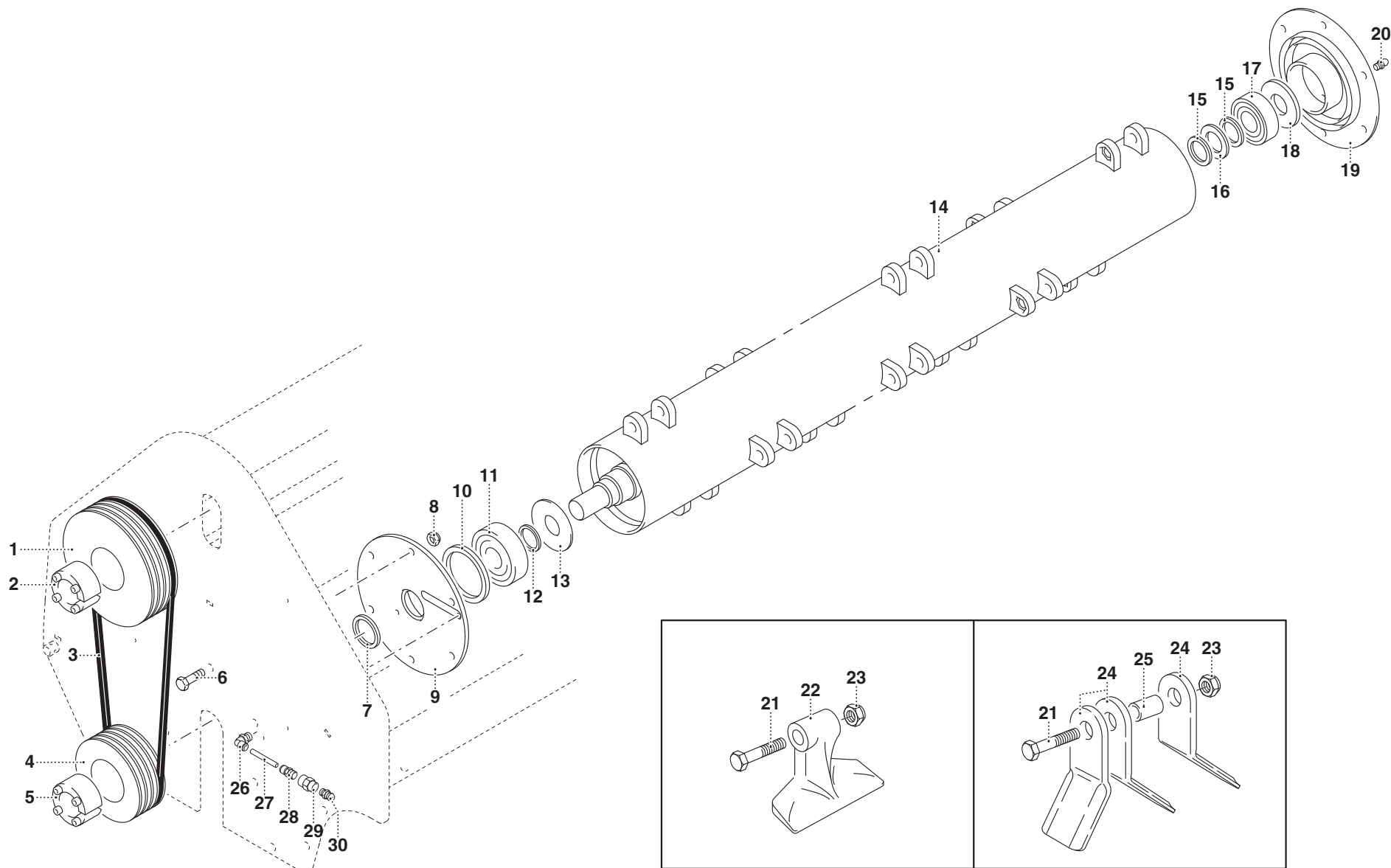
POS.	N° CODICE	Q.	DESCRIZIONE	DESIGNATION	BENENNUNG	DESCRIPTION	DESIGNAZIONE	Da matr. De nr. serie Vom Seriennr. From serial nr.	Fino matr. Jusqu'au nr. serie Bis Seriennr. Up to serial nr.
16	60026900	4	VITE	VIS	SCHRAUBE	SCREW	M8X25 ZNT 5739		
17	61006200	4	RONDELLA	RONDELLE	SCHEIBE	WASHER	PIANA D.9 F.L. ZNT		
18	45167900	1	PORTADOCUMENTI	PORTE-DOCUMENTS	AKTENTASCHEN	DOCUMENT HOLDER			
19	60023200		VITE	VIS	SCHRAUBE	SCREW	TE M14X45 ZNT 5739		
20	40215800	1	TIRANTE	TIRANT	STANGE	TIEROD			
21	40231200	2	SLITTA	PATIN	STUTZTKUFE	SKID			
22	60026700		VITE	VIS	SCHRAUBE	SCREW	TE M14X35 ZNT 5739		
23	39352200	1	SUPPORTO	SUPPORT	HALTERUNG	SUPPORT	130-230		
23	39352100	1	SUPPORTO	SUPPORT	HALTERUNG	SUPPORT	280		
24	39385400	1	CHIUSURA	FERMATURE	VERSCHLUSS	LOCK			
25	60021200		VITE	VIS	SCHRAUBE	SCREW	TE M12X35 ZNT 5739		
26	62010600		DADO	ECROU	MUTTER	NUT	M12 AUTOBLOCC.		
27	30220200	2	ATTACCO	ATTACHE	ANSCHLUSS	ATTACHMENT	130		
27	30220300	2	ATTACCO	ATTACHE	ANSCHLUSS	ATTACHMENT	155		
27	30220400	2	ATTACCO	ATTACHE	ANSCHLUSS	ATTACHMENT	180		
27	30220500	2	ATTACCO	ATTACHE	ANSCHLUSS	ATTACHMENT	200		
27	30220600	2	ATTACCO	ATTACHE	ANSCHLUSS	ATTACHMENT	230		
27	30220800	2	ATTACCO	ATTACHE	ANSCHLUSS	ATTACHMENT	280		
28	68144700	2	BANDELLA	BANDE	BAND	STRAP	130		
28	68144800	2	BANDELLA	BANDE	BAND	STRAP	155		
28	68144900	2	BANDELLA	BANDE	BAND	STRAP	180		
28	68145000	2	BANDELLA	BANDE	BAND	STRAP	200		
28	68145100	2	BANDELLA	BANDE	BAND	STRAP	230		
28	68145300	2	BANDELLA	BANDE	BAND	STRAP	280		
29	40215400	1	STAFFA	BRIDE	BÜGEL	BRACKET	155-280		
29	40215405	1	STAFFA	BRIDE	BÜGEL	BRACKET	130		







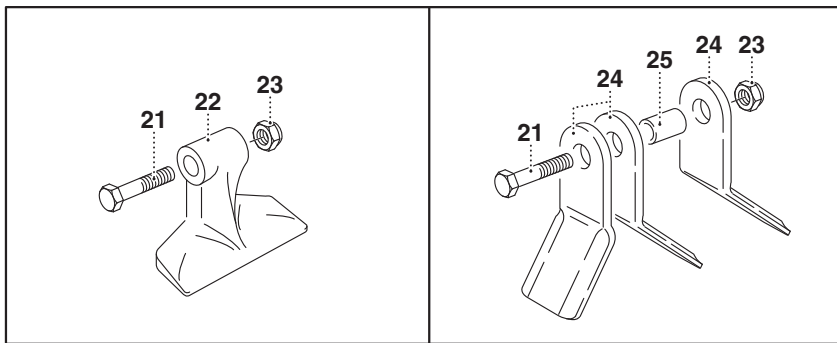
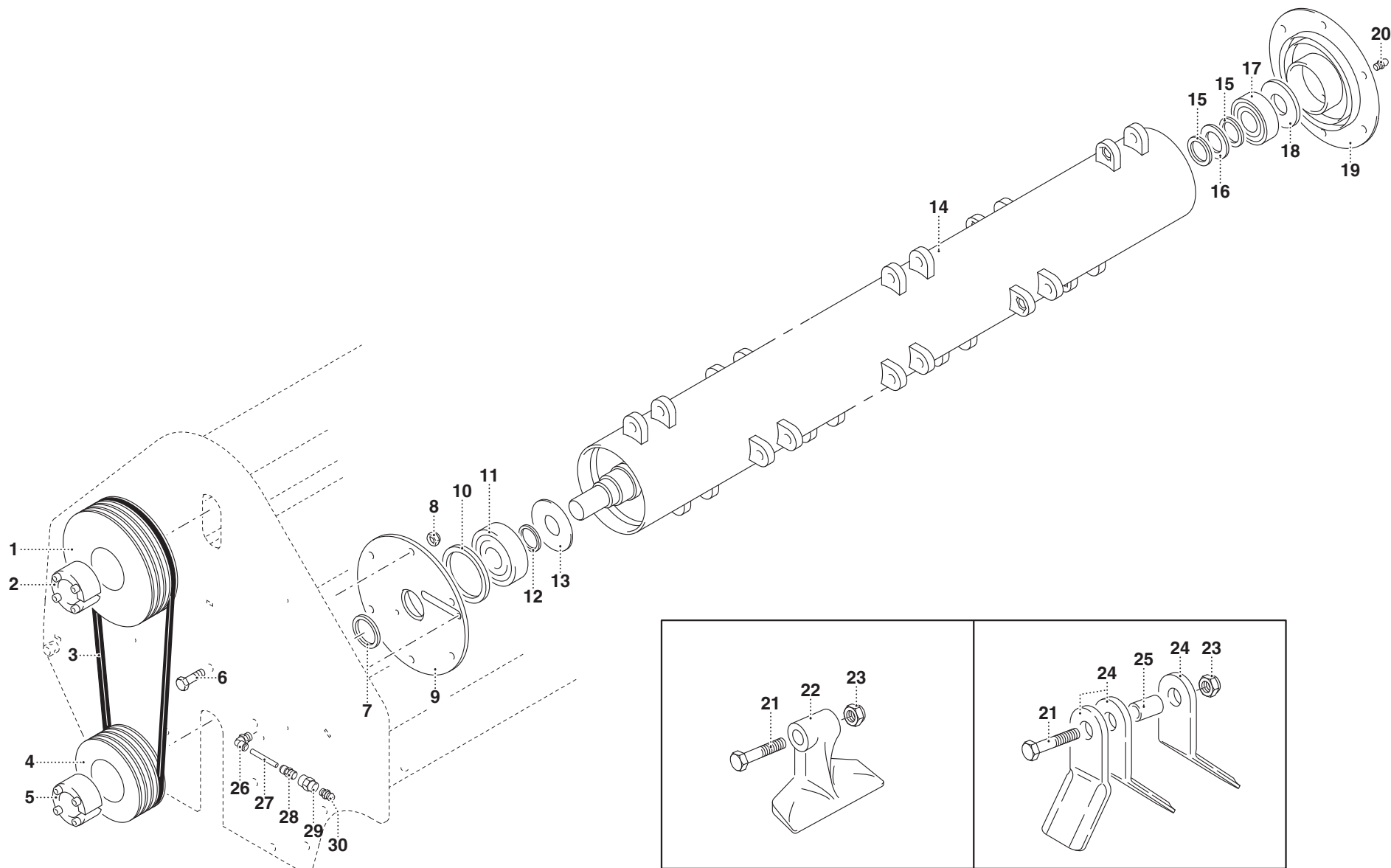




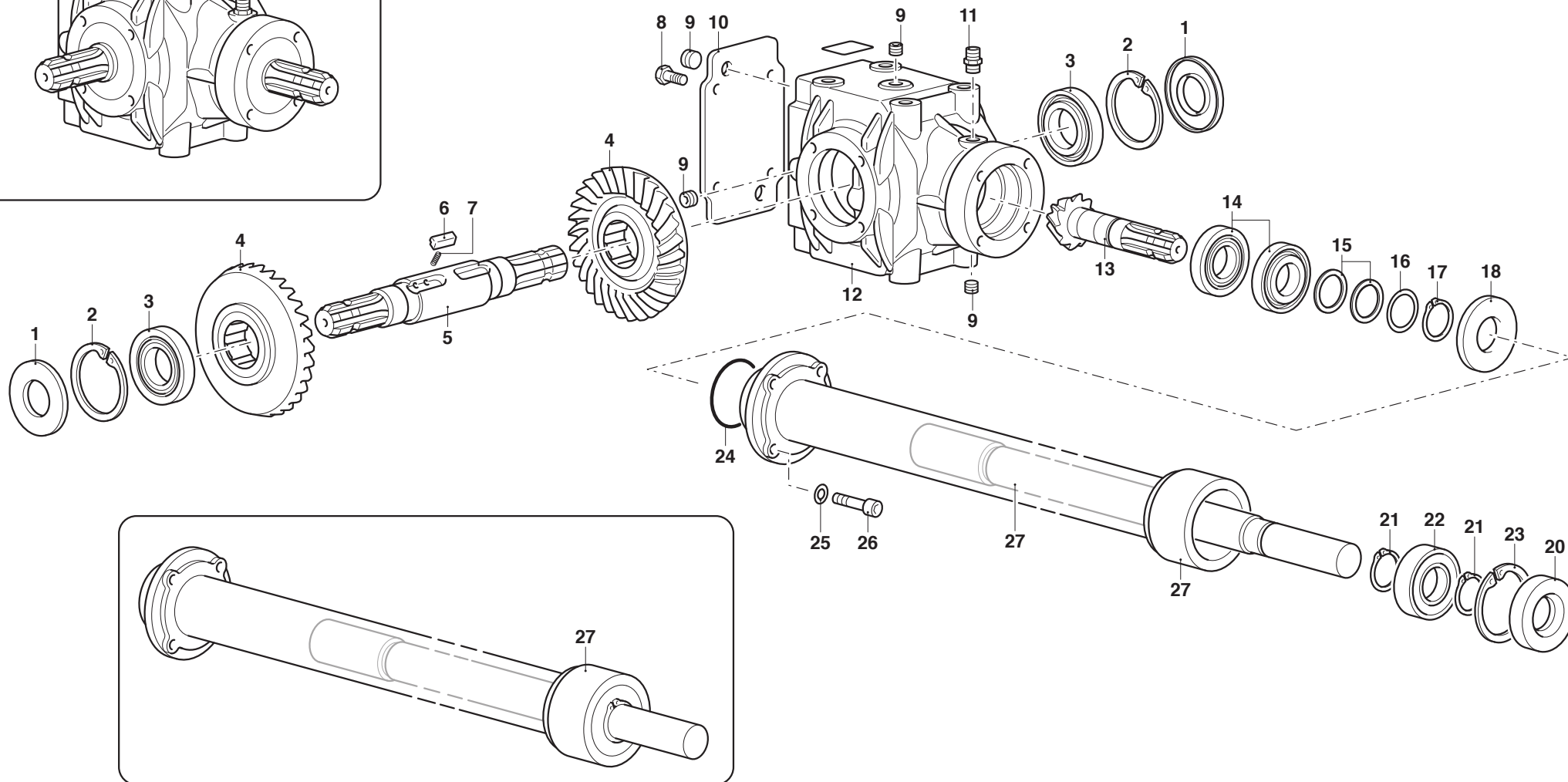
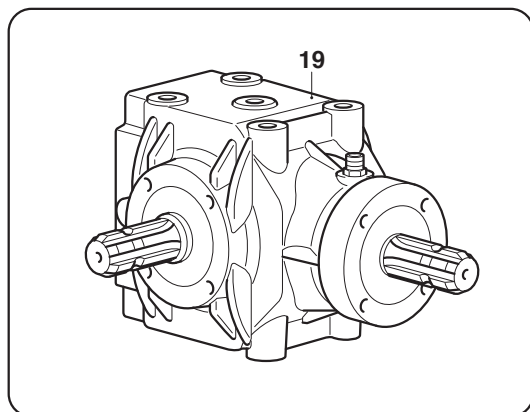
## MURATORI MT 90

TAV. 3.0

POS.	N° CODICE	Q.	DESCRIZIONE	DESIGNATION	BENENNUNG	DESCRIPTION	DESIGNAZIONE	Da matr. De nr. serie Vom Seriennr. From serial nr.	Fino matr. Jusqu'au nr. serie Bis Seriennr. Up to serial nr.
1	68085000	1	PULEGGIA	POULIE	RIEMENSCHLEIBE	PULLEY	ø 250 3 spB F.80 (130-155-180-200)		
1	68076600	1	PULEGGIA	POULIE	RIEMENSCHLEIBE	PULLEY	ø 250 4 spB F.80 (230)		
1	68073900	1	PULEGGIA	POULIE	RIEMENSCHLEIBE	PULLEY	ø 250 5 spB F.80 (280)		
2	68060300	1	CALETTATORE	DOUILLE DE SERRAGE	SPANNBUCHSE	LOCKING DEVICE	øi 40 øe 80		
3	68146400		CINGHIA	COURROIE	KEILRIEMEN	BELT	B60 (130-155-180-200-230)		
3	68040900		CINGHIA	COURROIE	KEILRIEMEN	BELT	XPB 1700 (280)		
4	68076600	1	PULEGGIA	POULIE	RIEMENSCHLEIBE	PULLEY	ø 180 3 spB (130-155-180-200)		
4	68060100	1	PULEGGIA	POULIE	RIEMENSCHLEIBE	PULLEY	ø 180 4 spB (230)		
4	68094300	1	PULEGGIA	POULIE	RIEMENSCHLEIBE	PULLEY	ø 225 5 spB (280)		
5	68060000	1	CALETTATORE	DOUILLE DE SERRAGE	SPANNBUCHSE	LOCKING DEVICE	øi 45 øe 80		
6	60023200	12	VITE	VIS	SCHRAUBE	SCREW	TE 14 x 30 UNI 5739 8.8 ZNT		
7	66021500	1	ANELLO TENUTA	JOINT D'ETANCHEITE	DICHTUNGSRING	JUNT RING	55 x 70 x 8		
8	62010800	12	DADO	ECROU	MUTTER	NUT	M 14 x 2 AUTOBLOCC.		
9	40346400	1	SUPPORTO SX	SUPPORT (G)	HALTER (LINKS)	SUPPORT (LH)			
10	32097500	1	DISTANZIALE SX	ENTRETOISE (G)	DISTANZSTÜCK (LINKS)	SPACER (LH)			
11	67018700	1	CUSCINETTO	ROULEMENT	LAGER	BEARING	21311		
12	68129000		SPESSORE	EPAISSEUR	DISTANZRING	SPACER	65 x 85 x 1		
13	39324200	1	PROTEZIONE SX	PROTECTION (G)	SCHUTZ (LINKS)	GUARD (LH)			
14	42084900	1	ROTORE	ROTOR	ROTOR	ROTOR	130		
14	42083000	1	ROTORE	ROTOR	ROTOR	ROTOR	155		
14	42083100	1	ROTORE	ROTOR	ROTOR	ROTOR	180		
14	42083200	1	ROTORE	ROTOR	ROTOR	ROTOR	200		
14	42083300	1	ROTORE	ROTOR	ROTOR	ROTOR	230		
14	42083500	1	ROTORE	ROTOR	ROTOR	ROTOR	280		
15	68011000	1	SPESSORE	EPAISSEUR	DISTANZRING	SPACER	55 x 45 x 1		
16	39129100	1	PROTEZIONE DX	PROTECTION (D)	SCHUTZ (RECHTS)	GUARD (RH)			

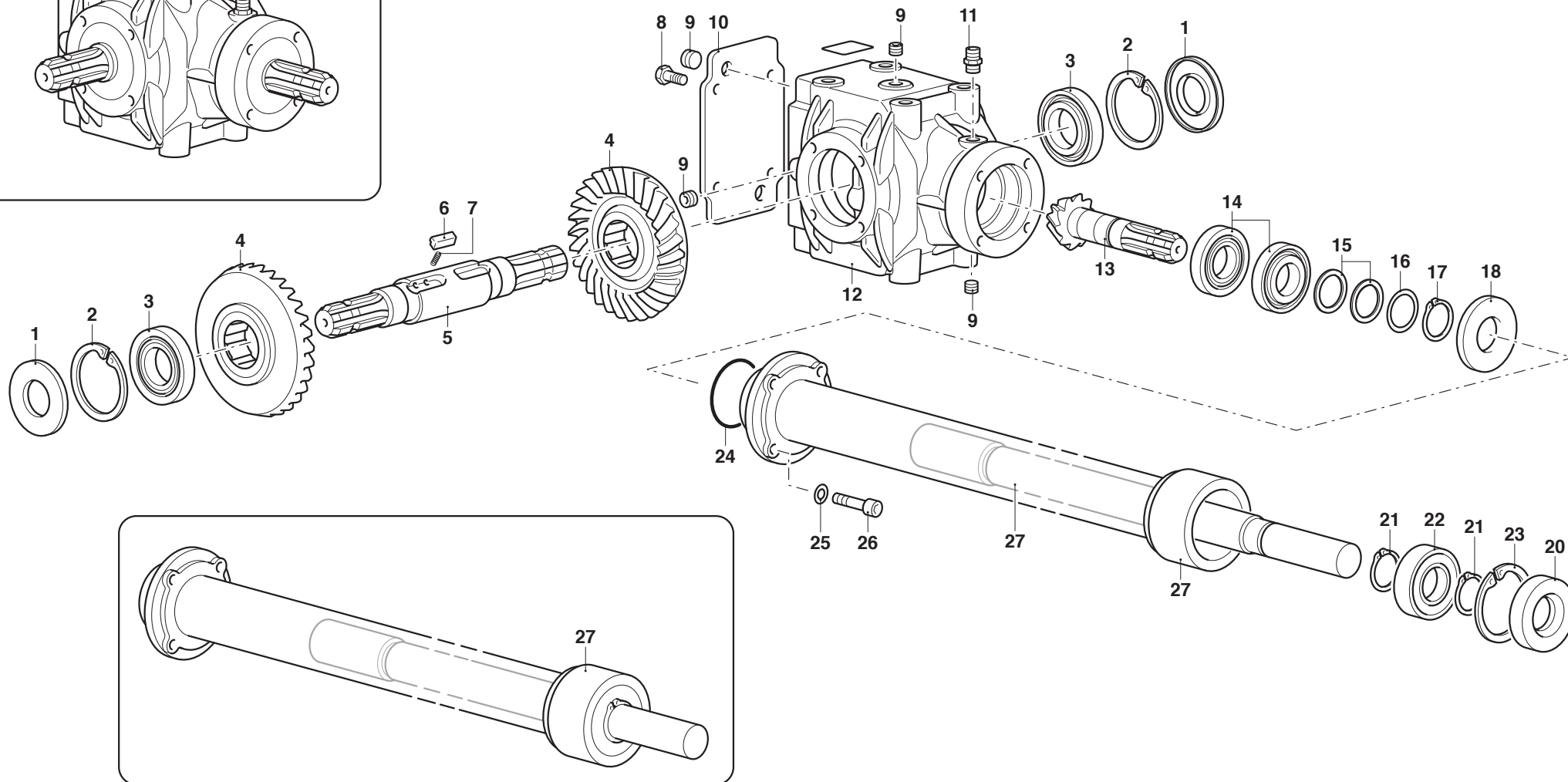
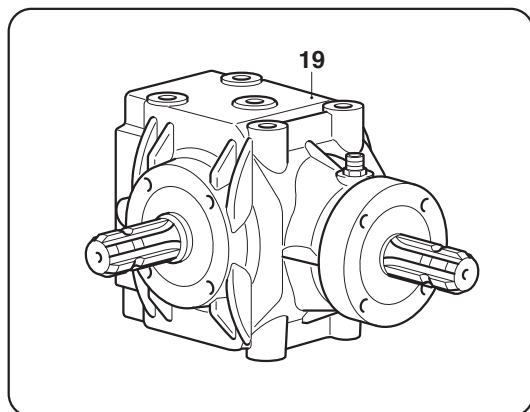




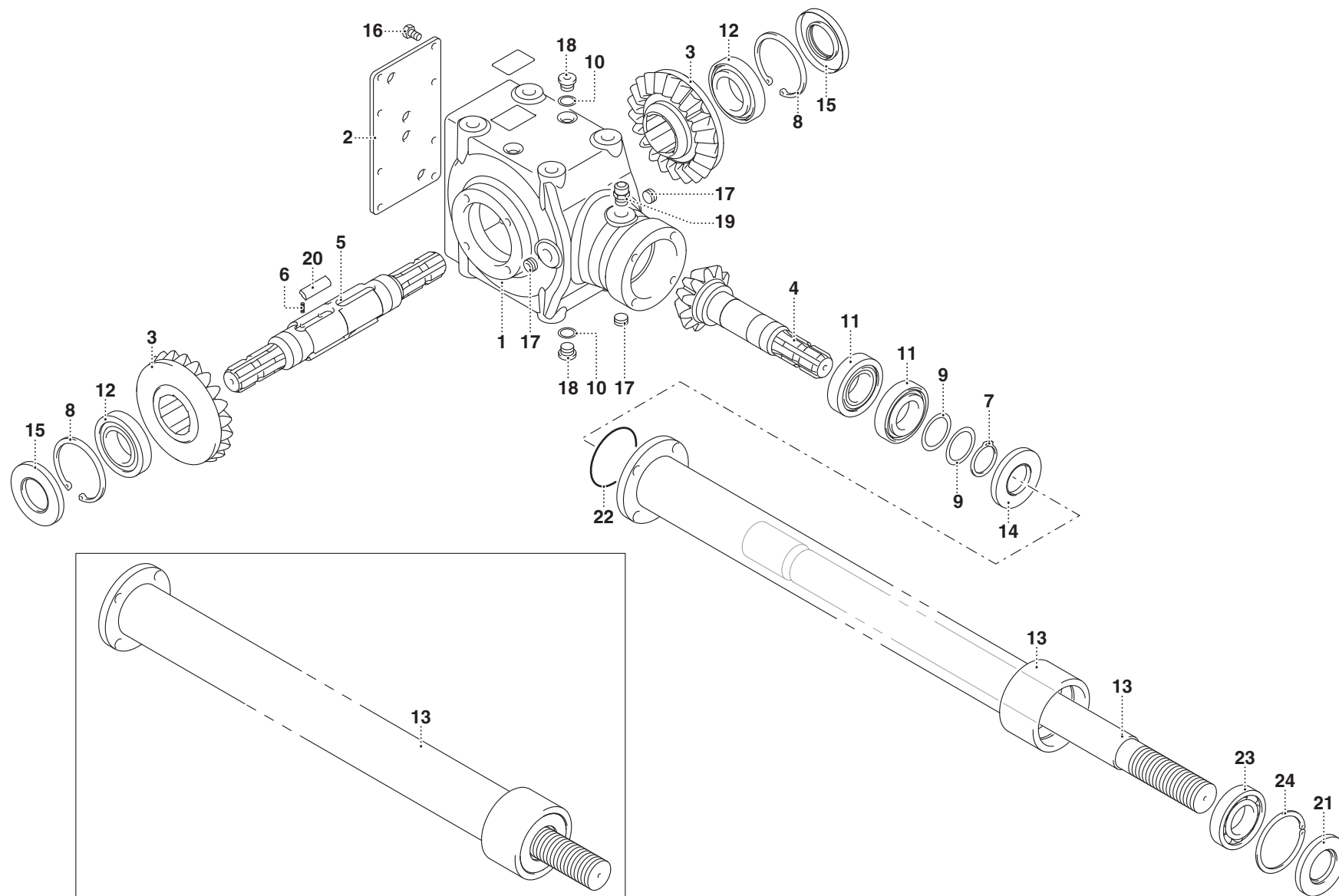


**MURATORI MT 90 (130-155-180-200-230)**
**TAV. 4.0**

POS.	N° CODICE	Q.	DESCRIZIONE	DESIGNATION	BENENNUNG	DESCRIPTION	DESIGNAZIONE	Da matr. De nr. serie Vom Seriennr. From serial nr.	Fino matr. Jusqu'au nr. serie Bis Seriennr. Up to serial nr.
1	66020200	2	ANELLO TENUTA	JOINT D'ETANCHEITE	DICHTUNGSRING	JUNT RING	40 x 80 x 8		
2	64000200	2	ANELLO ELASTICO	ARRETOIR	SPANNRING	SNAP-RING	Ø 80 I UNI 7437		
3	67005200	2	CUSCINETTO	ROULEMENT	LAGER	BEARING	30208		
4	10051200	2	CORONA	COURONNE	KRANZ	CROWN			
5	31100700	1	ALBERO	ARBRE	WELLE	SHAFT			
6	65003700	6	CHIAVETTA	CLAVETTE	SCHLÜSSEL	KEY			
7	68129100	12	MOLLA	RESSORT	FEDER	SPRING			
8	60015100	4	VITE	VIS	SCHRAUBE	SCREW	TE 8 x 16 UNI 5739		
9	68008700	5	TAPPO	BOUCHON	STOPFEN	PLUG	3/8"		
10	03003900	1	COPERCHIO	COUVERCLE	DECKEL	COVER			
11	68085600	1	TAPPO	BOUCHON	STOPFEN	PLUG			
12	01020600	1	SCATOLA	CARTER	GEHÄUSE	GEARBOX			
13	10051300	1	ALBERO	ARBRE	WELLE	SHAFT			
14	67000300	2	CUSCINETTO	ROULEMENT	LAGER	BEARING	30207		
15	68010500	2	SPESSORE	EPAISSEUR	DISTANZRING	SPACER	35 x 40 x 2		
16	68010200	1	SPESSORE	EPAISSEUR	DISTANZRING	SPACER	35 x 45 x 0,2		
17	63006900	1	ANELLO ELASTICO	ARRETOIR	SPANNRING	SNAP-RING	Ø 35 E UNI 7436		
18	66001400	1	ANELLO TENUTA	JOINT D'ETANCHEITE	DICHTUNGSRING	JUNT RING	35 x 80 x 10		
19	46042400	1	SCATOLA MONTATA	BOITIER MONTE	MONTIERTES GEHÄUSE	ASSEMBLED GEARBOX			
20	66019300	1	ANELLO TENUTA	JOINT D'ETANCHEITE	DICHTUNGSRING	JUNT RING	40 x 90 x 10		
21	63000700	2	ANELLO ELASTICO	ARRETOIR	SPANNRING	SNAP-RING	Ø 40 E UNI 7435		
22	67004400	1	CUSCINETTO	ROULEMENT	LAGER	BEARING	6208		
23	63000200	1	ANELLO ELASTICO	ARRETOIR	SPANNRING	SNAP-RING	Ø 80 I UNI 7435		
24	66013100	1	ANELLO TENUTA	JOINT D'ETANCHEITE	DICHTUNGSRING	JUNT RING	OR 176 Ø73,03		
25	61000400	4	RONDELLA	RONDELLE	SCHEIBE	WASHER	DENT. INT. Ø10 UNI 3704		
26	60031700	4	VITE	VIS	SCHRAUBE	SCREW	TCEI 10 x 30 UNI 5931		







## MURATORI MT 90 (280)

TAV. 4.1

POS.	N° CODICE	Q.	DESCRIZIONE	DESIGNATION	BENENNUNG	DESCRIPTION	DESIGNAZIONE	Da matr. De nr. serie Vom Seriennr. From serial nr.	Fino matr. Jusqu'au nr. serie Bis Seriennr. Up to serial nr.
1	01021000	1	SCATOLA	CARTER	GEHÄUSE	GEARBOX			
2	39403800	1	COPERCHIO	COUVERCLE	DECKEL	COVER			
3	10053500	2	CORONA	COURONNE	KRANZ	CROWN			
4	10053600	1	ALBERO	ARBRE	WELLE	SHAFT			
5	10053700	1	ALBERO	ARBRE	WELLE	SHAFT			
6	68087200	12	MOLLA	RESSORT	FEDER	SPRING			
7	63000700	1	ANELLO ELASTICO	ARRETOIR	SPANNRING	SNAP-RING	Ø 40E UNI 7435		
8	63005400	2	ANELLO ELASTICO	ARRETOIR	SPANNRING	SNAP-RING	Ø 85I UNI 7438		
9	68084400	2	SPESSORE	EPAISSEUR	DISTANZRING	SPACER	42 x 52 x 1		
10	61005600	4	RONDELLA	RONDELLE	SCHEIBE	WASHER	3/8" RAME		
11	67005200	2	CUSCINETTO	ROULEMENT	LAGER	BEARING	30208		
12	67008700	2	CUSCINETTO	ROULEMENT	LAGER	BEARING	30209		
13	45122700	1	PROLUNGA	RALLONGE	VERLÄNGERUNGSROHR	EXTENSION	280		
14	66011300	1	ANELLO TENUTA	JOINT D'ETANCHEITE	DICHTUNGSRING	JUNT RING	40 x 80 x 10		
15	66011500	2	ANELLO TENUTA	JOINT D'ETANCHEITE	DICHTUNGSRING	JUNT RING	45 x 85 x 10		
16	60015100	8	VITE	VIS	SCHRAUBE	SCREW	TE 8 x 16 UNI5739		
17	68008700	3	TAPPO	BOUCHON	STOPFEN	PLUG	3/8"		
18	68101700	4	TAPPO	BOUCHON	STOPFEN	PLUG	3/8"		
19	68085600	1	TAPPO	BOUCHON	STOPFEN	PLUG	3/8" CON SFIATO		
20	65002700	6	CHIAVETTA	CLAVETTE	SCHLÜSSEL	KEY			
21	66014900	1	ANELLO TENUTA	JOINT D'ETANCHEITE	DICHTUNGSRING	JUNT RING	40 x 80 x 10		
22	66019500	1	GUARNIZIONE	GARNITURE	DICHTUNG	SEAL	OR 3287		
23	67004400	1	CUSCINETTO	ROULEMENT	LAGER	BEARING	6208		
24	63000200	1	ANELLO ELASTICO	ARRETOIR	SPANNRING	SNAP-RING	Ø 40 I UNI 7437		

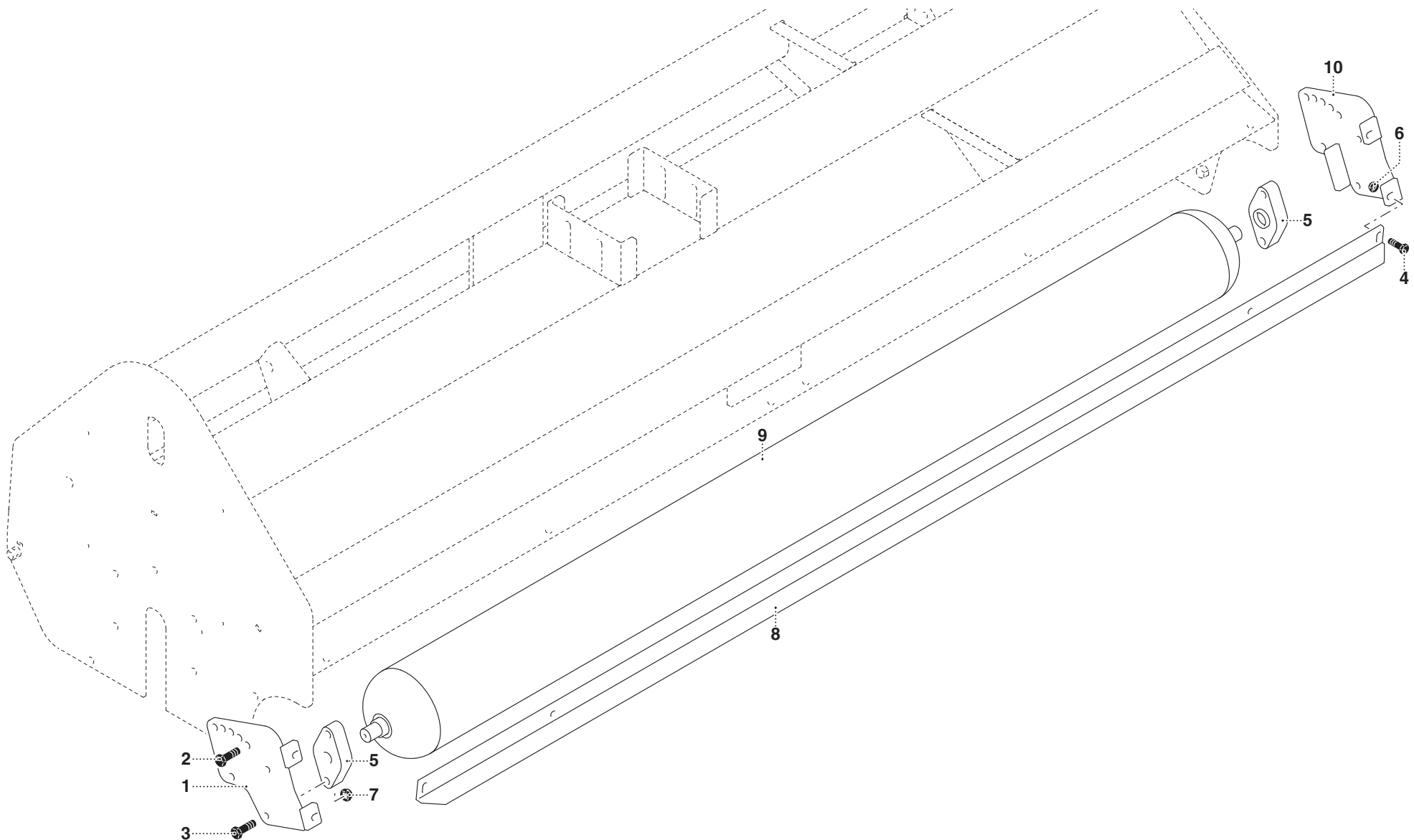


**GRUPPO RULLO POSTERIORE**  
SATZ HINTERE WALZE

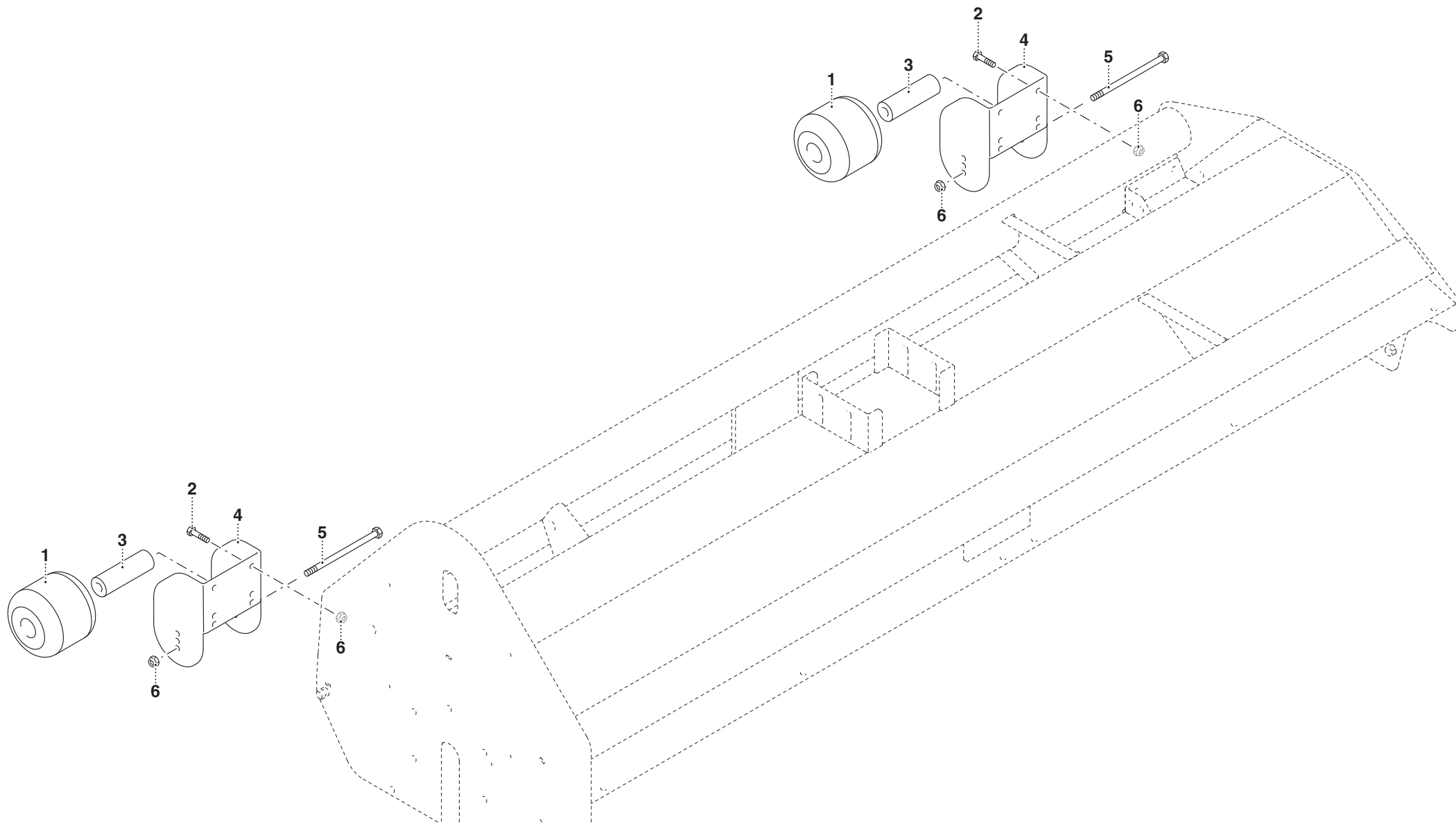
**ENSEMBLE ROULEAU ARRIERE**  
KIT REAR ROLLER

**TAV. 5.0**

**MT 90**









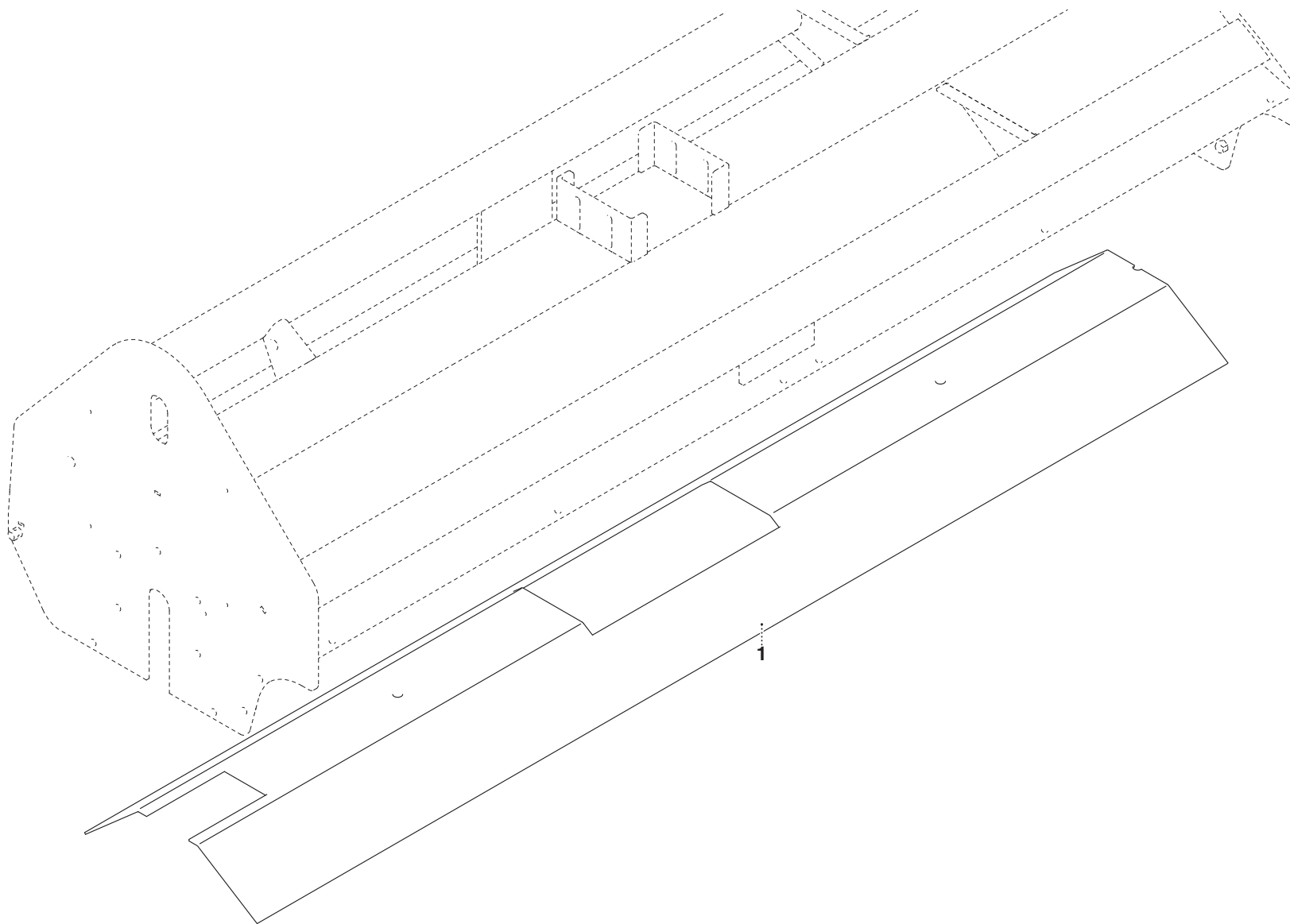


**BLINDATURA**  
*DOPPELRAHMEN*

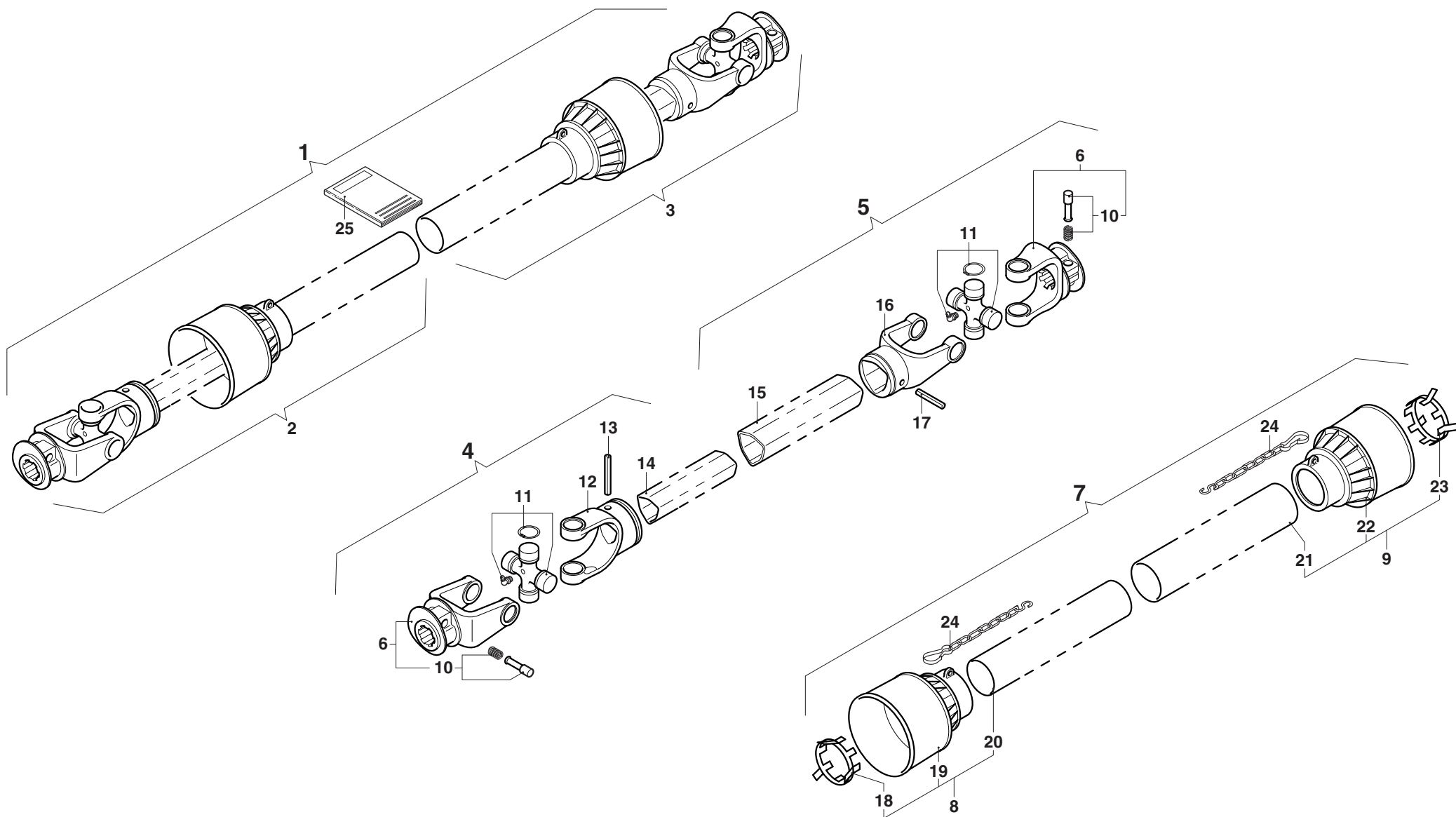
*DOUBLE FRAME*  
*DOUBLE CHASSIS*

**TAV. 7.0**

**MT 90**







## MURATORI MT 90

## TAV. 8.0

POS.	N° CODICE	Q.	DESCRIZIONE	DESIGNATION	BENENNUNG	DESCRIPTION	DESIGNAZIONE	Da matr. De nr. serie Vom Seriennr. From serial nr.	Fino matr. Jusqu'au nr. serie Bis Seriennr. Up to serial nr.
1	A610SF	1	ALBERO CARDANICO COMPLETO	ARBRE A JOINTS DE CARDAN	KARDANWELLE	PTO SHAFT			
2	7116071CE007	1	SEMIALBERO INTERNO	DEMI-ARBRE INTERIEUR	INNENHALBWELLE	INTERNAL HALF SHAFT			
3	7E16071CE007	1	SEMIALBERO ESTERNO	DEMI-ARBRE EXTERIEUR	AUSSENHALBWELLE	EXTERNAL HALF SHAFT			
4	711607100007	1	SEMIALBERO INTERNO	DEMI-ARBRE INTERIEUR	INNENHALBWELLE	INTERNAL HALF SHAFT			
5	7E1607100007	1	SEMIALBERO ESTERNO	DEMI-ARBRE EXTERIEUR	AUSSENHALBWELLE	EXTERNAL HALF SHAFT			
6	5070H0355	2	FORCELLA	FOURCHE	GABEL	YOKE			
7	5F06071FFCE	1	PROTEZIONE	PROTECTION	SCHUTZ	GUARD			
8	5F16071FFCE	1	PROTEZIONE INTERNA	PROTECTION INTERIEURE	INNENSCHUTZ	INTERNAL GUARD			
9	5FE6071FFCE	1	PROTEZIONE ESTERNA	PROTECTION EXTERIEURE		AUSSENSCHUTZ	EXTERNAL GUARD		
10	403000001R10	2	PULSANTE	BOUTON	DRUCKKNOPF	PUSH BOTTON			
11	4120H0011R30	2	CROCIERA	CROISILLON	KREUZSTÜCK	SPIDER			
12	204066852	1	FORCELLA	FOURCHE	GABEL	YOKE			
13	341043000R10	1	SPINA ELASTICA	GOUPILLE ELASTIQUE	SPANNSTIFT	ELASTIC PIN			
14	225160545	1	TUBO INTERNO	TUBE INTERIEUR	INNENROHR	INTERNAL TUBE			
15	225210545	1	TUBO ESTERNO	TUBE EXTERIEUR	AUSSENROHR	EXTERNAL TUBE			
16	204066851	1	FORCELLA	FOURCHE	GABEL	YOKE			
17	341042000R10	1	SPINA ELASTICA	GOUPILLE ELASTIQUE	SPANNSTIFT	ELASTIC PIN			
18	255060006R02	1	GHIERA	FRETTE	NUTMUTTER	RING NUT			
19	517050020	1	CUFFIA	CAPOUCHON	HAUBE	GUARD			
20	236820486	1	TUBO INTERNO	TUBE INTERIEUR	INNENROHR	INTERNAL TUBE			
21	236830486	1	TUBO ESTERNO	TUBE EXTERIEUR	AUSSENROHR	EXTERNAL TUBE			
22	517050030	1	CUFFIA	CAPOUCHON	HAUBE	GUARD			
23	255060005R02	1	GHIERA	FRETTE	NUTMUTTER	RING NUT			
24	252000050R02	2	CATENA	CHAINE	KETTE	CHAIN			
25	399CEE010	1	MANUALE ISTRUZIONI	MANUEL D'UTILISATION ET D'ENTRETIEN	BETRIEBS- UND WARTUNGSANLEITUNG	USE AND MAINTENANCE MANUAL			







**MURATORI S.p.A.**

Via Pavarello, 21 - 41051 Castelnuovo Rangone (MO) Italy - Tel. 059.5330611 Fax 059.537259

[www.muratoriequip.it](http://www.muratoriequip.it) [info@muratoriequip.it](mailto:info@muratoriequip.it)

**Capitale sociale Euro 480.000 interamente versato**

**Registro Imprese di Modena**

**Codice fiscale e numero d'iscrizione: 00708860366**