



MURATORI

**TIPO-TYPE-TYP
MTL 5**

CATALOGO RICAMBI
Catalogue Pièces Detachées
Ersatzteilkatalog
Spare Parts Catalogue
Catálogo Recambios

EDIZIONE 11/2022

Per ordinare parti di ricambio specificare:

- tipo e matricola della macchina (apposti sulla macchina o sui documenti di acquisto);
- numero del riferimento del pezzo nel disegno (Pos.), numero della tavola (Tav.) e numero di codice

N.B.: le indicazioni destro o sinistro vengono date guardando la macchina da dietro.

Pour les commandes de pièces de rechange veuillez spécifier:

- *type et numéro de série de la machine (indiqués sur la machine et sur le bon d'achat);*
- *numéro de référence du pièce sur le plan (Pos.), numéro du plan (Tav.) et numero de code (codice)*

N.B.: *les indications droite ou gauche sont données en regardant la machine par derrière.*

Zum Bestellen von Ersatzteilen folgendes angeben:

- *Typ und Serien-Nr. der Maschine (zu finden auf der Maschine oder der Einkaufspapieren);*
- *Bezug-Nr. des Ersatzteils auf der Zeichnung (Pos.), Zeichnungsnummer (Tav.) und Kodenummer (codice)*

N.B.: *Die Angaben rechts und links verstehen sich so, dass man hinter der Maschine steht.*

When ordering spare parts specify:

- machine type and serial number (found on the machine or on the purchasing documents);
- reference number of the part on the relative drawing (Pos.) number of the drawing (Tav.) and part number (codice)

N.B.: right-hand or left-hand indications are made by viewing the machine from the rear.

TAV. 1.0

GRUPPO TELAIO
ENSEMBLE CHASSIS
SATZ FÜR RAHMEN
KIT FOR FRAME

TAV. 2.0

GRUPPO TRASMISSIONE ROTORE
ENSEMBLE TRANSMISSION ROTORS
SATZ FÜR DEN ROTARONTRIEB
KIT FOR THE ROTOR TRANSMISSION

TAV. 3.0

GRUPPO RULLO POSTERIORE
ENSEMBLE ROULEAU ARRIERE
SATZ HINTERE WALZE
KIT REAR ROLLER

TAV. 4.0

GRUPPO MOLTIPLICATORE
ENSEMBLE MULTIPLICATEUR
SATZ FÜR GETRIEBE
KIT FOR GEAR BOX

TAV. 5.0

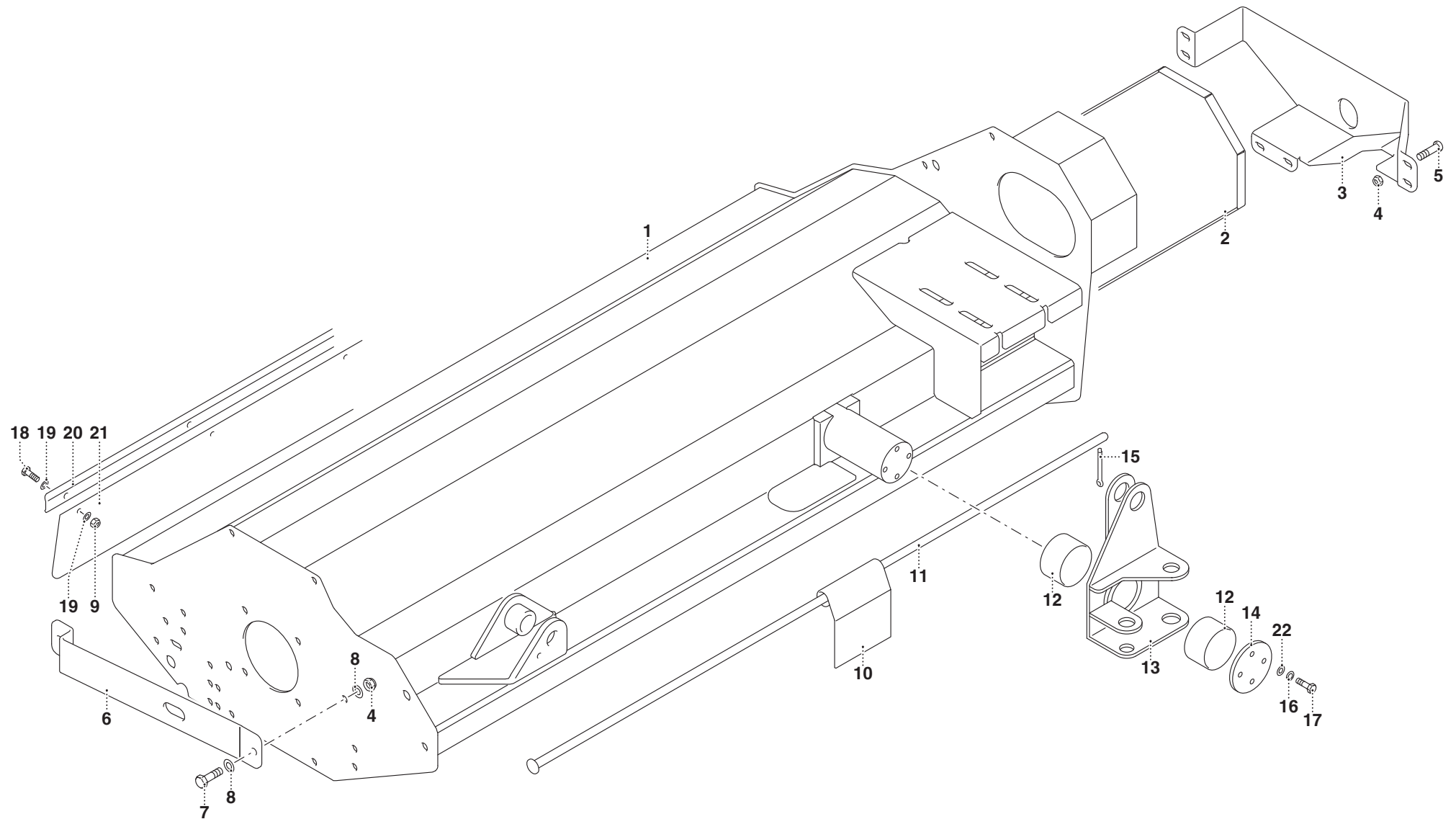
ATTACCO 3-PUNTI E SPOSTAMENTO
ATTELAGE 3-POINTS ET DEPLACEMENT
3-PUNKT-ANSCHLUSS UND VERSCHIEBUNG
3-POINT-HITCH AND OFFSET SYSTEM

TAV. 6.0

ACCESSORI A COMPLETAMENTO
OPTIONS D'ACHEVEMENT
ZUBEHÖRE ZUR ERGANZUNG DER MASCHINE
CHOICE OF EQUIPMENT COMPL. MACHINE

TAV. 7.0

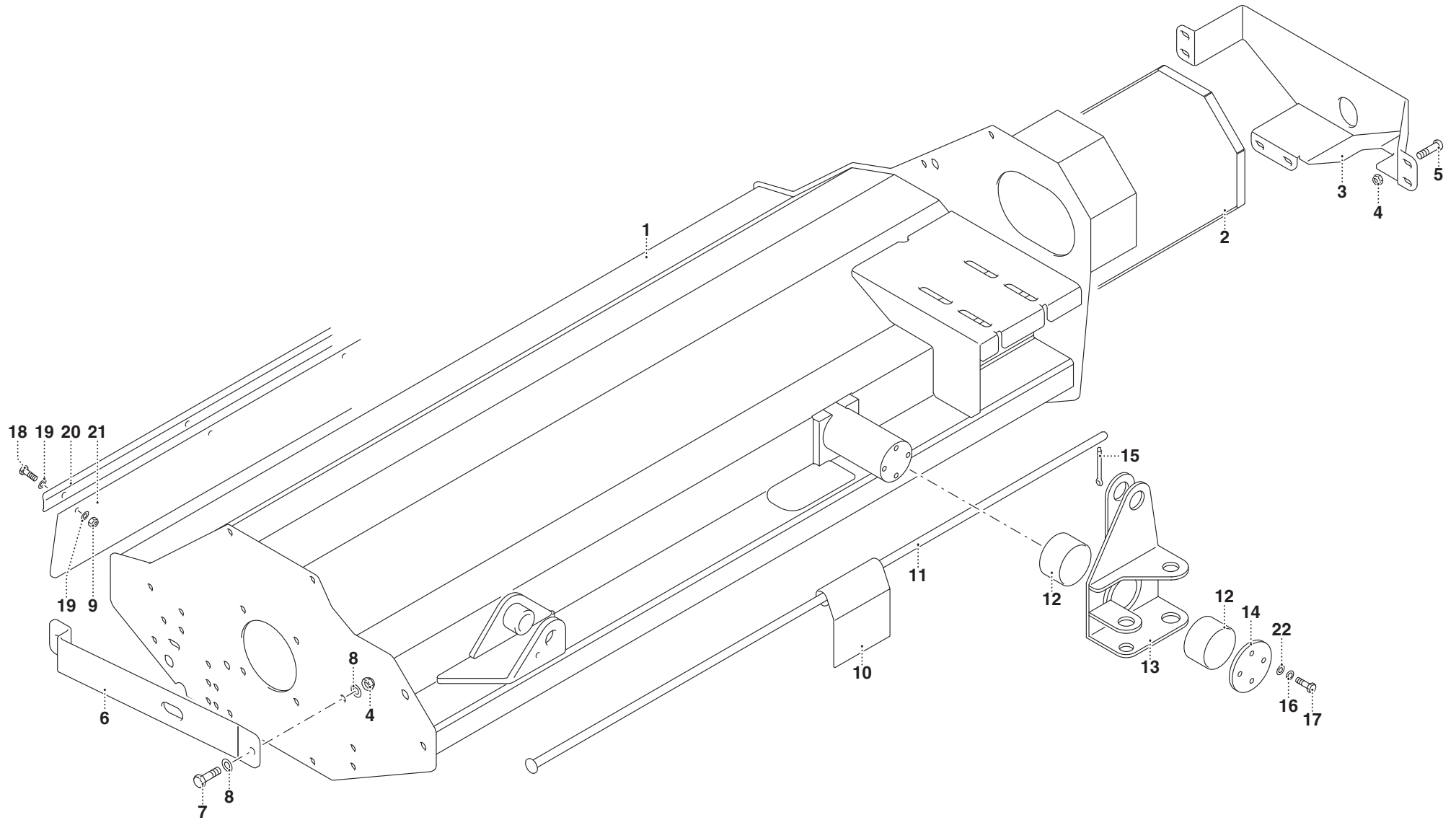
ALBERO CARDANICO COMPLETO - OPTIONAL -
AE620SFJJ
ARBRE A JOINTS DE CARDAN - OPTIONAL - AE620SFJJ
KARDANWELLE - OPTIONAL - AE620SFJJ
PTO SHAFT - OPTIONAL - AE620SFJJ

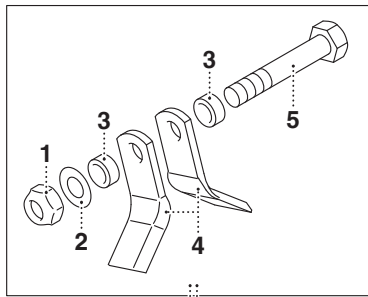


MURATORI MTL 5

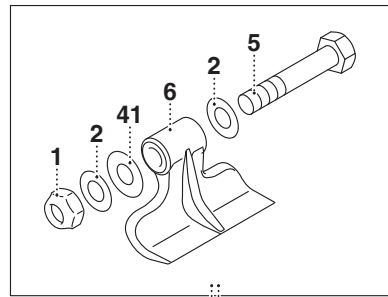
TAV. 1.0

POS.	N° CODICE	Q.	DESCRIZIONE	DESIGNATION	BENENNUNG	DESCRIPTION	DESIGNAZIONE	Da matr. De nr. serie Vom Seriennr. From serial nr.	Fino matr. Jusqu'au nr. serie Bis Seriennr. Up to serial nr.
1	41139600	1	TELAIO	CHASSIS	RAHMEN	FRAME	135		
1	41139610	1	TELAIO	CHASSIS	RAHMEN	FRAME	165		
1	41139620	1	TELAIO	CHASSIS	RAHMEN	FRAME	200		
2	39400000	1	CARTER	CARTER	KETTENKASTEN	CASING			
3	40356300	1	PROTEZIONE	PROTECTION	SCHUTZ	GUARD			
4	62001100	8	DADO	ECROU	MUTTER	NUT	M12 UNI 7474 FE ZNT		
5	60048800	6	VITE	VIS	SCHRAUBE	SCREW	VITE TBCE 12x40 ZNT		
6	39399900	1	PROTEZIONE DX	PROTECTION (D)	SCHUTZ (R)	GUARD (RH)			
7	60048800	2	VITE	VIS	SCHRAUBE	SCREW	VITE TBCE 12x40 ZNT		
8	61005000	4	RONDELLA	RONDELLE	SCHEIBE	WASHER	PIANA Ø12 UNI 6592 ZNT		
9	62010200		DADO	ECROU	MUTTER	NUT	M8 AUTOBLOCC.		
10	39399800	1	BANDELLA	BANDE	BAND	STRAP			
11	31108400	1	ASTA	TIGE	STANGE	ROD	135		
11	31108410	1	ASTA	TIGE	STANGE	ROD	165		
11	31108420	1	ASTA	TIGE	STANGE	ROD	200		
12	32213500	2	BOCCOLA	DOUILLE	BUCHSE	BUSHING			
13	40356900	1	SNODO	ARTICULATION	GELENK	ARTICULATION			
14	39400500	1	PIASTRA	PLAQUE	PLATTE	PLATE			
15	64000300	1	COPIGLIA	COUPILLE	SPLINT	COTTER PIN	Ø4		
16	61001500	4	RONDELLA	RONDELLE	SCHEIBE	WASHER	ELASTICA Ø10 ZNT		
17	60021300	4	VITE	VIS	SCHRAUBE	SCREW	M10x30 ZNT 5739		
18	60030600		VITE	VIS	SCHRAUBE	SCREW	M8x30 ZNT 5739		
19	61004700		RONDELLA	RONDELLE	SCHEIBE	WASHER	PIANA Ø8 ZNT		
20	30220900		ATTACCO	ATTACHE	ANSCHLUSS	ATTACHMENT	135		
20	30221000		ATTACCO	ATTACHE	ANSCHLUSS	ATTACHMENT	165		
20	30221100		ATTACCO	ATTACHE	ANSCHLUSS	ATTACHMENT	200		

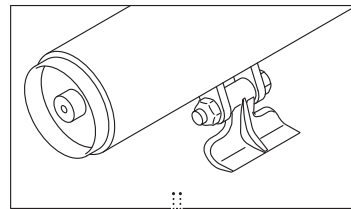




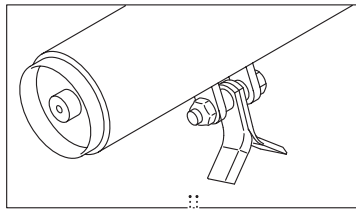
42



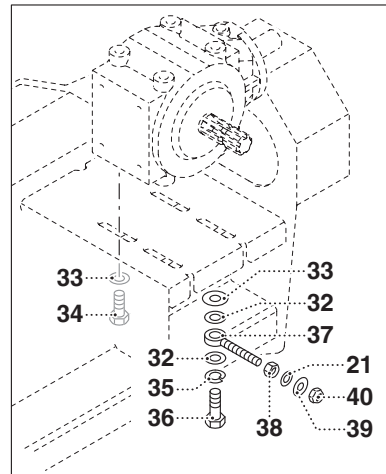
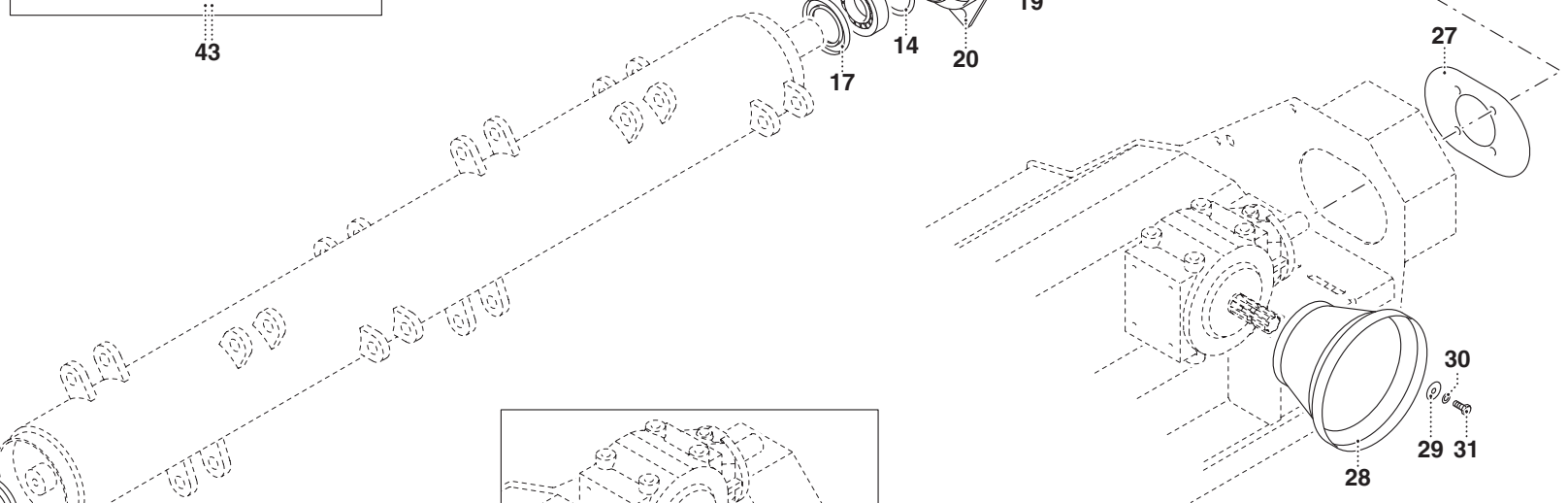
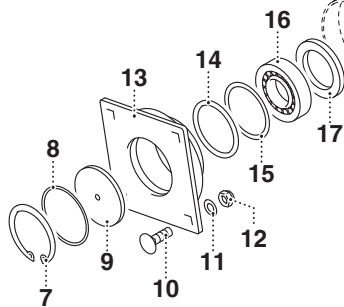
43



18



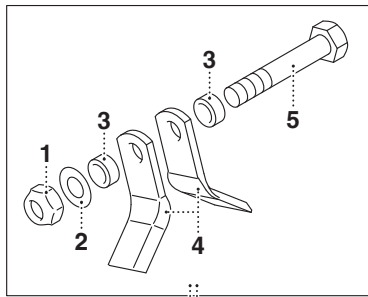
44



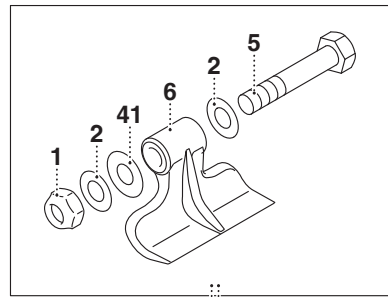
MURATORI MTL 5

TAV. 2.0

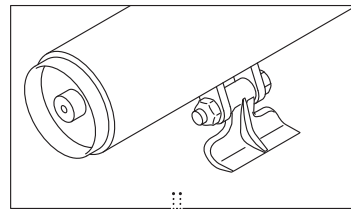
POS.	N° CODICE	Q.	DESCRIZIONE	DESIGNATION	BENENNUNG	DESCRIPTION	DESIGNAZIONE	Da matr. De nr. serie Vom Seriennr. From serial nr.	Fino matr. Jusqu'au nr. serie Bis Seriennr. Up to serial nr.
1	61011000		DADO	ECROU	MUTTER	NUT	M16 AUTOBLOCC.		
2	61006500		RONDELLA	RONDELLE	SCHEIBE	WASHER	PIANA Ø16 6592 ZNT		
3	32204800		BOCCOLA	DOUILLE	BUCHSE	BUSHING			
4	12022800		COLTELLO	COUTEAU	MESSER	KNIFE			
5	60048300		VITE	VIS	SCHRAUBE	SCREW	M16x105 12.9		
6	12022700		MAZZA	MARTEAUX	HAMMER	HAMMER			
7	63005500	1	ANELLO ELASTICO	BAGUE	SPANNRING	SNAP-RING	I 100 DIN472		
8	66021900	1	GUARNIZIONE	GARNITURE	DICHTUNG	SEAL	OR 4375		
9	39399700	1	DISCO	DISQUE	SCHEIBE	DISC			
10	60023200	8	VITE	VIS	SCHRAUBE	SCREW	TE 14x35 8.8 ZNT 5739		
11	61006600	8	RONDELLA	RONDELLE	SCHEIBE	WASHER	PIANA Ø14 ZNT		
12	62000300	8	DADO	ECROU	MUTTER	NUT	M14 UNI 7474 FE ZNT		
13	40356200	1	SUPPORTO DX	SUPPORT (D)	HALTER (R)	SUPPORT (RH)			
14	68146700	2	SPESSORE	EPAISSEUR	DISTANZRING	SPACER	85x99x3		
15	68146800		SPESSORE	EPAISSEUR	DISTANZRING	SPACER	85x99x1		
16	67014500	2	CUSCINETTO	ROULEMENT	LAGER	BEARING	1309		
17	66001300	2	ANELLO TENUTA	JOINT D'ETANCHEITE	DICHTUNGSRING	JUNT RING	65x100x10		
18	45224500	1	ROTORE A MAZZE	ROTOR AVEC MARTEAUX	ROTORWELLE MIT HAMMER	ROTOR SHAFT WITH HAMMERS 135			
18	45224510	1	ROTORE A MAZZE	ROTOR AVEC MARTEAUX	ROTORWELLE MIT HAMMER	ROTOR SHAFT WITH HAMMERS 165			
18	45224520	1	ROTORE A MAZZE	ROTOR AVEC MARTEAUX	ROTORWELLE MIT HAMMER	ROTOR SHAFT WITH HAMMERS 200			
19	66004500	1	ANELLO TENUTA	JOINT D'ETANCHEITE	DICHTUNGSRING	JUNT RING	45x60x7		
20	40356100	1	SUPPORTO SX	SUPPORT (G)	HALTER (L)	SUPPORT (LH)			
21	61005000	2	RONDELLA	RONDELLE	SCHEIBE	WASHER	PIANA Ø12 ZNT		
22	68016200	1	PULEGGIA	POULIE	RIEMENSCHIEBE	PULLEY	4G.SP.B 200 F.65		
23	68114400	1	CALETTATORE	DOUILLE DE SERRAGE	SPANNBUCHSE	LOCKING DEVICE	33x65		
24	68116100	4	CINGHIA	COURROIE	KEILRIEMEN	BELT	SPBX 1400		



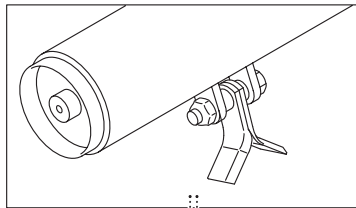
42



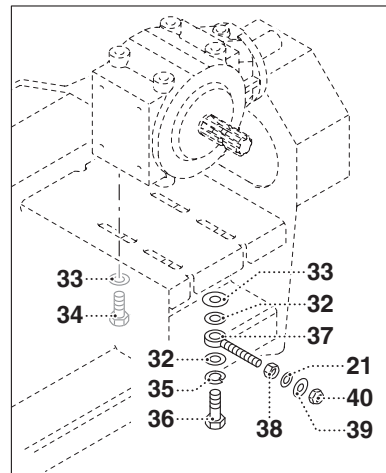
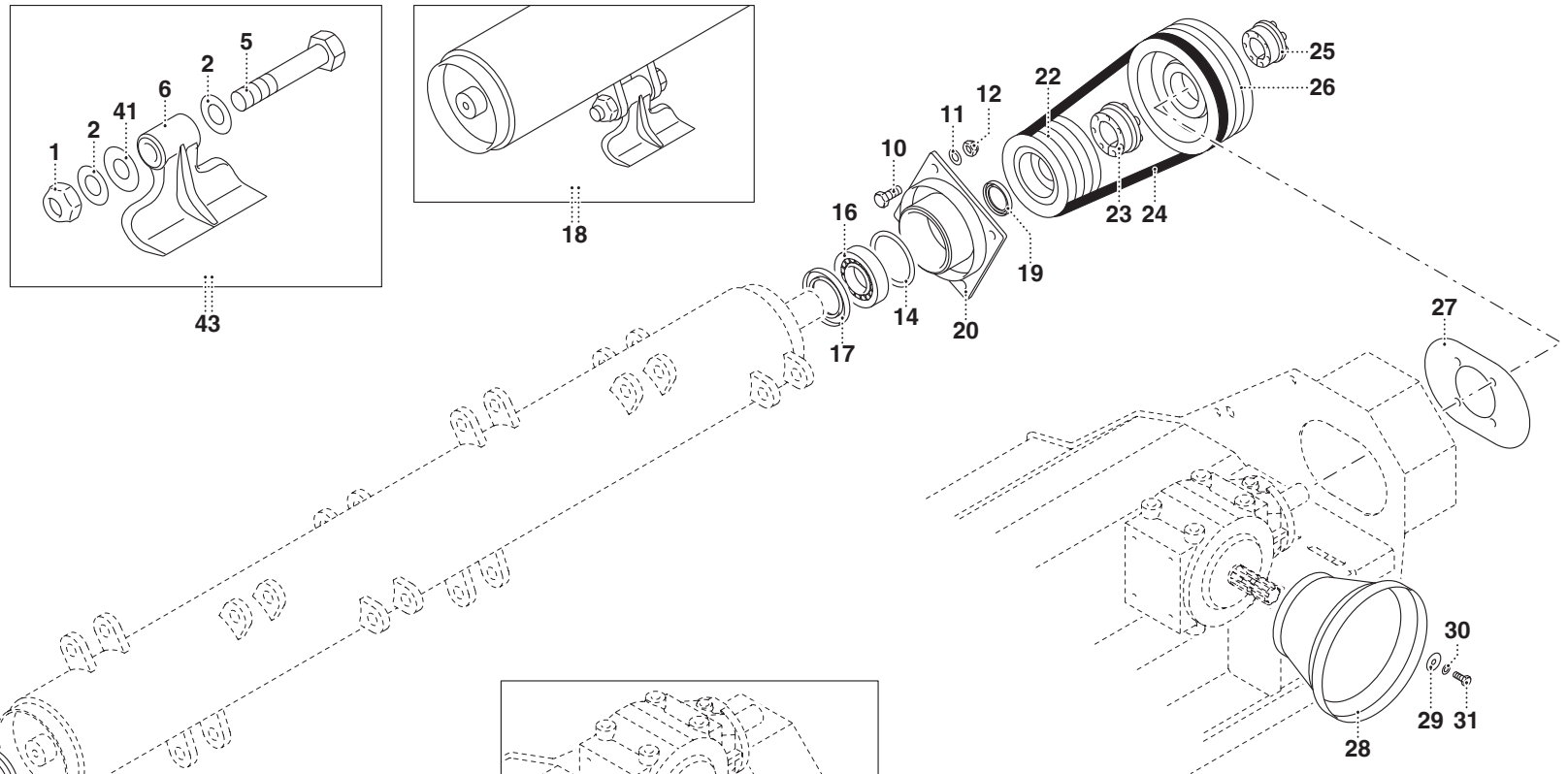
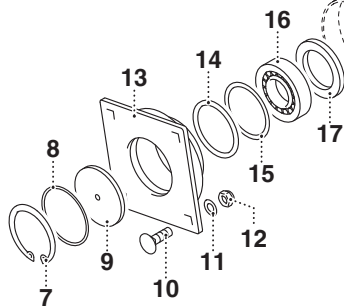
43



18



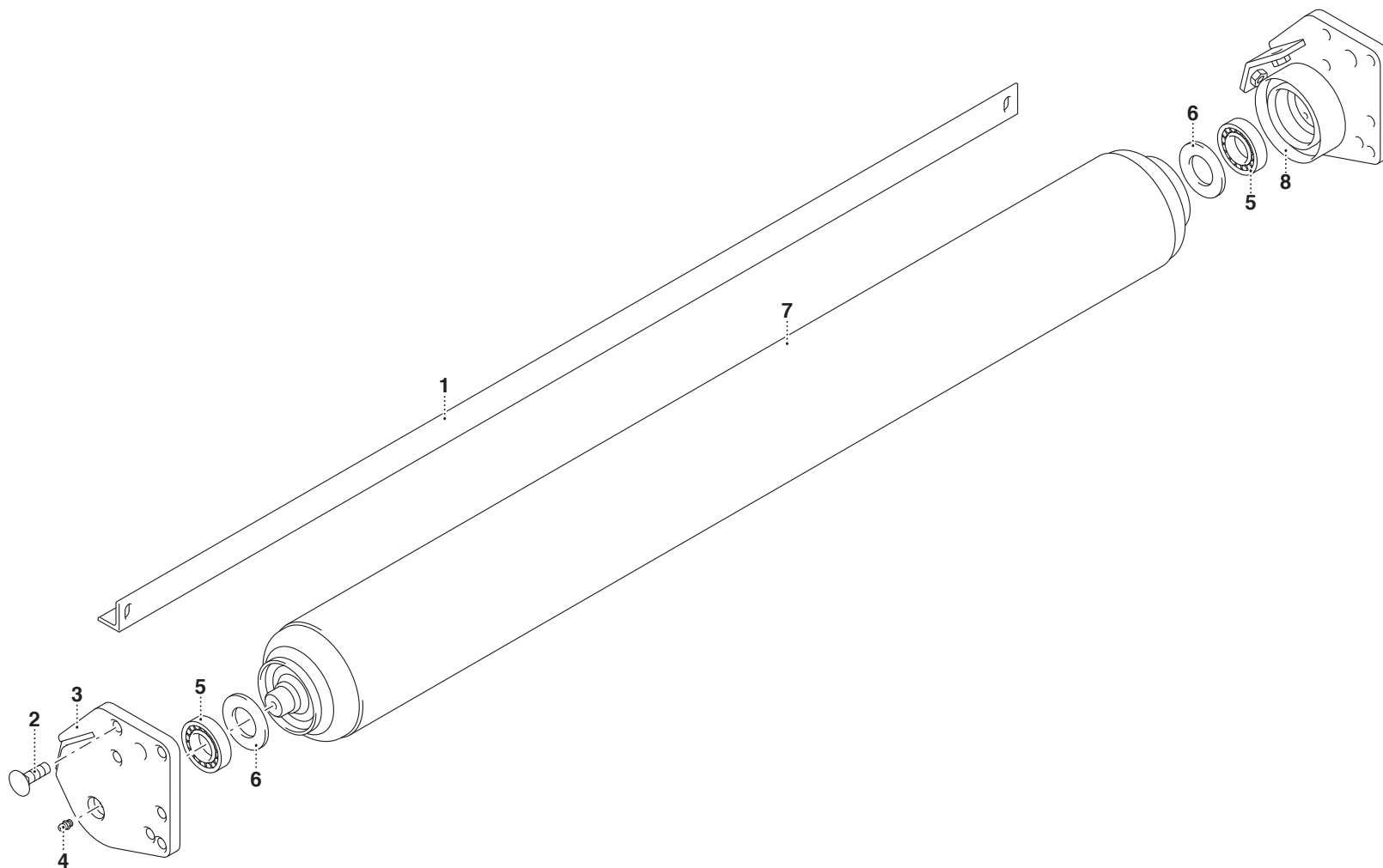
44

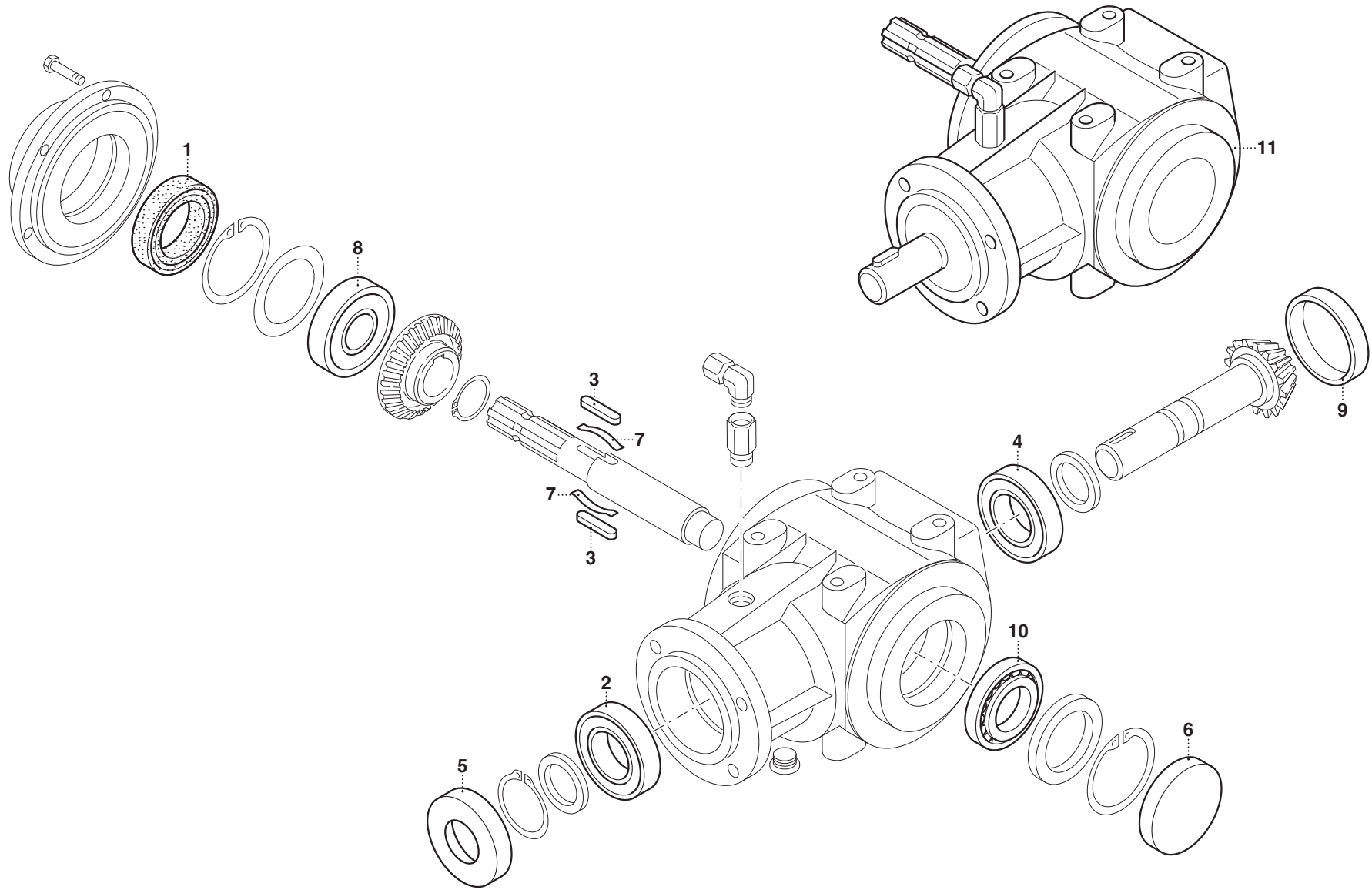


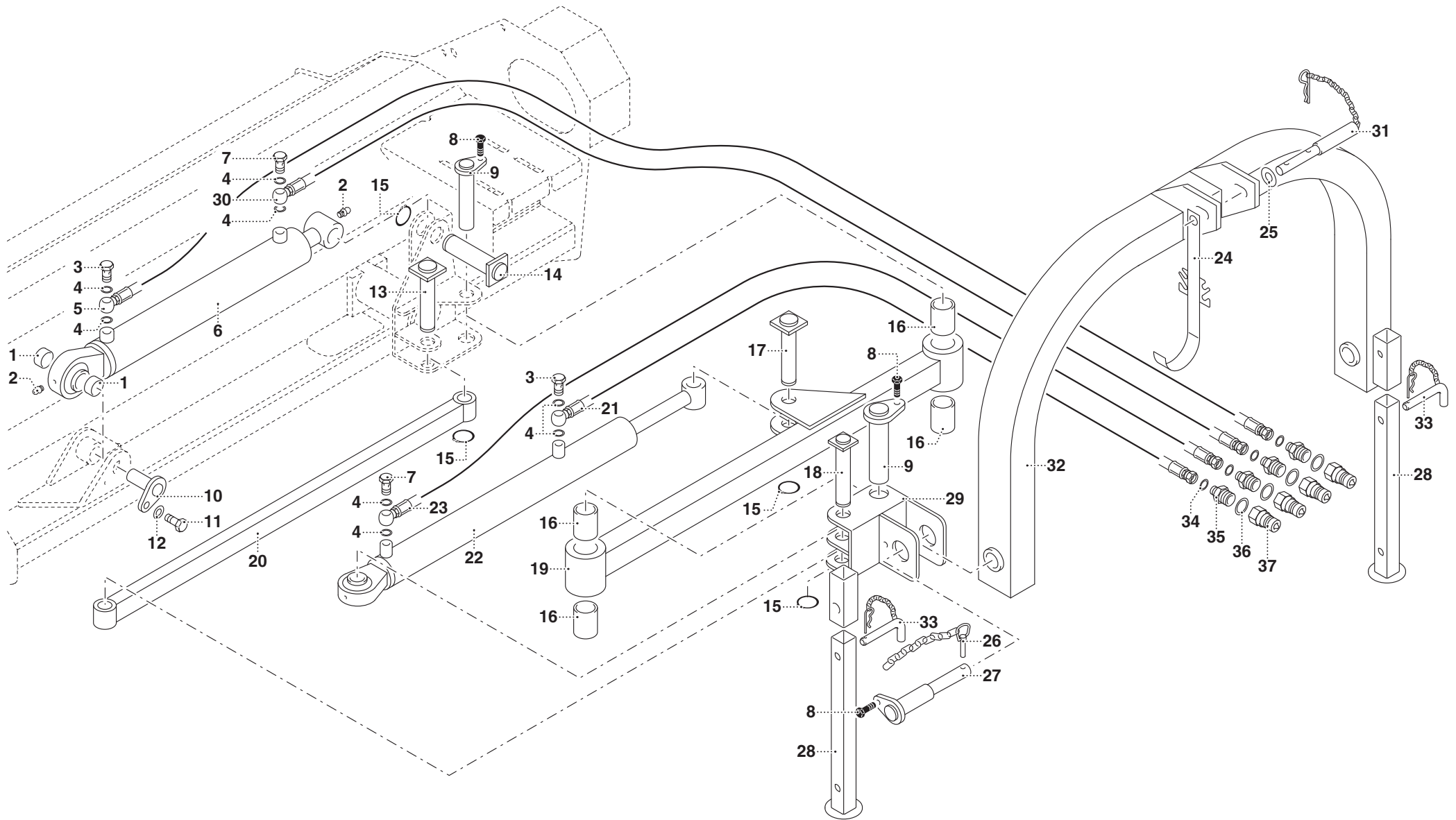
MURATORI MTL 5

TAV. 2.0

POS.	N° CODICE	Q.	DESCRIZIONE	DESIGNATION	BENENNUNG	DESCRIPTION	DESIGNAZIONE	Da matr. De nr. serie Vom Seriennr. From serial nr.	Fino matr. Jusqu'au nr. serie Bis Seriennr. Up to serial nr.
25	68060000	1	CALETTATORE	DOUILLE DE SERRAGE	SPANNBUCHSE	LOCKING DEVICE	45x80		
26	68010200	1	PULEGGIA	POULIE	RIEMENSCHLEIBE	PULLEY	4G.SPB 140 F.80		
27	39400100	1	CHIUSURA	FERMATURE	VERSCHLUSS	LOCK			
28	68061501	1	PROTEZIONE	PROTECTION	SCHUTZ	GUARD			
29	61006200	2	RONDELLA	RONDELLE	SCHEIBE	WASHER	PIANA Ø9 ZNT		
30	61002500	2	RONDELLA	RONDELLE	SCHEIBE	WASHER	ELASTICA Ø8 ZNT		
31	60022800	2	VITE	VIS	SCHRAUBE	SCREW	TE M8x20 8.8 ZNT 5739		
32	61006500	2	RONDELLA	RONDELLE	SCHEIBE	WASHER	PIANA Ø16 ZNT UNI6592		
33	61006500	3	RONDELLA	RONDELLE	SCHEIBE	WASHER	D.16x50		
34	60045900	2	VITE	VIS	SCHRAUBE	SCREW	TE 16x35 ZNT UNI5739		
35	61006400	2	RONDELLA	RONDELLE	SCHEIBE	WASHER	ELASTICA Ø16 ZNT		
36	60042400	2	VITE	VIS	SCHRAUBE	SCREW	TE 16x45 ZNT UNI5739		
37	40356600	2	TIRANTE	TIRANT	STANGE	TIEROD			
38	62009100	2	DADO	ECROU	MUTTER	NUT	M12 UNI 5588 ZNT		
39	61007500	2	RONDELLA	RONDELLE	SCHEIBE	WASHER	Ø12x36x2,5		
40	62001100	2	DADO	ECROU	MUTTER	NUT	M12 UNI 5589		
41	61011600		RONDELLA	RONDELLE	SCHEIBE	WASHER	PIANA Ø16x35x4 ZNT		
42	45224400	1	KIT COLTELLI	JEU DE COUTEAUX Y	KIT Y-MESSER	SET OF Y-MESSER	135		
42	45224410	1	KIT COLTELLI	JEU DE COUTEAUX Y	KIT Y-MESSER	SET OF Y-MESSER	165		
42	45224420	1	KIT COLTELLI	JEU DE COUTEAUX Y	KIT Y-MESSER	SET OF Y-MESSER	200		
43	45224300	1	KIT MAZZE	JEU DE MARTEAUX	KIT HAMMERSCHLEGEL	SET OF HAMMERS	135		
43	45224310	1	KIT MAZZE	JEU DE MARTEAUX	KIT HAMMERSCHLEGEL	SET OF HAMMERS	165		
43	45224320	1	KIT MAZZE	JEU DE MARTEAUX	KIT HAMMERSCHLEGEL	SET OF HAMMERS	200		
44	45224600	1	ROTORE A COLTELLI	ROTOR	ROTOR	ROTOR	135		
44	45224610	1	ROTORE A COLTELLI	ROTOR	ROTOR	ROTOR	165		
44	45224720	1	ROTORE A COLTELLI	ROTOR	ROTOR	ROTOR	200		



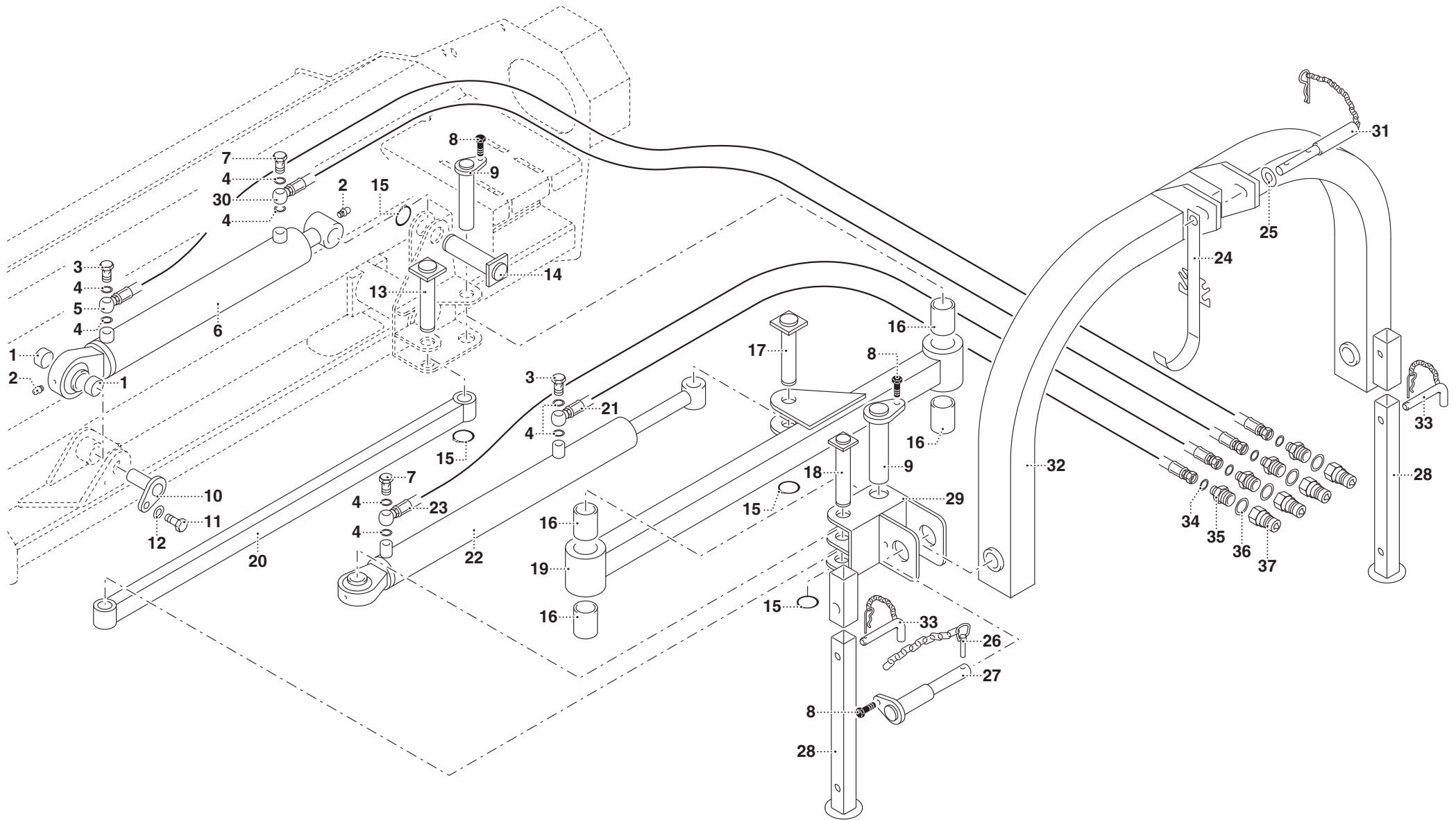


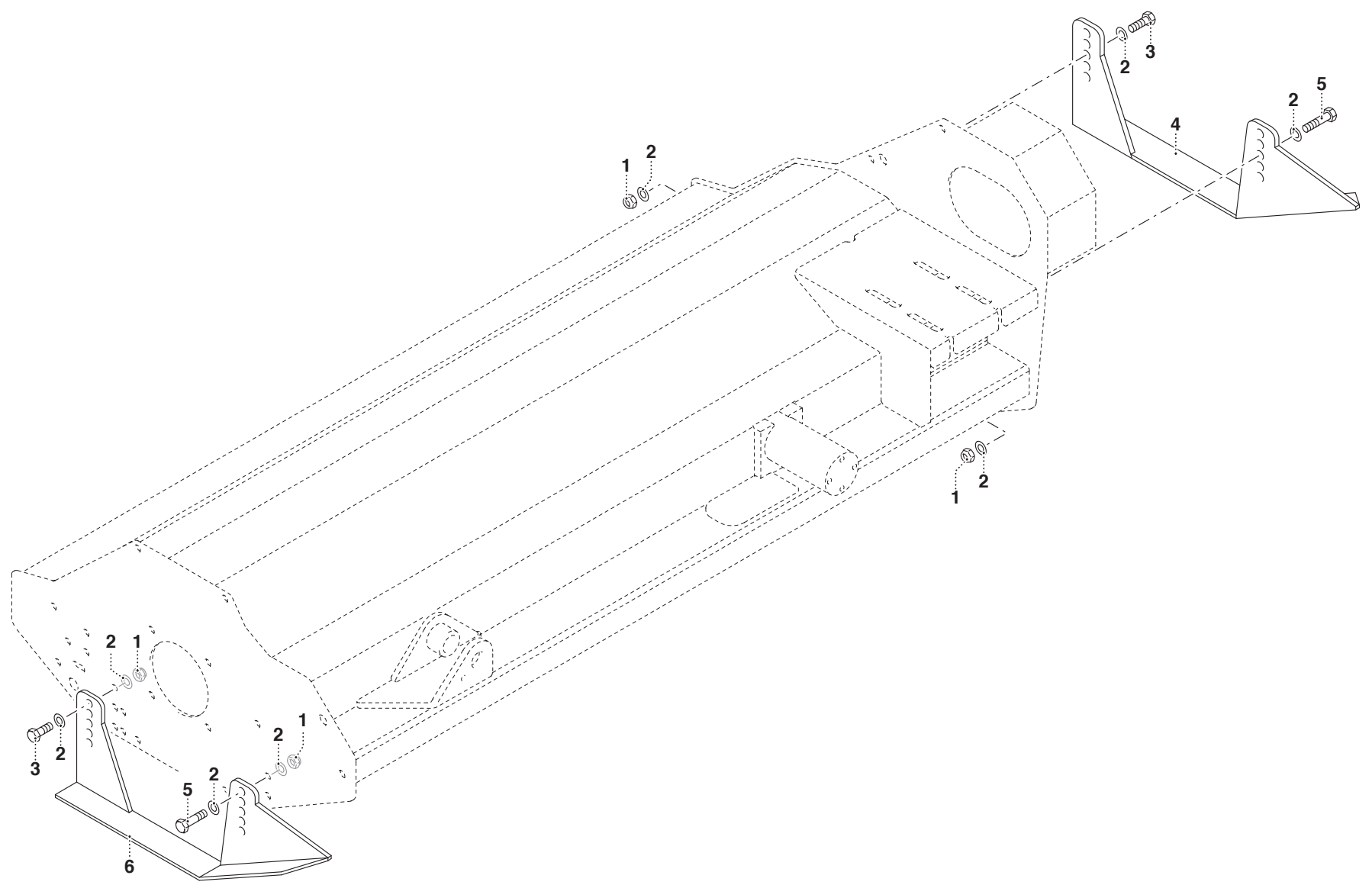


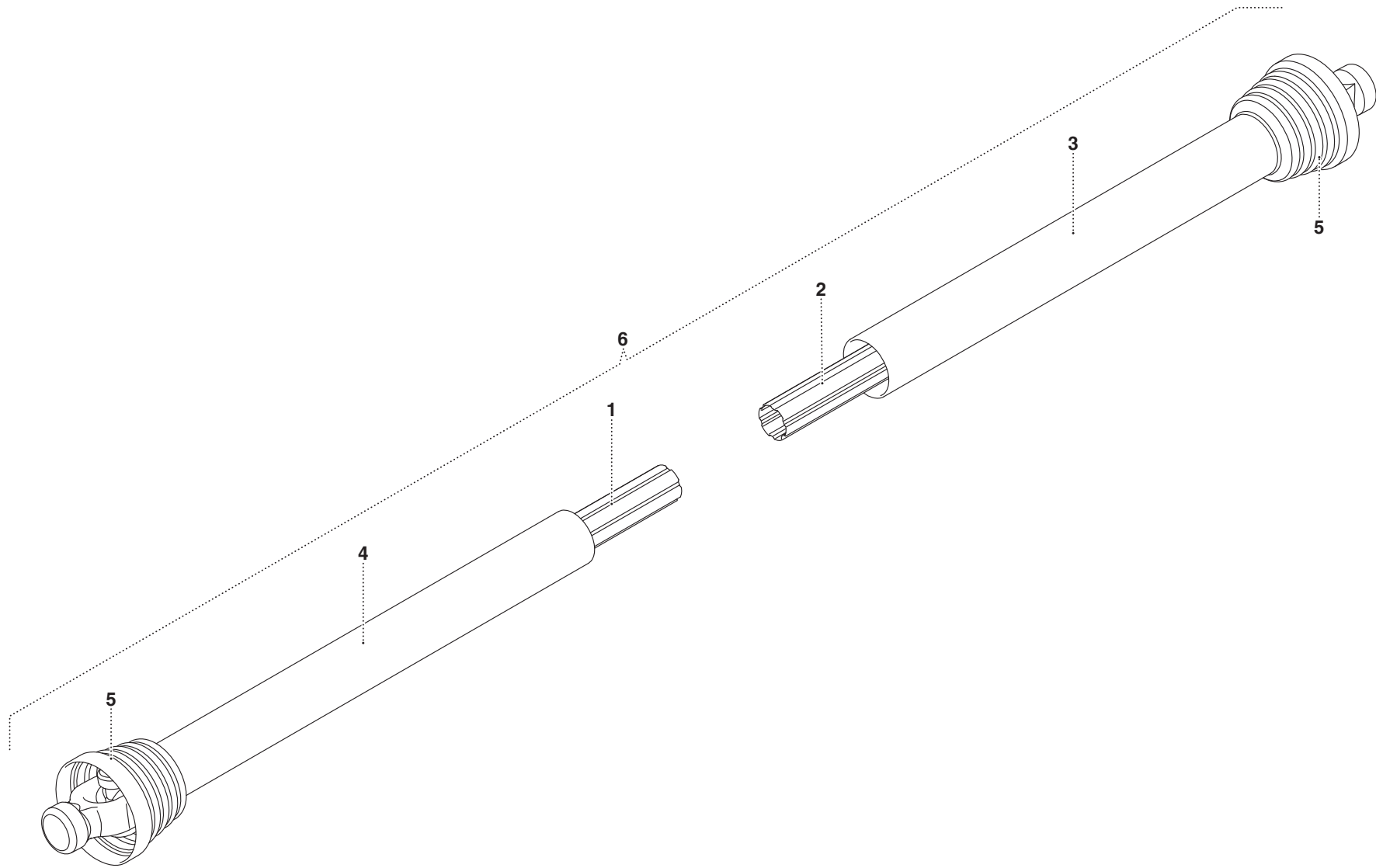
MURATORI MTL 5

TAV. 5.0

POS.	N° CODICE	Q.	DESCRIZIONE	DESIGNATION	BENENNUNG	DESCRIPTION	DESIGNAZIONE	Da matr. De nr. serie Vom Seriennr. From serial nr.	Fino matr. Jusqu'au nr. serie Bis Seriennr. Up to serial nr.
1	32213700	2	BOCCOLA	DOUILLE	BUCHSE	BUSHING			
2	64005300	2	INGRASSATORE	GRAISSEUR	SCHMIERNIPPEL	GREASE FITTING	M8x1 DIRITTO		
3	68148000	1	VITE	VIS	SCHRAUBE	SCREW	FORATA 3/8"		
4	61005600	4	RONDELLA	RONDELLE	SCHEIBE	WASHER	RAME 3/8"		
5	68147701	1	TUBO FLESSIBILE	TUYAU FLEXIBLE	SCHLAUCH	HOSE			
6	68147500	1	CILINDRO	CYLINDRE	ZYLINDER	CYLINDER			
7	68148100	2	VITE	VIS	SCHRAUBE	SCREW	STROZZATA 3/8" 1mm		
8	60020400	3	VITE	VIS	SCHRAUBE	SCREW	TE M12x25 ZNT UNI 5739 ZNT		
9	40356700	2	PERNO	PIVOT	BOLZEN	PIN			
10	40358100	1	PERNO	PIVOT	BOLZEN	PIN			
11	60023000	1	VITE	VIS	SCHRAUBE	SCREW	M12x30 ZNT UNI 5739		
12	61005000	1	RONDELLA	RONDELLE	SCHEIBE	WASHER	PIANA Ø12 ZNT UNI 6592		
13	40356800	1	PERNO	PIVOT	BOLZEN	PIN			
14	40357200	1	PERNO	PIVOT	BOLZEN	PIN			
15	63000400	4	ANELLO ELASTICO	BAGUE	SPANNRING	SNAP-RING	Ø30 E UNI 7435		
16	32213600	4	BOCCOLA	DOUILLE	BUCHSE	BUSHING			
17	40357100	1	PERNO	PIVOT	BOLZEN	PIN			
18	40357900	1	PERNO	PIVOT	BOLZEN	PIN			
19	40357000	1	BRACCIO	BRAS	ARM	ARM			
20	40358000	1	MONTANTE	MONTANT	SÄULE	PILLAR			
21	68147600	1	TUBO FLESSIBILE	TUYAU FLEXIBLE	SCHLAUCH	HOSE			
22	68147400	1	CILINDRO	CYLINDRE	ZYLINDER	CYLINDER			
23	68147700	1	TUBO FLESSIBILE	TUYAU FLEXIBLE	SCHLAUCH	HOSE			
24	30221200	1	GANCIO	CROCHET	HAKEN	HOOK			
25	61005800	1	RONDELLA	RONDELLE	SCHEIBE	WASHER	PIANA Ø20		
26	64005600	2	SPINA	GOUPILLE	STIFT	PIN			









MURATORI S.p.A.

Via Pavarello, 21 - 41051 Castelnuovo Rangone (MO) Italy - Tel. 059.5330611 Fax 059.537259

www.muratoriequip.it info@muratoriequip.it

Capitale sociale Euro 480.000 interamente versato

Registro Imprese di Modena

Codice fiscale e numero d'iscrizione: 00708860366