



MURATORI

**TIPO-TYPE-TYP
MZ11CTI**

CATALOGO RICAMBI
Catalogue Pièces Detachées
Ersatzteilkatalog
Spare Parts Catalogue
Catálogo Recambios

EDIZIONE 11/2022



**NORME PER LE ORDINAZIONI - COMMANDES/NORMES - BESTELLNORMEN - HOW TO ORDER
INDICE DELLE TAVOLE - INDEX DES TABLES - TAFELVERZEICHNIS - TABLES INDEX**

MZ11CTI

Per ordinare parti di ricambio specificare:

- tipo e matricola della macchina (apposti sulla macchina o sui documenti di acquisto);
- numero del riferimento del pezzo nel disegno (Pos.), numero della tavola (Tav.) e numero di codice

N.B.: le indicazioni destro o sinistro vengono date guardando la macchina da dietro.

Pour les commandes de pièces de rechange veuillez spécifier:

- *type et numéro de série de la machine (indiqués sur la machine et sur le bon d'achat);*
- *numéro de référence du pièce sur le plan (Pos.), numéro du plan (Tav.) et numéro de code (codice)*

N.B.: *les indications droite ou gauche sont données en regardant la machine par derrière.*

Zum Bestellen von Ersatzteilen folgendes angeben:

- *Typ und Serien-Nr. der Maschine (zu finden auf der Maschine oder der Einkaufspapieren);*
- *Bezug-Nr. des Ersatzteils auf der Zeichnung (Pos.), Zeichnungsnummer (Tav.) und Kodenummer (codice)*

N.B.: *Die Angaben rechts und links verstehen sich so, dass man hinter der Maschine steht.*

When ordering spare parts specify:

- machine type and serial number (found on the machine or on the purchasing documents);
- reference number of the part on the relative drawing (Pos.) number of the drawing (Tav.) and part number (codice)

N.B.: right-hand or left-hand indications are made by viewing the machine from the rear.

TAV. 1.0

GRUPPO TELAIO
ENSEMBLE CHASSIS
SATZ FÜR RAHMEN
KIT FOR FRAME

TAV. 1.1

TRASMISSIONE A INGRANAGGI
TRANSMISSION LAT. PAR ENGRENAGES
SEITL. ANTRIEB DURCH ZAHNRÄDER
SIDE GEAR TRANSMISSION

TAV. 2.0

GRUPPO RULLO ROTORE A 6 ZAPPE
ENSEMBLE ROTOR A 6 LAMES
SATZ FÜR ROTOR ZU 6 MESSER
KIT FOR ROTOR 6 BLADES

TAV. 3.0

GRUPPO RIDUTTORE A 4 VELOCITA'
ENSEMBLE BOITIER 4 VITESSES
SATZ FÜR 4-GANGGETRIEBE
KIT FOR 4-SPEED GEAR BOX

TAV. 4.0

GRUPPO RULLO POSTERIORE
ENSEMBLE ROULEAU ARRIERE
SATZ FÜR ZWEIGANGGETRIEBE
KIT REAR ROLLER

TAV. 5.0 1/2 (145-155-180)

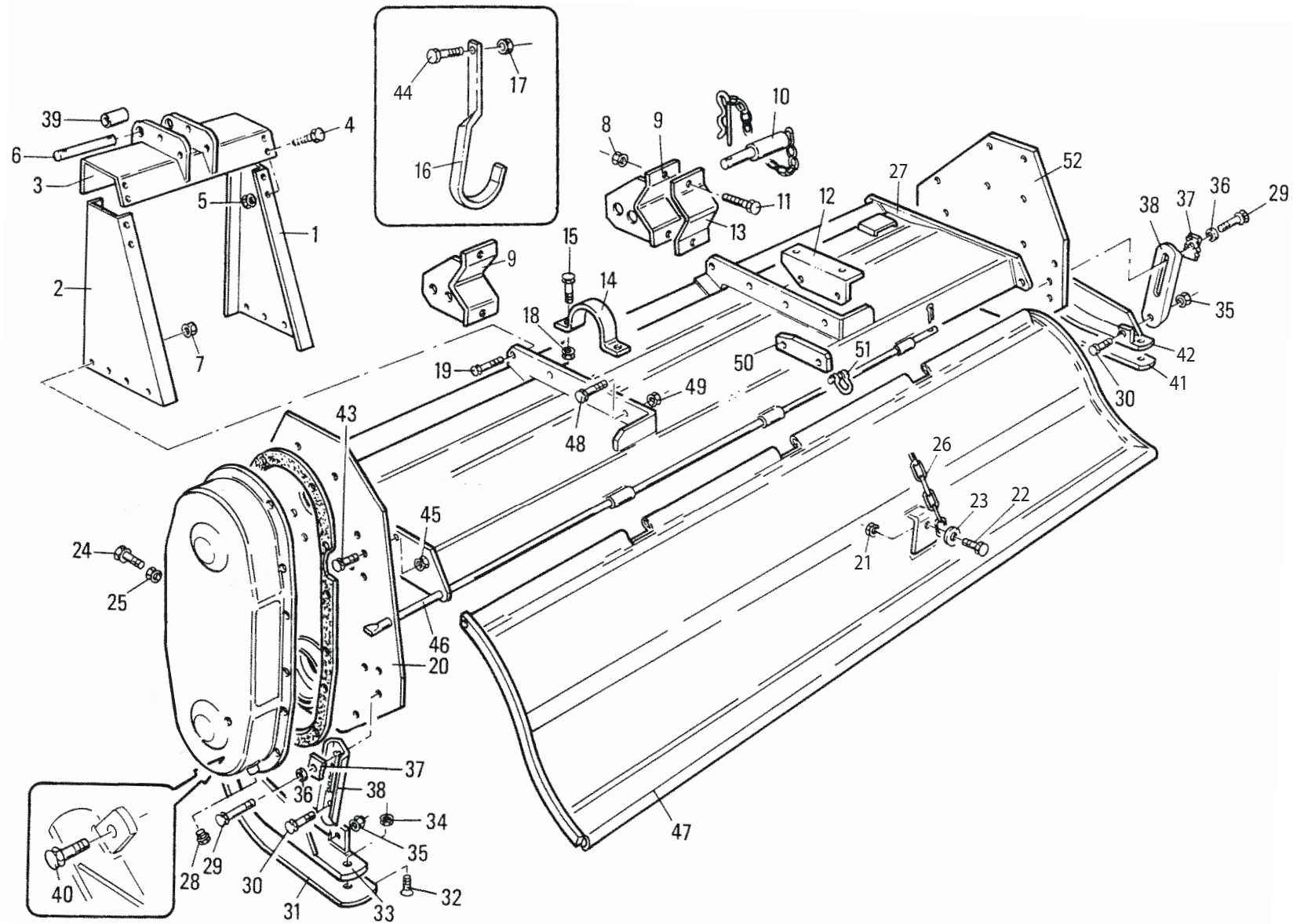
PROTEZIONI ANTINFORTUNISTICHE "CE" - PIEDE D'APPOGGIO
PROTECTIONS "CE" - PIEDISTAL
UNFALLSCHUTZVORRICHTUNGEN "CE" - STUTZHALTER
SAFETY GUARDS "CE" - STANDING JACK

TAV. 5.0 2/2 (205-220-255)

PROTEZIONI ANTINFORTUNISTICHE "CE" - PIEDE D'APPOGGIO
PROTECTIONS "CE" - PIEDISTAL
UNFALLSCHUTZVORRICHTUNGEN "CE" - STUTZHALTER
SAFETY GUARDS "CE" - STANDING JACK

TAV. 6.0 (145-255)

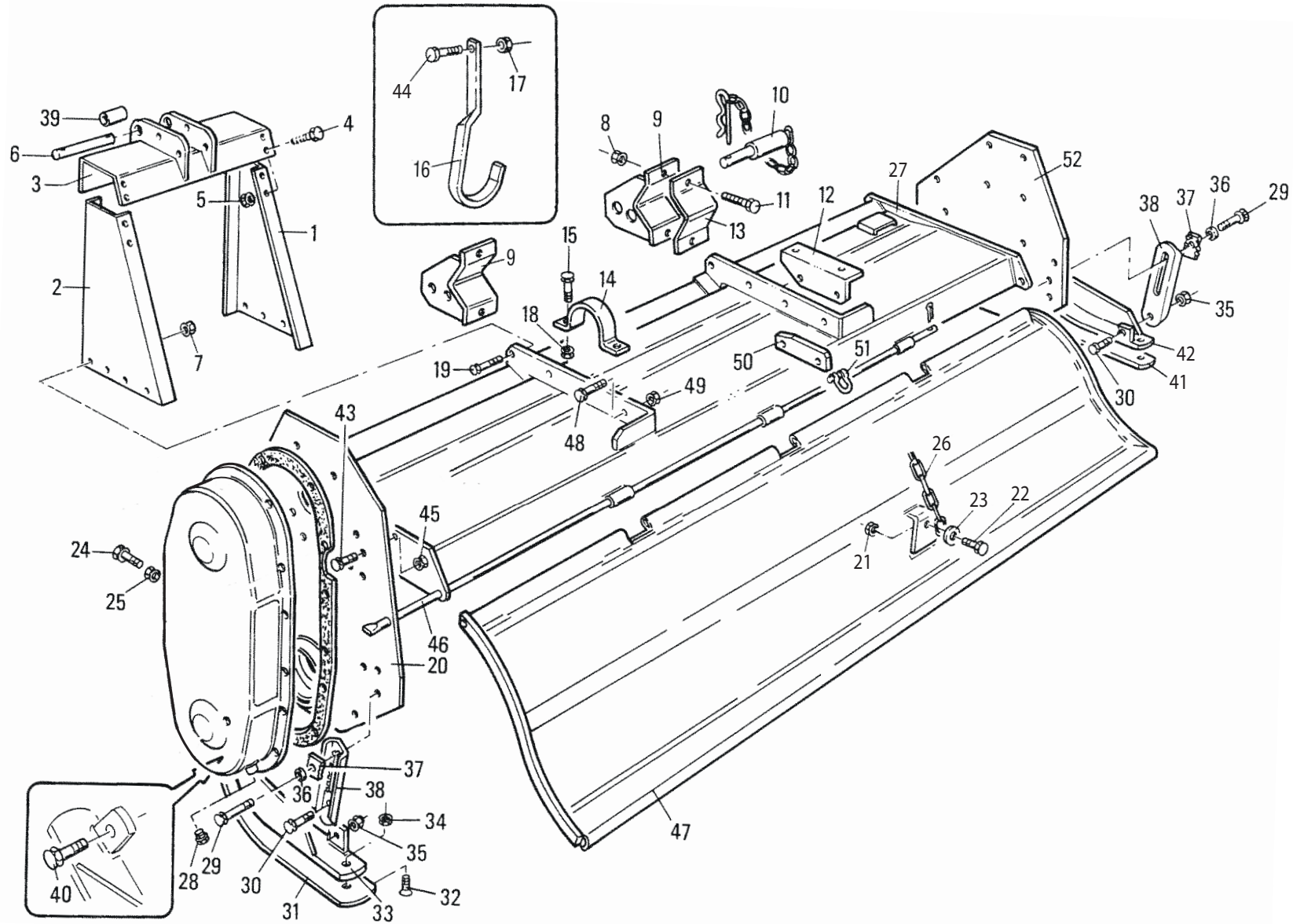
ALBERO CARDANICO COMPLETO
ARBRE A JOINTS DE CARDAN
KARDANWELLE
PTO SHAFT



MURATORI MZ11CTI

TAV. 1.0

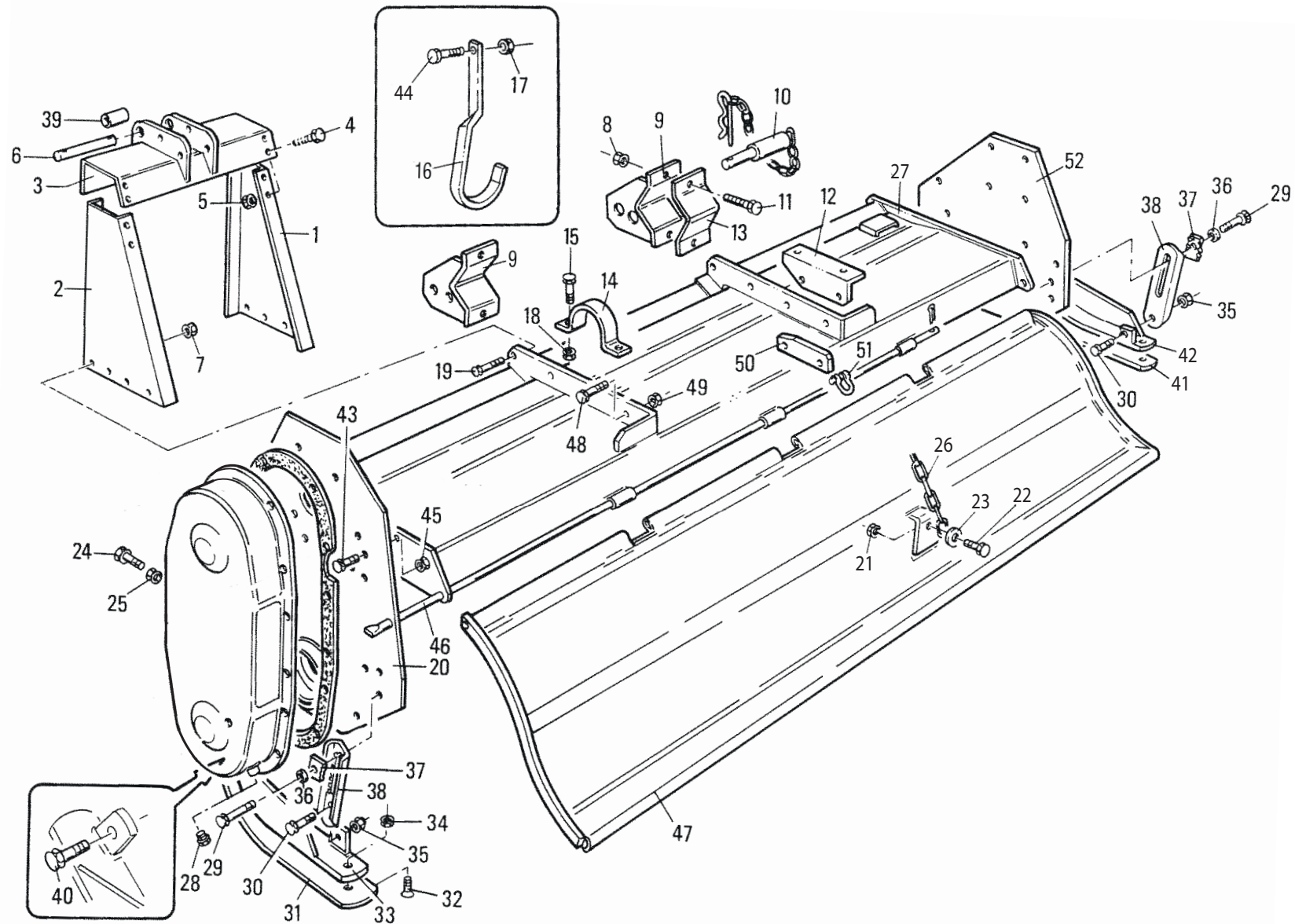
POS.	N° CODICE	Q.	DESCRIZIONE	DESIGNATION	BENENNUNG	DESCRIPTION	DESIGNAZIONE	Da matr. De nr. serie Vom Seriennr. From serial nr.	Fino matr. Jusqu'au nr. serie Bis Seriennr. Up to serial nr.
1	39301500	1	ARCATA DX	ARCADE (D)	ARKADE (RECHTS)	ARCADE (RH)			
2	39301400	1	ARCATA SX	ARCADE (G)	ARKADE (LINKS)	ARCADE (LH)			
3	40295900	1	MENSOLA	CONSOLE	KONSOLE	BRACKET			
4	60023200	8	VITE	VIS	SCHRAUBE	SCREW	TE 14 x 35 UNI 5739		
5	62010800	8	DADO	ECROU	MUTTER	NUT	M 14 x 2 AUTOBLOCC.		
6	68062000	1	PERNO	PIVOT	BOLZEN	PIN			
7	62010800	6	DADO	ECROU	MUTTER	NUT	M 14 x 2 AUTOBLOCC.		
8	62010800	4	DADO	ECROU	MUTTER	NUT	M 14 x 2 AUTOBLOCC.		
8	62011000	4	DADO	ECROU	MUTTER	NUT	M 16 x 2 AUTOBLOCC.		
9	40133800	2	STAFFA	BRIDE	BUEGEL	BRACKET			
10	68062200	2	PERNO	PIVOT	BOLZEN	PIN			
11	60023300	4	VITE	VIS	SCHRAUBE	SCREW	TE 14 x 60 UNI 5737		
11	60027200	4	VITE	VIS	SCHRAUBE	SCREW	TE 16 x 70 UNI 5737		
12	39302400	2	SOSTEGNO	SUPPORT	TRAEGER	SUPPORT			
13	30102300	2	RITEGNO	FIXAGE	BEFESTIGUNG	CLAMP			
14	30192300	2	RITEGNO	FIXAGE	BEFESTIGUNG	CLAMP			
15	60001700	8	VITE	VIS	SCHRAUBE	SCREW	TE 12 x 40 UNI 5739		
16	30120100	1	GANCIO	CROCHET	HAKEN	HOOK			
17	62010400	1	DADO	ECROU	MUTTER	NUT	M 10 x 1,5 AUTOBLOCC.		
18	62010600	8	DADO	ECROU	MUTTER	NUT	M 12 x 1,75 AUTOBLOCC.		
19	60000300	5	VITE	VIS	SCHRAUBE	SCREW	TE 14 x 40 UNI 5739		
20	40307000	1	PIASTRA CARTER	PLAQUE	SEITENWAND	SIDE FRAME			
21	62007100	1	DADO	ECROU	MUTTER	NUT	M 12 x 1,75 UNI 5587		
22	60020400	1	VITE	VIS	SCHRAUBE	SCREW	TE 12 x 25 UNI 5739		
23	61007500	1	RONDELLA	RONDELLE	SCHEIBE	WASHER	PIANA Ø12 x 36		
24	60020000	1	VITE	VIS	SCHRAUBE	SCREW	TE 16 x 80 UNI 5739		

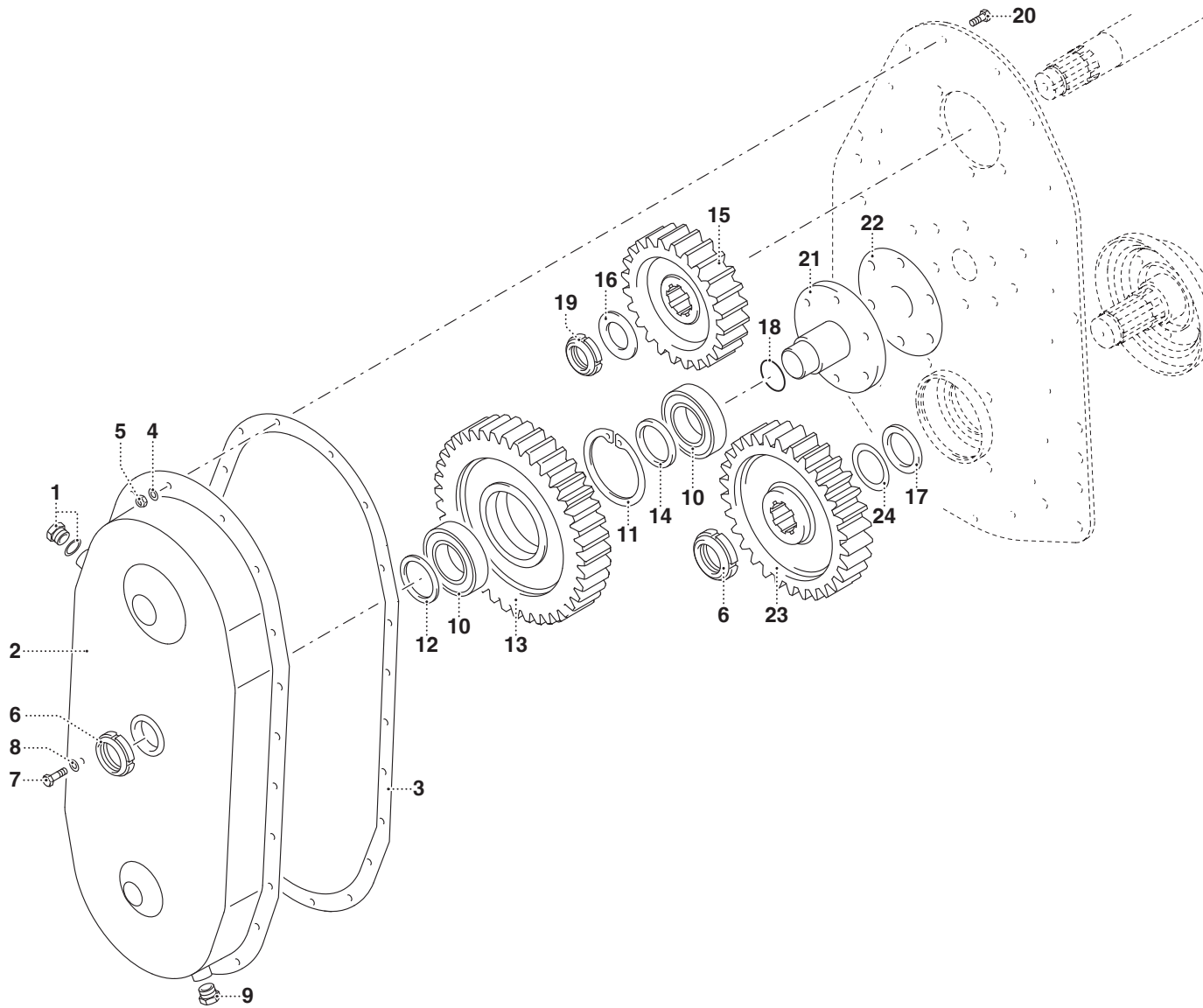


MURATORI MZ11CTI

TAV. 1.0

POS.	N° CODICE	Q.	DESCRIZIONE	DESIGNATION	BENENNUNG	DESCRIPTION	DESIGNAZIONE	Da matr. De nr. serie Vom Seriennr. From serial nr.	Fino matr. Jusqu'au nr. serie Bis Seriennr. Up to serial nr.
25	62000900	1	DADO	ECROU	MUTTER	NUT	M 16 x 2 UNI 5587		
26	68002300	1	CATENA	CHAINE	KETTE	CHAIN			
27	41121200	1	TELAIO	CHASSIS	RAHMEN	FRAME	145		
27	41088900	1	TELAIO	CHASSIS	RAHMEN	FRAME	155		
27	41089000	1	TELAIO	CHASSIS	RAHMEN	FRAME	180		
27	41089100	1	TELAIO	CHASSIS	RAHMEN	FRAME	205		
27	41089200	1	TELAIO	CHASSIS	RAHMEN	FRAME	220		
27	41089300	1	TELAIO	CHASSIS	RAHMEN	FRAME	255		
28	68052600	1	TAPPO	BOUCHON	STOPFEN	PLUG			
29	60000300	2	VITE	VIS	SCHRAUBE	SCREW	TE 14 x 40 UNI 5739		
30	60017500	2	VITE	VIS	SCHRAUBE	SCREW	TE 14 x 1,5 x 35 UNI 5740		
31	30192500	1	PATTINO SX	PATIN GAUCHE	GLEITBLOCK Klappe	PAD LEFT			
32	60003300	4	VITE	VIS	SCHRAUBE	SCREW	TS 12 x 35 UNI 5933		
33	40241100	1	SLITTA SX	PATIN (G)	STUTZKUFEN (LINKS)	SKID (LH)			
34	62000600	4	DADO	ECROU	MUTTER	NUT	M 12 x 1,75 UNI 5587		
35	62010700	2	DADO	ECROU	MUTTER	NUT	M 14 x 1,5 AUTOBLOCC.		
36	61000100	2	RONDELLA	RONDELLE	SCHEIBE	WASHER	DENT. Ø 14 UNI 3704		
37	39143100	2	QUADRETTO	CARRE	PLATT	PLATE			
38	39143000	2	BIELLA	BIELLE	PLEUELSTANGE	LINK			
39	32108500	1	BOCCOLA	DOUILLE	BUECHSE	BUSHING			
40	60001900	2	VITE	VIS	SCHRAUBE	SCREW	TE 14 x 35 UNI 5739		
41	30192600	1	PATTINO DX	PATIN DROIT	GLEITBLOCK RECHTE	PAD RIGHT			
42	40241200	1	SLITTA DX	CHARIOT DX	STUTZKUFEN (RECHTS)	SKID (RH)			
43	60001200	10	VITE	VIS	SCHRAUBE	SCREW	TE 12 x 35 UNI 5739		
44	60021300	1	VITE	VIS	SCHRAUBE	SCREW	TE 10 x 30 UNI 5735		
45	62010600	8	DADO	ECROU	MUTTER	NUT	M 12 x 1,75 AUTOBLOCC.		

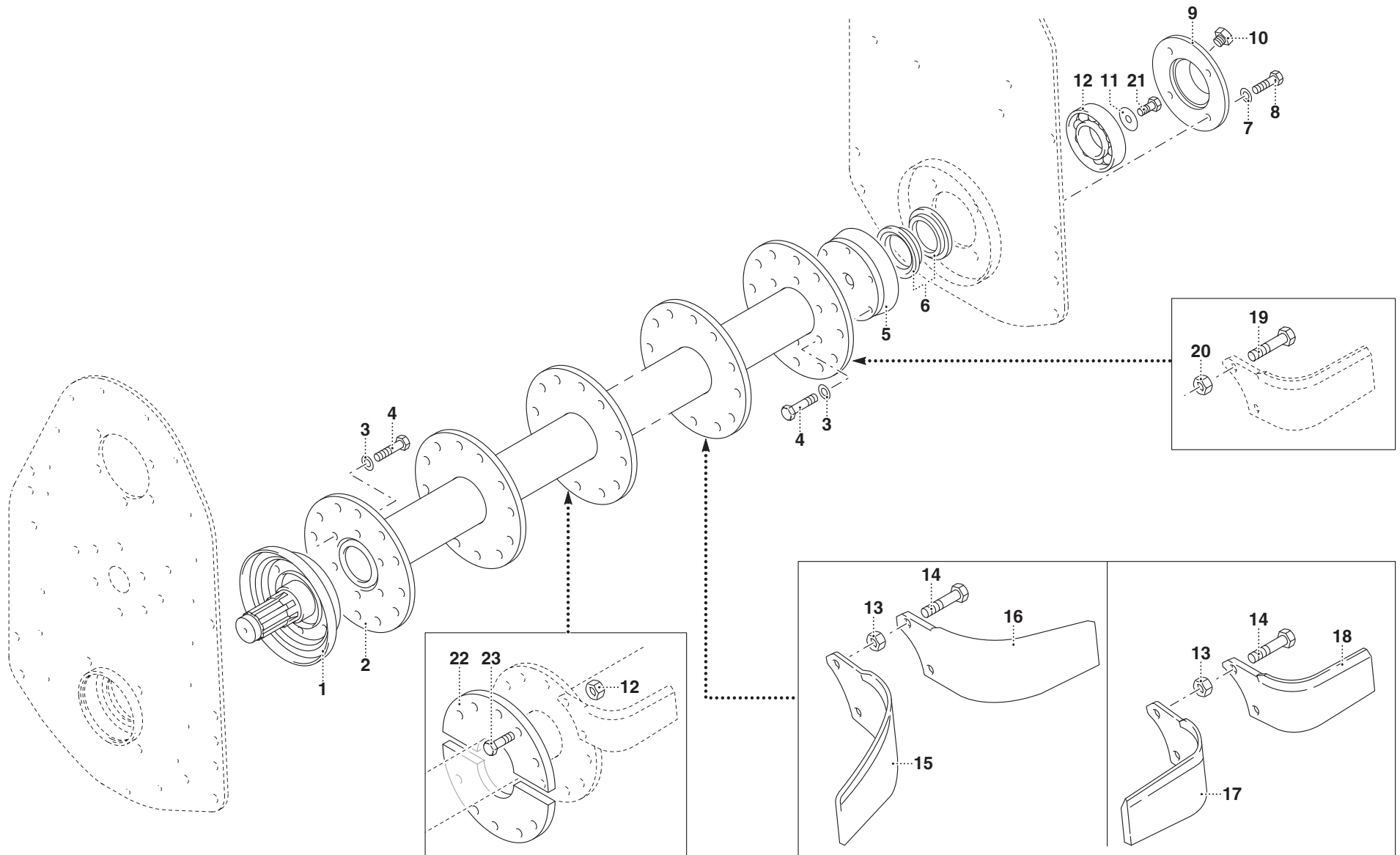




MURATORI MZ11CTI

TAV. 1.1

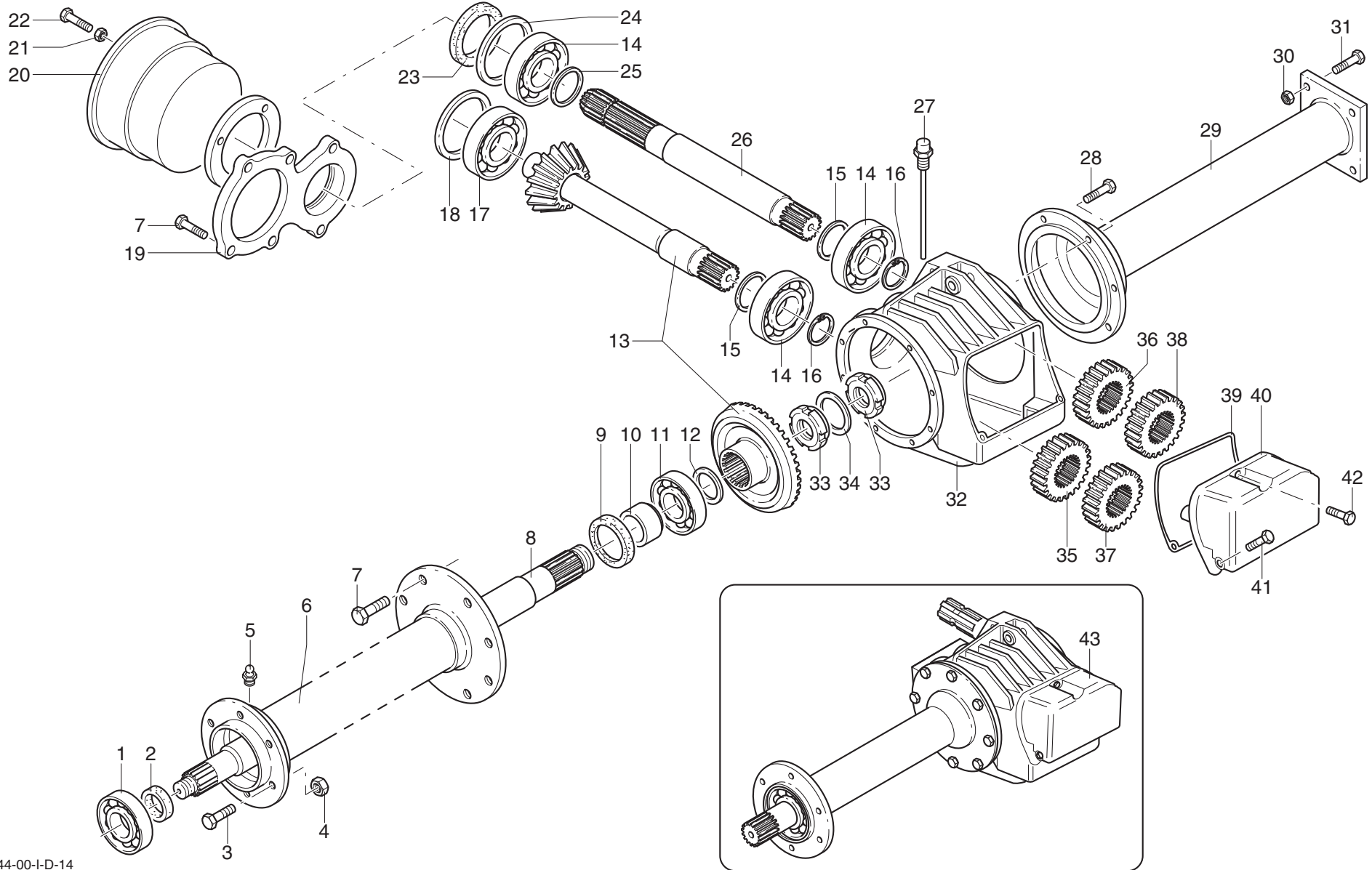
POS.	N° CODICE	Q.	DESCRIZIONE	DESIGNATION	BENENNUNG	DESCRIPTION	DESIGNAZIONE	Da matr. De nr. serie Vom Seriennr. From serial nr.	Fino matr. Jusqu'au nr. serie Bis Seriennr. Up to serial nr.
1	68000500	1	TAPPO	BOUCHON	STOPFEN	PLUG			
2	40210600	1	COPERCHIO	COUVERCLE	DECKEL	COVER			
3	80012900	1	GUARNIZIONE	GARNITURE	DICHTUNG	SEAL			
4	61000600	22	RONDELLA	RONDELLE	SCHEIBE	WASHER	Dent. Int. Ø 8 UNI 3704		
5	62000700	22	DADO	ECROU	MUTTER	NUT	M 8 x 1,25 UNI 5587		
6	62004700	2	GHIERA	FRETTE	NUTMUTTER	RING NUT	M 45 x 1,5 GUK AUTOBLOCC.		
7	60001100	1	VITE	VIS	SCHRAUBE	SCREW	TE 10x10 UNI 5739 4.8		
8	61000800	1	RONDELLA	RONDELLE	SCHEIBE	WASHER	Piana Ø 10 alluminio		
9	68052600	1	TAPPO	BOUCHON	STOPFEN	PLUG			
10	67008900	2	CUSCINETTO	ROULEMENT	LAGER	BEARING	30211		
11	63005500	1	ANELLO ELASTICO	ARRETOIR	SPANNRING	SNAP-RING	Ø 100 I		
12	32158500	2	SPESSORE	EPAISSEUR	DISTANZRING	SPACER			
13	10039200	1	INGRANAGGIO	PIGNON	ZAHNRAD	GEAR	Z=40		
14	32161100	1	DISTANZIALE	ENTRETOISE	DISTANZSTUECK	SPACER			
15	10039400	1	INGRANAGGIO	PIGNON	ZAHNRAD	GEAR	Z=26		
16	32158300	1	DISTANZIALE	ENTRETOISE	DISTANZSTUECK	SPACER			
17	32158400	1	DISTANZIALE	ENTRETOISE	DISTANZSTUECK	SPACER			
18	66016000	1	GUARNIZIONE "OR"	GARNITURE "OR"	"OR" DICHTUNG	"OR" SEAL	OR 2175		
19	62017300	1	DADO	ECROU	MUTTER	NUT	M 36 x 3 INTAGLI		
20	60022800	22	VITE	VIS	SCHRAUBE	SCREW	TE M 8x20 UNI 5739 8.8		
21	10039000	1	SUPPORTO	SUPPORT	TRÄGER	SUPPORT			
22	80015200	1	GUARNIZIONE	GARNITURE	DICHTUNG	SEAL			
23	10039300	1	INGRANAGGIO	PIGNON	ZAHNRAD	GEAR	Z=33		
24	68009700	1	SPESSORE	EPAISSEUR	DISTANZRING	SPACER			



MURATORI MZ11CTI

TAV. 2.0

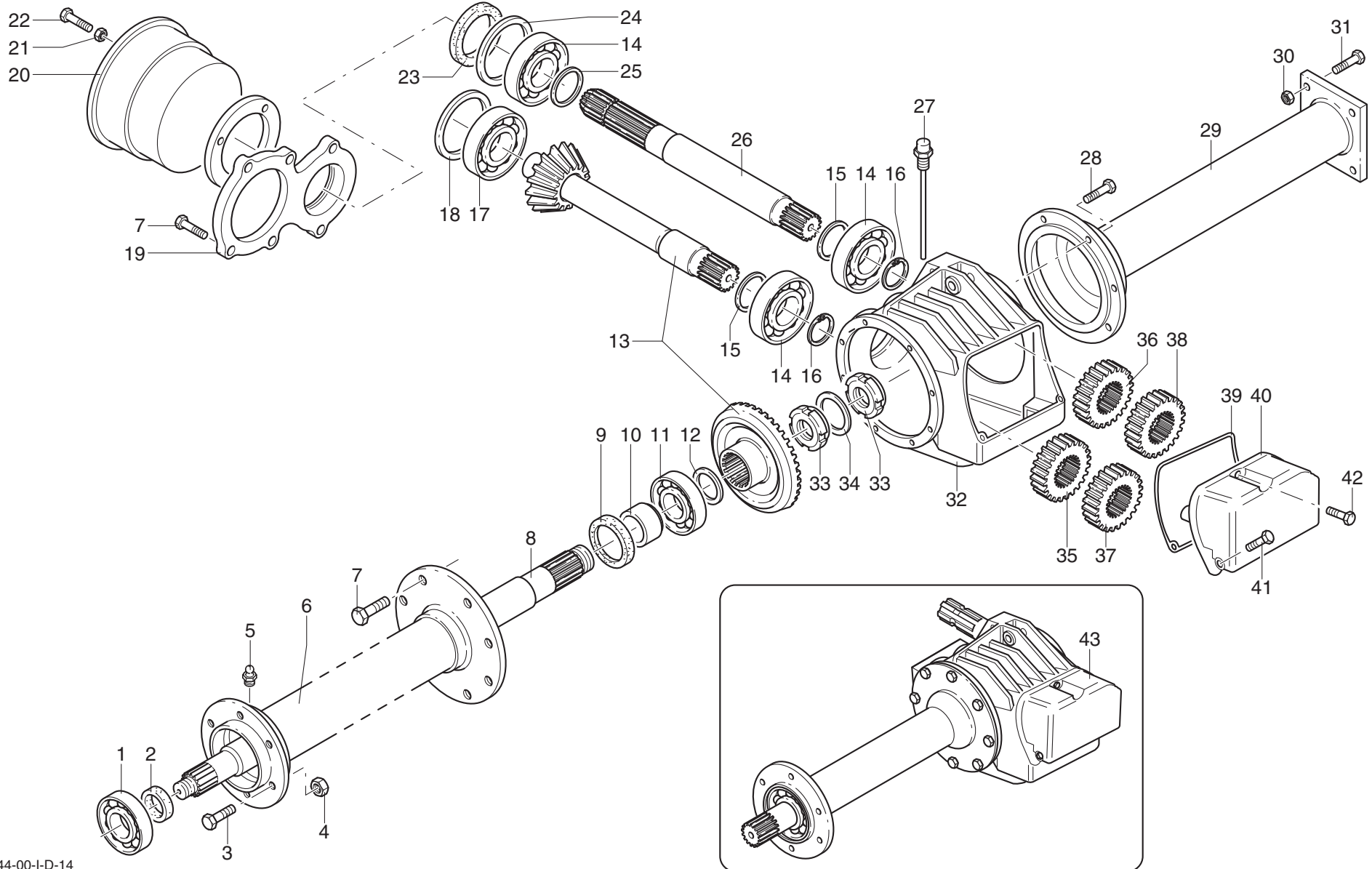
POS.	N° CODICE	Q.	DESCRIZIONE	DESIGNATION	BENENNUNG	DESCRIPTION	DESIGNAZIONE	Da matr. De nr. serie Vom Seriennr. From serial nr.	Fino matr. Jusqu'au nr. serie Bis Seriennr. Up to serial nr.
1	45101700	1	MOZZO SX	MOYEU (G)	NABE (LINKS)	HUB (LH)			
2	42032901	1	ROTORE	ROTOR	ROTOR	ROTOR	155		
2	42033001	1	ROTORE	ROTOR	ROTOR	ROTOR	180		
2	42033101	1	ROTORE	ROTOR	ROTOR	ROTOR	205		
2	42033201	1	ROTORE	ROTOR	ROTOR	ROTOR	220		
3	61000100	12	RONDELLA	RONDELLE	SCHEIBE	WASHER	DENT. Ø14 UNI 3704		
4	60025300	12	VITE	VIS	SCHRAUBE	SCREW	TE 14 x 1,5 x 30 UNI 5740		
5	40105900	1	MOZZO DX	MOYEU (D)	NABE (RECHTS)	HUB (RH)			
6	68044600	1	GUARNIZIONE DX	GARNITURE (D)	DICHTUNG (RECHTS)	SEAL (RH)			
7	61000100	4	RONDELLA	RONDELLE	SCHEIBE	WASHER	DENT. Ø14 UNI 3704		
8	60025300	4	VITE	VIS	SCHRAUBE	SCREW	TE 14 x 1,5 x 30 UNI 5740		
9	10028800	1	COPERCHIO	COUVERCLE	DECKEL	COVER			
10	68053400	1	TAPPO	BOUCHON	STOPFEN	PLUG	TCCE 10 x 1 DIN 908		
11	39113900	1	RONDELLA	RONDELLE	SCHEIBE	WASHER	Øe60 Øi15 SP6		
12	67001900	1	CUSCINETTO	ROULEMENT	LAGER	BEARING	6308		
13	62010700		DADO	ECROU	MUTTER	NUT	M 14 x 1,5 AUTOBLOCC.		
14	60017800		VITE	VIS	SCHRAUBE	SCREW	TE 14 x 1,5 x 35 10.9		
15	12012602		ZAPPA CURVA SX	LAME COURBE (G)	GEBOGENES MESSER (L)	CURVED BLADE (LH)			
16	12012502		ZAPPA CURVA DX	LAME COURBE (D)	GEBOGENES MESSER (R)	CURVED BLADE (RH)			
17	12012802		ZAPPA SQUADRO SX	LAME EQUERRE (G)	WINKELMESSER (L)	SQUARE BLADE (LH)			
18	12012702		ZAPPA SQUADRO DX	LAME EQUERRE (D)	WINKELMESSER (R)	SQUARE BLADE (RH)			
19	60017800	6	VITE	VIS	SCHRAUBE	SCREW	TE 14 x 1,5 x 35 10.9		
20	62010700	6	DADO	ECROU	MUTTER	NUT	M 14 x 1,5 AUTOBLOCC.		
21	60025300	1	VITE	VIS	SCHRAUBE	SCREW	TE 14 x 1,5 x 30 UNI 5740		
22	39171300		CONTROFLANGIA	CONTRE-BRIDE	GEGENFLANSCH	COUNTERFLANGE			
23	60013500		VITE	VIS	SCHRAUBE	SCREW	TE 14 x 1,5 x 45 10.9		



MURATORI MZ11CTI

TAV. 3.0

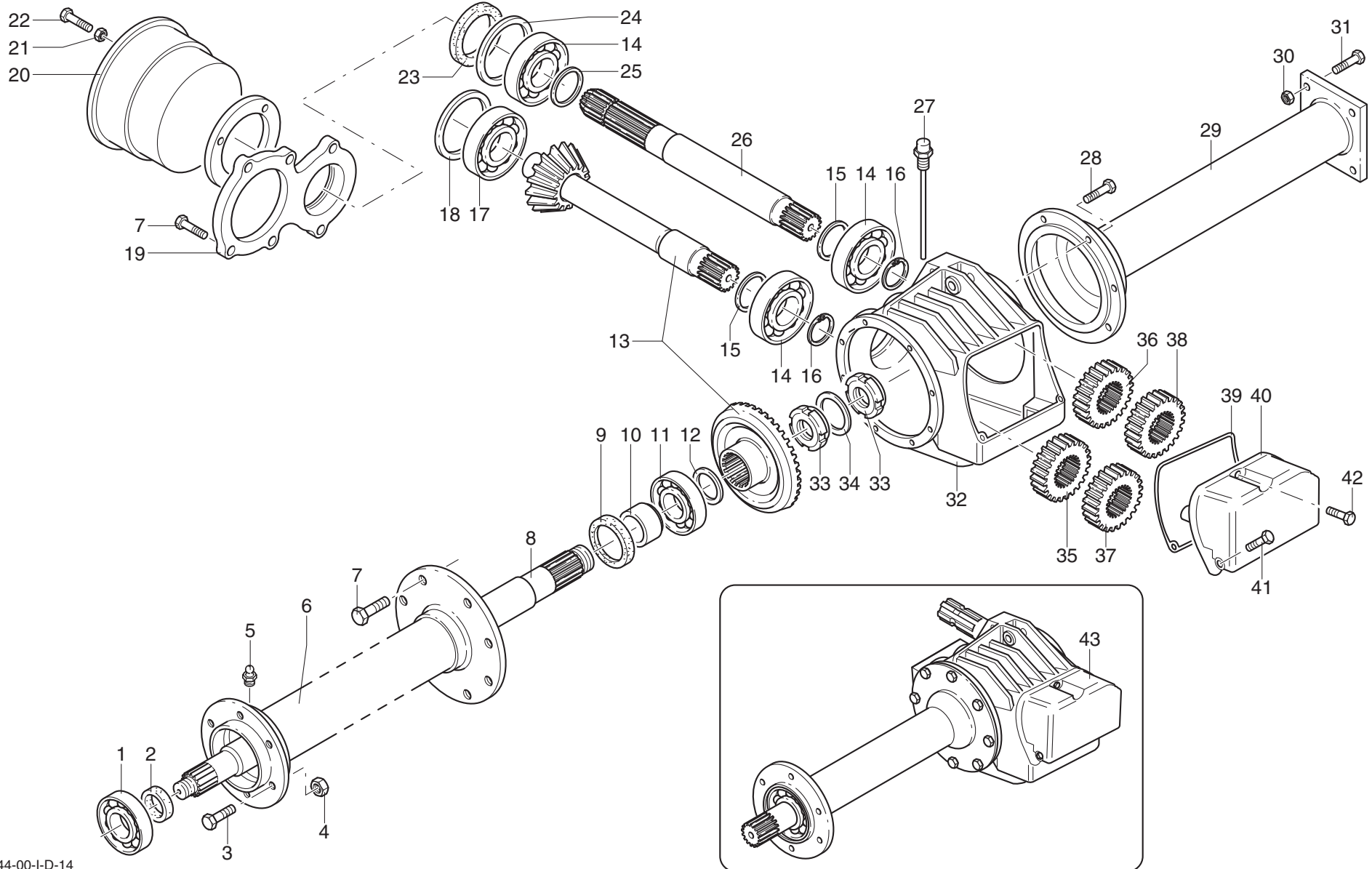
POS.	N° CODICE	Q.	DESCRIZIONE	DESIGNATION	BENENNUNG	DESCRIPTION	DESIGNAZIONE	Da matr. De nr. serie Vom Seriennr. From serial nr.	Fino matr. Jusqu'au nr. serie Bis Seriennr. Up to serial nr.
1	67002300	1	CUSCINETTO	ROULEMENT	LAGER	BEARING	6311		
2	66005700	1	ANELLO TENUTA	JOINT D'ETANCHEITE	DICHTUNGSRING	JUNT RING	55 x 85 x 8		
3	60001200	8	VITE	VIS	SCHRAUBE	SCREW	TE 12 x 35 UNI 5739		
4	62010600	8	DADO	ECROU	MUTTER	NUT	M 12 x 1,75 AUTOBLOCC.		
5	64001800	1	INGRASSATORE	GRAISSEUR	SCHMIERNIPPEL	GREASE FITTING	M 10 x 1 DIRITTO		
6	40298700	1	CANOTTO	TUBE	ROHR	TUBE	145		
6	40298800	1	CANOTTO	TUBE	ROHR	TUBE	155		
6	40298900	1	CANOTTO	TUBE	ROHR	TUBE	180		
6	40299000	1	CANOTTO	TUBE	ROHR	TUBE	205		
6	40299100	1	CANOTTO	TUBE	ROHR	TUBE	220		
6	40299200	1	CANOTTO	TUBE	ROHR	TUBE	255		
7	60023000		VITE	VIS	SCHRAUBE	SCREW	TE 12 x 30 UNI 5739		
8	31095300	1	SEMIASSE	DEMI-ESSIEU	ACHSWELLE	AXLE SHAFT	145		
8	31095400	1	SEMIASSE	DEMI-ESSIEU	ACHSWELLE	AXLE SHAFT	155		
8	31095500	1	SEMIASSE	DEMI-ESSIEU	ACHSWELLE	AXLE SHAFT	180		
8	31095600	1	SEMIASSE	DEMI-ESSIEU	ACHSWELLE	AXLE SHAFT	205		
8	31095700	1	SEMIASSE	DEMI-ESSIEU	ACHSWELLE	AXLE SHAFT	220		
8	31095800	1	SEMIASSE	DEMI-ESSIEU	ACHSWELLE	AXLE SHAFT	255		
9	66008200	1	ANELLO TENUTA	JOINT D'ETANCHEITE	DICHTUNGSRING	JUNT RING	65 x 85 x 10		
10	32193600	1	BOCCOLA	DOUILLE	BUECHSE	BUSHING			
11	67001600	1	CUSCINETTO	ROULEMENT	LAGER	BEARING	30214		
12	68013500		SPESSORE	EPAISSEUR	DICKE	THICKNESS	90 x 70		
13	10049300	1	COPPIA CONICA	COUPLE CONIQUE	KEGELRADTRIEB.	BEVEL GEAR PAIR			
14	67001100	3	CUSCINETTO	ROULEMENT	LAGER	BEARING	30308		
15	68017000		SPESSORE	EPAISSEUR	DICKE	THICKNESS	50 x 40		
16	63000700	1	ANELLO ELASTICO	ARRETOIR	SPANNRING	SNAP-RING	Ø40 E UNI 7435		

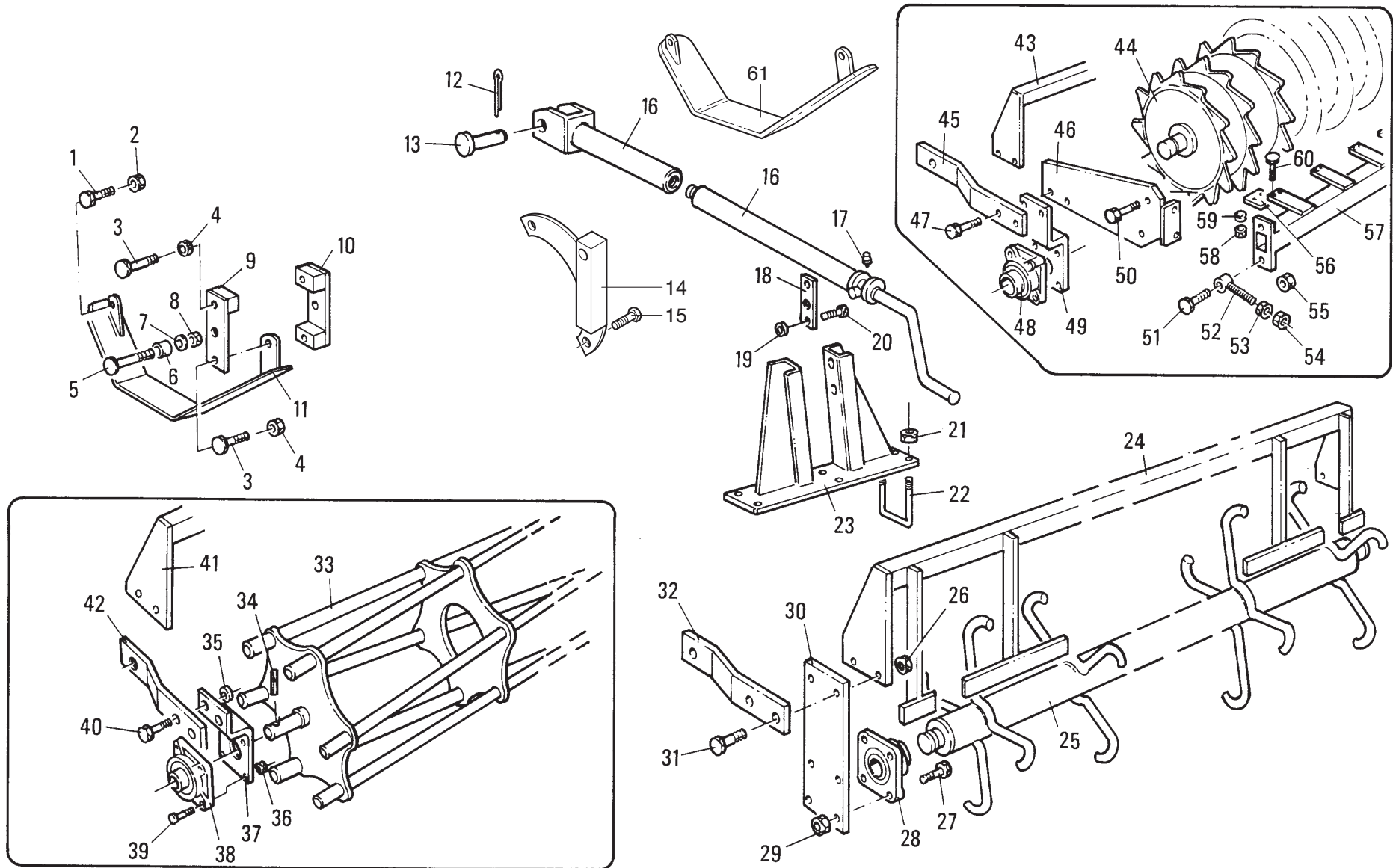


MURATORI MZ11CTI

TAV. 3.0

POS.	N° CODICE	Q.	DESCRIZIONE	DESIGNATION	BENENNUNG	DESCRIPTION	DESIGNAZIONE	Da matr. De nr. serie Vom Seriennr. From serial nr.	Fino matr. Jusqu'au nr. serie Bis Seriennr. Up to serial nr.
17	67008900	1	CUSCINETTO	ROULEMENT	LAGER	BEARING	30211		
18	68071000	1	SPESSORE	EPAISSEUR	DICKE	THICKNESS	85 x 100		
19	03003500	1	COPERCHIO	COUVERCLE	DECKEL	COVER			
20	68077000	1	PROTEZIONE	PROTECTION	SCHUTZ	GUARD			
21	61006200	4	RONDELLA	RONDELLE	SCHEIBE	WASHER	Øi 9 Øe 24		
22	60022800	4	VITE	VIS	SCHRAUBE	SCREW	TE 8 x 20 UNI 5739		
23	66005400	1	ANELLO TENUTA	JOINT D'ETANCHEITE	DICHTUNGSRING	JUNT RING	40 x 56 x 8		
24	68112800	1	SPESSORE	EPAISSEUR	DICKE	THICKNESS	90 x 80		
25	32193700	1	DISTANZIALE	ENTRETOISE	DISTANZSTUECK	SPACER			
26	31095900	1	ALBERO	ARBRE	WELLE	SHAFT			
27	68112900	1	TAPPO	BOUCHON	STOPFEN	PLUG			
28	60000500	8	VITE	VIS	SCHRAUBE	SCREW	TE 12 x 30 UNI 5739		
29	40296000	1	DOPPIO CANOTTO	DOUBLE TUBE	DOPPELTES ROHR	DOUBLE TUBE	145-155		
29	40296100	1	DOPPIO CANOTTO	DOUBLE TUBE	DOPPELTES ROHR	DOUBLE TUBE	180		
29	40296200	1	DOPPIO CANOTTO	DOUBLE TUBE	DOPPELTES ROHR	DOUBLE TUBE	205		
29	40296300	1	DOPPIO CANOTTO	DOUBLE TUBE	DOPPELTES ROHR	DOUBLE TUBE	220		
29	40296500	1	DOPPIO CANOTTO	DOUBLE TUBE	DOPPELTES ROHR	DOUBLE TUBE	255		
30	60013700	4	VITE	VIS	SCHRAUBE	SCREW	TE 16 x 35 UNI 5739		
31	62011000	4	DADO	ECROU	MUTTER	NUT	M 16x2 AUTOBLOCC.		
32	01019800	1	SCATOLA	CARTER	GEHAEUSE	GEARBOX			
33	62016400	2	GHIERA	FRETTE	NUTMUTTER	RING NUT			
34	61010900	1	RONDELLA	RONDELLE	SCHEIBE	WASHER			
35	31096000	1	INGRANAGGIO	PIGNON	ZAHNRAD	GEAR	Z 21		
36	31096100	1	INGRANAGGIO	PIGNON	ZAHNRAD	GEAR	Z 19		
37	31096200	1	INGRANAGGIO	PIGNON	ZAHNRAD	GEAR	Z 23		
38	31096300	1	INGRANAGGIO	PIGNON	ZAHNRAD	GEAR	Z 18		

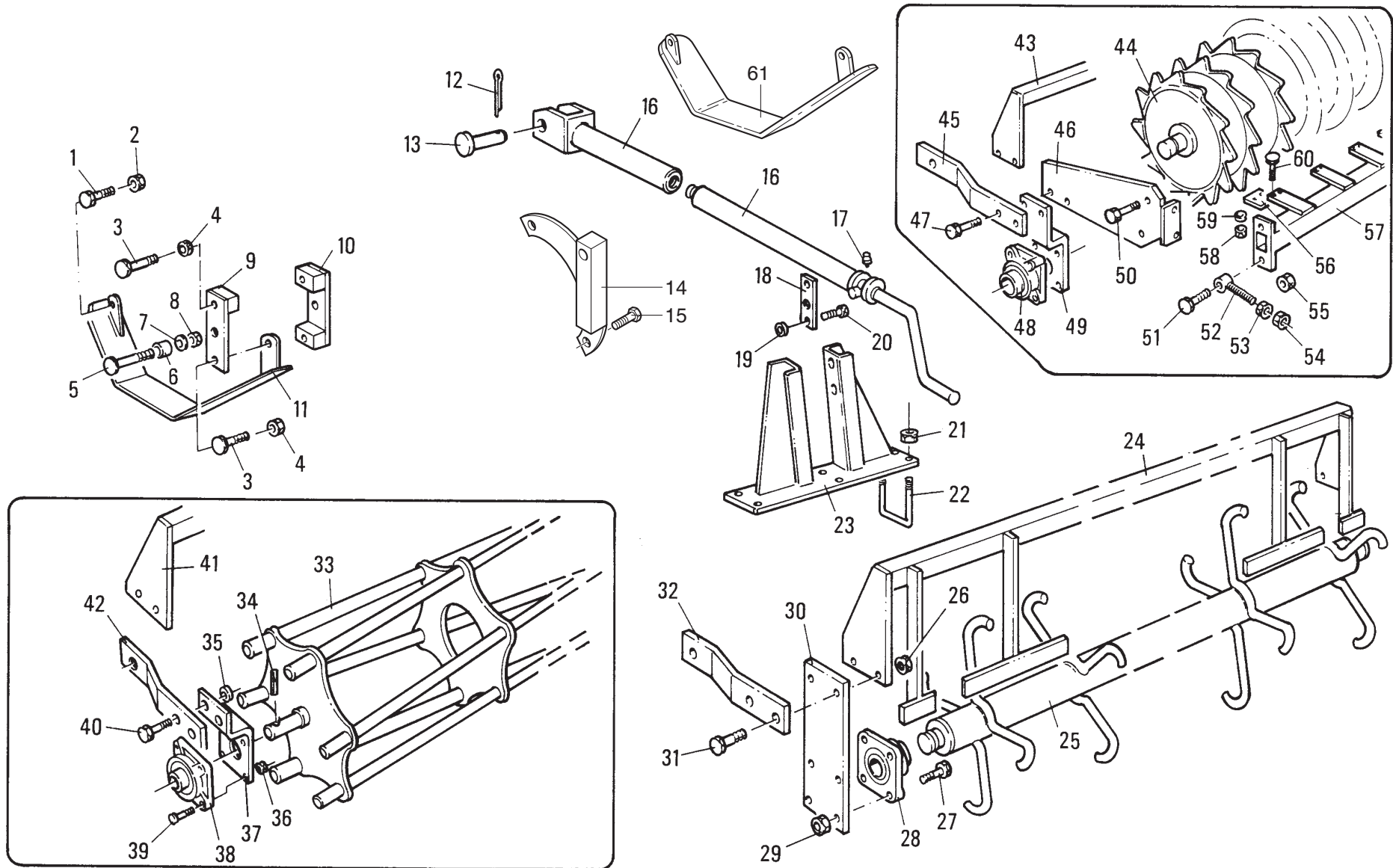




MURATORI MZ11CTI

TAV. 4.0

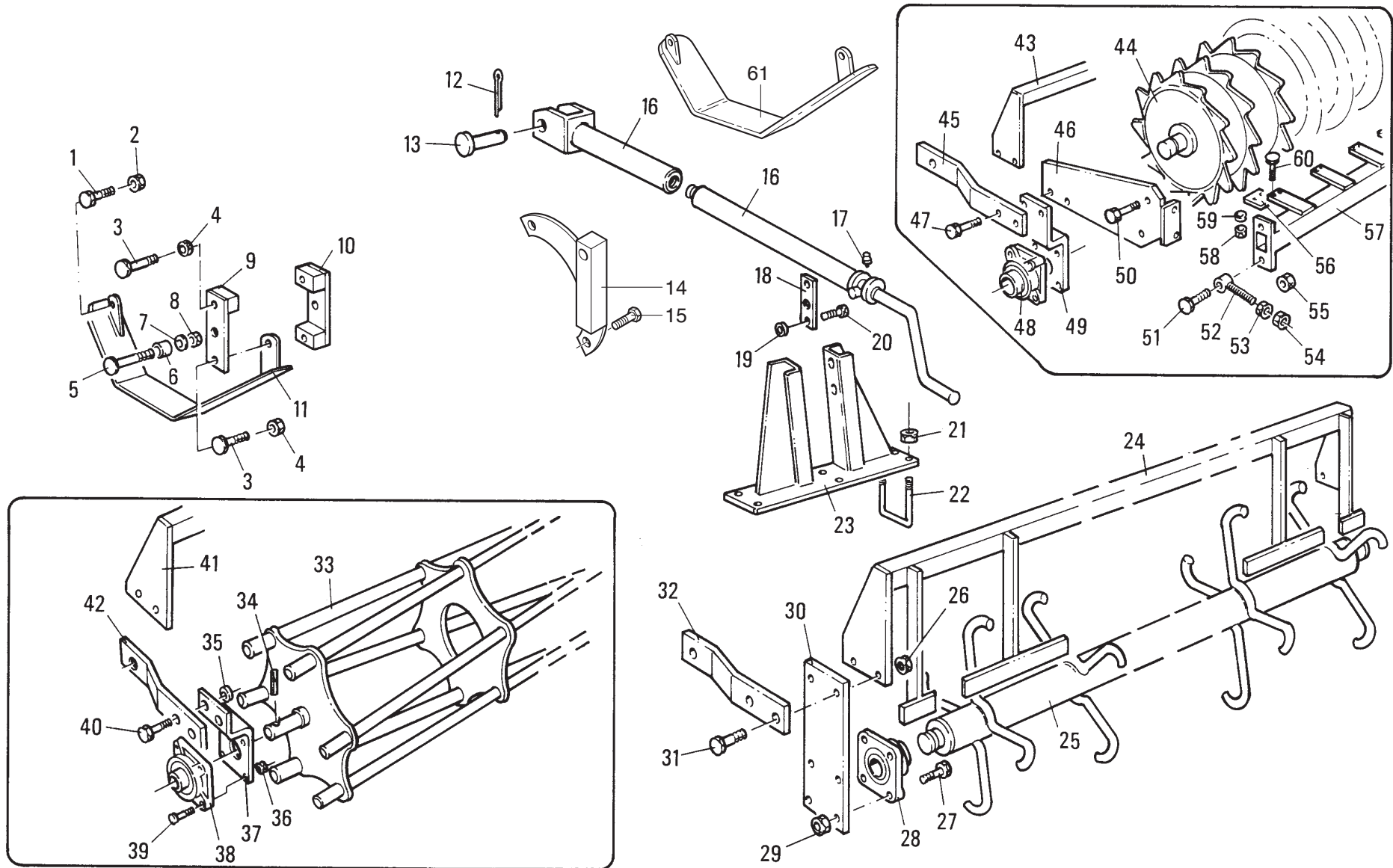
POS.	N° CODICE	Q.	DESCRIZIONE	DESIGNATION	BENENNUNG	DESCRIPTION	DESIGNAZIONE	Da matr. De nr. serie Vom Seriennr. From serial nr.	Fino matr. Jusqu'au nr. serie Bis Seriennr. Up to serial nr.
1	60001900	1	VITE	VIS	SCHRAUBE	SCREW	TE 14x35 UNI 5739		
2	62010800	1	DADO	ECROU	MUTTER	NUT	M 14x2 AUTOBLOCC.		
3	60035700	4	VITE	VIS	SCHRAUBE	SCREW	TE 14x75 UNI 5737		
4	62010800	4	DADO	ECROU	MUTTER	NUT	M 14x2 AUTOBLOCC.		
5	60027200	2	VITE	VIS	SCHRAUBE	SCREW	TE 16x70 UNI 5737		
6	32024600	2	BOCCOLA	DOUILLE	BUECHSE	BUSHING			
7	61006500	2	RONDELLA	RONDELLE	SCHEIBE	WASHER	PIANA Ø 16 UNI 6592		
8	62011000	2	DADO	ECROU	MUTTER	NUT	M 16x2 AUTOBLOCC.		
9	40070601	1	MENSOLA SX	CONSOLE (G)	KONSOLE (LINKS)	BRACKET (LH)			
10	40028301	1	MENSOLA DX	CONSOLE (D)	KONSOLE (RECHTS)	BRACKET (RH)			
11	40241300	1	PARAURTI SX	PARE-CHOCS (G)	STOSS-STANGE (LINKS)	BUMPER (LH)			
12	64001100	1	COPIGLIA	COUPILLE	SPLINT	COTTER PIN			
13	38005200	1	PERNO	PIVOT	BOLZEN	PIN			
14	40297100	1	TORRETTA	TOURELLE	OBERWAGEN	TURRET			
15	60001200	3	VITE	VIS	SCHRAUBE	SCREW	TE 12x35 UNI 5739		
16	45123000	1	VITE	VIS	SCHRAUBE	SCREW			
17	64000200	1	INGRASSATORE	GRAISSEUR	SCHMIERNIPPEL	GREASE FITTING	M 6x1		
18	30192900	2	RITEGNO	FIXAGE	BEFESTIGUNG	CLAMP			
19	62010400	4	DADO	ECROU	MUTTER	NUT	M 10x1,5 AUTOBLOCC.		
20	60023500	4	VITE	VIS	SCHRAUBE	SCREW	TE 10x35 UNI 5739		
21	62010400	6	DADO	ECROU	MUTTER	NUT	M 10x1,5 AUTOBLOCC.		
22	38017300	3	CAVALLOTTO	ARRETOIR	KLEMMSTUECK	UBOLT			
23	40243300	1	TORRETTA	TOURELLE	OBERWAGEN	TURRET			
24	40173200	1	TELAIO POSTERIORE	CHASSIS ARRIERE	HINTERER RAHMEN	REAR MAIN FRAME	180		
24	40173300	1	TELAIO POSTERIORE	CHASSIS ARRIERE	HINTERER RAHMEN	REAR MAIN FRAME	205		
24	40173400	1	TELAIO POSTERIORE	CHASSIS ARRIERE	HINTERER RAHMEN	REAR MAIN FRAME	220		



MURATORI MZ11CTI

TAV. 4.0

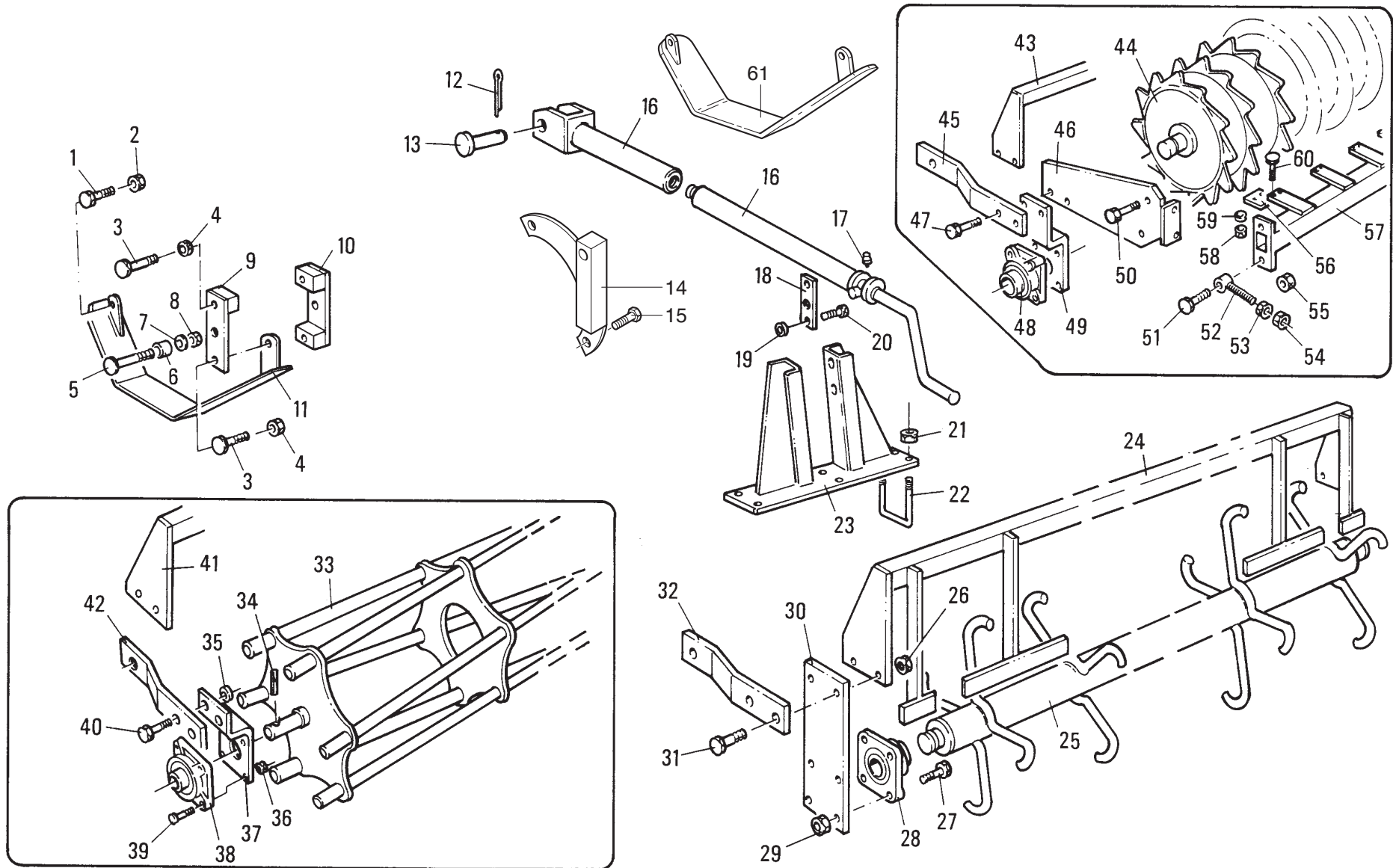
POS.	N° CODICE	Q.	DESCRIZIONE	DESIGNATION	BENENNUNG	DESCRIPTION	DESIGNAZIONE	Da matr. De nr. serie Vom Seriennr. From serial nr.	Fino matr. Jusqu'au nr. serie Bis Seriennr. Up to serial nr.
24	40173500	1	TELAIO POSTERIORE	CHASSIS ARRIERE	HINTERER RAHMEN	REAR MAIN FRAME	255		
25	42057100	1	RULLO PUNTONI	ROULEAU A POINTES	SPITZENWALZE	SPIKED ROLLER	180		
25	42057200	1	RULLO PUNTONI	ROULEAU A POINTES	SPITZENWALZE	SPIKED ROLLER	205		
25	42057300	1	RULLO PUNTONI	ROULEAU A POINTES	SPITZENWALZE	SPIKED ROLLER	220		
25	42057400	1	RULLO PUNTONI	ROULEAU A POINTES	SPITZENWALZE	SPIKED ROLLER	255		
26	62010800	4	DADO	ECROU	MUTTER	NUT	M 14x2 AUTOBLOCC.		
27	60031400	8	VITE	VIS	SCHRAUBE	SCREW	TE 14x45 UNI 5739		
28	67009800	2	SUPPORTO	SUPPORT	TRAEGER	SUPPORT	UCF 207		
29	62010800	8	DADO	ECROU	MUTTER	NUT	M 14x2 AUTOBLOCC.		
30	30136600	2	STAFFA	BRIDE	BUEGEL	BRACKET			
31	60023300	4	VITE	VIS	SCHRAUBE	SCREW	TE 14x60 UNI 5737		
32	30137401	2	BRACCIO	BRAS	ARM	ARM	180-205-220-255		
33	42057800	1	RULLO GABBIA	ROULEAU CAGE	STABWALZE	CAGE ROLLER	180		
33	42057900	1	RULLO GABBIA	ROULEAU CAGE	STABWALZE	CAGE ROLLER	205		
33	42058000	1	RULLO GABBIA	ROULEAU CAGE	STABWALZE	CAGE ROLLER	220		
33	42058100	1	RULLO GABBIA	ROULEAU CAGE	STABWALZE	CAGE ROLLER	255		
34	64001400	2	SPINA ELASTICA	GOUPILLE ELASTIQUE	SPANNSTIFT	ELASTIC PIN	8x50 UNI 6873		
35	62010800	4	DADO	ECROU	MUTTER	NUT	M 14x2 AUTOBLOCC.		
36	62010800	8	DADO	ECROU	MUTTER	NUT	M 14x2 AUTOBLOCC.		
37	30123600	2	STAFFA	BRIDE	BUEGEL	BRACKET			
38	67009800	2	SUPPORTO	SUPPORT	TRAEGER	SUPPORT	UCF 207		
39	60031400	8	VITE	VIS	SCHRAUBE	SCREW	TE 14x45 UNI 5739		
40	60031500	4	VITE	VIS	SCHRAUBE	SCREW	TE 14x70 UNI 5737		
41	41101000	1	TELAIO	CHASSIS	RAHMEN	FRAME	180		
41	41099800	1	TELAIO	CHASSIS	RAHMEN	FRAME	205		
41	41099900	1	TELAIO	CHASSIS	RAHMEN	FRAME	220		



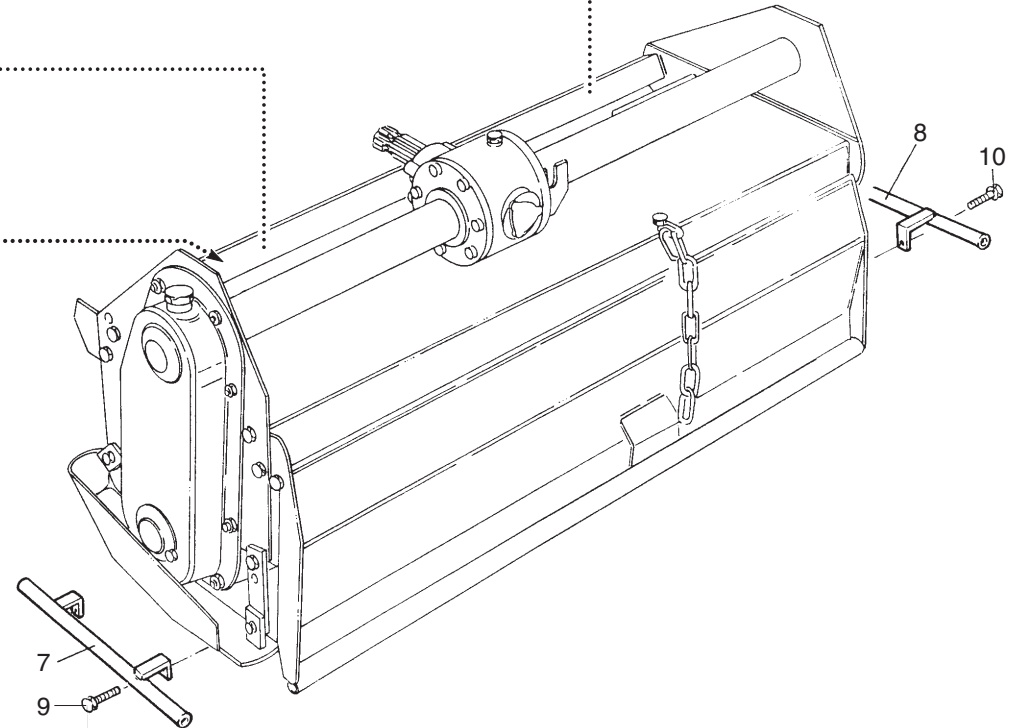
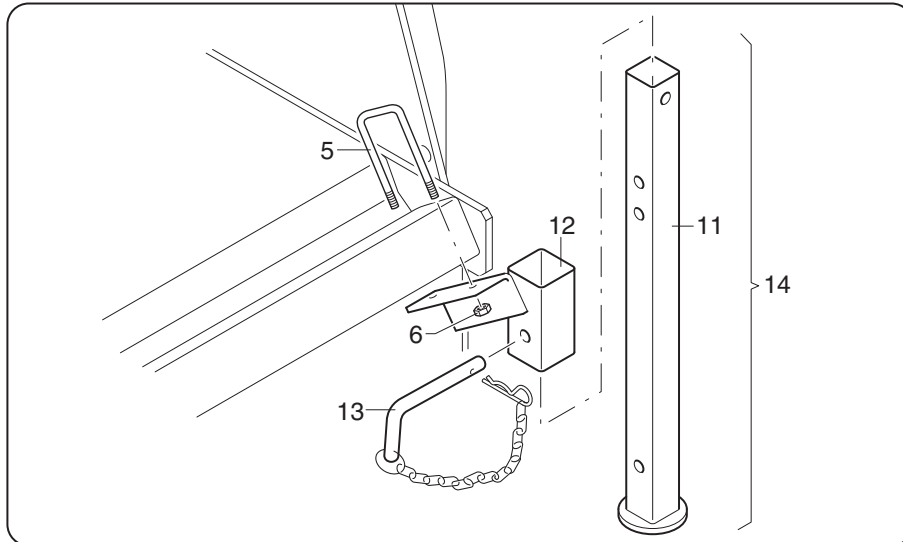
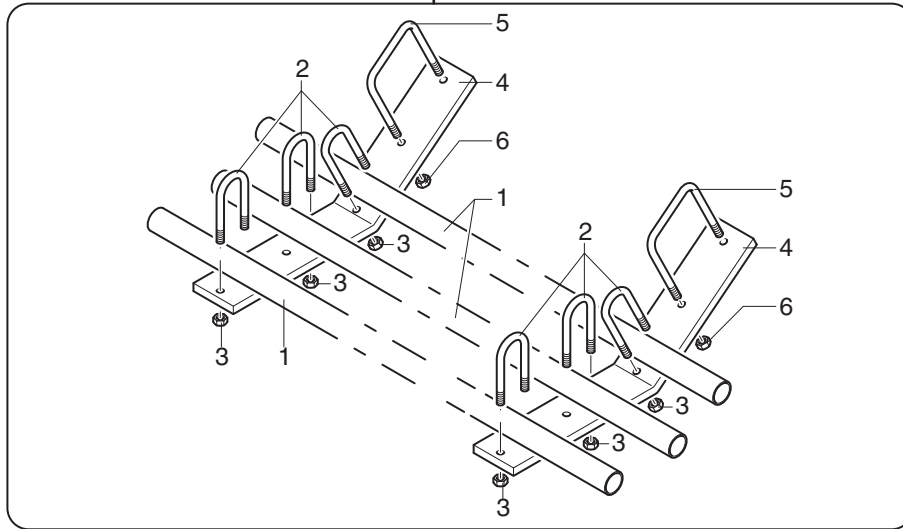
MURATORI MZ11CTI

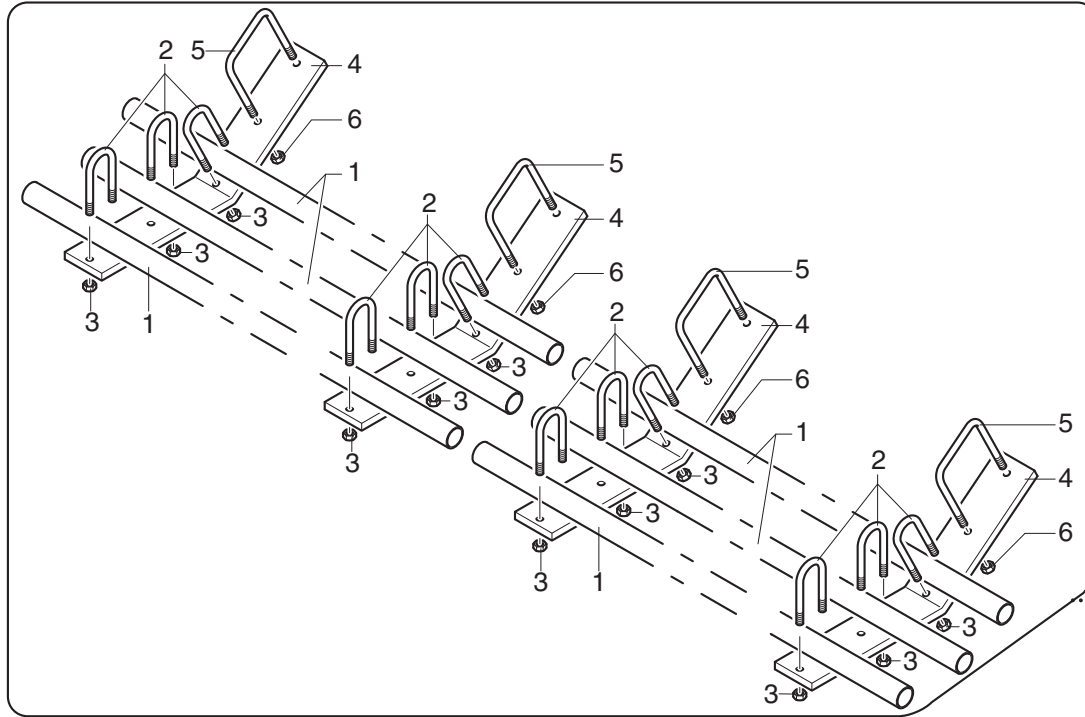
TAV. 4.0

POS.	N° CODICE	Q.	DESCRIZIONE	DESIGNATION	BENENNUNG	DESCRIPTION	DESIGNAZIONE	Da matr. De nr. serie Vom Seriennr. From serial nr.	Fino matr. Jusqu'au nr. serie Bis Seriennr. Up to serial nr.
41	41100000	1	TELAIO	CHASSIS	RAHMEN	FRAME	255		
42	30137201	2	BRACCIO	BRAS	ARM	ARM	180-205-255		
42	30137402	2	BRACCIO	BRAS	ARM	ARM	220		
43	41099800	1	TELAIO POSTERIORE	CHASSIS ARRIERE	HINTERER RAHMEN	REAR MAIN FRAME	205		
43	41099900	1	TELAIO POSTERIORE	CHASSIS ARRIERE	HINTERER RAHMEN	REAR MAIN FRAME	220		
43	41100000	1	TELAIO POSTERIORE	CHASSIS ARRIERE	HINTERER RAHMEN	REAR MAIN FRAME	255		
44	42058700	1	RULLO PACKER	ROULEAU PACKER	PACKERWALZE	PACKER ROLLER	205		
44	42058800	1	RULLO PACKER	ROULEAU PACKER	PACKERWALZE	PACKER ROLLER	220		
44	42058900	1	RULLO PACKER	ROULEAU PACKER	PACKERWALZE	PACKER ROLLER	255		
45	30137201	2	BRACCIO	BRAS	ARM	ARM	180-205-255		
45	30137402	2	BRACCIO	BRAS	ARM	ARM	220		
46	40187100	1	BRACCIO SX	BRAS (G)	ARM (LINKS)	ARM (LH)			
46	40187200	1	BRACCIO DX	BRAS (D)	ARM (RECHTS)	ARM (RH)			
47	60031500	4	VITE	VIS	SCHRAUBE	SCREW	TE 14x70 UNI 5737		
48	67009800	2	SUPPORTO	SUPPORT	TRAEGER	SUPPORT	UCF 207		
49	30123600	2	STAFFA	BRIDE	BUEGEL	BRACKET			
50	60018000	2	VITE	VIS	SCHRAUBE	SCREW	TE 16x1,5x45 UNI 5738		
51	60024100	2	VITE	VIS	SCHRAUBE	SCREW	TE 16x1,5x55 UNI 5738		
52	40187300	2	VITE	VIS	SCHRAUBE	SCREW			
53	62001500	2	DADO	ECROU	MUTTER	NUT	M 16x1,5 UNI 5589		
54	62003300	2	DADO	ECROU	MUTTER	NUT	M 16x1,5 UNI 5588		
55	62003300	2	DADO	ECROU	MUTTER	NUT	M 16x1,5 UNI 5588		
56	30145600		RASCHIETTO	GRATTOIR	ABSTREIFER	CLEANER			
57	45076100	1	RASTRELLIERA PACKER	RATELIER DU ROULEAU	ABSTREIFERGESTELL	ROLLER CLEANER RACK	200		
57	45076200	1	RASTRELLIERA PACKER	RATELIER DU ROULEAU	ABSTREIFERGESTELL	ROLLER CLEANER RACK	220		
57	45076300	1	RASTRELLIERA PACKER	RATELIER DU ROULEAU	ABSTREIFERGESTELL	ROLLER CLEANER RACK	255		

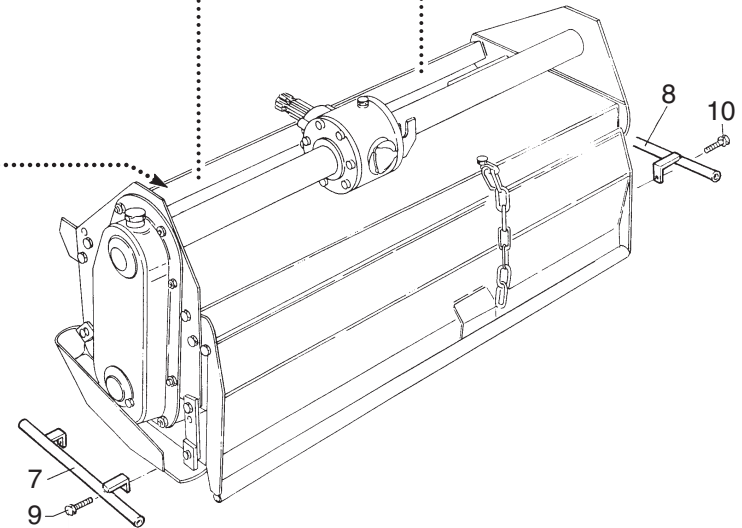
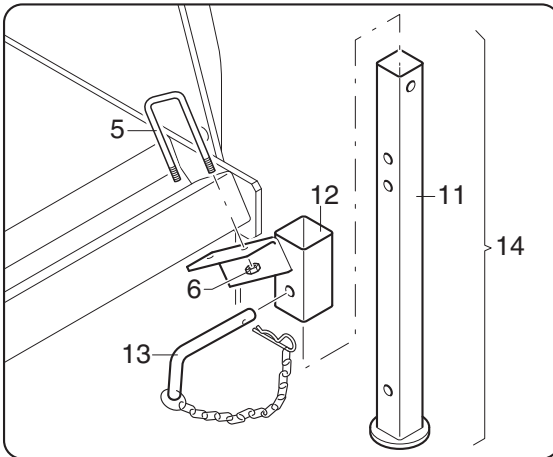


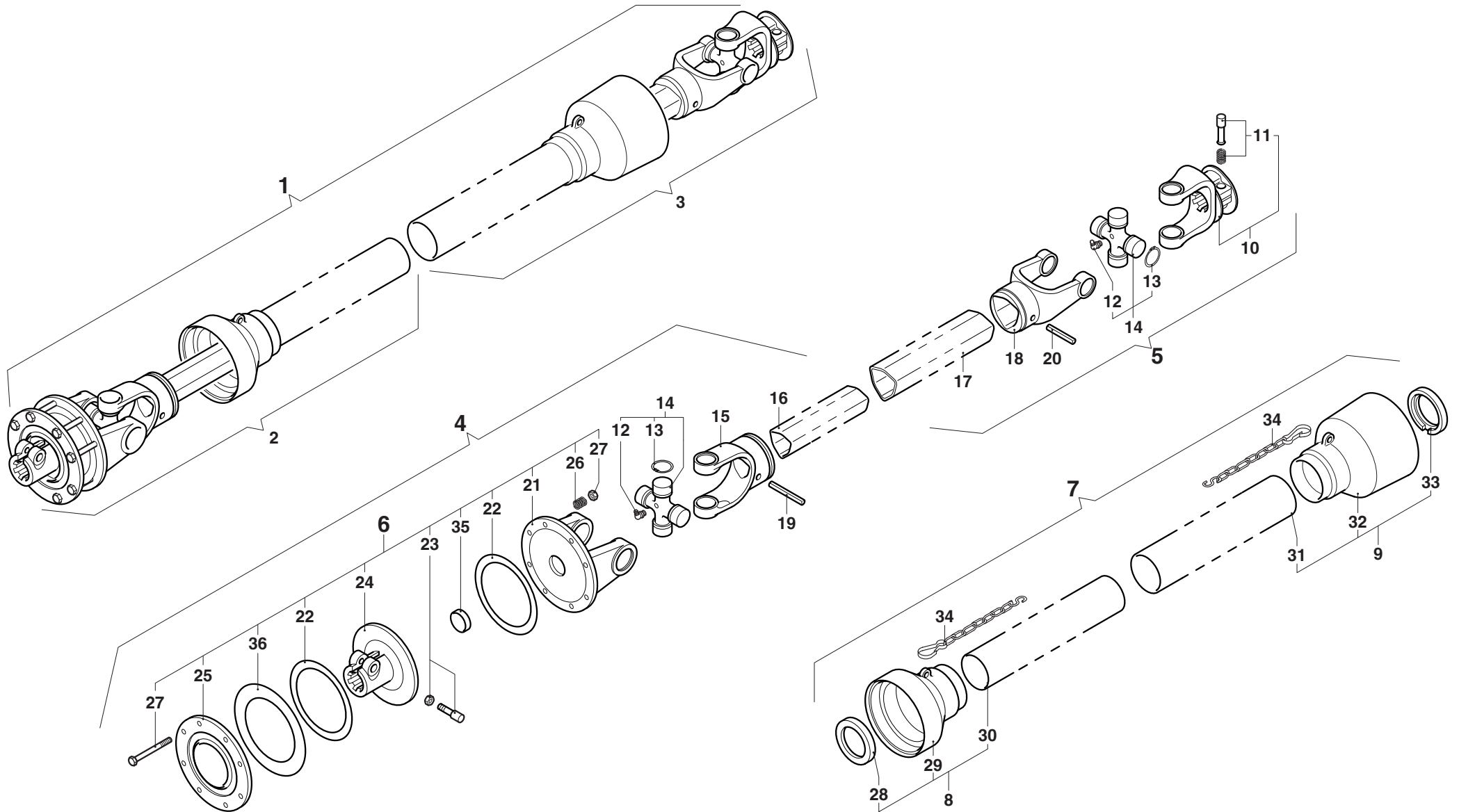
solo per - seulement pour - nur für - only for
145-155-180





solo per - seulement pour - nur für - only for
205-220-255

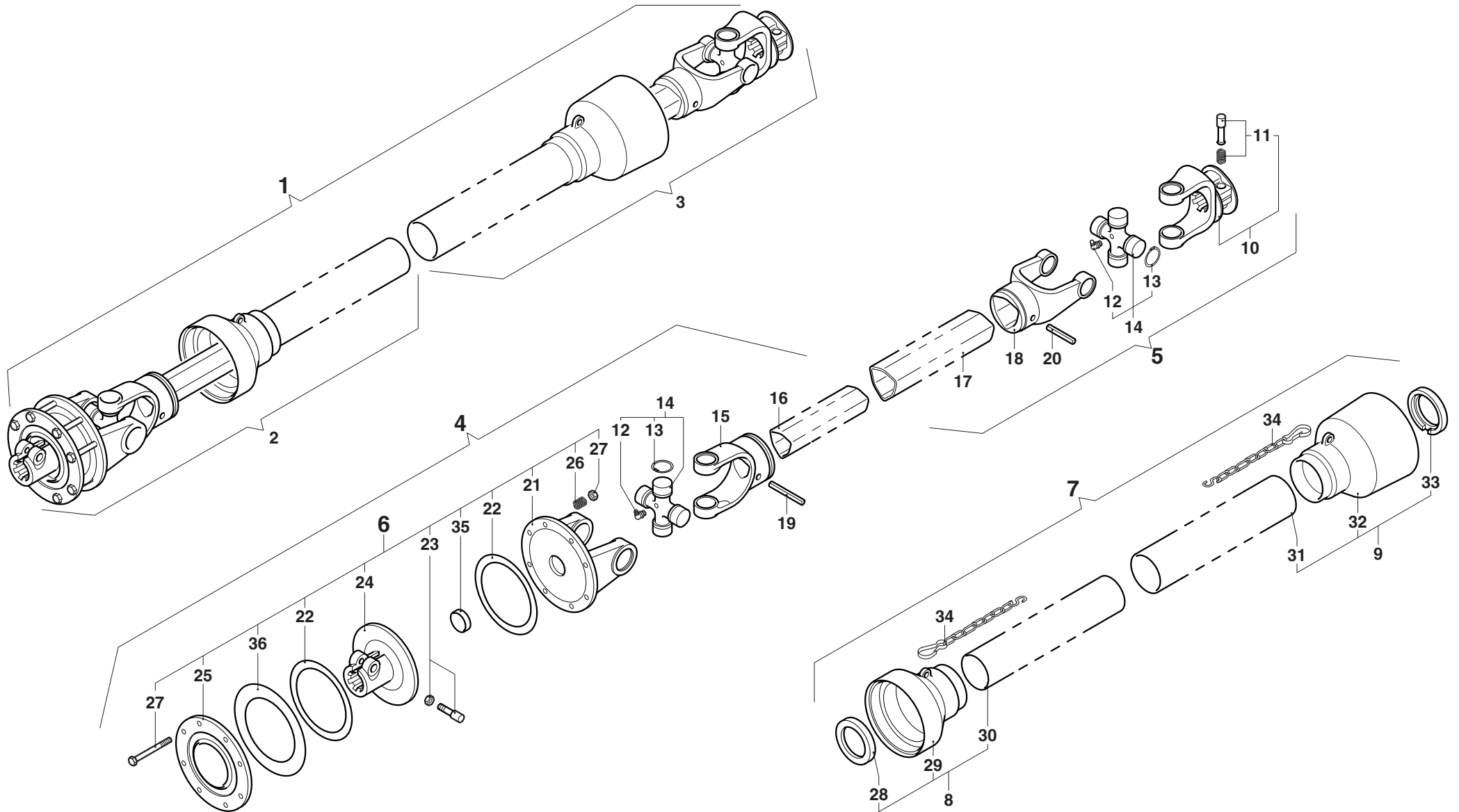




MURATORI MZ11CTI (145-255)

TAV. 6.0

POS.	N° CODICE	Q.	DESCRIZIONE	DESIGNATION	BENENNUNG	DESCRIPTION	DESIGNAZIONE	Da matr. De nr. serie Vom Seriennr. From serial nr.	Fino matr. Jusqu'au nr. serie Bis Seriennr. Up to serial nr.
1	AB709FF2DO	1	ALBERO CARDANICO COMPLETO	ARBRE A JOINTS DE CARDAN	KARDANWELLE	PTO SHAFT			
2	B7090B1255	1	SEMIALBERO INTERNO	DEMI-ARBRE INTERIEUR	INNENHALBWELLE	INTERNAL HALF SHAFT			
3	B7090B2	1	SEMIALBERO ESTERNO	DEMI-ARBRE EXTERIEUR	AUSSENHALBWELLE	EXTERNAL HALF SHAFT			
4	B709001255	1	SEMIALBERO INTERNO	DEMI-ARBRE INTERIEUR	INNENHALBWELLE	INTERNAL HALF SHAFT			
5	B70709002	1	SEMIALBERO ESTERNO	DEMI-ARBRE EXTERIEUR	AUSSENHALBWELLE	EXTERNAL HALF SHAFT			
6	086207	1	FRIZIONE	EMBRAYAGE	KUPPLUNG	CLUTCH			
7	083B07090C	1	PROTEZIONE	PROTECTION	SCHUTZ	GUARD			
8	083B070901C	1	PROTEZIONE INTERNA	PROTECTION INTERIEURE	INNENSCHUTZ	INTERNAL GUARD			
9	083B070902	1	PROTEZIONE ESTERNA	PROTECTION EXTERIEURE	AUSSENSCHUTZ	EXTERNAL GUARD			
10	0800703	1	FORCELLA	FOURCHE	GABEL	YOKE			
11	0986014047	1	PULSANTE	BOUTON	DRUCKKNOPF	PUSH BOTTON			
12	09840081002	2	INGRASSATORE	GRAISSEUR	SCHMIERNIPPEL	GREASE FITTING			
13	09802035	8	ANELLO ELASTICO	ARRETOIR	SPANNRING	SNAP-RING			
14	08207	2	CROCIERA	CROISILLON	KREUZSTUECK	SPIDER			
15	08007011	1	FORCELLA	FOURCHE	GABEL	YOKE			
16	09881455100	1	TUBO INTERNO	TUBE INTERIEUR	INNENROHR	INTERNAL TUBE			
17	09881544100	1	TUBO ESTERNO	TUBE EXTERIEUR	AUSSENROHR	EXTERNAL TUBE			
18	08007021	1	FORCELLA	FOURCHE	GABEL	YOKE			
19	098701070	1	SPINA ELASTICA	GOUPILLE ELASTIQUE	SPANNSTIFT	ELASTIC PIN			
20	098701080	1	SPINA ELASTICA	GOUPILLE ELASTIQUE	SPANNSTIFT	ELASTIC PIN			
21	086920107	1	FORCELLA	FOURCHE	GABEL	YOKE			
22	09833160	2	DISCO	DISQUE	SCHEIBE	DISC			
23	0408000029	1	PERNO	PIVOT	BOLZEN	PIN			
24	08692007P60	1	MOZZO	MOYEU	NABE	HUB			
25	0869112	1	DISCO	DISQUE	SCHEIBE	DISC			





MURATORI S.p.A.

Via Pavarello, 21 - 41051 Castelnuovo Rangone (MO) Italy - Tel. 059.5330611 Fax 059.537259

www.muratoriequip.it *info@muratoriequip.it*

Capitale sociale Euro 480.000 interamente versato

Registro Imprese di Modena

Codice fiscale e numero d'iscrizione: 00708860366